

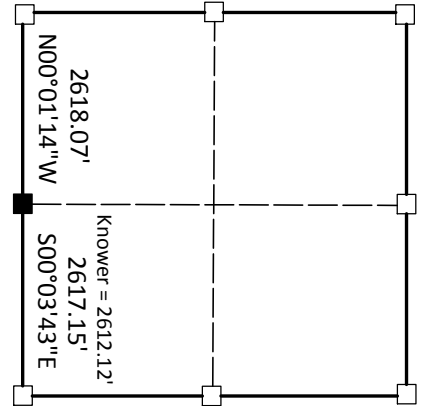
U.S. PUBLIC LAND SURVEY MONUMENT RECORD

(a) Corner Location
 Township 13 North
 Range 2 West
 Town of Stark
 Vernon County

I, Richard Marks, certify that the corner location on this record was determined by me and that this U.S. public land survey monument record is correct and complete to the best of my knowledge and belief.
 Dated this 24th day of October, 2013



Richard Marks R.L.S. # S-1473



■ = corner location

Section 14



History of corner establishment:

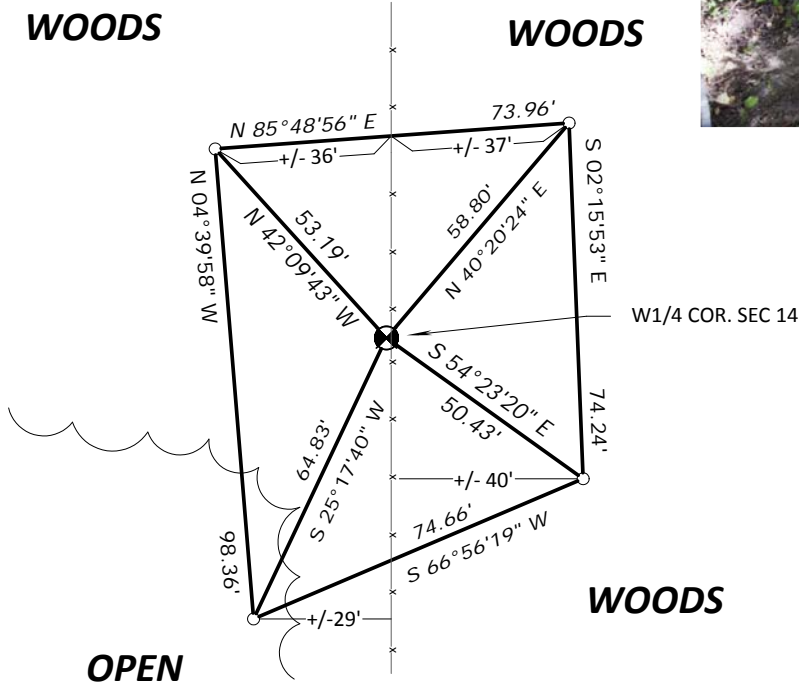
Original survey was done by Alfred L. Brown in January, 1846. On May 10, 1882 Kowner was at this corner. On September 27, 1983 Matt Janiak set a 1" x 24" iron pipe at a prorated location.

Description of corner evidence found:

I found the 1" iron pipe set by Janiak and replaced it with a Lunde monument.

Description of corner and witness monuments, references and accessories used to perpetuate the original or re-established location of this corner.

Bearings are grid based on the Vernon County coordinate system designed by the Wisconsin Department of Transportation. NAD83 (2011)
 Witness corners are 3/4" x 24" solid round iron rods set.
 I set a Lunde monument at this corner.



I SET A WARNING SIGN
 0.5' WEST OF CORNER.

Control: COMBINATION OF GPS AND CONVENTIONAL FIELD CONTROL

Datum: NAD 83 (2011)		County coordinates		State plane coordinates	
Lat.	43°36'10.816873"	North	166199.67'	North	584805.29'
Long.	90°35'30.931070"	East	780704.37'	East	1811715.01'

VERNON COUNTY COORDINATE FORM

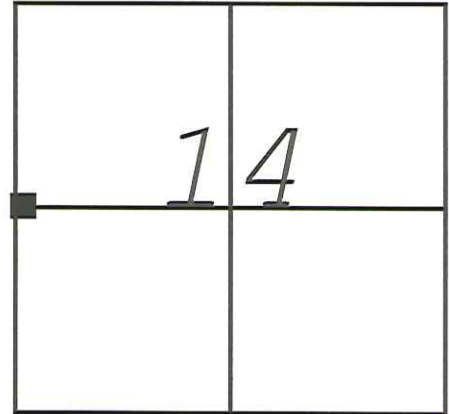
"As An Addendum To"

A CERTIFIED U.S. PUBLIC LAND SURVEY MONUMENT RECORD

INSTRUCTIONS: THIS RECORD FORM SHOULD BE USED WHEN COORDINATES ARE PROVIDED FOR A PUBLIC LAND SURVEY CORNER AND SHALL INCLUDE ALL OF THE FOLLOWING ELEMENTS (A-D)

(A) IDENTIFY THE CORNER BY REFERENCE TO THE U.S. PUBLIC LAND SURVEY SYSTEM IN DIAGRAM AT RIGHT

■ = CORNER MONUMENT



(B) COORDINATES:

GEOGRAPHIC (Degrees Minutes Decimal Seconds to 4 places):

LATITUDE: 43°36'10.8169"

LONGITUDE: 90°35'30.9310"

ELLIPSOID HT (m): 339.04

HORIZONTAL DATUM: NAD 83 (2011)

ORTHOMETRIC HT (U.S. ft): 1222.9'

VERTICAL DATUM: NAVD 88

T 13 N, R 2 EW

VERNON COUNTY (U.S. FEET)

Cord. Quality (+/-)

NORTHING (Y): 166199.67'

0.05'

EASTING (X): 780704.37'

0.05'

METHOD USED TO COMPUTE COORDINATES (check and complete as applicable):

RTK Observations Static Baselines OPUS Solution (attach copy of OPUS report)

Combination of conventional procedures with GPS observations to set temporary control

Was a Least Squares Adjustment Used to Compute Coordinate? Yes / **No**

For Non-OPUS Based Solutions, List the Control Stations Used for Coordinate Computations (a minimum of 2 different control stations or 2 different time combinations from the same control station are required):

Obs. #	Control Station Name	Station Coordinates (Lat/Long)	Date	Time
1	Rockton GPS	43°38'44.97186" 90°36'05.06654"	9-24-2013	10:30AM
2	Rockton GPS	43°38'44.97186" 90°36'05.06654"	10-22-2013	11:00AM

* Please List Additional Control Stations Used on Back of Form

When a direct observation of the corner is not possible, and a combination of different GPS and/or conventional procedures must be used to determine coordinate values, provide a brief description of your procedures on the back of form.

(C) REASON FOR COORDINATE SUBMITTAL (check one):

Being Filed With a New U.S. PLS Monument Record

To Correct the Coordinates Listed on a Previously Filed PLS Monument Record

To Provide Coordinates for a Previously Filed PLS Monument Record without Coordinates

To Provide Supplemental Coordinates for a Previously Filed PLS Monument Record

R.L.S. & DATE OF PLS MONUMENT RECORD: _____

(D) AGENT(S) PERFORMING GPS OBSERVATIONS & COORDINATE COMPUTATION

1) Richard Marks

2) Daniel Marks

I, Richard Marks

CERTIFY THAT THE COORDINATES PROVIDED ON THIS RECORD WERE DETERMINED BY ME OR UNDER MY DIRECTION AND CONTROL AND THAT THIS COORDINATE SUBMISSION FORM IS CORRECT AND COMPLETE TO THE BEST OF MY KNOWLEDGE AND BELIEF.

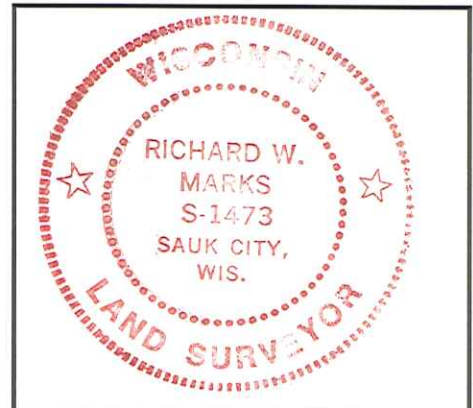


10-24-2013

SIGNATURE

DATE

Seal



* Please Provide Any Additional Notes/Information on Back of Form

Date of last revision: 12/1/2008

Approved by LIC: 12/1/2008

10:00 AM

DEC 5 1983

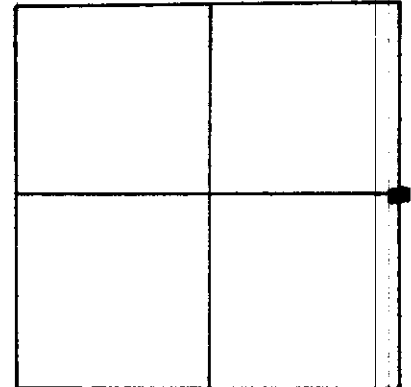
U. S. PUBLIC LAND SURVEY MONUMENT RECORD
Vernon County, Wisconsin.

Basis for monument location.

Researched records and could find no evidence of the corner being marked since the government survey. Investigation of the area showed no evidence at all as to where the corner might be located. After doing a T2 EDM traverse of the quarter section and the west line of the section I established the location of the corner at the proportionate distance from the adjoining corners on the occupied line.

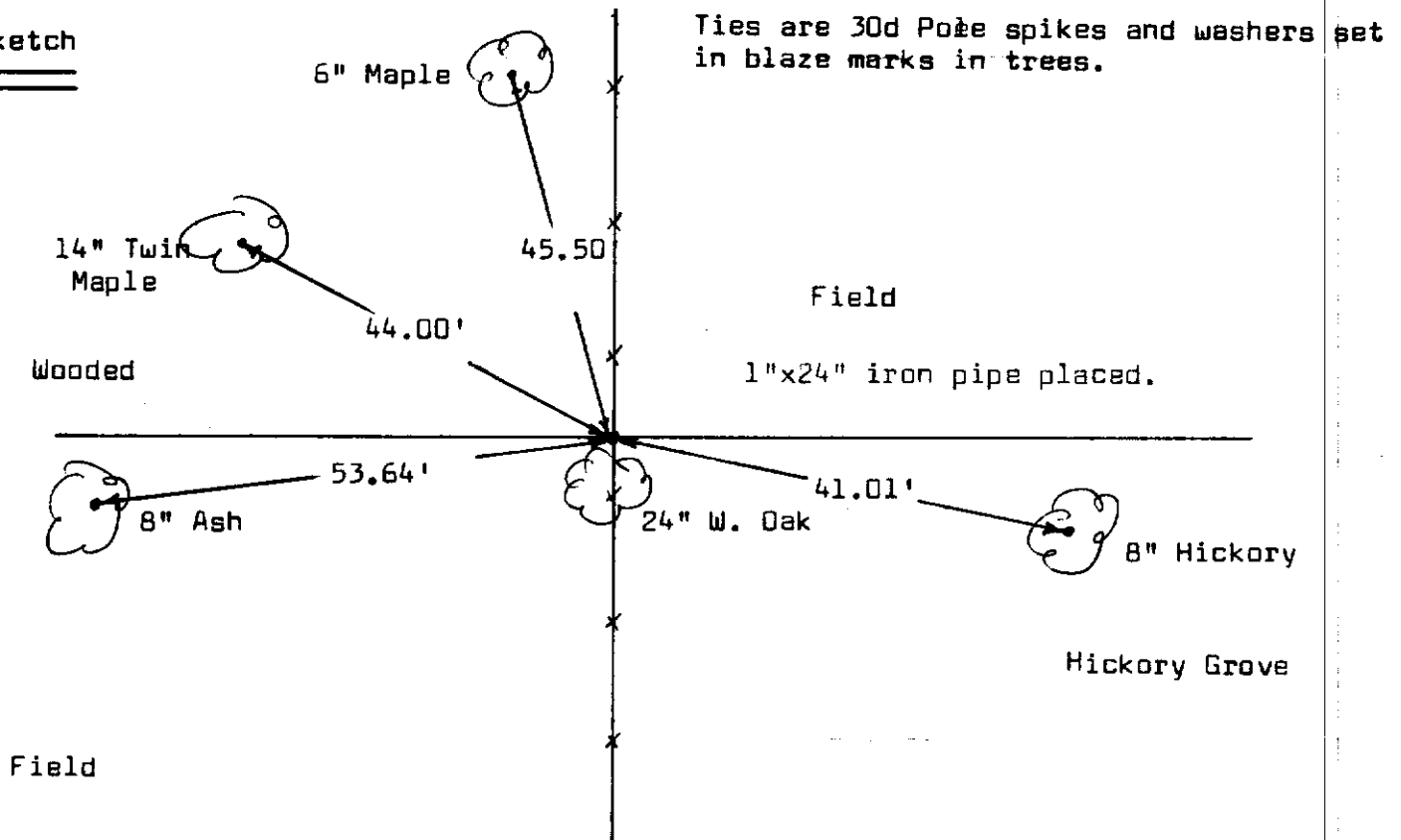
NORTH

Section 15, T3N, R2W



Corner Location
(Indicate by - ■ -)

Tie sketch



I, Matthew J. Janiak Certify that the corner location shown hereon this record was determined by me or under my direction and control and that this U. S. Public Land Survey Monument Record is correct and complete to the best of my knowledge and belief.

9/27/83
Date

Matthew J. Janiak
Registered Land Surveyor

