

VERNON COUNTY

CERTIFIED U.S. PUBLIC LAND SURVEY MONUMENT RECORD

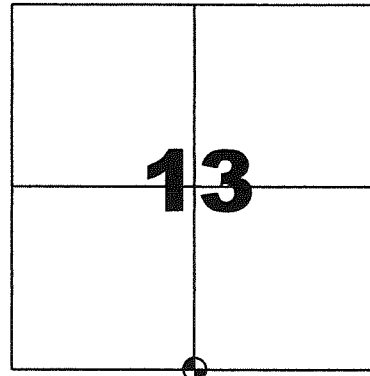
INSTRUCTIONS: THIS RECORD SHALL SHOW THE LOCATION OF THE CORNER AND SHALL INCLUDE ALL OF THE FOLLOWING ELEMENTS (A-1)

(A) IDENTIFY THE CORNER BY REFERENCE TO THE U.S. PUBLIC LAND SURVEY SYSTEM
SOUTH QUARTER CORNER SECTION 13, T13N, R2W

- ⊕ = CORNER MONUMENT RESTORED - 2" IRON PIPE FOUND, SET 2" IRON PIPE WITH BRASS CAP LUNDE MONUMENT. WITNESSES TO CORNER LOCATION
- 1) SEAN M. WALSH
 - 2)
 - 3)

VERNON COUNTY COORDINATES
 NORTHING: 163,555.102
 EASTING: 788,567.538

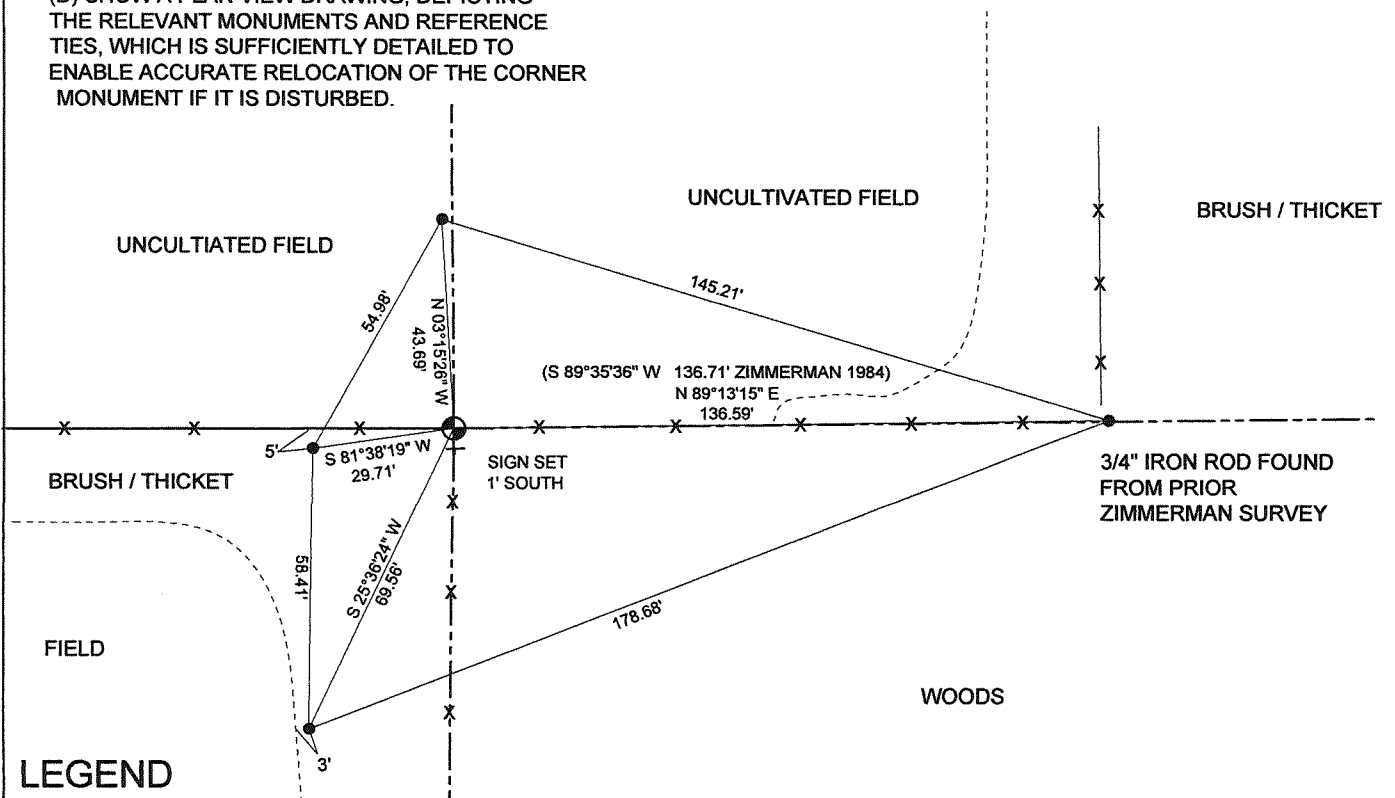
BASIS OF BEARINGS AND COORDINATES:
 WISCRS VERNON, NAD 83(2011)



SOUTH QUARTER CORNER
SECTION 13 , TOWN 13 NORTH, RANGE 2 WEST

(C) IN THE PLAN VIEW DRAWING BELOW, PROVIDE REFERENCE TO AT LEAST 4 WITNESS MONUMENTS OR, IF THE LOCATION IS WITHIN A MUNICIPALITY, TO AT LEAST 2 WITNESS MONUMENTS. (WITNESS MONUMENTS SHALL BE MADE OF CONCRETE, NATURAL STONE, IRON OR OTHER EQUALLY DURABLE MATERIAL) DESCRIBE WITNESS MONUMENTS

(D) SHOW A PLAN VIEW DRAWING, DEPICTING THE RELEVANT MONUMENTS AND REFERENCE TIES, WHICH IS SUFFICIENTLY DETAILED TO ENABLE ACCURATE RELOCATION OF THE CORNER MONUMENT IF IT IS DISTURBED.



LEGEND

- 3/4" Dia x 18" iron rebar set as tie unless noted otherwise
- ⊕ 2" iron pipe found, replaced with 2" iron pipe with brass cap Lunde monument
- ± Vernon County Survey Marker Sign on steel channel post

NOT TO SCALE

VERNON COUNTY
CERTIFIED U.S. PUBLIC LAND SURVEY MONUMENT RECORD

RECOVERY PROCEDURES:

(E) A DESCRIPTION OF ANY RECORD EVIDENCE, MONUMENT EVIDENCE, OCCUPATIONAL EVIDENCE, TESTIMONIAL EVIDENCE OR ANY OTHER MATERIAL EVIDENCE CONSIDERED BY THE SURVEYOR, AND WHETHER THE MONUMENT WAS FOUND OR PLACED;

CORNER HISTORY:

ORIGINAL GOV'T SURVEY, ALFRED BROWN, 1946

1870 I.F. THORP SUBDIVIDED PART OF SECTION 24, NO MONUMENTATION OR WITNESSES NOTED

1891 STERLING SUBDIVIDED SECTION 13, SHOWS DIMENSIONS BUT NO REFERENCE TO MONUMENT OR WITNESSES

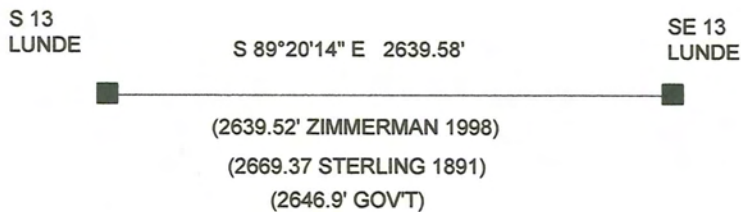
1984 ZIMMERMAN SET 2" IRON PIPE FOR SURVEY IN SECTION 13 AND FILED TIE SHEET FOR CORNER. ONLY ONE TIE REMAINS, A 3/4" IRON ROD SET AS A PROPERTY CORNER TO THE EAST SHOWN HERE.

I LOCATED A 2" IRON PIPE AS DESCRIBED BY ZIMMERMAN. PIPE FITS WELL WITH PREVIOUS REMAINING TIE AND WITH OCCUPATION. BASED ON PRIOR HISTORY AND WELL ESTABLISHED OCCUPATION, I ACCEPT THIS CORNER, MONUMENT AND PERPETUATE AS SHOWN HERE.

(F) WHETHER THE CORNER WAS RESTORED THROUGH ACCEPTANCE OF AN OBLITERATED EVIDENCE LOCATION OR A FOUND PERPETUATED LOCATION;

FOUND PERPETUATED LOCATION

(G) WHETHER THE CORNER WAS REESTABLISHED THROUGH LOST-CORNER PROPORTIONATE METHODS; IF SO, S HOW THE DIRECTIONS AND DISTANCES TO OTHER PUBLIC LAND SURVEY CORNERS WHICH WERE USED AS EVIDENCE OR USED FOR PROPORTIONING IN DETERMINING THE CORNER LOCATION;



SURVEYOR'S CERTIFICATE: CHAPTER 7.08 (3) (I)

THE UNDERSIGNED HEREBY CERTIFIES THAT THE U.S. PUBLIC LAND SURVEY MONUMENT RECORD SHOWN WAS DETERMINED BY THEM OR UNDER THEIR DIRECTION AND IS CORRECT AND COMPLETE TO THE BEST OF THEIR KNOWLEDGE AND BELIEF.



Sean M. Walsh

9/12/15

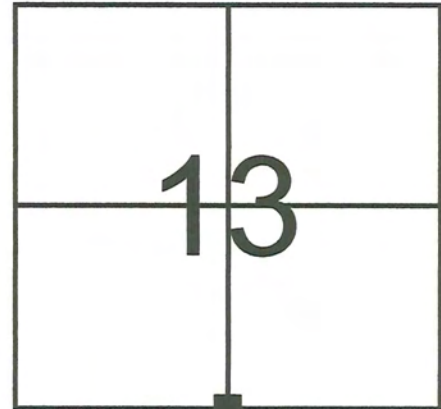
DATE CERTIFIED

VERNON COUNTY COORDINATE FORM
Addendum To
U.S. PUBLIC LAND SURVEY MONUMENT RECORD

INSTRUCTIONS: THIS RECORD FORM SHOULD BE USED WHEN COORDINATES ARE PROVIDED FOR A PUBLIC LAND SURVEY CORNER AND SHALL INCLUDE ALL OF THE FOLLOWING ELEMENTS (A-D) UNLESS INDICATED AS OPTIONAL

(A) IDENTIFY THE CORNER BY REFERENCE TO THE U.S. PUBLIC LAND SURVEY SYSTEM IN DIAGRAM AT RIGHT

■ = CORNER MONUMENT



T 13 N, R 2 E/W

(B) COORDINATES:

VERNON COUNTY (U.S. FEET)

NORTHING (Y): 163,555.102
EASTING (X): 788,567.538

GEOGRAPHIC (DMS to 4 decimal places):

LATITUDE: 43°35'44.5073" (N)
LONGITUDE: 90°33'44.1672" (W)

HORIZONTAL DATUM: NAD 83 (2011)

ORTHOMETRIC HT (U.S. ft): _____ (optional)

VERTICAL DATUM: _____

METHOD USED TO COMPUTE COORDINATES (check as applicable):

- RTK Observations from WISCORS Control
 RTK Observations from Passive WI. Ht. Modernization Control
 Static Baselines
 OPUS-RS Solution OPUS-S Solution
 Combination of conventional procedures with GPS observations to set temporary control
 Single Angle Measurement Closed Traverse Loop

BASE CONTROL USED FOR COORDINATE COMPUTATION:

Station Name	Station Coordinates	Date/Time
STARK S GPS PID DH5161	N: 148,109.956 E: 772,907.4853	7/21/2015 10:05 AM & 8/21/2015 9:32 AM
MA BRENNAN GPS PID DH5160	N: 148,602.507 E: 748,776.104	SAME
STARK E GPS PID DH5147	N: 159,415.294 E: 789,358.871	SAME
STARK W GPS PID DH5162	N: 169,096.441 E: 760,343.022	SAME

* Please List Any Additional Control Stations Used/Notes/Information on Back of Form

(C) REASON FOR COORDINATE SUBMITTAL (check one):

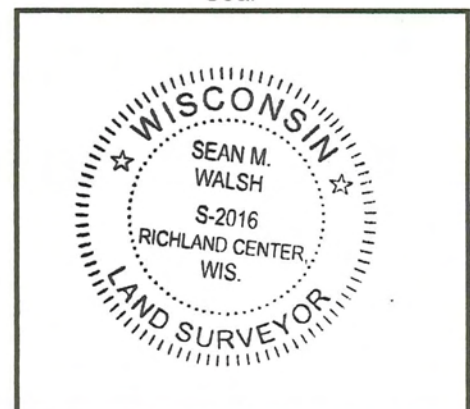
- Being Filed With a New U.S. PLS Monument Record
 -Or-
 To Correct the Coordinates Listed on a Previously Filed PLS Monument Record
 To Provide Coordinates for a Previously Filed PLS Monument Record without Coordinates
 To Provide Supplemental Coordinates for Previously Filed U.S. Public Land Survey Monument Record
 R.L.S. & DATE OF PLS MONUMENT RECORD: _____

(D) AGENT(S) PERFORMING GPS OBSERVATIONS & COORDINATE COMPUTATION

- 1) SEAN M. WALSH, PLS
 2) _____

I, SEAN M. WALSH, PLS
 CERTIFY THAT THE COORDINATES PROVIDED ON THIS RECORD WERE DETERMINED BY ME OR UNDER MY DIRECTION AND CONTROL AND THAT THIS COORDINATE SUBMISSION FORM IS CORRECT AND COMPLETE TO THE BEST OF MY KNOWLEDGE AND BELIEF.

Seal



SIGNATURE

DATE

Sean M. Walsh 9/17/15

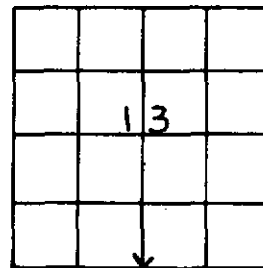
VERNON COUNTY Government Land Corner Certificate

TYPE OF MONUMENT: 2" x 30" IRON PIPE 3.65 LBS / FT. ELEVATION - M.S.L. DATUM: _____
 STATE PLANE COORDINATES: N _____ THETA ANGLE: _____
 Wis. South Zone E _____ FIELD BOOK: _____ PAGE _____

Basis for Monument Location

(Use reverse side if necessary.
 Show info such as: History of corner, with reference to Vol. and page,
 dates, surveyor; exact description of monument found; if location
 computed, by taped or EDM traverse; landowner remarks, witnesses,
 etc.)

RESEARCHED VERNON COUNTY SURVEY RECORDS
 BUT COULD FIND NO PERTINENT INFO ON THIS CORNER.
 ACCEPTED WELL OCCUPIED FENCE FOR CORNER.
 FITS EDM-TZ TRAVERSE WELL.

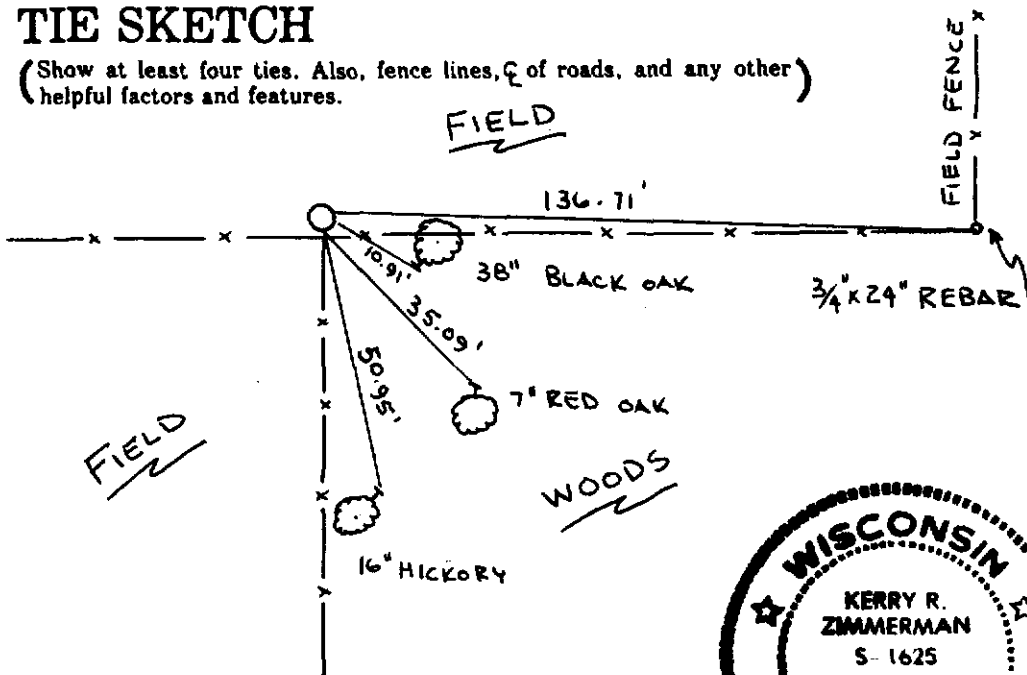


LOCATION
 (Indicated by 'X')

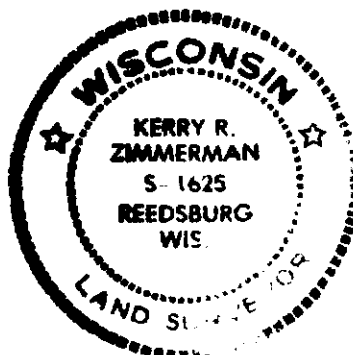
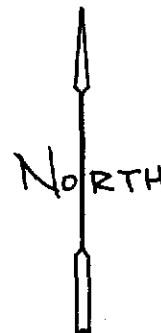
CITY, VILLAGE or TOWN STARK
 SECTION 13
 TOWN 13N
 RANGE 2W
 DRAFTED BY ZIMMERMAN
 FIELD CREW B&Z

TIE SKETCH

(Show at least four ties. Also, fence lines, & of roads, and any other helpful factors and features.)



NOTE:
 ALL TREES BLAZED
 TIES TO 5/16" x 7" SPIKES



CORNER MAINTENANCE INFO		SEAL:

SEAL:
 CERTIFIED CORRECT:

Kerry R. Zimmerman
 Registered Land Surveyor
 DATE: 6/28/84

23

For Co. Surveyor Filing Use → CORNER NO. _____