

# VERNON COUNTY

## CERTIFIED U.S. PUBLIC LAND SURVEY MONUMENT RECORD

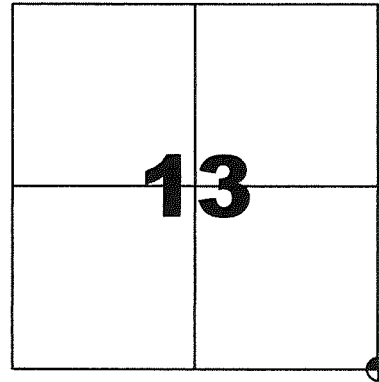
INSTRUCTIONS: THIS RECORD SHALL SHOW THE LOCATION OF THE CORNER AND SHALL INCLUDE ALL OF THE FOLLOWING ELEMENTS (A-1)

(A) IDENTIFY THE CORNER BY REFERENCE TO THE U.S. PUBLIC LAND SURVEY SYSTEM  
**SOUTHEAST CORNER SECTION 13, T13N, R2W**

- ⊕ = CORNER MONUMENT RESTORED - FOUND 2" IRON PIPE WITH BRASS CAP LUNDE MONUMENT WITNESSES TO CORNER LOCATION
- 1) SEAN M. WALSH
  - 2)
  - 3)

VERNON COUNTY COORDINATES  
 NORTHING: 163,585.634  
 EASTING: 791,206.938

BASIS OF BEARINGS AND COORDINATES:  
 WISCRS VERNON, NAD 83(2011)



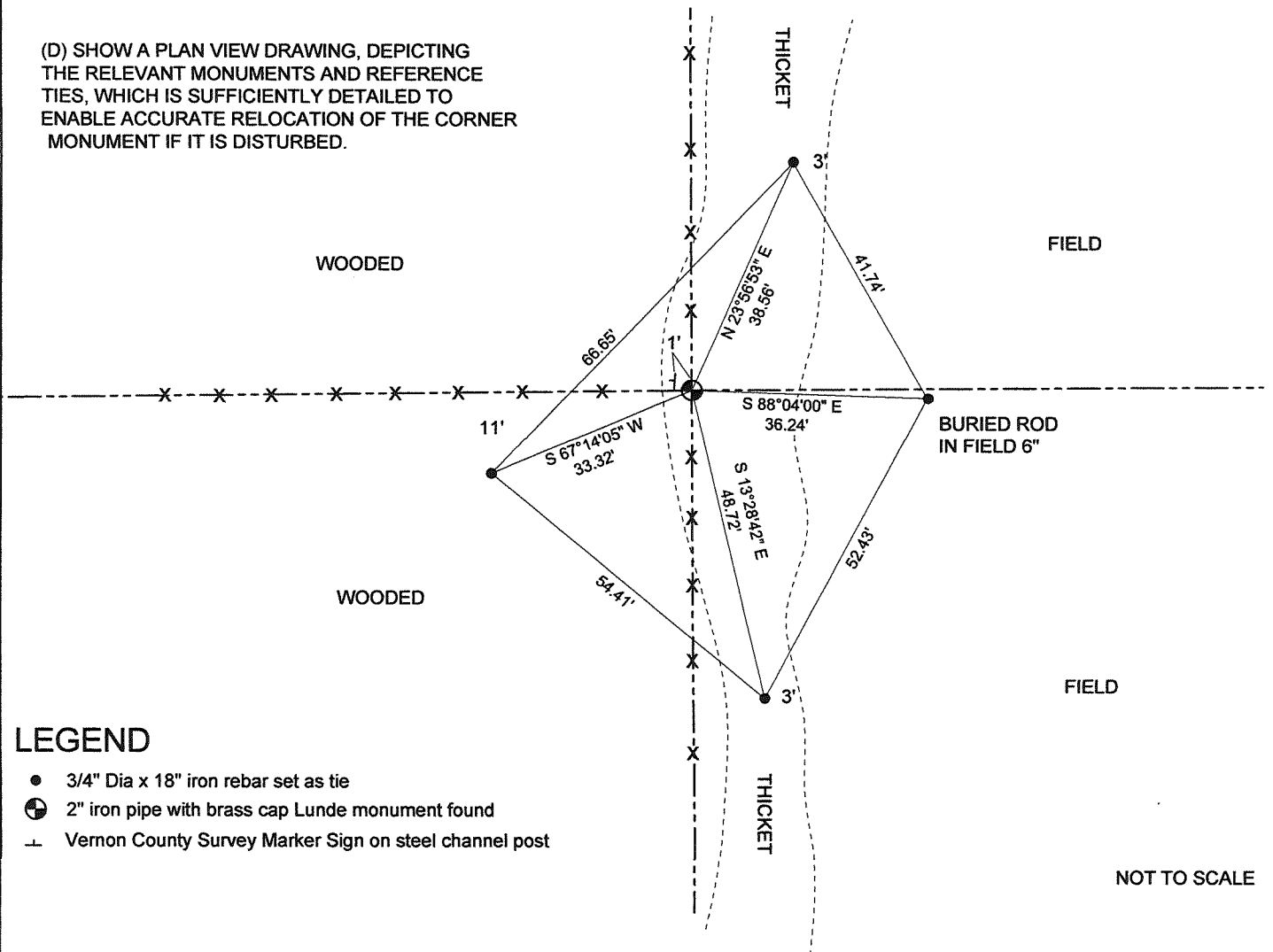
**SOUTHEAST CORNER**

**SECTION 13 , TOWN 13 NORTH, RANGE 2 WEST**



(C) IN THE PLAN VIEW DRAWING BELOW, PROVIDE REFERENCE TO AT LEAST 4 WITNESS MONUMENTS OR, IF THE LOCATION IS WITHIN A MUNICIPALITY, TO AT LEAST 2 WITNESS MONUMENTS. (WITNESS MONUMENTS SHALL BE MADE OF CONCRETE, NATURAL STONE, IRON OR OTHER EQUALLY DURABLE MATERIAL) DESCRIBE WITNESS MONUMENTS

(D) SHOW A PLAN VIEW DRAWING, DEPICTING THE RELEVANT MONUMENTS AND REFERENCE TIES, WHICH IS SUFFICIENTLY DETAILED TO ENABLE ACCURATE RELOCATION OF THE CORNER MONUMENT IF IT IS DISTURBED.



**LEGEND**

- 3/4" Dia x 18" iron rebar set as tie
- ⊕ 2" iron pipe with brass cap Lunde monument found
- + Vernon County Survey Marker Sign on steel channel post

NOT TO SCALE

**VERNON COUNTY**  
**CERTIFIED U.S. PUBLIC LAND SURVEY MONUMENT RECORD**

**RECOVERY PROCEDURES:**

(E) A DESCRIPTION OF ANY RECORD EVIDENCE, MONUMENT EVIDENCE, OCCUPATIONAL EVIDENCE, TESTIMONIAL EVIDENCE OR ANY OTHER MATERIAL EVIDENCE CONSIDERED BY THE SURVEYOR, AND WHETHER THE MONUMENT WAS FOUND OR PLACED;

**CORNER HISTORY:**

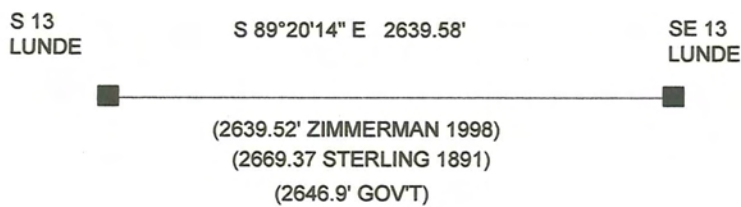
ORIGINAL GOV'T SURVEY, J.E. WHITCHER, 1845  
1876 E WYMAN USED CORNER FOR SURVEY IN SECTION 24, ONLY NOTED FORTY CORNERS  
1886 KNOWER SET STAKE AND NOTED ONE TREE FOR SURVEY IN SECTION 18, 13-1W, NO EVIDENCE REMAINING  
1887 KNOWER SUBDIVIDED SECTION 18, NO MENTION OF THIS CORNER  
1891 STERLING USED CORNER FOR SURVEY IN SECTION 13. NO MONUMENTATION OR WITNESSES NOTED  
1984 ZIMMERMAN SET 2" X 30" IRON PIPE FOR SURVEY IN SECTION 13 AND FILED TIE SHEET  
1996 CORNELL FOUND AND ACCEPTED 2" IRON PIPE ON SURVEY IN SECTION 18, 13-1W

I LOCATED A 2" IRON PIPE WITH BRASS CAP LUNDE MONUMENT AT THIS LOCATION WITH GOV'T SIGN IN PLACE. BASED ON PRIOR HISTORY AND NO CONFLICTING EVIDENCE FROM PRIOR SURVEYS, I ACCEPT THIS LOCATION AS THE BEST AVAILABLE EVIDENCE AND PERPETUATE AS SHOWN.

(F) WHETHER THE CORNER WAS RESTORED THROUGH ACCEPTANCE OF AN OBLITERATED EVIDENCE LOCATION OR A FOUND PERPETUATED LOCATION;

FOUND PERPETUATED LOCATION

(G) WHETHER THE CORNER WAS REESTABLISHED THROUGH LOST-CORNER PROPORTIONATE METHODS; IF SO, S HOW THE DIRECTIONS AND DISTANCES TO OTHER PUBLIC LAND SURVEY CORNERS WHICH WERE USED AS EVIDENCE OR USED FOR PROPORTIONING IN DETERMINING THE CORNER LOCATION;



**SURVEYOR'S CERTIFICATE:** CHAPTER 7.08 (3) (I)

THE UNDERSIGNED HEREBY CERTIFIES THAT THE U.S. PUBLIC LAND SURVEY MONUMENT RECORD SHOWN WAS DETERMINED BY THEM OR UNDER THEIR DIRECTION AND IS CORRECT AND COMPLETE TO THE BEST OF THEIR KNOWLEDGE AND BELIEF.



9/17/15

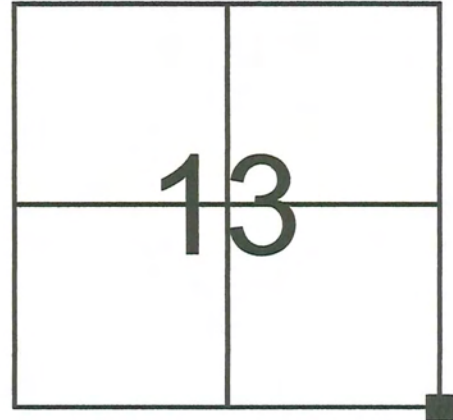
DATE CERTIFIED

**VERNON COUNTY COORDINATE FORM**  
Addendum To  
**U.S. PUBLIC LAND SURVEY MONUMENT RECORD**

INSTRUCTIONS: THIS RECORD FORM SHOULD BE USED WHEN COORDINATES ARE PROVIDED FOR A PUBLIC LAND SURVEY CORNER AND SHALL INCLUDE ALL OF THE FOLLOWING ELEMENTS (A-D) UNLESS INDICATED AS OPTIONAL

(A) IDENTIFY THE CORNER BY REFERENCE TO THE U.S. PUBLIC LAND SURVEY SYSTEM IN DIAGRAM AT RIGHT

■ = CORNER MONUMENT



T 13 N, R 2 E/W

(B) COORDINATES:

VERNON COUNTY (U.S. FEET)

NORTHING (Y): 163,585.634  
EASTING (X): 791,206.938

GEOGRAPHIC (DMS to 4 decimal places):

LATITUDE: 43°35'44.7379" (N)  
LONGITUDE: 90°33'08.3013" (W)

HORIZONTAL DATUM: NAD 83 (2011)

ORTHOMETRIC HT (U.S. ft): \_\_\_\_\_ (optional)

VERTICAL DATUM: \_\_\_\_\_

METHOD USED TO COMPUTE COORDINATES (check as applicable):

- RTK Observations from WISCORS Control  
 RTK Observations from Passive WI. Ht. Modernization Control  
 Static Baselines  
 OPUS-RS Solution  OPUS-S Solution  
 Combination of conventional procedures with GPS observations to set temporary control  
 Single Angle Measurement  Closed Traverse Loop

BASE CONTROL USED FOR COORDINATE COMPUTATION:

| Station Name              | Station Coordinates            | Date/Time                              |
|---------------------------|--------------------------------|--|
| STARK S GPS PID DH5161    | N: 148,109.956 E: 772,907.4853 | 7/21/2015 8:56 AM & 8/21/2015 10:10 AM |
| MA BRENNAN GPS PID DH5160 | N: 148,602.507 E: 748,776.104  | SAME                                   |
| STARK E GPS PID DH5147    | N: 159,415.294 E: 789,358.871  | SAME                                   |
| STARK W GPS PID DH5162    | N: 169,096.441 E: 760,343.022  | SAME                                   |

\* Please List Any Additional Control Stations Used/Notes/Information on Back of Form

(C) REASON FOR COORDINATE SUBMITTAL (check one):

- Being Filed With a New U.S. PLS Monument Record  
 -Or-  
 To Correct the Coordinates Listed on a Previously Filed PLS Monument Record  
 To Provide Coordinates for a Previously Filed PLS Monument Record without Coordinates  
 To Provide Supplemental Coordinates for Previously Filed U.S. Public Land Survey Monument Record  
 R.L.S. & DATE OF PLS MONUMENT RECORD: \_\_\_\_\_

(D) AGENT(S) PERFORMING GPS OBSERVATIONS & COORDINATE COMPUTATION

- 1) SEAN M. WALSH, PLS  
 2) \_\_\_\_\_

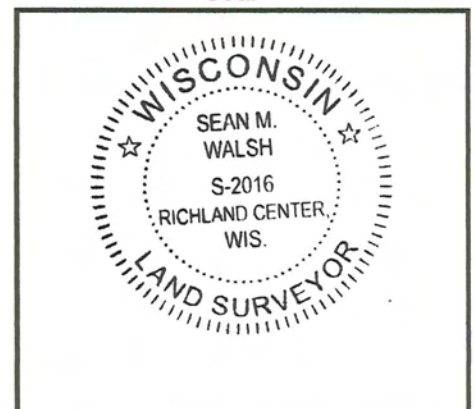
I, SEAN M. WALSH, PLS

CERTIFY THAT THE COORDINATES PROVIDED ON THIS RECORD WERE DETERMINED BY ME OR UNDER MY DIRECTION AND CONTROL AND THAT THIS COORDINATE SUBMISSION FORM IS CORRECT AND COMPLETE TO THE BEST OF MY KNOWLEDGE AND BELIEF.

SIGNATURE

DATE

Seal



*Sean Walsh* 9/07/15

# VERNON COUNTY

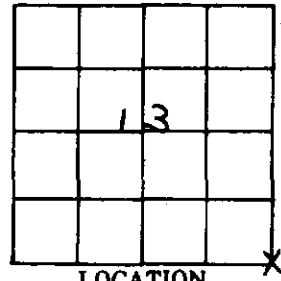
## Government Land Corner Certificate

TYPE OF MONUMENT: 2"x30" IRON PIPE 3.65 LBS/FT. ELEVATION - M.S.L. DATUM: \_\_\_\_\_  
 STATE PLANE COORDINATES: N \_\_\_\_\_ THETA ANGLE: \_\_\_\_\_  
 Wis. South Zone E \_\_\_\_\_ FIELD BOOK: \_\_\_\_\_ PAGE \_\_\_\_\_

### Basis for Monument Location

(Use reverse side if necessary.  
 Show info such as: History of corner, with reference to Vol. and page, dates, surveyor; exact description of monument found; if location computed, by taped or EDM traverse; landowner remarks, witnesses, etc.)

RESEARCHED VERNON COUNTY SURVEY RECORDS BUT FOUND NO PERTINENT INFO ON THIS CORNER. NO EVIDENCE OF ORIGINAL BT'S. ACCEPTED FENCE CORNER AS BEST EVIDENCE OF CORNER'S POSITION. FITS EDM-TZ TRAVERSE WELL.



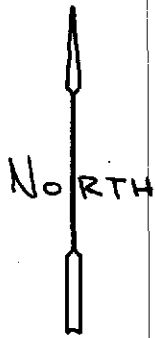
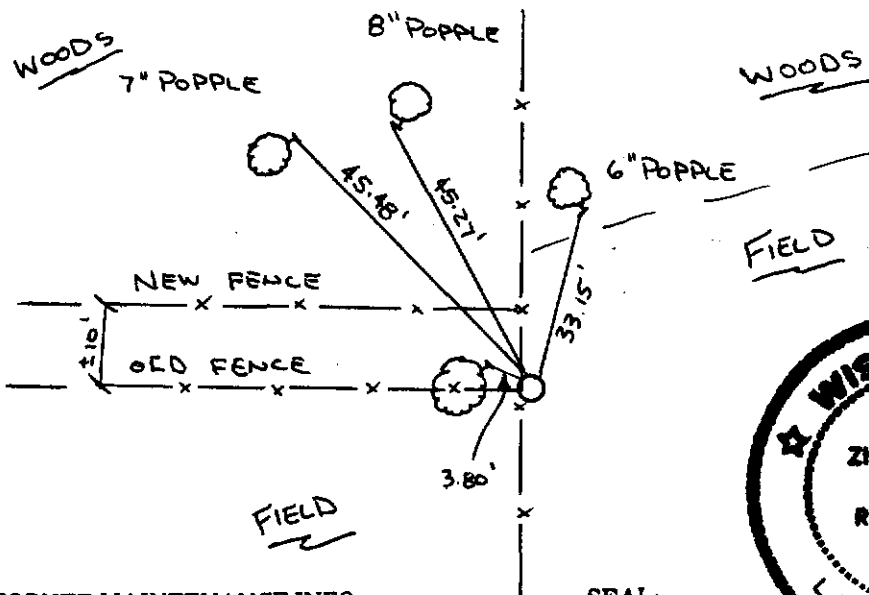
LOCATION  
(Indicated by 'X')

CITY, VILLAGE or TOWN STARK  
 SECTION 13  
 TOWN 13N  
 RANGE 2W  
 DRAFTED BY ZIMMERMAN  
 FIELD CREW B & Z

### TIE SKETCH

(Show at least four ties. Also, fence lines,  $\phi$  of roads, and any other helpful factors and features.)

NOTE:  
 ALL TREES BLAZED  
 TIES TO 5/16" X 7" SPIKES



CORNER MAINTENANCE INFO

|  |  |  |
|--|--|--|
|  |  |  |
|  |  |  |
|  |  |  |
|  |  |  |
|  |  |  |
|  |  |  |
|  |  |  |
|  |  |  |

SEAL:

SEAL:  
 CERTIFIED CORRECT:  
Kerry R. Zimmerman  
 Registered Land Surveyor  
 DATE: 6/28/84  
 CORNER NO. \_\_\_\_\_

24