

VERNON COUNTY CERTIFIED U.S. PUBLIC LAND SURVEY MONUMENT RECORD

INSTRUCTIONS: THIS RECORD SHALL SHOW THE LOCATION OF THE CORNER AND SHALL INCLUDE ALL OF THE FOLLOWING ELEMENTS (A-I)

(A) IDENTIFY THE CORNER BY REFERENCE TO THE U.S. PUBLIC LAND SURVEY SYSTEM

■ = CORNER MONUMENT RESTORED

WITNESSES TO CORNER LOCATION:

- 1) Robert M. Lampman
- 2) Jessica A. Zamor

GEOGRAPHIC COORDINATES - WGS84/GRS80 - NAD83(1991)

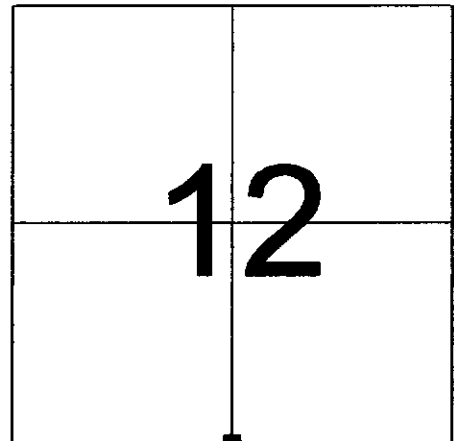
Lat: 43°36'36.23358" N

Lon: 90°33'44.16927" W

VERNON COUNTY COORDINATES - NAD83(1991) - SURVEY FEET

NORTHING: 168792.810

EASTING: 788553.456



SECTION 12
TOWN 13 NORTH, RANGE 2 WEST

(B) DESCRIBE ANY RECORD EVIDENCE, MONUMENT EVIDENCE, OCCUPATIONAL EVIDENCE, TESTIMONIAL EVIDENCE OR ANY OTHER MATERIAL EVIDENCE YOU CONSIDERED, AND WHETHER THE MONUMENT WAS FOUND OR PLACED.

Corner location was reestablished from evidence of occupation. Direction of occupation along the East line of the SW ¼ Section 12 was intersected with direction of occupation along the South line of the SE ¼ of Section 12.

The resulting corner location as shown hereon was verified through information included on a 1884 survey of Section 12 by W.H.Knower and a 1891 survey of Section 13 by C.M.Sterling.

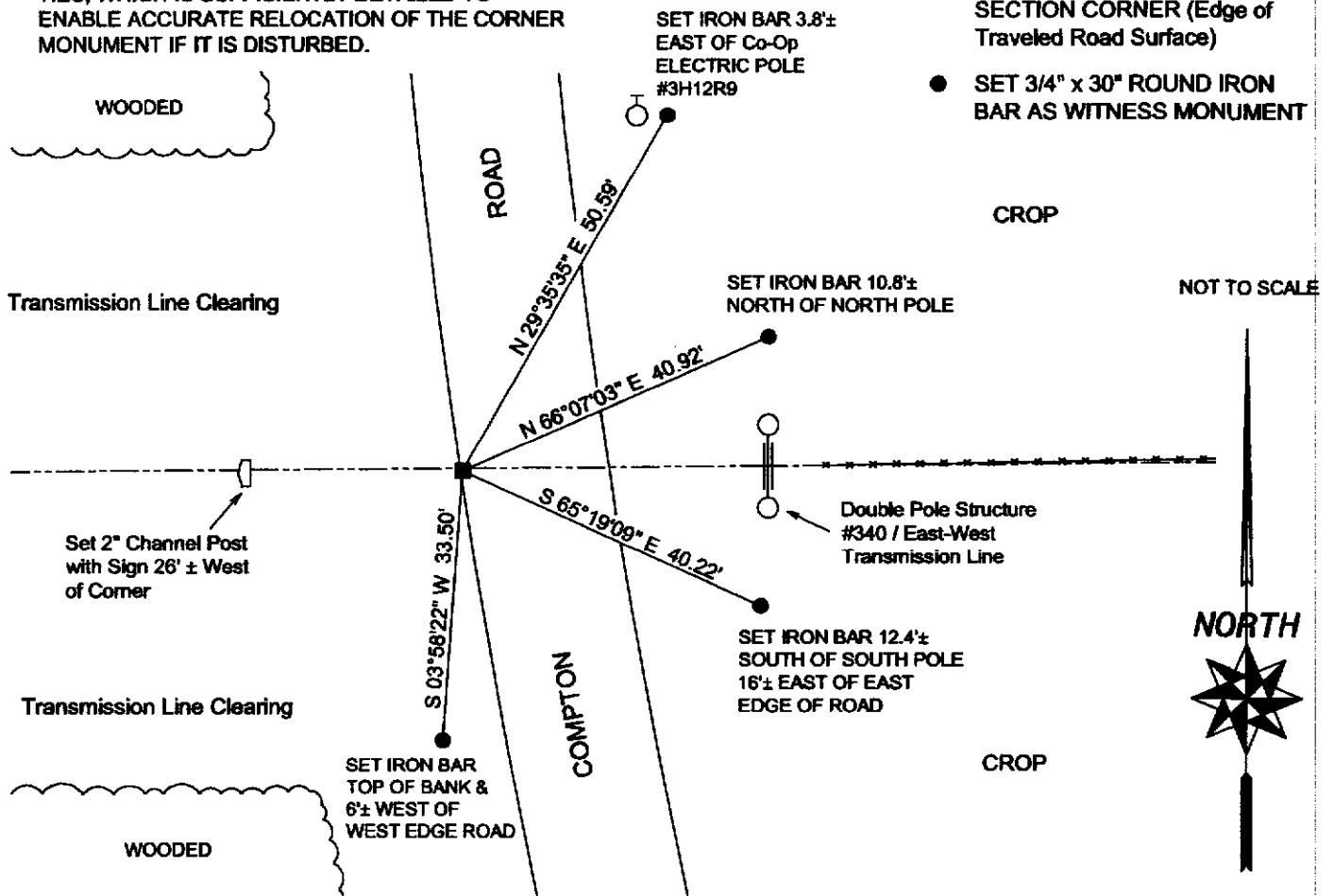
The north/south location of the corner agrees with information shown on Knower's survey. Measured distance to the occupied Center of Section 12 is only approximately 3.5 feet short of the distance recorded by Knower. The north/south (continued on reverse)

(C) IN THE PLAN VIEW DRAWING BELOW, PROVIDE REFERENCE TIES TO AT LEAST 4 WITNESS MONUMENTS OR, IF THE LOCATION IS WITHIN A MUNICIPALITY, TO AT LEAST 2 WITNESS MONUMENTS. (WITNESS MONUMENTS SHALL BE MADE OF CONCRETE, NATURAL STONE, IRON, OR OTHER EQUALLY DURABLE MATERIAL.) DESCRIBE WITNESS MONUMENTS.

(D) SHOW A PLAN VIEW DRAWING, DEPICTING THE RELEVANT MONUMENTS AND REFERENCE TIES, WHICH IS SUFFICIENTLY DETAILED TO ENABLE ACCURATE RELOCATION OF THE CORNER MONUMENT IF IT IS DISTURBED.

LEGEND

- SET 3/4" x 30" IRON BAR AT SECTION CORNER (Edge of Traveled Road Surface)
- SET 3/4" x 30" ROUND IRON BAR AS WITNESS MONUMENT



(E) DESCRIBE ANY MATERIAL DISCREPANCY BETWEEN THE LOCATION OF THE CORNER AS RESTORED OR REESTABLISHED AND THE LOCATION OF THAT CORNER AS PREVIOUSLY RESTORED OR REESTABLISHED BY DISTANCE AND DIRECTION. SHOW THE DISCREPANCY ON THE PLAN VIEW DRAWING UNDER (D), ABOVE. SHOW THE DISTANCES BETWEEN THE CORNER AS PREVIOUSLY RESTORED OR REESTABLISHED AND (1) THE CORNER AS RESTORED OR REESTABLISHED, AND (2) TO AT LEAST 2 OF THE WITNESS MONUMENTS AS SHOWN ON THE DRAWING IN (D), ABOVE.

N/A

(F) WAS THE CORNER RESTORED THROUGH ACCEPTANCE OF (1) AN OBLITERATED EVIDENCE LOCATION, OR (2) A FOUND PERPETUATED LOCATION?

(2) A FOUND PERPETUATED LOCATION (Perpetuated by Evidence of Occupation)

(G & H) WAS THE CORNER REESTABLISHED THROUGH LOST CORNER PROPORTIONATE METHODS? IF SO SHOW THE METHOD, INCLUDING THE DIRECTIONS AND DISTANCES TO OTHER PUBLIC LAND SURVEY CORNERS USED AS EVIDENCE OR USED FOR PROPORTIONING IN DETERMINING THE CORNER LOCATION.

N/A

(**) ANY ADDITIONAL INFORMATION RELATED TO CORNER LOCATION

CONTINUED FROM REVERSE - (B) DESCRIPTION OF EVIDENCE & PROCEDURES

location of the corner also agrees with Sterling's survey in Section 13. Measured distance to east/west occupation in the area of the SW corner of the NW 1/4 of the NE 1/4 of said Section 13 matches the distance shown on Sterling's survey.

The east/west position of the corner was reestablished by acceptance of occupation along the west line of the SE 1/4 of Section 12. The strength of said length of occupation was verified by locating north/south occupation in the area of the NW corner of the SW 1/4 of the SE 1/4 of Section 12. Said north/south occupation was found to be on line with occupation located at the Center of Section 12 and north/south occupation leaving Compton Road north of this corner. We also located old remains of an occupied corner at the NW corner of the SW 1/4 of the SW 1/4 of Section 12. Distance from said occupied corner east to the above mentioned north/south occupation at the NW corner of the SW 1/4 of the SE 1/4 measures only approximately 3 feet short of that recorded by Kowner. (Note that Kowner established the above mentioned NW corner of the SW 1/4 of the SW 1/4 by agreement. Measurements on Kowner's survey indicate that the location was well east of a straight line between the W 1/4 and SW corners of Section 12. This is also the case with the occupied corner.)

We also ran through numerous calculations using occupation shots taken in Section 13 and a computed location for the S 1/4 corner of Section 13 as shown by Zimmerman in 1984. These computations indicated that the corner location as shown hereon would agree with Sterling's work in Section 13.


On the date this corner was set, I was approached by Mr. Moore, land owner in the SE 1/4 of the NE 1/4 of Section 13. Mr. Moore mentioned knowing of a former witness tree for the NE corner of the SE 1/4 of the NE 1/4 of Section 13. Mr. Moore indicated that the stump of the former maple tree had just recently been pushed away. We calculated a computed location for the former bearing tree as per this corner, our computed location for Mr. Zimmerman's S 1/4 corner of Section 13, C.M. Sterling's recorded distance along the East line of the NE 1/4 of the NE 1/4 of Section 13 and C.M. Sterling's recorded witness tie. Our location fell just west of the location where Mr. Moore felt the tree had stood. This was considered acceptable as the east/west position of the corner location shown hereon was established by acceptance of occupation in Section 12. Section 12 was subdivided by W.H.Kowner prior to Sterling's survey in Section 13. I had earlier noticed a possible conflict between the surveys by Kowner and Sterling. Both surveyors (surveys only 7 years apart) tied the N 1/4 corner of Section 13 to an 8" Maple in an east/northeast direction. These two trees would have been only approximately 3 feet apart had the surveyor's utilized the same corner. Thus, if both surveyors used the same tree their corners would have been approximately 3 feet apart east and west. Given this possible slight disagreement in east/west corner location, the extent of W.H.Kowner's work in Section 12 and the fact that Kowner's work had preceded that by Sterling, I moved forward with basing the east/west position of the corner on north/south occupation along the West line of the SE 1/4 of Section 12.

CORNER HISTORY:

- Original government corner location established by A.L. Brown in 1846.
- W.H.Kowner renewed the corner in October of 1884 as part of a subdivision of Section 12, T13N, R2W.
- C.M. Sterling renewed the corner in March of 1891 as part of a subdivision of Section 13, T13N, R2W.

AFFIX LAND SURVEYOR SEAL

(I) I, ROBERT M. LAMPMAN, CERTIFY THAT THE LOCATION SHOWN ON THIS RECORD WAS DETERMINED BY ME OR UNDER MY DIRECTION AND CONTROL AND THAT THIS U.S. PUBLIC LAND SURVEY MONUMENT RECORD IS CORRECT AND COMPLETE TO THE BEST OF MY KNOWLEDGE AND BELIEF.


SIGNATURE

1-11-05
DATE

