

VERNON COUNTY CERTIFIED U.S. PUBLIC LAND SURVEY MONUMENT RECORD

INSTRUCTIONS: THIS RECORD SHALL SHOW THE LOCATION OF THE CORNER AND SHALL INCLUDE ALL OF THE FOLLOWING ELEMENTS (A-I)

(A) IDENTIFY THE CORNER BY REFERENCE TO THE U.S. PUBLIC LAND SURVEY SYSTEM

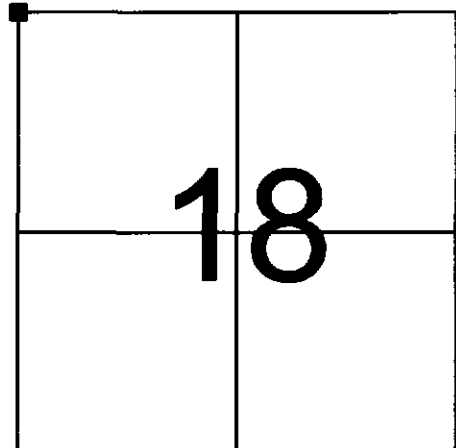
■ = CORNER MONUMENT RESTORED

WITNESSES TO CORNER LOCATION:

- 1) RONALD D. JASPERSON
- 2) JASON L. CANCE

VERNON COUNTY COORDINATES

NORTHING: 168,838.36
 EASTING: 791,176.86



SECTION 18, TOWN 13 NORTH, RANGE 1 WEST

(B) DESCRIBE ANY RECORD EVIDENCE, MONUMENT EVIDENCE, OCCUPATIONAL EVIDENCE, TESTIMONIAL EVIDENCE OR ANY OTHER MATERIAL EVIDENCE YOU CONSIDERED, AND WHETHER THE MONUMENT WAS FOUND OR PLACED.

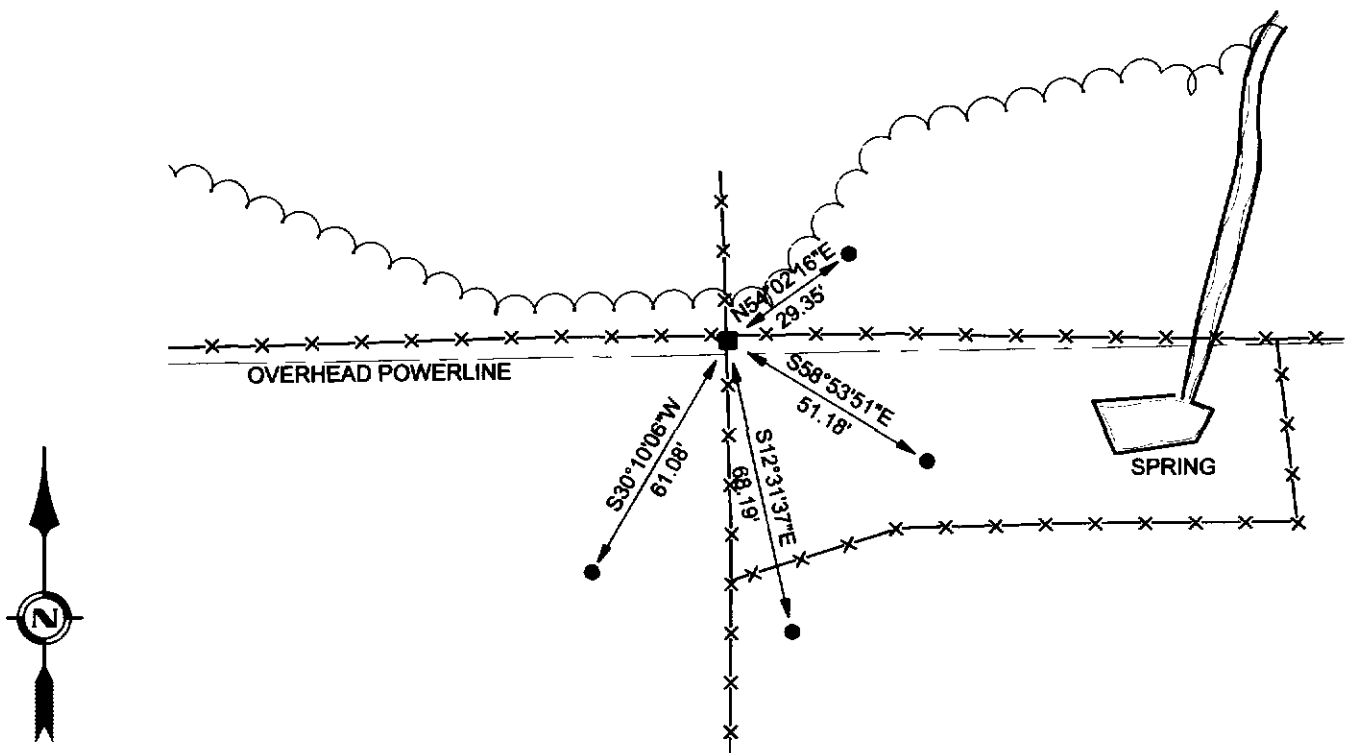
NO CORNER FOUND. FOUND TIES TO CORNER FROM BLAKESLEE TIE SHEET DATED 1986.
 RESET CORNER FROM FOUND TIES.

(C) IN THE PLAN VIEW DRAWING BELOW, PROVIDE REFERENCE TIES TO AT LEAST 4 WITNESS MONUMENTS OR, IF THE LOCATION IS WITHIN A MUNICIPALITY, TO AT LEAST 2 WITNESS MONUMENTS. (WITNESS MONUMENTS SHALL BE MADE OF CONCRETE, NATURAL STONE, IRON, OR OTHER EQUALLY DURABLE MATERIAL.) DESCRIBE WITNESS MONUMENTS.

(D) SHOW A PLAN VIEW DRAWING, DEPICTING THE RELEVANT MONUMENTS AND REFERENCE TIES, WHICH IS SUFFICIENTLY DETAILED TO ENABLE ACCURATE RELOCATION OF THE CORNER MONUMENT IF IT IS DISTURBED.

LEGEND

- LUNDE MONUMENT
- 3/4" REBAR



BEARINGS ARE BASED ON THE VERNON COUNTY COORDINATE SYSTEM

(E) DESCRIBE ANY MATERIAL DISCREPANCY BETWEEN THE LOCATION OF THE CORNER AS RESTORED OR REESTABLISHED AND THE LOCATION OF THAT CORNER AS PREVIOUSLY RESTORED OR REESTABLISHED BY DISTANCE AND DIRECTION. SHOW THE DISCREPANCY ON THE PLAN VIEW DRAWING UNDER (D), ABOVE. SHOW THE DISTANCES BETWEEN THE CORNER AS PREVIOUSLY RESTORED OR REESTABLISHED AND (1) THE CORNER AS RESTORED OR REESTABLISHED, AND (2) TO AT LEAST 2 OF THE WITNESS MONUMENTS AS SHOWN ON THE DRAWING IN (D), ABOVE.

N/A

(F) WAS THE CORNER RESTORED THROUGH ACCEPTANCE OF (1) AN OBLITERATED EVIDENCE LOCATION, OR (2) A FOUND PERPETUATED LOCATION?

N/A

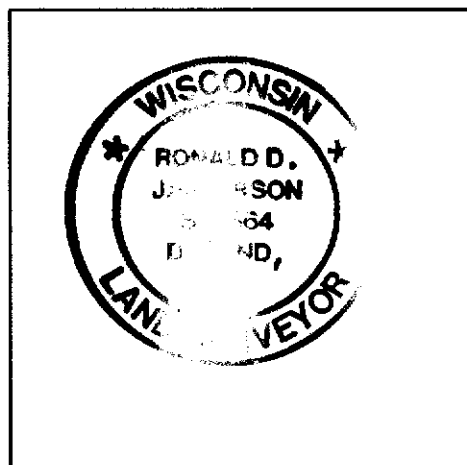
(G & H) WAS THE CORNER REESTABLISHED THROUGH LOST CORNER PROPORTIONATE METHODS? IF SO SHOW THE METHOD, INCLUDING THE DIRECTIONS AND DISTANCES TO OTHER PUBLIC LAND SURVEY CORNERS USED AS EVIDENCE OR USED FOR PROPORTIONING IN DETERMINING THE CORNER LOCATION.

N/A

AFFIX LAND SURVEYOR SEAL

(I) I, RONALD D. JASPERSON, CERTIFY THAT THE LOCATION SHOWN ON THIS RECORD WAS DETERMINED BY ME OR UNDER MY DIRECTION AND CONTROL AND THAT THIS U.S. PUBLIC LAND SURVEY MONUMENT RECORD IS CORRECT AND COMPLETE TO THE BEST OF MY KNOWLEDGE AND BELIEF.

Ronald D. Jasperson 5.13.02
SIGNATURE DATE

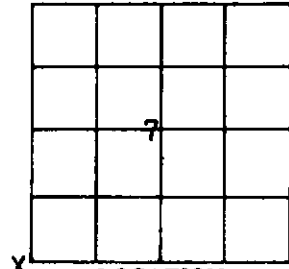


VERNON COUNTY Government Land Corner Certificate

TYPE OF MONUMENT: 2" x 30" iron pipe set ELEVATION - M.S.L. DATUM: _____
 STATE PLANE COORDINATES: N _____ THETA ANGLE: _____
 Wis. South Zone E _____ FIELD BOOK: _____ PAGE _____

Basis for Monument Location

(Use reverse side if necessary.
 Show info such as: History of corner, with reference to Vol. and page,
 dates, surveyor; exact description of monument found; if location
 computed, by taped or EDM traverse; landowner remarks, witnesses,
 etc.)



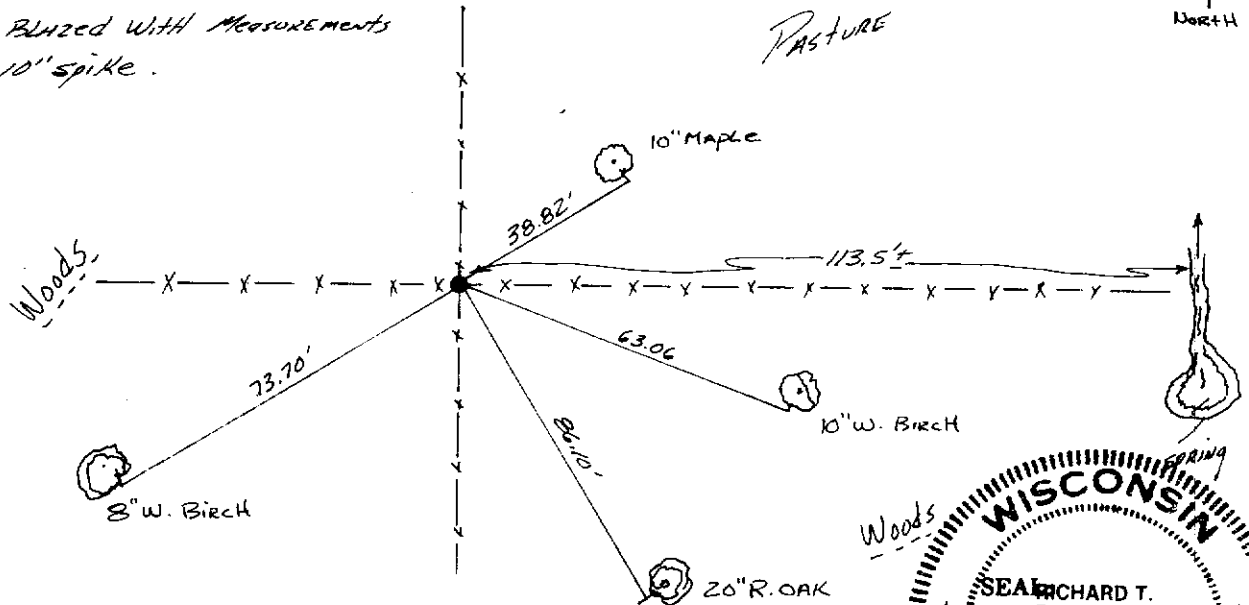
Researched County Survey Records pages 246 and 377. We could not find any of the B.T.s as mentioned in the Gov't notes or the ones listed on page 246 done in 1884. At the occupied location there is an old fence corner which was reported to us by local land owners as being in the same location for many years. We measured 113.5 feet East from this fence corner and found that it fit the call in the Gov't notes for the branch of a spring. I monumented the found fence corner as being the best evidence of the corners original position.

CITY, VILLAGE or TOWN Union
 SECTION 7
 TOWN 13N
 RANGE 1W
 DRAFTED BY R. Blakeslee
 FIELD CREW Blakeslee and Nachtigal

TIE SKETCH

(Show at least four ties. Also, fence lines, C of roads, and any other helpful factors and features.)

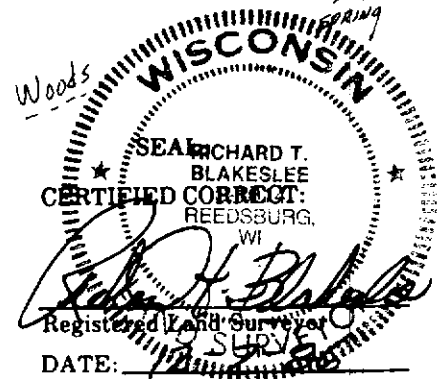
Note: ALL TREES BLAZED WITH MEASUREMENTS
 MADE TO 10" SPIKE.



CORNER MAINTENANCE INFO

SEAL:

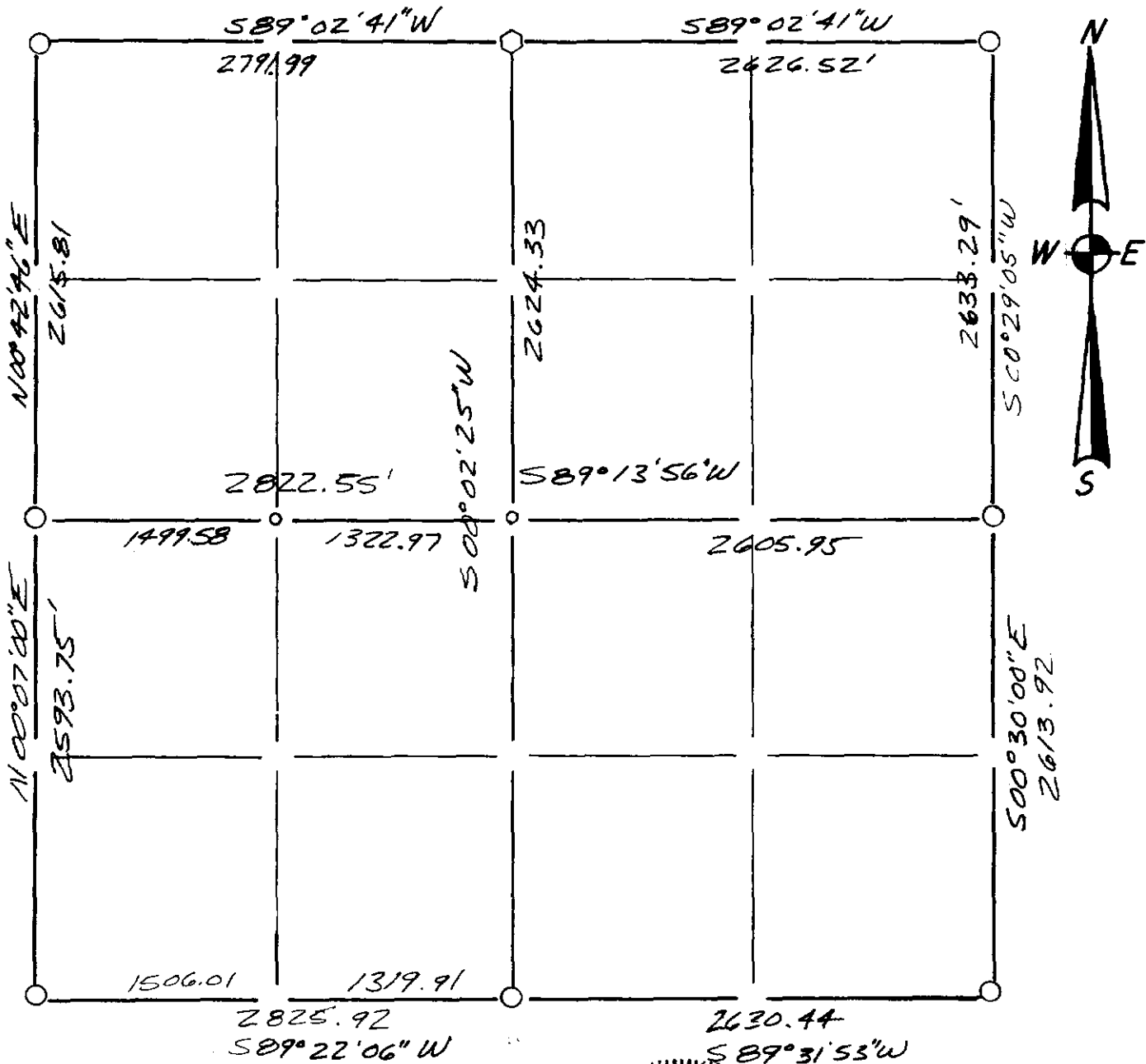
8



For Co. Surveyor Filing Use → CORNER NO. _____

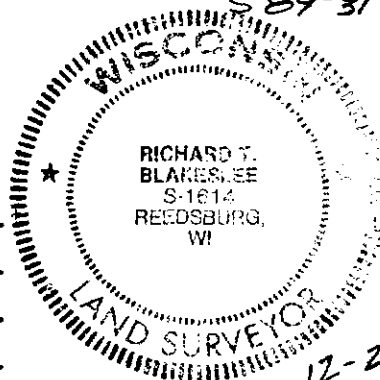
Section Summary and Index

Section 7 - Town 13N - Range 1W



LEGEND

- ⊙ - Harrison cast iron monument.
- - Stone or concrete monument.
- - Other 2" x 30" IRON Pipe Set
- ◊ - 1/2" x 30" IRON Pipe Set
- - 3/4" x 24" Re-BAR Set



12-2-86
Richard J. Blakeslee

Note:

SURVEY SUMMARY ON BACK!

Summary for Pgs. 2-9

