

STATE OF WISCONSIN
County of VERNON } ss.

RECORD OF LAND CORNER PERPETUATION

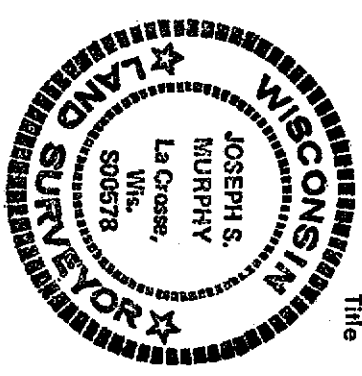
264332

10549303 44

I, JOSEPH S. MURPHY, hereby certify that the information shown hereon correctly describes the original corner, resurvey information, evidence found, type of monument found or placed, and witness monuments and accessories used to perpetuate the location of the original or established corner.

Dated this 14th day of NOVEMBER, 1975 at LACROSSE, Wisconsin.

REGISTERED LAND SURVEYOR-00578



Joseph S. Murphy
s. _____

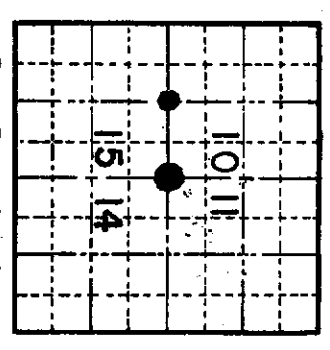
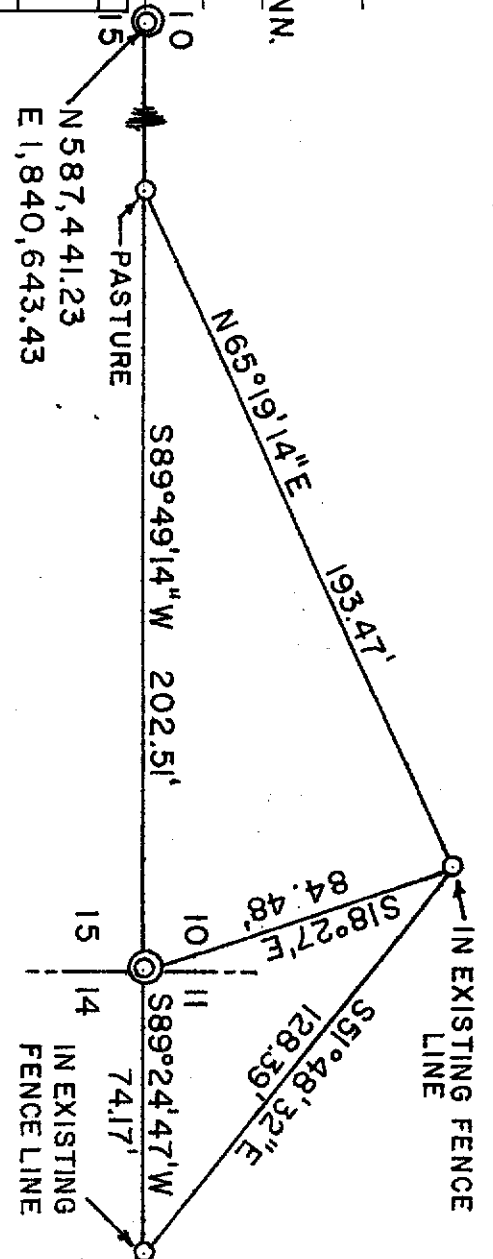
Witness to corner location:
JAMES WALDOW LACRESSENT, MINN.

WISCONSIN COORDINATE SYSTEM	
North	537,428.2
East	1,843,266.49
Elevation	Theta Angle
Vertical control order	
Horizontal control order	

History of original corner establishment:

Resurvey information:
LOCATIONS OF SECTION CORNER AND QUARTER (1/4) CORNER ARE BASED ON EXISTING PHYSICAL FEATURES AND INFORMATION FURNISHED BY THE U.S.C.E. ST. PAUL DIST. OFFICE, ST. PAUL, MINN. REFER TO FILE NO. N.C.S.E.D.-F.
Corner found or evidence acquired for re-establishment of corner location:

Drawing of corner and witness monuments, references and accessories used to perpetuate corner location:
SECTION CORNER, 3" BRASS MARKER SET IN 8" X 18" CONCRETE CYLINDER.
1/4 CORNER, 1" X 30" I.P. WITH STAMPED ALUMINUM CAP, ALL OTHER MTS. ARE 1" X 30" 1.13/LBS. L.F. IRON PIPES.



Date of Survey 8-18-75

Scale 1" = 50'

Drafted by JSM
Date 9-3-75

21A

Recorder's Office
CO., WIS.
Rec'd for Record this 4 day of Dec.
1975 at 1:10 O'clock PM
and Recorded in Vol. 1 of County Maps
Page 44
Edward J. Wilson
Register of Deeds
S.W.-10-13-20

Whitehall Printing Co., Whitehall, Wis. 54773