



Stock No. 26273

VERNON COUNTY CERTIFIED U.S. PUBLIC LAND SURVEY MONUMENT RECORD

INSTRUCTIONS: THIS RECORD SHALL SHOW THE LOCATION OF THE CORNER AND SHALL INCLUDE ALL OF THE FOLLOWING ELEMENTS (A-I)

(A) IDENTIFY THE CORNER BY REFERENCE TO THE U.S. PUBLIC LAND SURVEY SYSTEM

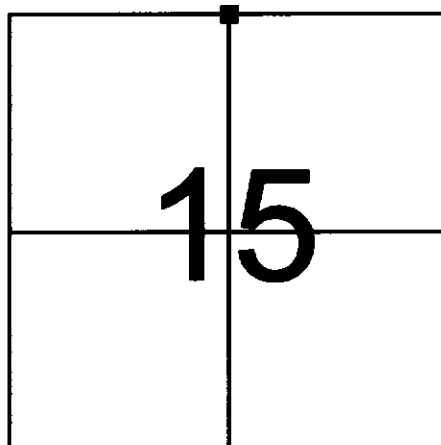
■ = CORNER MONUMENT RESTORED

WITNESSES TO CORNER LOCATION:

- 1) RONALD D. JASPERSON
- 2) JASON L. CANCE

VERNON COUNTY COORDINATES

NORTHING: 168,814.40
EASTING: 778,078.03



SECTION 15, TOWN 13 NORTH, RANGE 2 WEST

(B) DESCRIBE ANY RECORD EVIDENCE, MONUMENT EVIDENCE, OCCUPATIONAL EVIDENCE, TESTIMONIAL EVIDENCE OR ANY OTHER MATERIAL EVIDENCE YOU CONSIDERED, AND WHETHER THE MONUMENT WAS FOUND OR PLACED.

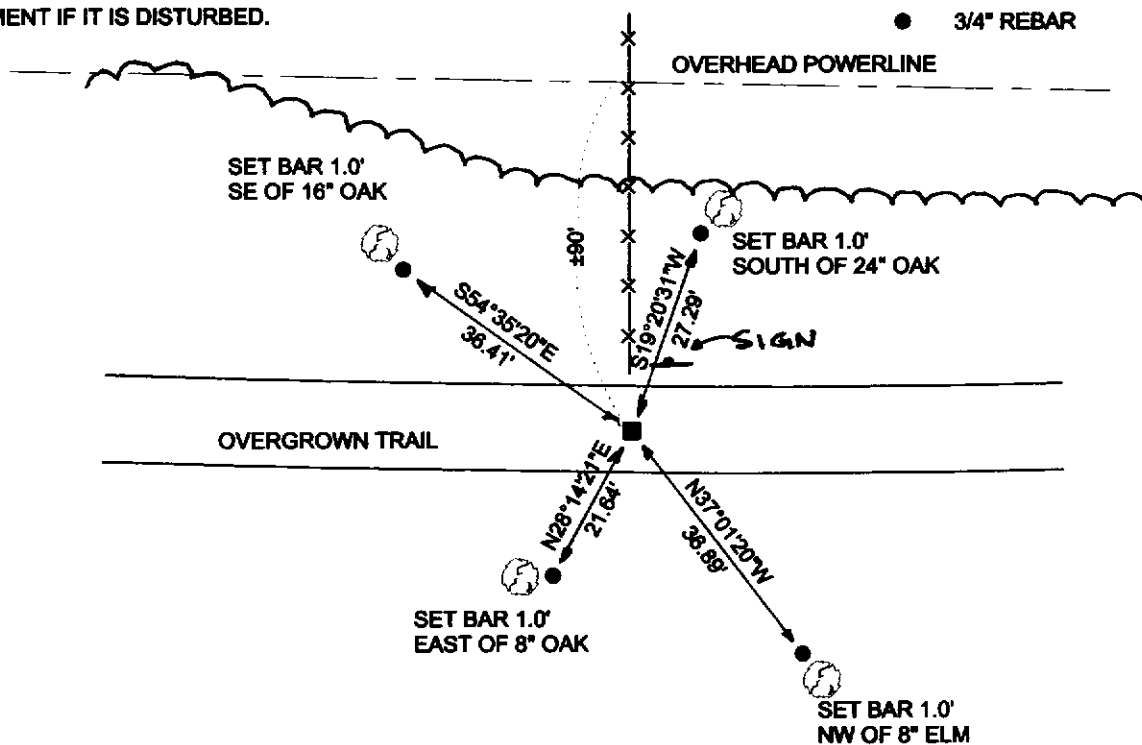
FOUND 1" I.P. W/ 2" ALUMINUM CAP. ACCEPTED CORNER AT PRESENT LOCATION.

(C) IN THE PLAN VIEW DRAWING BELOW, PROVIDE REFERENCE TIES TO AT LEAST 4 WITNESS MONUMENTS OR, IF THE LOCATION IS WITHIN A MUNICIPALITY, TO AT LEAST 2 WITNESS MONUMENTS. (WITNESS MONUMENTS SHALL BE MADE OF CONCRETE, NATURAL STONE, IRON, OR OTHER EQUALLY DURABLE MATERIAL.) DESCRIBE WITNESS MONUMENTS.

(D) SHOW A PLAN VIEW DRAWING, DEPICTING THE RELEVANT MONUMENTS AND REFERENCE TIES, WHICH IS SUFFICIENTLY DETAILED TO ENABLE ACCURATE RELOCATION OF THE CORNER MONUMENT IF IT IS DISTURBED.

LEGEND

- 1" I.P. W/ 2" ALUMINUM CAP
- 3/4" REBAR



BEARINGS ARE BASED ON THE VERNON COUNTY COORDINATE SYSTEM

(E) DESCRIBE ANY MATERIAL DISCREPANCY BETWEEN THE LOCATION OF THE CORNER AS RESTORED OR REESTABLISHED AND THE LOCATION OF THAT CORNER AS PREVIOUSLY RESTORED OR REESTABLISHED BY DISTANCE AND DIRECTION. SHOW THE DISCREPANCY ON THE PLAN VIEW DRAWING UNDER (D), ABOVE. SHOW THE DISTANCES BETWEEN THE CORNER AS PREVIOUSLY RESTORED OR REESTABLISHED AND (1) THE CORNER AS RESTORED OR REESTABLISHED, AND (2) TO AT LEAST 2 OF THE WITNESS MONUMENTS AS SHOWN ON THE DRAWING IN (D), ABOVE.

N/A

(F) WAS THE CORNER RESTORED THROUGH ACCEPTANCE OF (1) AN OBLITERATED EVIDENCE LOCATION, OR (2) A FOUND PERPETUATED LOCATION?

N/A

(G & H) WAS THE CORNER REESTABLISHED THROUGH LOST CORNER PROPORTIONATE METHODS? IF SO SHOW THE METHOD, INCLUDING THE DIRECTIONS AND DISTANCES TO OTHER PUBLIC LAND SURVEY CORNERS USED AS EVIDENCE OR USED FOR PROPORTIONING IN DETERMINING THE CORNER LOCATION.

N/A

AFFIX LAND SURVEYOR SEAL

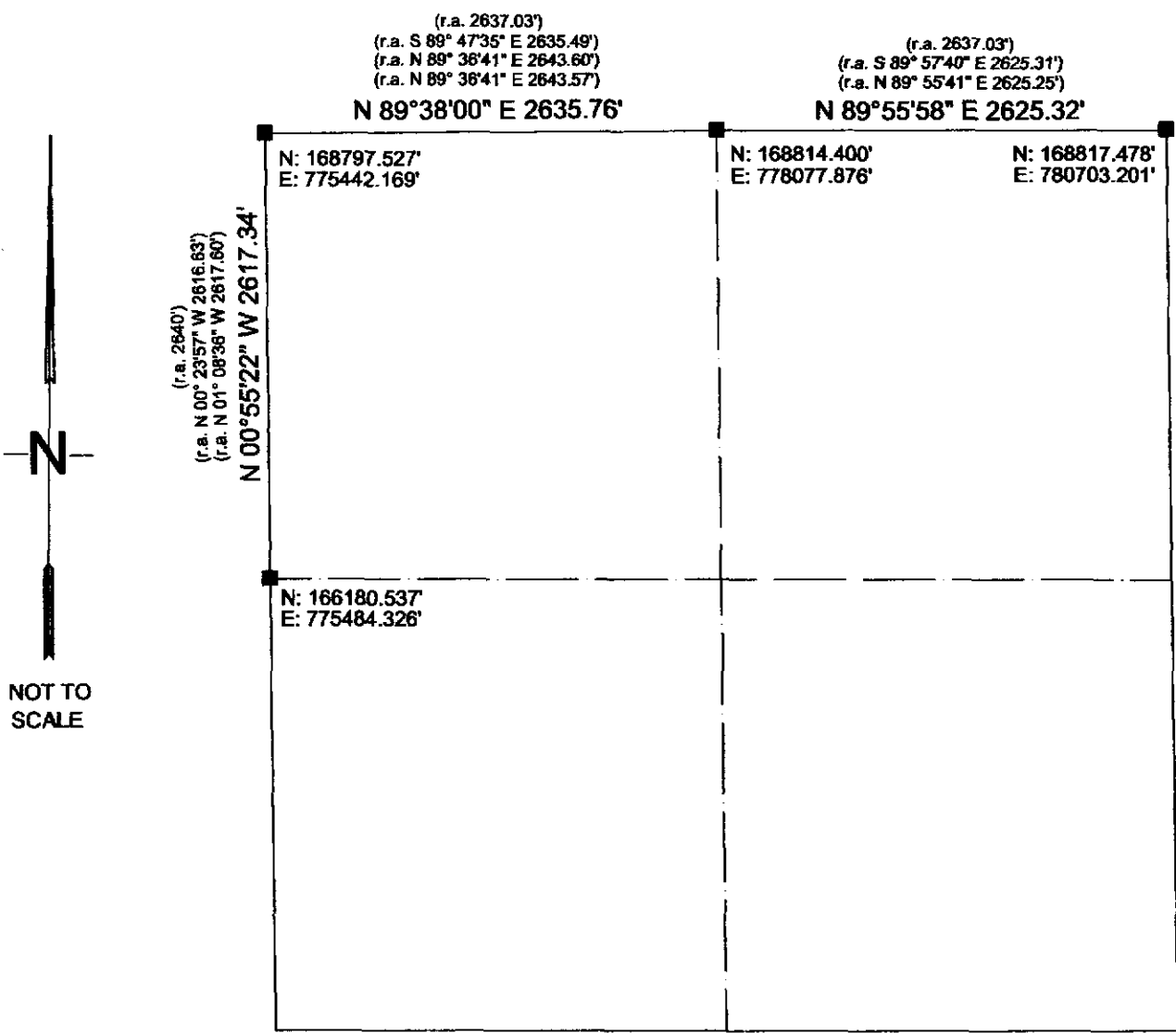
(I) I, RONALD D. JASPERSON, CERTIFY THAT THE LOCATION SHOWN ON THIS RECORD WAS DETERMINED BY ME OR UNDER MY DIRECTION AND CONTROL AND THAT THIS U.S. PUBLIC LAND SURVEY MONUMENT RECORD IS CORRECT AND COMPLETE TO THE BEST OF MY KNOWLEDGE AND BELIEF.

Ronald D. Jaspersen 5-9-02
SIGNATURE DATE



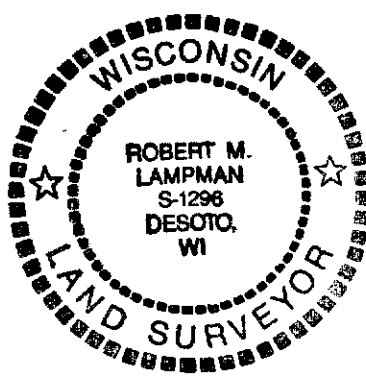
RECEIVED
 MAR 3 2004
 BY: *G. Jacobson*

VERNON COUNTY SECTION DATA SHEET
 SECTION 15, TOWN 13 NORTH, RANGE 2 WEST



NOT TO SCALE

Bearings are referenced to Grid North, Vernon County Coordinate System.

	CORNER	Type of Corner Monument / Comments
<i>[Signature]</i> Surveyor's Signature	W 1/4 Corner	EXISTING 2" IRON PIPE W/ BRASS CAP
Date: <i>2-28-04</i>	NW Corner	LUNDE MONUMENT SET BY LAMPMAN 2-25-04
Surveyor's Seal	N 1/4 Corner	EXISTING IRON PIPE W/ 2" ALUMINUM CAP
	NE Corner	EXISTING BRASS CAPPED MONUMENT

STATE OF WISCONSIN

RECORD OF LAND CORNER PERPETUATION

County of VERNON } ss.

I, JOSEPH S. MURPHY, hereby certify that the information shown herean correctly describes the original corner, resurvey information, evidence found, type of monument found or placed, and witness monuments and accessories used to perpetuate the location of the original or established corner.

Dated this 14th day of NOVEMBER, 1975 at LACROSSE, Wisconsin.

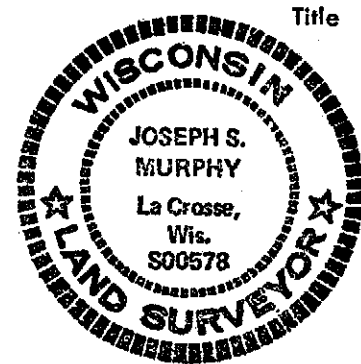
History of original corner establishment:

Resurvey information:

LOCATIONS OF SECTION CORNER AND QUARTER (1/4) CORNER ARE BASED ON EXISTING PHYSICAL FEATURES AND INFORMATION FURNISHED BY THE U.S.C.E. ST. PAUL DIST. OFFICE, ST. PAUL, MINN. REFER TO FILE No. N.C.S.E.D.-F.

Corner found or evidence acquired for re-establishment of corner location:

REGISTERED LAND SURVEYOR- 00578

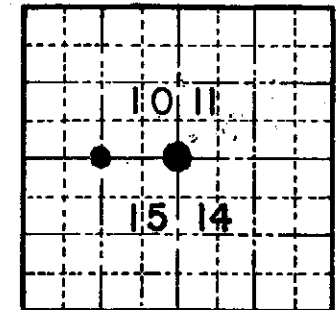
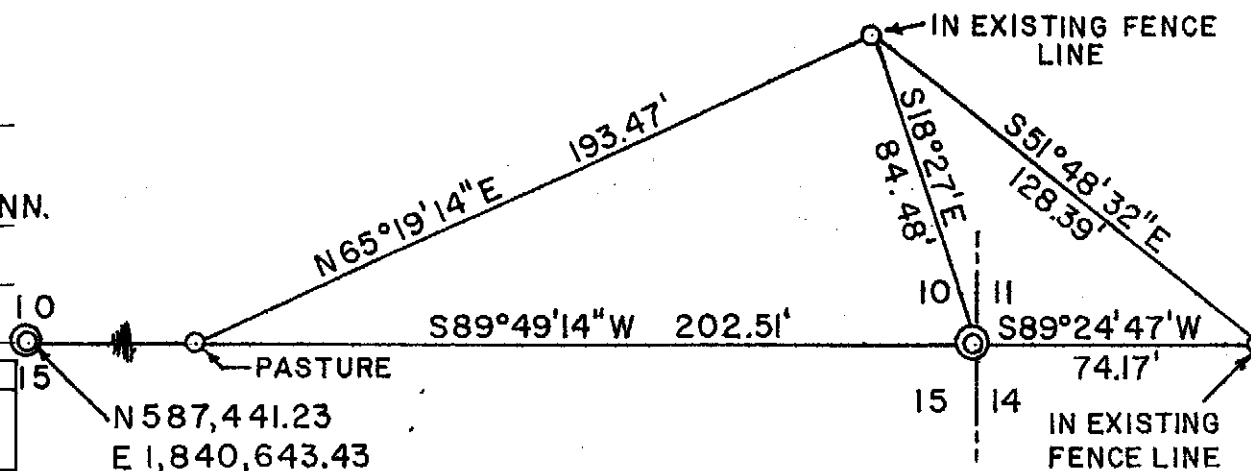


Joseph S. Murphy s. _____

Witness to corner location:

JAMES WALDOW LACRESCENT, MINN.

Drawing of corner and witness monuments, references and accessories used to perpetuate corner location: SECTION CORNER, 3" BRASS MARKER SET IN 8" X 18" CONCRETE CYLINDER. 1/4 CORNER, 1" X 30" I.P. WITH STAMPED ALUMINUM CAP, ALL OTHER MTS. ARE 1" X 30" 1.13/ LBS. L. F. IRON PIPES.



O = Corner Location

SECTION 10
T. 13 N. - R. 2 E-W.
WISCONSIN

WISCONSIN COORDINATE SYSTEM	
North	537,428.2
East	1,843,266.49
Elevation	Theta Angle
Vertical control order	
Horizontal control order	

Date of Survey 8-18-75

Scale 1" = 50'

Drafted by JSM
Date 9-3-75

21A

REGISTERS OFFICE } ss.
L.C.O., VIC.
Rec'd for Record this 14 day of Nov
1975 at Lacrosse Wis.
and Recorded in Vol. 105-11-11-44
Page 44
James Waldow Lacscent
Register of Deeds
S.W. 10-13-200

Whitcomb Printing Co., Whitehall, Wis. 54773