

VERNON COUNTY COORDINATE FORM

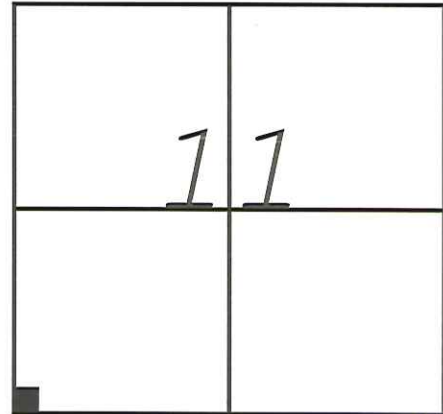
"As An Addendum To"

A CERTIFIED U.S. PUBLIC LAND SURVEY MONUMENT RECORD

INSTRUCTIONS: THIS RECORD FORM SHOULD BE USED WHEN COORDINATES ARE PROVIDED FOR A PUBLIC LAND SURVEY CORNER AND SHALL INCLUDE ALL OF THE FOLLOWING ELEMENTS (A-D)

(A) IDENTIFY THE CORNER BY REFERENCE TO THE U.S. PUBLIC LAND SURVEY SYSTEM IN DIAGRAM AT RIGHT

■ = CORNER MONUMENT



T 13 N, R 2 EW

(B) COORDINATES:

GEOGRAPHIC (Degrees Minutes Decimal Seconds to 4 places):

LATITUDE: 43°36'36.6701"

LONGITUDE: 90°35'30.8645"

ELLIPSOID HT (m): 347.15

HORIZONTAL DATUM: NAD 83 (2011)

ORTHOMETRIC HT (U.S. ft): 1249.5'

VERTICAL DATUM: NAVD 88

VERNON COUNTY (U.S. FEET)

Cord. Quality (+/-)

NORTHING (Y): 168817.53'

0.05'

EASTING (X): 780703.24'

0.05'

METHOD USED TO COMPUTE COORDINATES (check and complete as applicable):

RTK Observations Static Baselines OPUS Solution (attach copy of OPUS report)

Combination of conventional procedures with GPS observations to set temporary control

Was a Least Squares Adjustment Used to Compute Coordinate? Yes / **No**

For Non-OPUS Based Solutions, List the Control Stations Used for Coordinate Computations (a minimum of 2 different control stations or 2 different time combinations from the same control station are required):

Obs. #	Control Station Name	Station Coordinates (Lat/Long)	Date	Time
1	Rockton GPS	43°38'44.97186" 90°36'05.06654"	9-24-2013	10:30AM
2	Rockton GPS	43°38'44.97186" 90°36'05.06654"	10-22-2013	11:00AM

* Please List Additional Control Stations Used on Back of Form

When a direct observation of the corner is not possible, and a combination of different GPS and/or conventional procedures must be used to determine coordinate values, provide a brief description of your procedures on the back of form.

(C) REASON FOR COORDINATE SUBMITTAL (check one):

Being Filed With a New U.S. PLS Monument Record

To Correct the Coordinates Listed on a Previously Filed PLS Monument Record

To Provide Coordinates for a Previously Filed PLS Monument Record without Coordinates

To Provide Supplemental Coordinates for a Previously Filed PLS Monument Record

R.L.S. & DATE OF PLS MONUMENT RECORD: _____

(D) AGENT(S) PERFORMING GPS OBSERVATIONS & COORDINATE COMPUTATION

1) Richard Marks

2) Daniel Marks

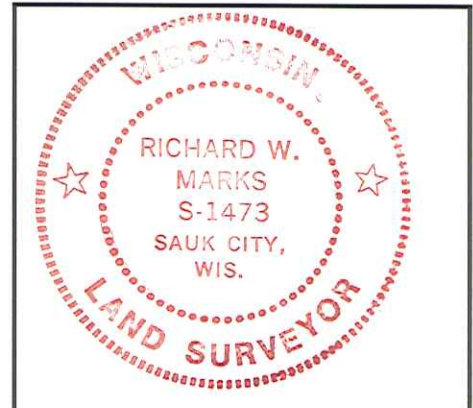
I, Richard Marks
CERTIFY THAT THE COORDINATES PROVIDED ON THIS RECORD WERE DETERMINED BY ME OR UNDER MY DIRECTION AND CONTROL AND THAT THIS COORDINATE SUBMISSION FORM IS CORRECT AND COMPLETE TO THE BEST OF MY KNOWLEDGE AND BELIEF.

SIGNATURE

10-24-2013

DATE

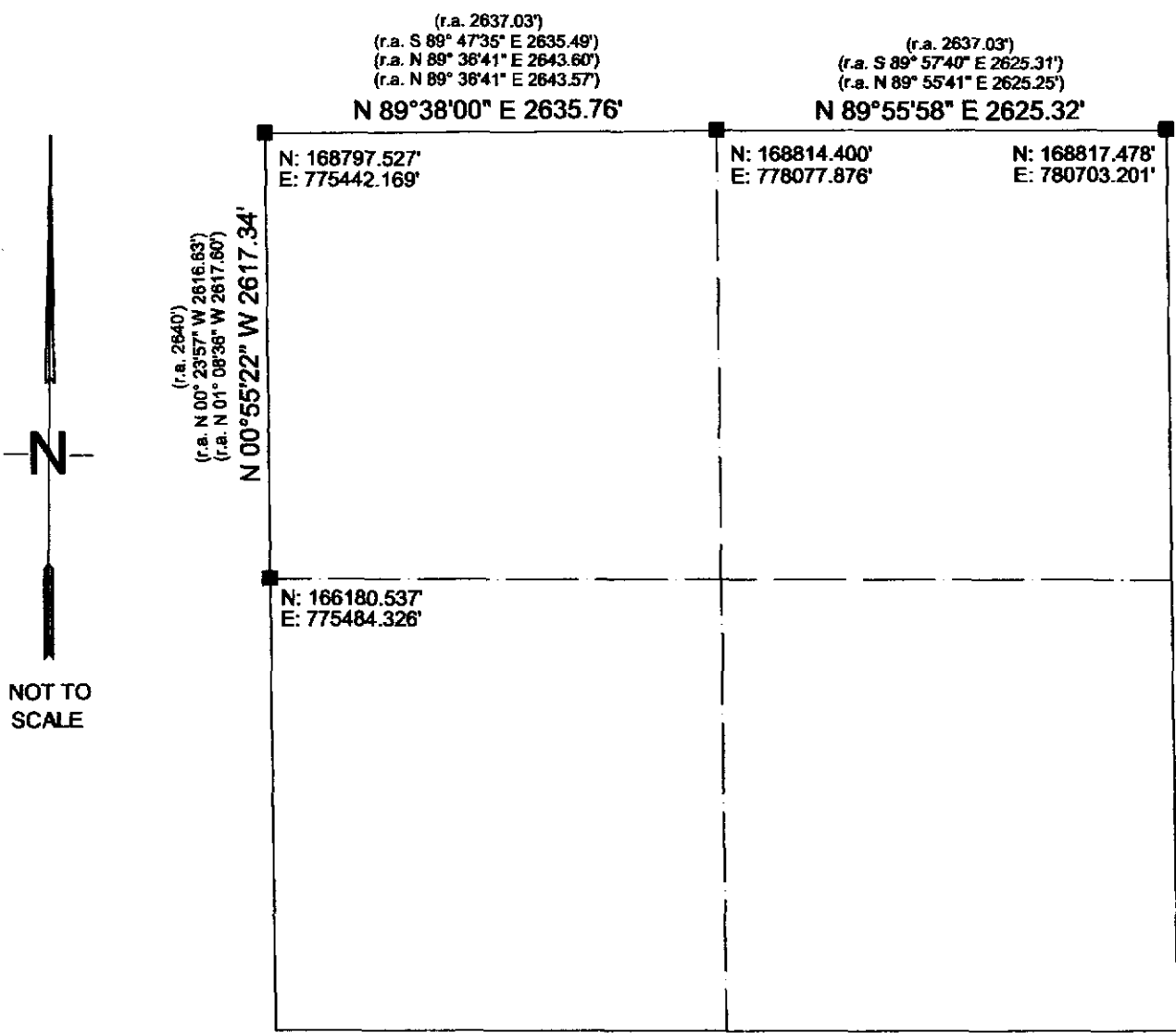
Seal



* Please Provide Any Additional Notes/Information on Back of Form

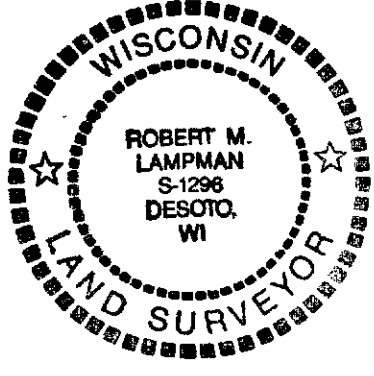
RECEIVED
 MAR 3 2004
 BY: *G. Jacobson*

VERNON COUNTY SECTION DATA SHEET
 SECTION 15, TOWN 13 NORTH, RANGE 2 WEST



NOT TO SCALE

Bearings are referenced to Grid North, Vernon County Coordinate System.

	CORNER	Type of Corner Monument / Comments
<i>[Signature]</i> Surveyor's Signature	W 1/4 Corner	EXISTING 2" IRON PIPE W/ BRASS CAP
Date: <i>2-28-04</i>	NW Corner	LUNDE MONUMENT SET BY LAMPMAN 2-25-04
Surveyor's Seal	N 1/4 Corner	EXISTING IRON PIPE W/ 2" ALUMINUM CAP
	NE Corner	EXISTING BRASS CAPPED MONUMENT

10:00 Am.

DEC 5 1983

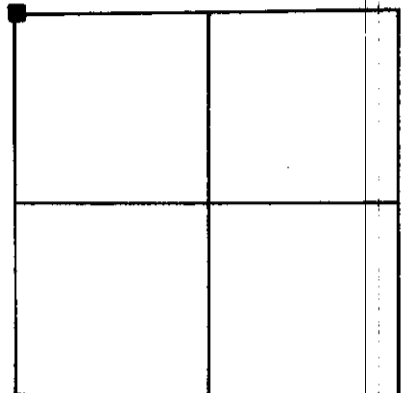
U. S. PUBLIC LAND SURVEY MONUMENT RECORD
Vernon County, Wisconsin.

Basis for monument location.

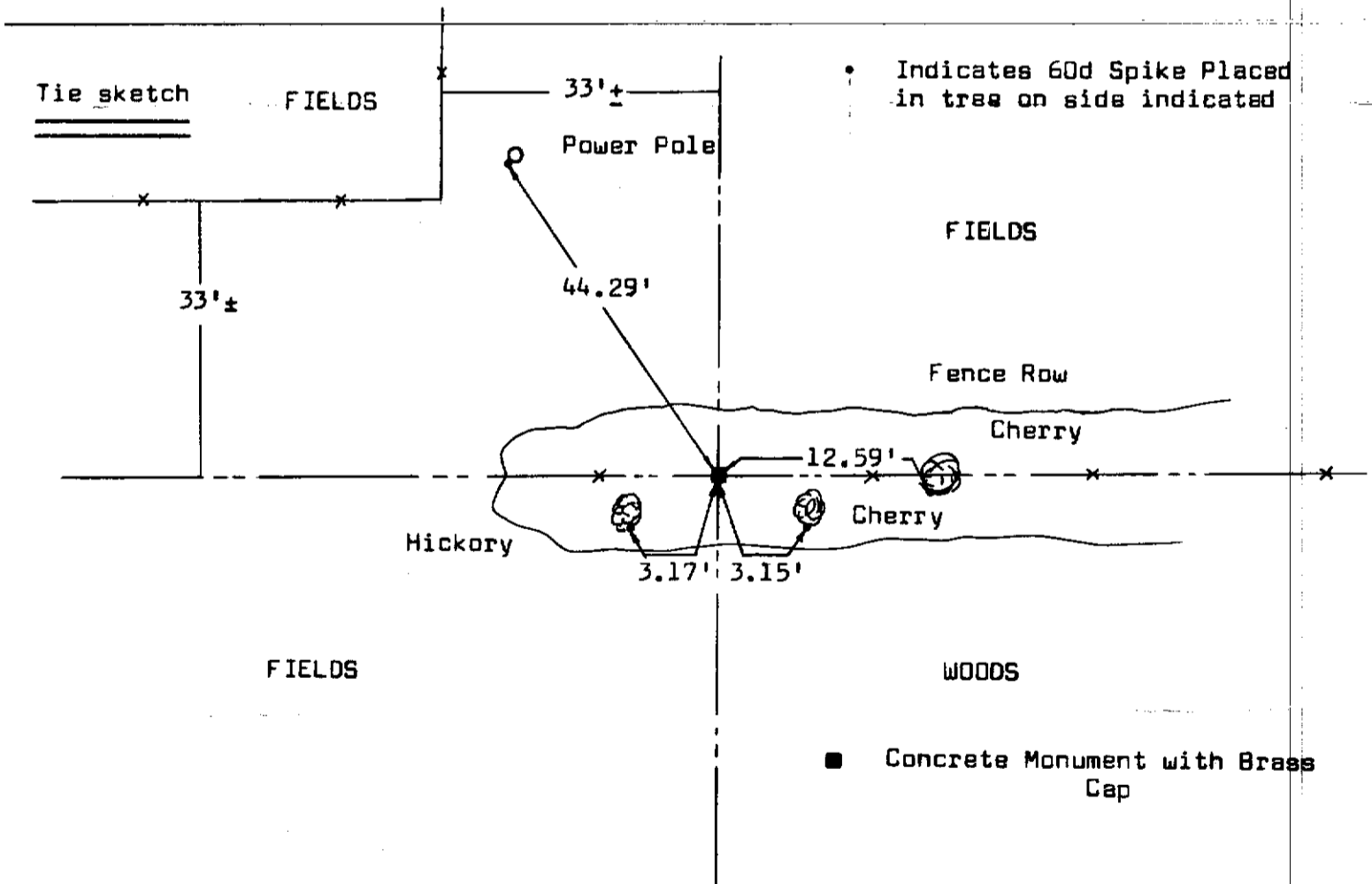
Located concrete monument with a brass cap on top. All ties were existing but could not locate tie sheet in records.



Section 14, T13N, R2 W



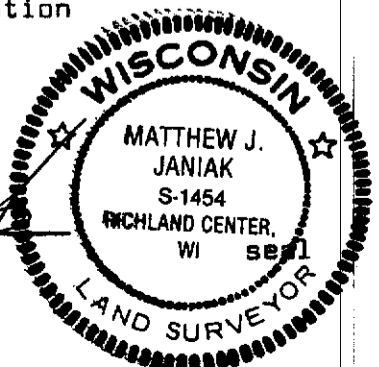
Corner Location
(Indicate by ■)



I, Matthew J. Janiak Certify that the corner location shown hereon this record was determined by me or under my direction and control and that this U. S. Public Land Survey Monument Record is correct and complete to the best of my knowledge and belief.

9/27/83
Date

Matthew J. Janiak
Registered Land Surveyor



STATE OF WISCONSIN

RECORD OF LAND CORNER PERPETUATION

County of VERNON

ss.

History of original corner establishment:

I, JOSEPH S. MURPHY, hereby certify that the information shown herean correctly describes the original corner, resurvey information, evidence found, type of monument found or placed, and witness monuments and accessories used to perpetuate the location of the original or established corner.

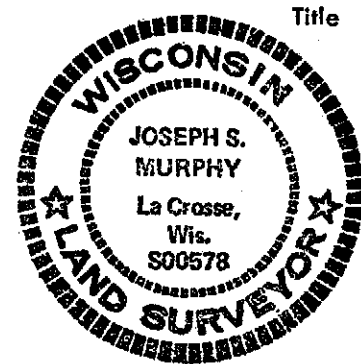
Resurvey information:

LOCATIONS OF SECTION CORNER AND QUARTER (1/4) CORNER ARE BASED ON EXISTING PHYSICAL FEATURES AND INFORMATION FURNISHED BY THE U.S.C.E. ST. PAUL DIST. OFFICE, ST. PAUL, MINN. REFER TO FILE No. N.C.S.E.D.-F.

Dated this 14th day of NOVEMBER, 1975 at LACROSSE, Wisconsin.

Corner found or evidence acquired for re-establishment of corner location:

REGISTERED LAND SURVEYOR- 00578

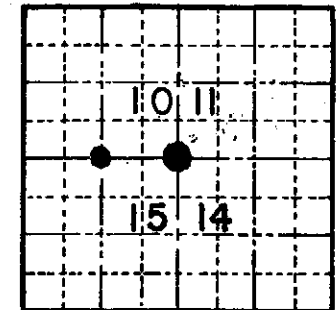
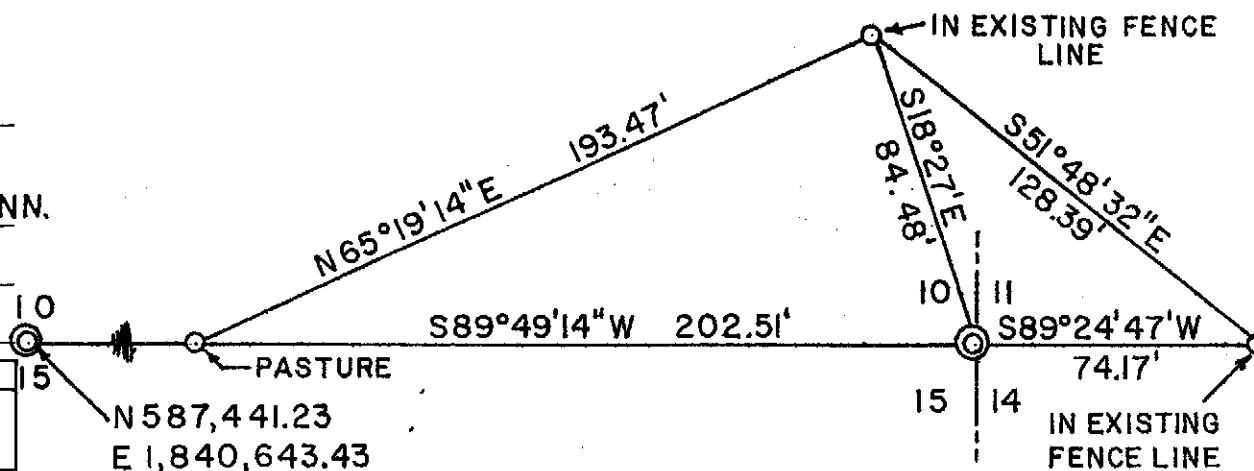


Drawing of corner and witness monuments, references and accessories used to perpetuate corner location: SECTION CORNER, 3" BRASS MARKER SET IN 8" X 18" CONCRETE CYLINDER. 1/4 CORNER, 1" X 30" I.P. WITH STAMPED ALUMINUM CAP, ALL OTHER MTS. ARE 1" X 30" 1.13/ LBS. L. F. IRON PIPES.

Joseph S. Murphy s. _____

Witness to corner location:

JAMES WALDOW LACRESCENT, MINN.



SECTION 10
T. 13 N. - R. 2 E-W.
WISCONSIN

WISCONSIN COORDINATE SYSTEM	
North	537,428.2
East	1,843,266.49
Elevation	Theta Angle
Vertical control order	
Horizontal control order	

Date of Survey 8-18-75

Scale 1" = 50'

Drafted by JSM

Date 9-3-75

21A

REGISTRY OFFICE }
L.C.O., VIC. }
Rec'd for Record this 14 day of Nov
1975 at Lacrosse Wis.
and Recorded in Vol. 105-11-11-44
Page 44
Waldow
Register of Deeds
105-11-11-44

Whitcomb Printing Co., Whitehall, Wis. 54773