

RECEIVED  
 MAR 3 2004  
 BY: *G. Jasperson*

## VERNON COUNTY CERTIFIED U.S. PUBLIC LAND SURVEY MONUMENT RECORD

INSTRUCTIONS: THIS RECORD SHALL SHOW THE LOCATION OF THE CORNER AND SHALL INCLUDE ALL OF THE FOLLOWING ELEMENTS (A-I)

(A) IDENTIFY THE CORNER BY REFERENCE TO THE U.S. PUBLIC LAND SURVEY SYSTEM

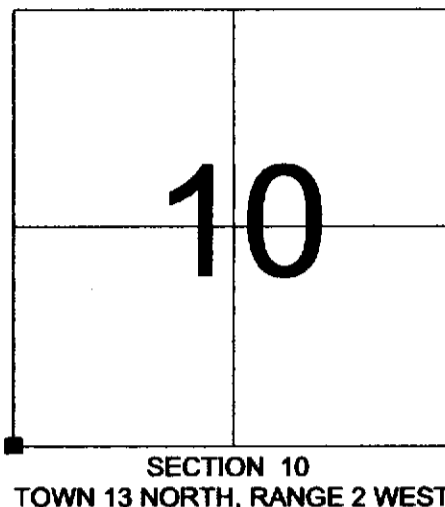
■ = CORNER MONUMENT RESTORED

WITNESSES TO CORNER LOCATION:

- 1) Robert M. Lampman
- 2) Jessica A. Zamor

VERNON COUNTY COORDINATES - NAD83(1991) - SURVEY FEET

NORTHING: 168797.527  
 EASTING: 775442.169

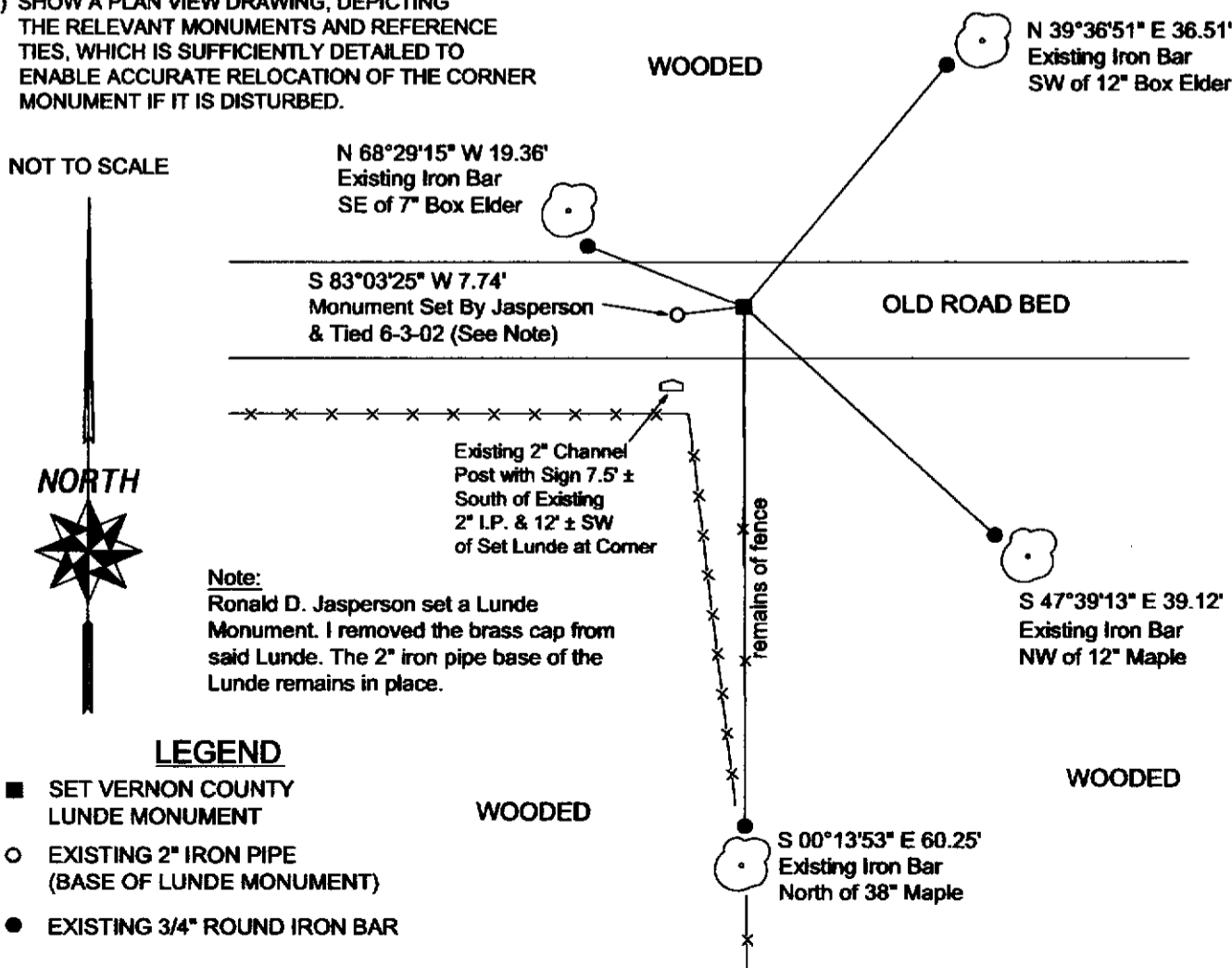


(B) DESCRIBE ANY RECORD EVIDENCE, MONUMENT EVIDENCE, OCCUPATIONAL EVIDENCE, TESTIMONIAL EVIDENCE OR ANY OTHER MATERIAL EVIDENCE YOU CONSIDERED, AND WHETHER THE MONUMENT WAS FOUND OR PLACED.

I was contacted on February 20th, 2004 by the Right-of-Way Department at Dairyland Power Cooperative. Agents there were having problems plotting legal descriptions of a roadway easement in Sections 9 and 10. The legal descriptions were based on a survey that I prepared in December of 1985. As a basis for plotting, the agents were attempting to utilize Vernon County Coordinates for the SW and S 1/4 corners of Section 10 as established by Ronald D. Jasperson. Said coordinate values being recorded on tie sheets prepared by Jasperson in June of 2002. In reviewing the record information and attempting to uncover the source of the problem, I noticed that the Southwest corner of Section 10 had been reestablished by Jasperson in June of 2002. In 1985, I found an existing 2" iron pipe with a brass cap at said section corner. Said monument being an Army Corps monument of record. The tie sheet prepared by Jasperson in 2002 indicated that the Army Corps monument was found destroyed, its location was reestablished and a Lunde monument was set. Jasperson's  
 (continued on reverse)

(C) IN THE PLAN VIEW DRAWING BELOW, PROVIDE REFERENCE TIES TO AT LEAST 4 WITNESS MONUMENTS OR, IF THE LOCATION IS WITHIN A MUNICIPALITY, TO AT LEAST 2 WITNESS MONUMENTS. (WITNESS MONUMENTS SHALL BE MADE OF CONCRETE, NATURAL STONE, IRON, OR OTHER EQUALLY DURABLE MATERIAL.) DESCRIBE WITNESS MONUMENTS.

(D) SHOW A PLAN VIEW DRAWING, DEPICTING THE RELEVANT MONUMENTS AND REFERENCE TIES, WHICH IS SUFFICIENTLY DETAILED TO ENABLE ACCURATE RELOCATION OF THE CORNER MONUMENT IF IT IS DISTURBED.



(E) DESCRIBE ANY MATERIAL DISCREPANCY BETWEEN THE LOCATION OF THE CORNER AS RESTORED OR REESTABLISHED AND THE LOCATION OF THAT CORNER AS PREVIOUSLY RESTORED OR REESTABLISHED BY DISTANCE AND DIRECTION. SHOW THE DISCREPANCY ON THE PLAN VIEW DRAWING UNDER (D), ABOVE. SHOW THE DISTANCES BETWEEN THE CORNER AS PREVIOUSLY RESTORED OR REESTABLISHED AND (1) THE CORNER AS RESTORED OR REESTABLISHED, AND (2) TO AT LEAST 2 OF THE WITNESS MONUMENTS AS SHOWN ON THE DRAWING IN (D), ABOVE.

The corner location as reestablished hereon disagrees with a location determined by Ronald D. Jasperson as per tie sheet prepared by Ronald D. Jasperson and dated June 3, 2002. The amount of the discrepancy is 7.74 feet. The discrepancy is depicted in the sketch on the reverse side of this sheet. The reason for the discrepancy is fully described under section (B) of this form.

(F) WAS THE CORNER RESTORED THROUGH ACCEPTANCE OF (1) AN OBLITERATED EVIDENCE LOCATION, OR (2) A FOUND PERPETUATED LOCATION?

(2) A FOUND PERPETUATED LOCATION - The location of the formerly existing ACOE monument at this corner being perpetuated by ties to an existing record survey prepared by me. Said survey being dated December 13, 1985. The location of the formerly existing ACOE monument was also found to be perpetuated by information in the field notes from the ACOE survey as well as field notes from my 1985 survey.

(G & H) WAS THE CORNER REESTABLISHED THROUGH LOST CORNER PROPORTIONATE METHODS? IF SO SHOW THE METHOD, INCLUDING THE DIRECTIONS AND DISTANCES TO OTHER PUBLIC LAND SURVEY CORNERS USED AS EVIDENCE OR USED FOR PROPORTIONING IN DETERMINING THE CORNER LOCATION.

N/A

(\*\*) ANY ADDITIONAL INFORMATION RELATED TO CORNER LOCATION

SECTION (B) CONTINUED FROM REVERSE

tie sheet for the South one-quarter corner of Section 10 called for the same aluminum capped monument that I had recovered in 1985. As both of Jasperson's tie sheets included Vernon County Coordinates, I was able to determine that the distance Jasperson had measured between the SW and S 1/4 corners of Section 10 was 2643.60 feet. I had previously recorded this same distance as 2635.49 feet. I then compared the location sketch on Jasperson's tie sheet for the SW corner of Section 10 with the location sketch on the Army Corps horizontal control station form. Jasperson's sketch shows his reestablished location being in line with a section of fence that runs northwesterly from a maple tree. Said maple tree was also utilized as a witness by the Army Corps. The Army Corps control station form shows the corner monument being in line with fence running south from said maple and easterly of the fence running Northwesterly from the maple. The discrepancy in the depiction of the occupational evidence together with the discrepancy in distance to the S 1/4 corner of Section 10 caused me to question Jasperson's reestablishment of the location of the Army Corps monument. I visited the site on February 24th, 2002 and utilized existing iron bar monuments from my 1985 survey together with control from said survey to reestablish the position of the Army Corps monument as I had found it in 1985. The resulting position lined up with occupational evidence running South from the maple tree. The position was also found to measure a slope distance of approximately 64.75 feet from the face of said maple. The Army Corps recorded a slope distance of 64.72 feet to a nail set in the face of the tree. The resulting position was also found to measure 2635.76 feet from the existing aluminum cap monument at the South one-quarter corner of Section 10. (My previously recorded measurement being 2635.49 feet.) I accepted the position as reestablished from iron bar monuments from my survey and set a Lunde monument at the corner. The discrepancy with the monument established by Jasperson being 7.74 feet. Said discrepancy is depicted in the location sketch on the front side this sheet. I removed the brass cap from the Lunde set by Jasperson and left the 2" iron pipe base of Jasperson's Lunde in place.

CORNER HISTORY:

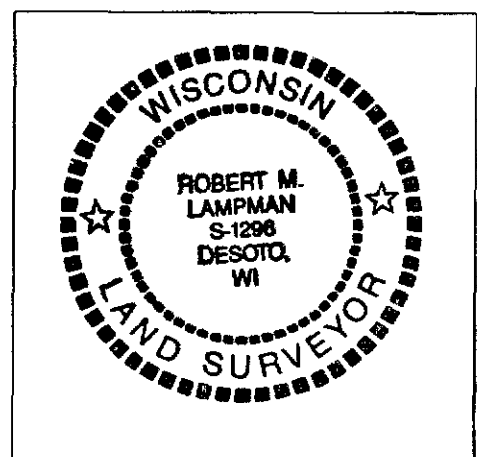
- Original government corner location established by A.L. Brown in 1846.
- U.S. Army Corps of Engineers reestablished the corner location by witness testimony in 1965. As per field notes from U.S. Army Corps of Engineers survey the witness testimony referenced the location of both a county surveyor's rod and an original government witness tree. The Army Corps monumented the corner location by setting a 2" iron pipe with a brass cap.
- I found the brass capped 2" iron pipe set by the Army Corps of Engineers in 1985. I utilized the found monument as part of a survey I prepared for Woodland Farms Real Estate Company dated December 13, 1985.
- Ronald D. Jasperson "found destroyed army corps brass cap monument". Jasperson attempted to reestablished the position of the destroyed monument. Jasperson set a Vernon County Lunde monument at the position that he determined. Jasperson's tie sheet is dated June 3, 2002.
- I found Jasperson's retracement of the former monument position to be in error. I retraced the position of the monument utilizing information from my 1985 survey. On February 25th, 2004 I set a Lunde monument at the position that I determined. I removed the cap from the Lunde set by Jasperson and left the 2" iron pipe base of Jasperson's monument in place.

AFFIX LAND SURVEYOR SEAL

(I) I, ROBERT M. LAMPMAN, CERTIFY THAT THE LOCATION SHOWN ON THIS RECORD WAS DETERMINED BY ME OR UNDER MY DIRECTION AND CONTROL AND THAT THIS U.S. PUBLIC LAND SURVEY MONUMENT RECORD IS CORRECT AND COMPLETE TO THE BEST OF MY KNOWLEDGE AND BELIEF.

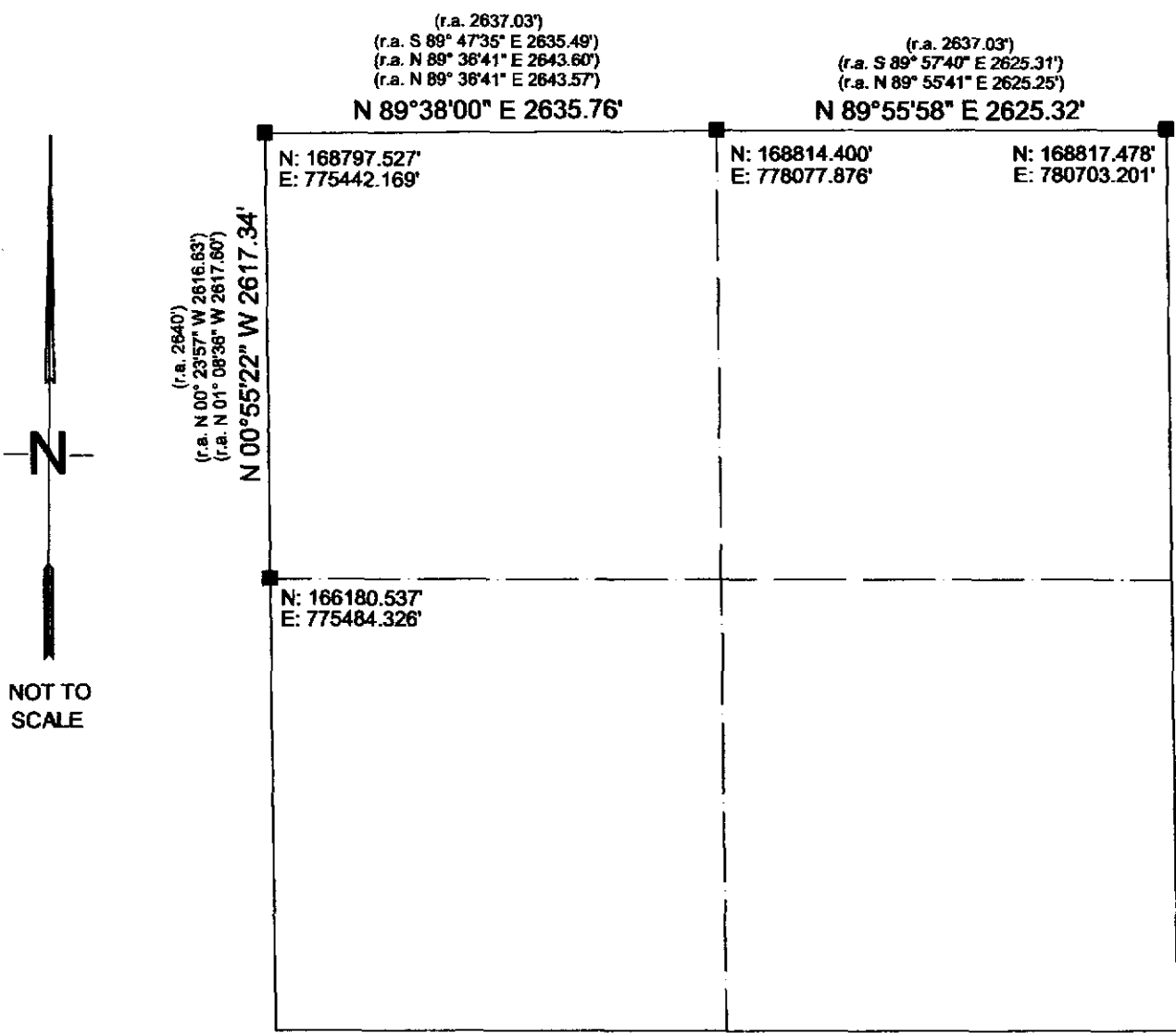
  
SIGNATURE

2-28-04  
DATE




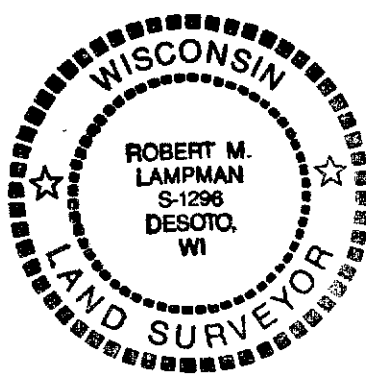
RECEIVED  
 MAR 3 2004  
 BY: *G. Jacobson*

VERNON COUNTY SECTION DATA SHEET  
 SECTION 15, TOWN 13 NORTH, RANGE 2 WEST



NOT TO SCALE

Bearings are referenced to Grid North, Vernon County Coordinate System.

		CORNER	Type of Corner Monument / Comments
 Surveyor's Signature		W 1/4 Corner	EXISTING 2" IRON PIPE W/ BRASS CAP
		NW Corner	LUNDE MONUMENT SET BY LAMPMAN 2-25-04
Date: <i>2-28-04</i> Surveyor's Seal		N 1/4 Corner	EXISTING IRON PIPE W/ 2" ALUMINUM CAP
		NE Corner	EXISTING BRASS CAPPED MONUMENT
			

**RECEIVED**  
 JUN 11 2002  
 BY: *[Signature]*

**VERNON COUNTY  
 CERTIFIED U.S. PUBLIC LAND SURVEY MONUMENT RECORD**

INSTRUCTIONS: THIS RECORD SHALL SHOW THE LOCATION OF THE CORNER AND SHALL INCLUDE ALL OF THE FOLLOWING ELEMENTS (A-I)

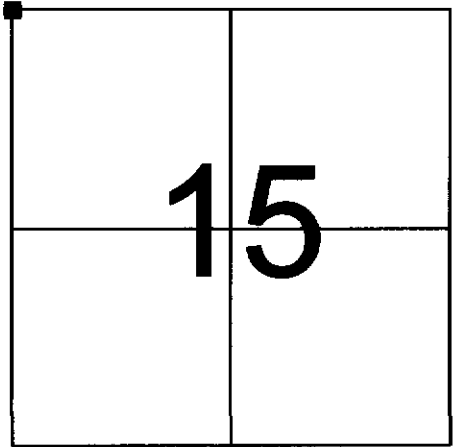
(A) IDENTIFY THE CORNER BY REFERENCE TO THE U.S. PUBLIC LAND SURVEY SYSTEM

■ = CORNER MONUMENT RESTORED

WITNESSES TO CORNER LOCATION:

- 1) RONALD D. JASPERSON
- 2) JASON L. CANCE

VERNON COUNTY COORDINATES  
 NORTHING: 168,796.47  
 EASTING: 775,434.49



SECTION 15, TOWN 13 NORTH, RANGE 2 WEST

(B) DESCRIBE ANY RECORD EVIDENCE, MONUMENT EVIDENCE, OCCUPATIONAL EVIDENCE, TESTIMONIAL EVIDENCE OR ANY OTHER MATERIAL EVIDENCE YOU CONSIDERED, AND WHETHER THE MONUMENT WAS FOUND OR PLACED.

FOUND DESTROYED ARMY CORPS BRASS CAP MONUMENT SET ON AUGUST 30, 1965, BY ARMY CORPS. RESET CORNER BASED ON FOUND TIES SET BY THE ARMY CORPS AND OTHER FIELD EVIDENCE THAT WAS REFERED TO IN THE FIELD NOTES.

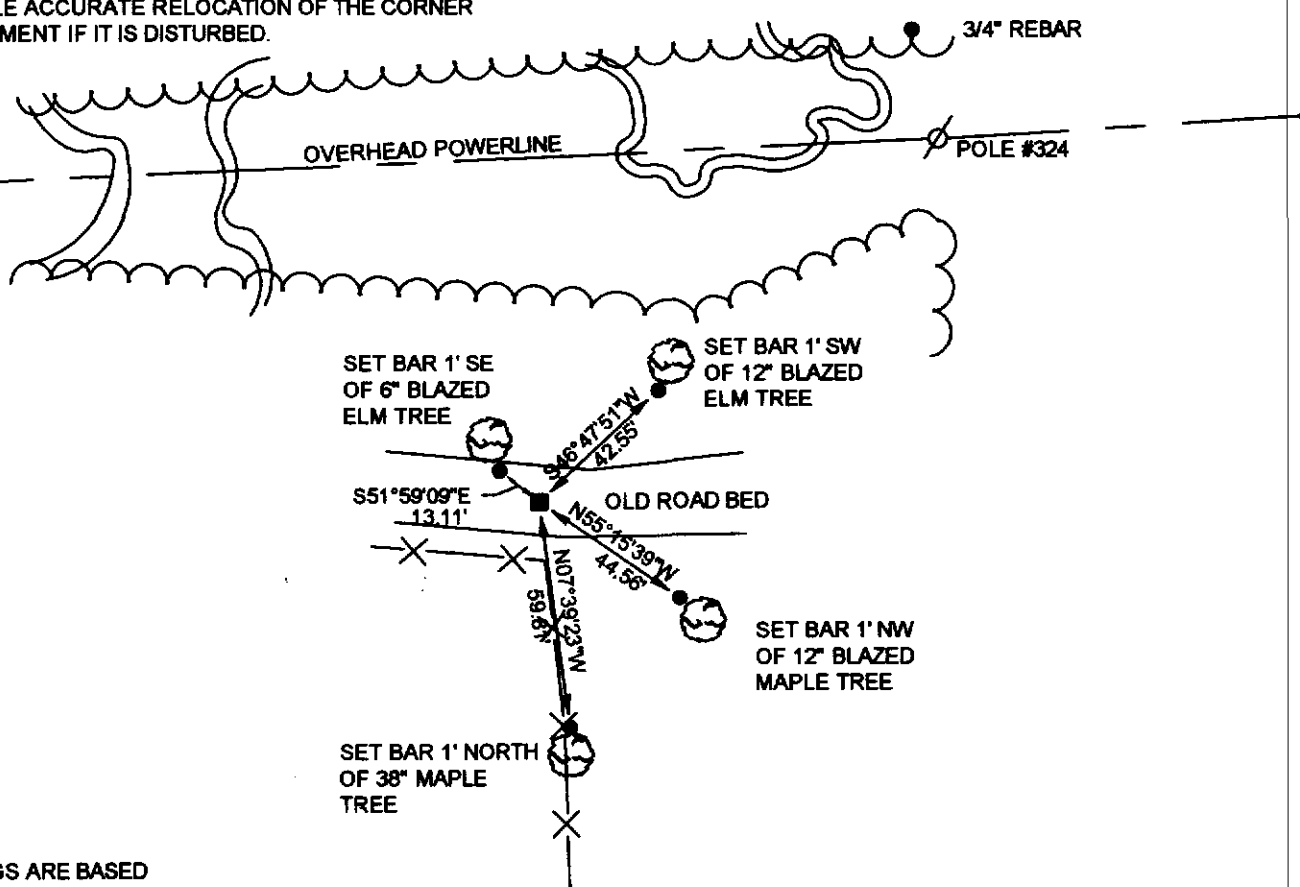
(C) IN THE PLAN VIEW DRAWING BELOW, PROVIDE REFERENCE TIES TO AT LEAST 4 WITNESS MONUMENTS OR, IF THE LOCATION IS WITHIN A MUNICIPALITY, TO AT LEAST 2 WITNESS MONUMENTS. (WITNESS MONUMENTS SHALL BE MADE OF CONCRETE, NATURAL STONE, IRON, OR OTHER EQUALLY DURABLE MATERIAL.) DESCRIBE WITNESS MONUMENTS.

(D) SHOW A PLAN VIEW DRAWING, DEPICTING THE RELEVANT MONUMENTS AND REFERENCE TIES, WHICH IS SUFFICIENTLY DETAILED TO ENABLE ACCURATE RELOCATION OF THE CORNER MONUMENT IF IT IS DISTURBED.

**LEGEND**

■ LUNDE MONUMENT

● 3/4" REBAR



BEARINGS ARE BASED ON THE VERNON COUNTY COORDINATE SYSTEM

(E) DESCRIBE ANY MATERIAL DISCREPANCY BETWEEN THE LOCATION OF THE CORNER AS RESTORED OR REESTABLISHED AND THE LOCATION OF THAT CORNER AS PREVIOUSLY RESTORED OR REESTABLISHED BY DISTANCE AND DIRECTION. SHOW THE DISCREPANCY ON THE PLAN VIEW DRAWING UNDER (D), ABOVE. SHOW THE DISTANCES BETWEEN THE CORNER AS PREVIOUSLY RESTORED OR REESTABLISHED AND (1) THE CORNER AS RESTORED OR REESTABLISHED, AND (2) TO AT LEAST 2 OF THE WITNESS MONUMENTS AS SHOWN ON THE DRAWING IN (D), ABOVE.

N/A

(F) WAS THE CORNER RESTORED THROUGH ACCEPTANCE OF (1) AN OBLITERATED EVIDENCE LOCATION, OR (2) A FOUND PERPETUATED LOCATION?

N/A

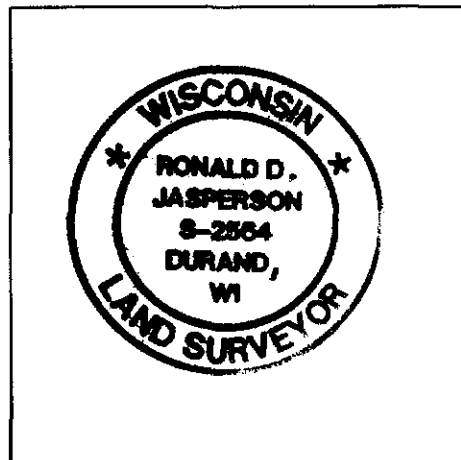
(G & H) WAS THE CORNER REESTABLISHED THROUGH LOST CORNER PROPORTIONATE METHODS? IF SO SHOW THE METHOD, INCLUDING THE DIRECTIONS AND DISTANCES TO OTHER PUBLIC LAND SURVEY CORNERS USED AS EVIDENCE OR USED FOR PROPORTIONING IN DETERMINING THE CORNER LOCATION.

N/A

AFFIX LAND SURVEYOR SEAL

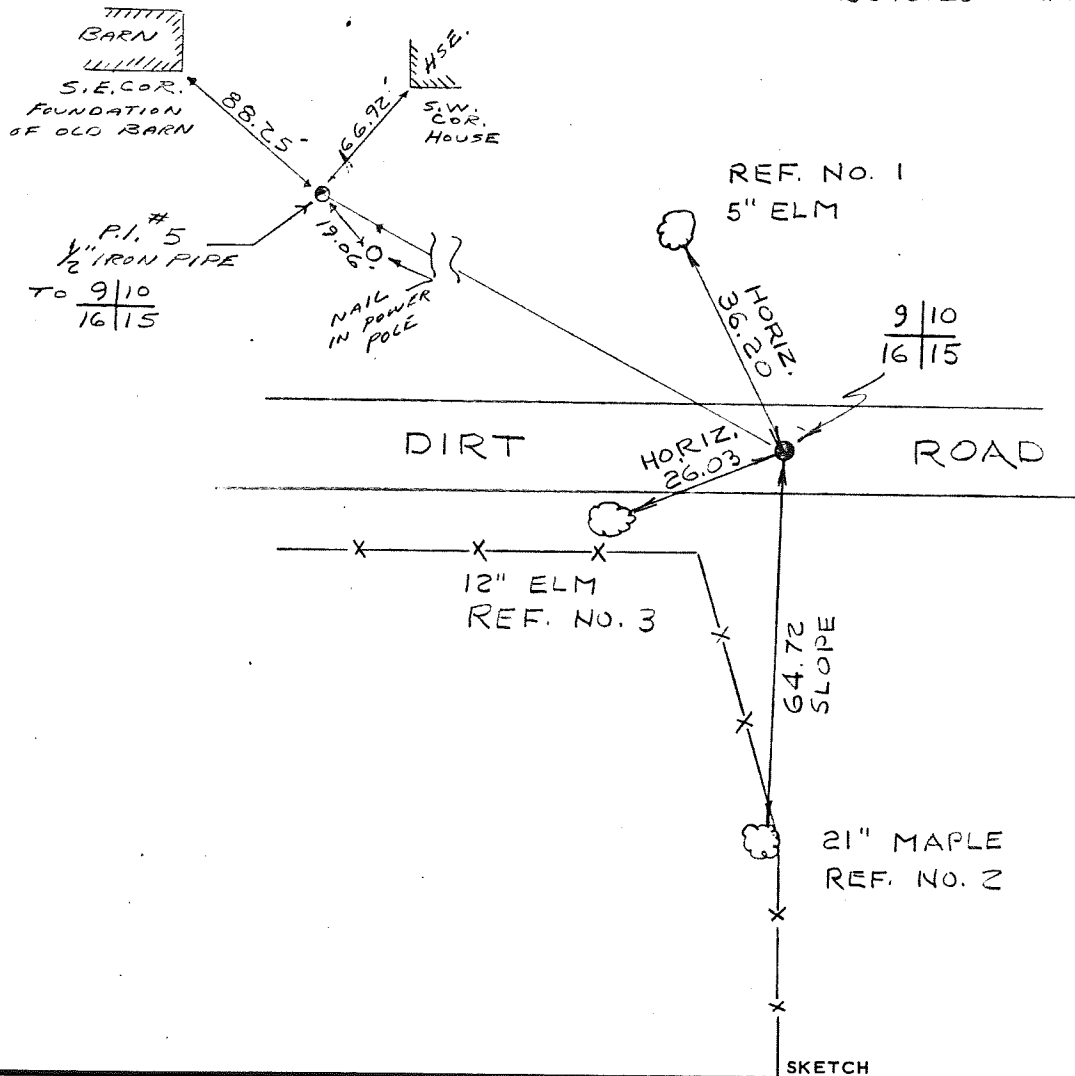
(I) I, RONALD D. JASPERSON, CERTIFY THAT THE LOCATION SHOWN ON THIS RECORD WAS DETERMINED BY ME OR UNDER MY DIRECTION AND CONTROL AND THAT THIS U.S. PUBLIC LAND SURVEY MONUMENT RECORD IS CORRECT AND COMPLETE TO THE BEST OF MY KNOWLEDGE AND BELIEF.

*Ronald D. Jaspers* 6-3-02  
SIGNATURE DATE



COUNTRY U. S. A.		TYPE OF MARK 2" IRON PIPE WITH BRASS CAP		STATION SECTION CORNER		9110 T. 13 N. 16115 R. 2 W.	
LOCALITY LA FARGE, WIS.		STAMPING ON MARK 9110 16115		AGENCY (CAST IN MARKS) CORPS OF ENGRS.		ELEVATION (FT) (M)	
LATITUDE		LONGITUDE		DATUM		DATUM	
(NORTHING)(EASTING) (FT) 587,454.23 (M)		(EASTING)(NORTHING) (FT) 1,838,007.62 (M)		GRID AND ZONE WIS. (SOUTH)		ESTABLISHED BY (AGENCY) CHICAGO DISTRICT	
(NORTHING)(EASTING) (FT) 587,657.81 (M)		(EASTING)(NORTHING) (FT) 1,937,670.59 (M)		GRID AND ZONE		DATE 1965	ORDER
TO OBTAIN				GRID AZIMUTH, ADD		TO THE GEODETIC AZIMUTH	
TO OBTAIN				GRID AZ. (ADD)(SUB.)		TO THE GEODETIC AZIMUTH	
OBJECT		AZIMUTH OR DIRECTION (GEODETIC)(GRID) (MAGNETIC)		BACK AZIMUTH		GEOD. DISTANCE (METERS) (FEET)	
						GRID DISTANCE (METERS) (FEET)	
P. I. No. 5		N. 60°-59'-04" W				419.71	
REF. No. 1		N. 25°-40'-34" W				36.20	
REF. No. 2		S. 00°-08'-36" W				(SLOPE) 64.72	
REF. No. 3		S. 68°-06'-36" W				26.03	

DISTANCES ARE TO NAILS IN TREES. TREES ARE BLAZED & SCRIBED T. PIPE IS BURIED APPROX. 0.5'



DA FORM 1959  
1 OCT 64

REPLACES DA FORMS 1959 AND 1960, 1 FEB 57, WHICH ARE OBSOLETE.

DESCRIPTION OR RECOVERY OF HORIZONTAL CONTROL STATION  
(TM 5-237)