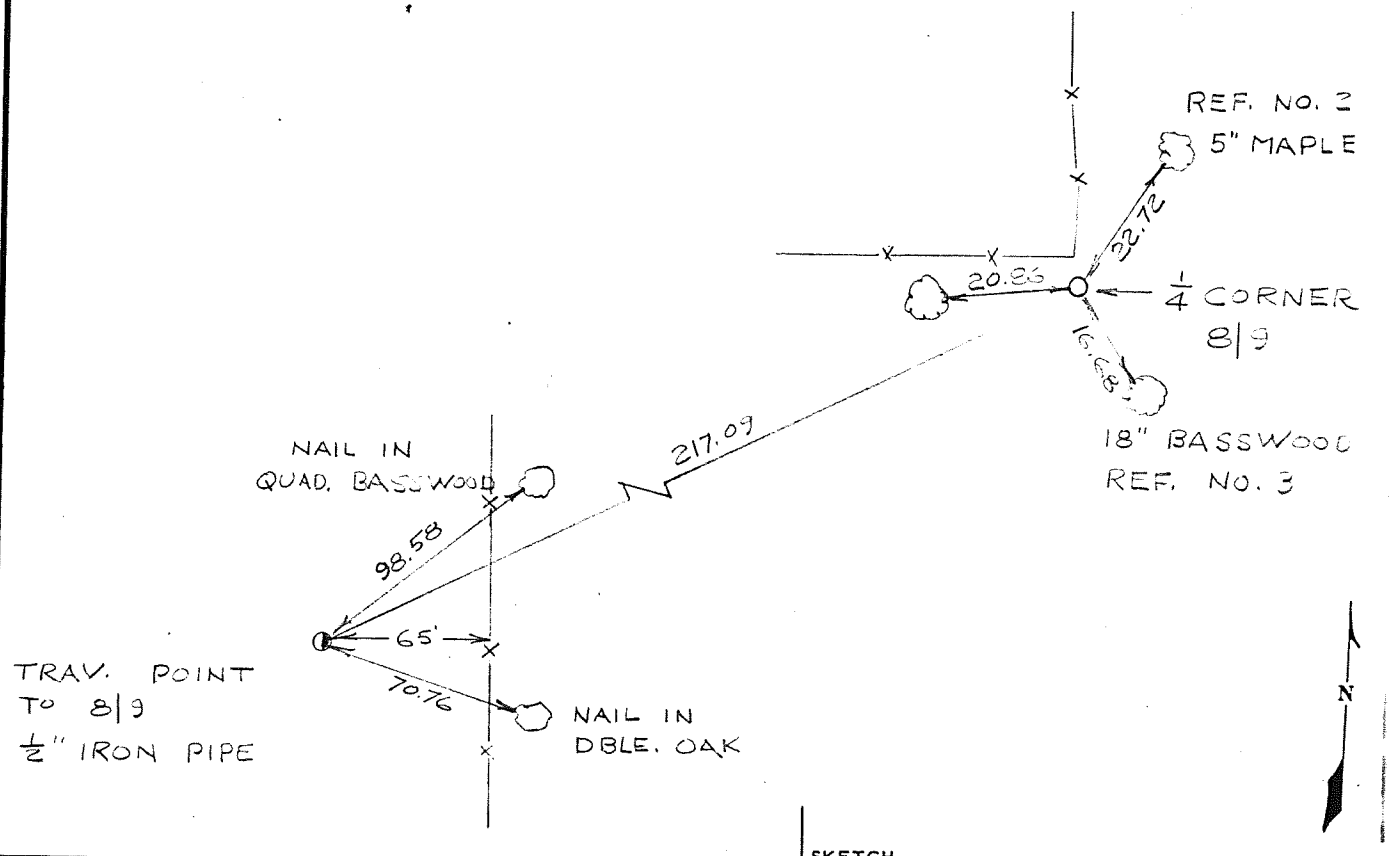


COUNTRY U. S. A.		TYPE OF MARK 1" IRON PIPE WITH BRASS CAP		STATION 1/4 CORNER 8/9		T. 13 N. R. 2 W.	
LOCALITY LA FARGE, WIS.		STAMPING ON MARK 8/9		AGENCY (CAST IN MARKS) CORPS OF ENGRS.		ELEVATION (FT) (M)	
LATITUDE		LONGITUDE		DATUM		DATUM	
(NORTHING)(EASTING) (FT) (M)	(EASTING)(NORTHING) (FT) (M)	GRID AND ZONE WIS. (SOUTH)		ESTABLISHED BY (AGENCY) CHICAGO DISTRICT			
(NORTHING)(EASTING) (FT) (M)	(EASTING)(NORTHING) (FT) (M)	GRID AND ZONE		DATE 1965		ORDER	

TO OBTAIN GRID AZIMUTH, ADD TO THE GEODETIC AZIMUTH-
TO OBTAIN GRID AZ. (ADD)(SUB.) TO THE GEODETIC AZIMUTH-

OBJECT	AZIMUTH OR DIRECTION		BACK AZIMUTH	GEOD. DISTANCE		GRID DISTANCE	
	(GEODETIC)	(GRID) (MAGNETIC)		(METERS)	(FEET)	(METERS)	(FEET)
TRAV. PT. TO 8/9	S. 57° 13' - 59" W.					217.09	
REF. NO. 1	S. 85° 35' - 39" W.					20.83	
REF. NO. 2	N. 33° 48' - 59" E					22.72	
REF. NO. 3	S. 30° - 38' - 01" E					16.68	

REFERENCE DISTANCES ARE HORIZONTAL & TO NAILS IN TREES. REFERENCE TREES TO 1/4 CORNER ARE BLAZED & SCRIBED T.



SKETCH