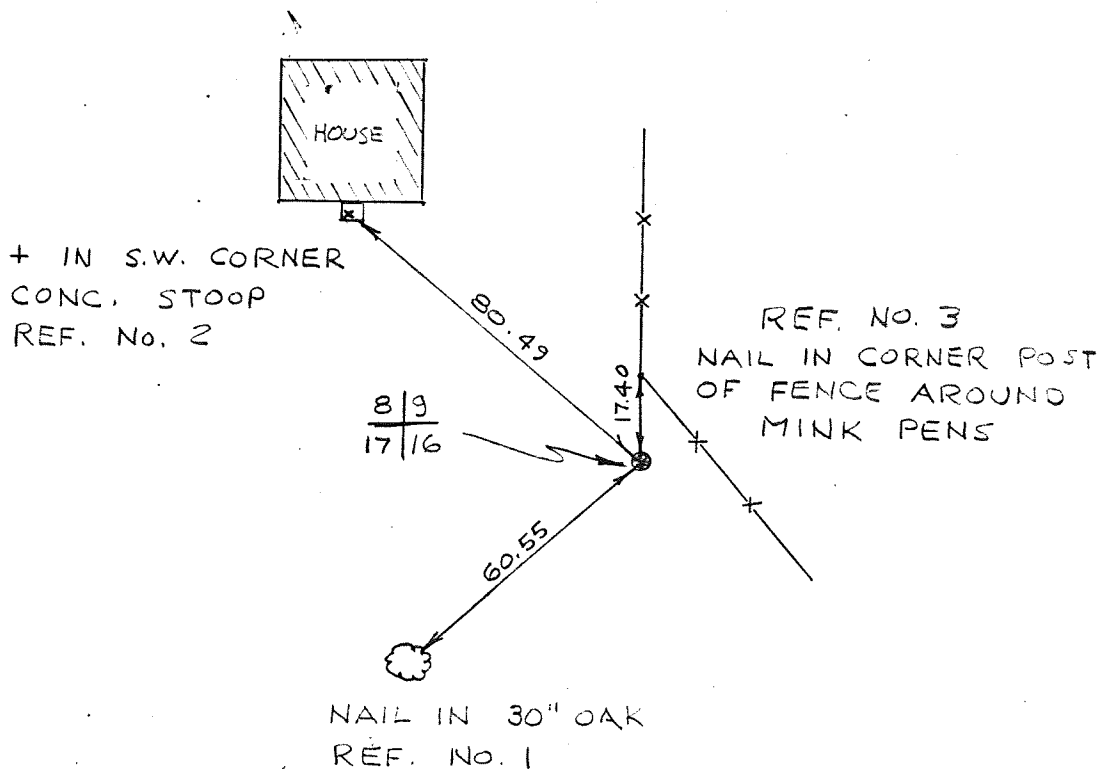


COUNTRY U. S. A.		TYPE OF MARK 2" IRON PIPE WITH BRASS CAP		STATION SECTION CORNER $\frac{8}{9}$ 1716 T. 13 N. R. 2 W.	
LOCALITY LA FARGE, WIS.		STAMPING ON MARK $\frac{8}{9}$ 1716		AGENCY (CAST IN MARKS) CORPS OF ENGRS.	
LATITUDE		LONGITUDE		DATUM	
(NORTHING)(EASTING) 587,559.38 (M)		(EASTING)(NORTHING) 1,832,726.75 (M)		GRID AND ZONE WIS. (SOUTH)	
(NORTHING)(EASTING) (M)		(EASTING)(NORTHING) (M)		GRID AND ZONE	
TO OBTAIN				TO THE GEODETIC AZIMUTH	
TO OBTAIN				TO THE GEODETIC AZIMUTH	
ESTABLISHED BY (AGENCY) CHICAGO DISTRICT		DATE 1965		ORDER	

OBJECT	AZIMUTH OR DIRECTION (GEODETIC)(GRID) (MAGNETIC)		BACK AZIMUTH	GEOD. DISTANCE (METERS) (FEET)		GRID DISTANCE (METERS) (FEET)	
	°	' "		°	' "	°	' "
HONEY	S. 73°	36' 03" W.					32 96.74
REF. No. 1	S. 48°	29' 40" W.					60.55
REF. No. 2	N. 50°	39' 23" W.					80.49
REF. No. 3	N. 00°	38' 37" E.					17.40

REFERENCE DISTANCES ARE HORIZONTAL.



SKETCH

US Army Corps of Engineers



Saint Paul District

PROJECT TITLE:

LaFarge, WI

COMPUTED BY:

*[Signature]*

DATE:

15 Feb 02

SHEET:

1 of 1

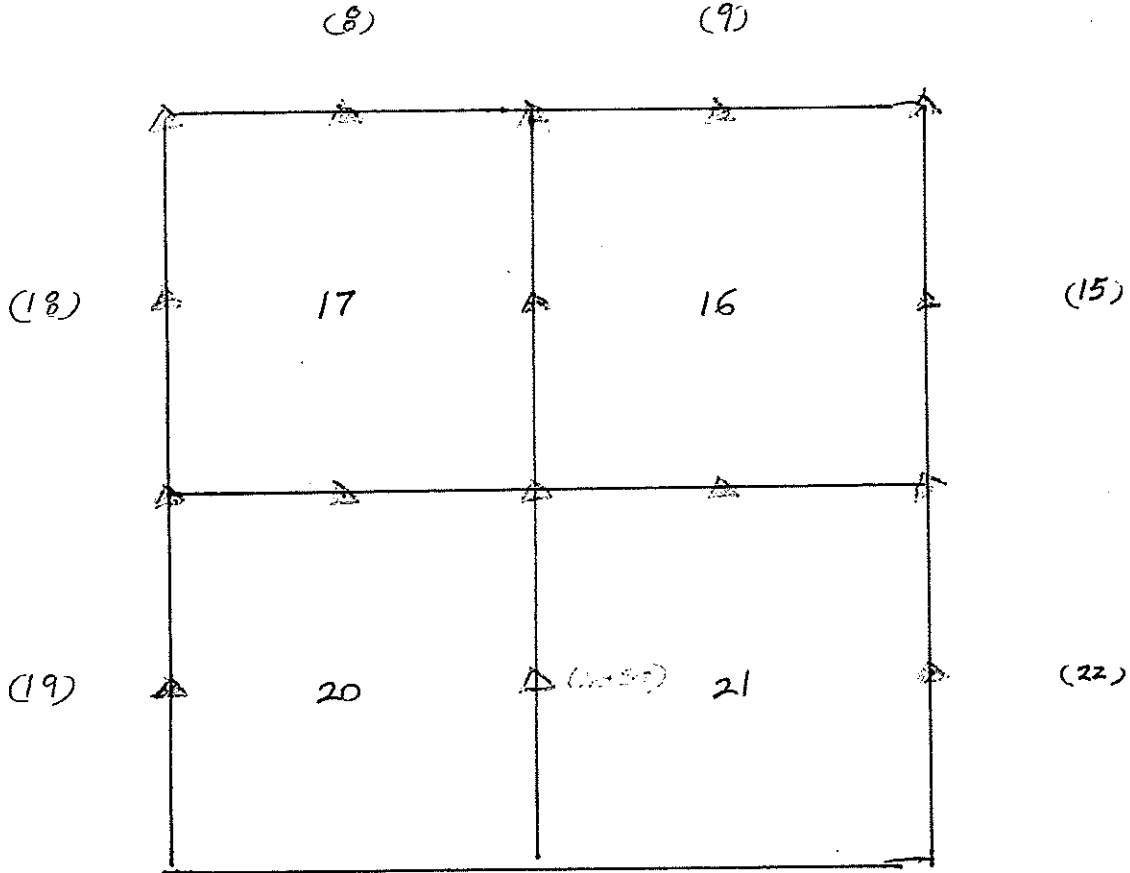
SUBJECT TITLE:

Land Lines T13N, R2W  $\frac{17}{20}$ / $\frac{16}{21}$

CHECKED BY:

DATE:

CONTRACT NO.:



*△ - See PD Pt 122A-213 for Contour Elevation*

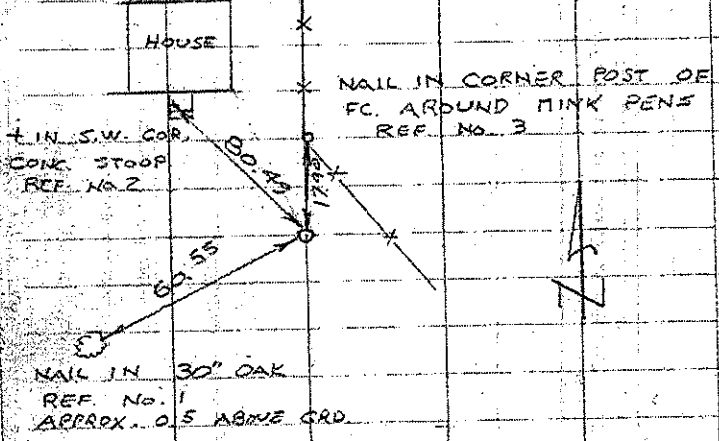
KICKAPOO RIVER  
LA FARGE, WIS.

6 NOV. 1965

PROPERTY SURVEY

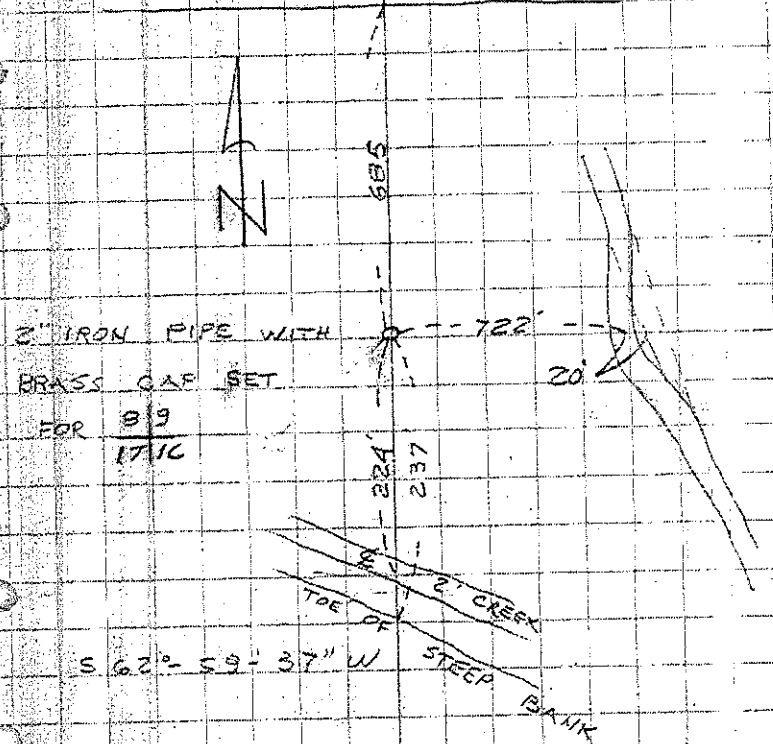
PK	B.S.	I.S.	∠ RT.	DIST.
	8/9	8/9		
	FOR 17/16	17/16		
	2" I.P. SET	POINT NEAR REF. NO. 1	165°-30'-20"	60.55
"	"	REF. NO. 2	246°-21'-00"	80.49
"	"	REF. NO. 3	297°-39'-00"	17.40

REFERENCES



REFERENCE DISTANCES ARE HORIZONTAL  
NAILS POINT AT CORNER. TREE IS  
BLAZED & SCRIBED  $\bar{B}$ .

KICKAPOO RIVER



CORNER SET AT POINT SHOWN US  
BY THE OWNER. IT CHECKS THE  
NATURAL MONUMENTS OF GOVERNMENT  
NOTES VERY GOOD.

819  
1116 GENERAL COMMENTS

1. Corner set at former location of old fence corner per testimony of owner.
2. This location fits very well with gov't calls to natural mon'ts:  
Meas 625' to S. edge Kickapoo - Gov't = 660'  
" 225' to S. edge 2' creek - Gov't = 233' to S. edge 3' Creek  
(top of steep bank on S. side creek is 234' S. of corner  
Meas 722' to W. edge of gully, but gully now has bow  
to West of about 20' (Gov't = 742' to W. edge)
3. This location gives fairly representative distances and bearings to the adjacent  $\frac{1}{4}$  corners.