

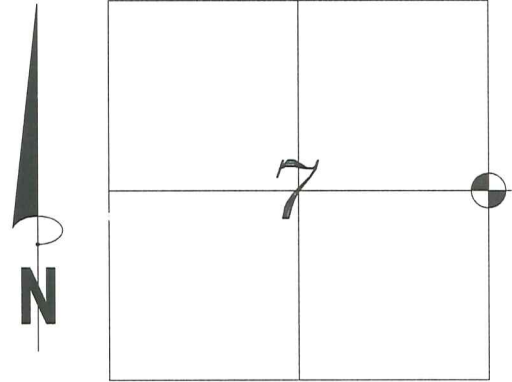
U.S. PUBLIC LAND SURVEY MONUMENT RECORD

Vernon County Coordinates:

North _____

East _____

CORNER:
EAST 1/4 CORNER
SECTION 07, T 13 N, R 2 W
VERNON COUNTY, WISCONSIN





History of original corner establishment and subsequent restorations and descriptions of any record. Monument, occupation, testimonial or other evidence considered.

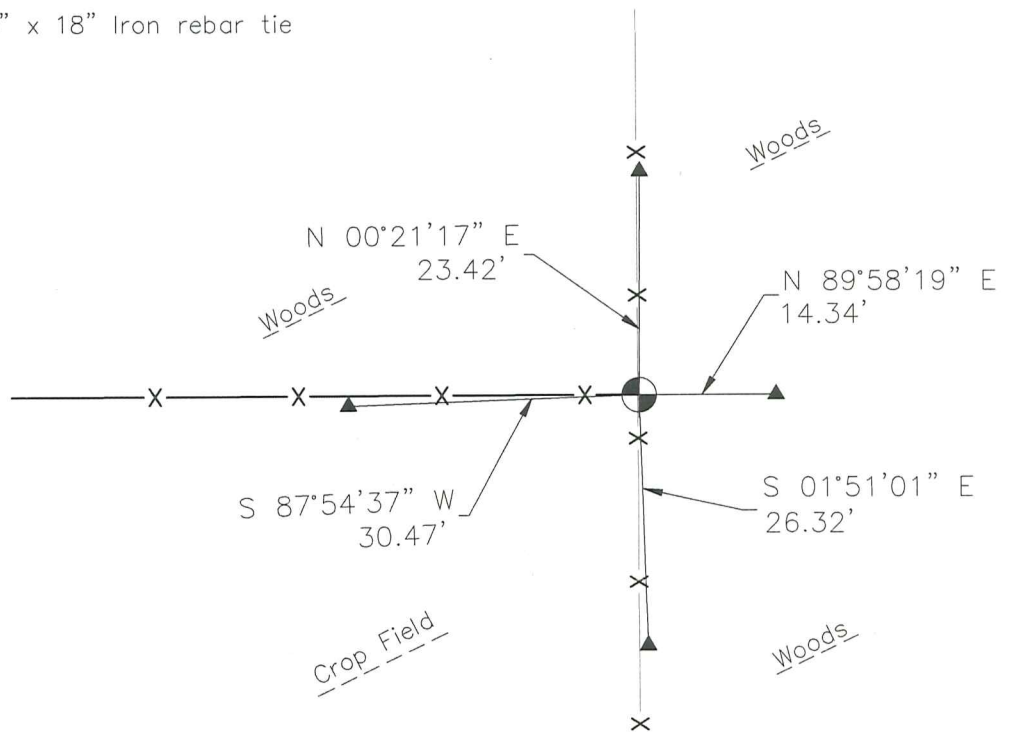
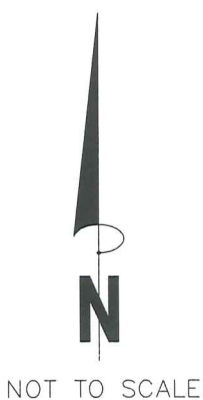
Record of evidence is the original Government survey dated January of 1846 by Alfred L. Brown. In a survey dated February 23, 1966 Ralph J. Van Dorpe set a 2" pipe with a U.S. Army Corps of Engineers Brass Cap Monument. Gary A. Zick found and used the said brass monument in a survey dated December 2, 2005. I found and accepted the brass cap U.S. Army Corps of Engineers Monument.

LEGEND

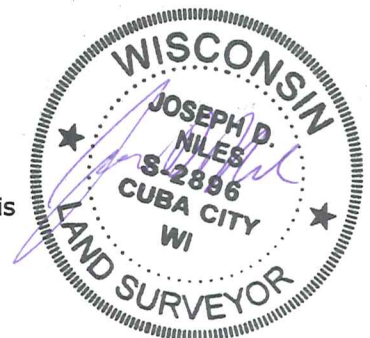
 = Found 3" Brass Cap U.S. Army Corps of Engineers Monument

 = Set 3/4" x 18" Iron rebar tie

 = Fence



I, Joseph D. Niles, Wisconsin Professional Land Surveyor, S-2896, certify that the corner location shown on this record was determined by me or under my direction and control and that this U.S. Public Land Survey Monument record is correct and complete to the best of my knowledge and belief.




Joseph D. Niles, S-2896
Professional Land Surveyor

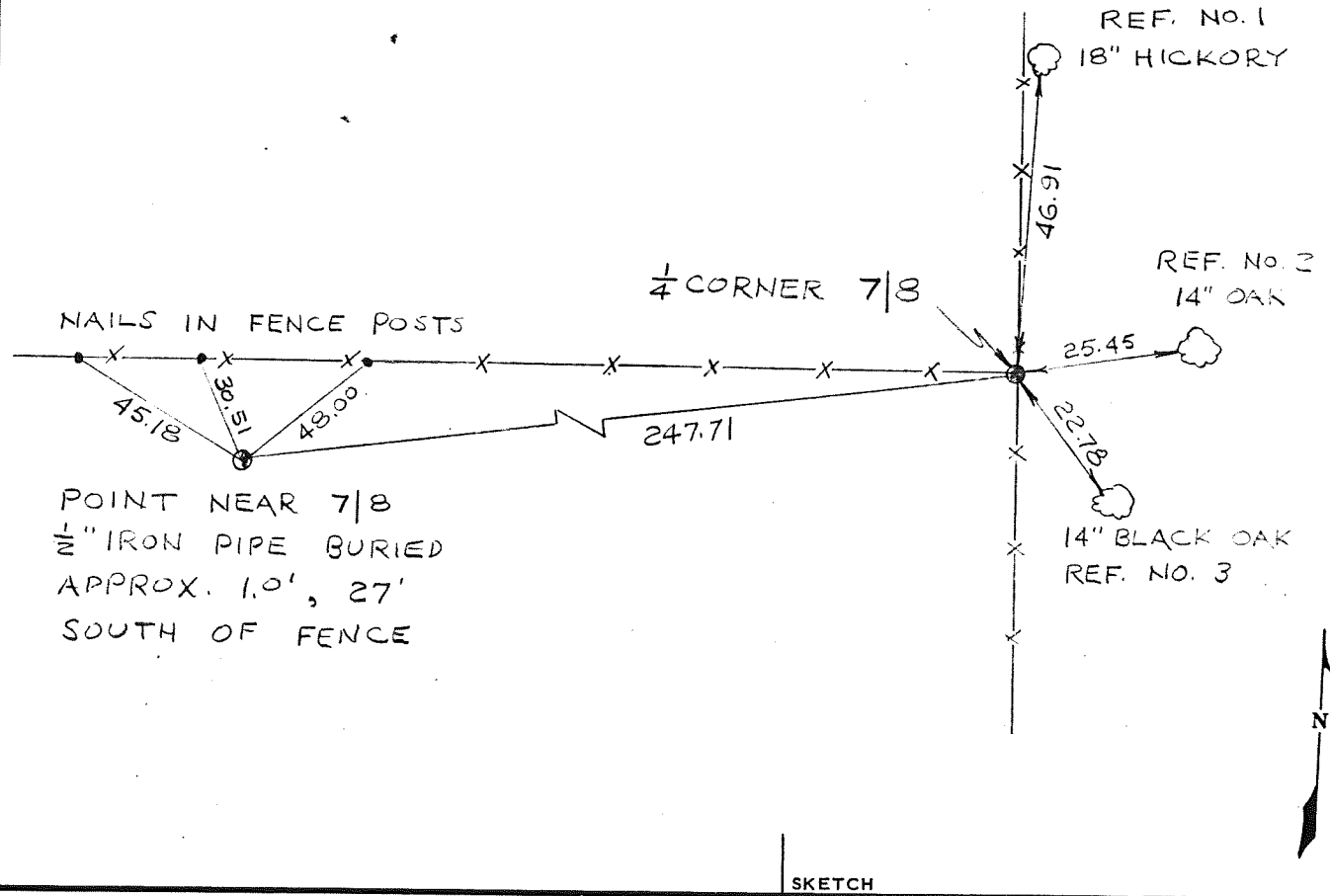
Date: 2-8-2019

COUNTRY U. S. A.		TYPE OF MARK 2" IRON PIPE WITH BRASS CAP		STATION 1/4 CORNER 7/8		T. 13 N. R. 2 W.	
LOCALITY LA FARGE, WIS.		STAMPING ON MARK 7/8		AGENCY (CAST IN MARKS) CORPS OF ENGRS.		ELEVATION (FT) (M)	
LATITUDE		LONGITUDE		DATUM		DATUM	
(NORTHING)(EASTING) (FT)	(EASTING)(NORTHING) (FT)	GRID AND ZONE		ESTABLISHED BY (AGENCY)			
590,228.68 (M)	1,827,482.31 (M)	WIS. (SOUTH)		CHICAGO DISTRICT			
(NORTHING)(EASTING) (FT)	(EASTING)(NORTHING) (FT)	GRID AND ZONE		DATE		ORDER	
				1965			

TO OBTAIN GRID AZIMUTH, ADD TO THE GEODETIC AZIMUTH
 TO OBTAIN GRID AZ. (ADD)(SUB.) TO THE GEODETIC AZIMUTH

OBJECT	AZIMUTH OR DIRECTION (GEODETIC)(GRID) (MAGNETIC)	BACK AZIMUTH	GEOD. DISTANCE (METERS) (FEET)	GRID DISTANCE (METERS) (FEET)
POINT NEAR 7/8	S. 84°-04'-31" W.			247.71
REF. No. 1	N. 03°-10'-31" E.			46.91
REF. No. 2	N. 81°-34'-31" E.			25.45
REF. No. 3	S. 36°-13'-29" E.			22.73

REFERENCE DISTANCES ARE HORIZONTAL.
 TREES ARE BLAZED & SCRIBED B.



SKETCH