

# VERNON COUNTY CERTIFIED U.S. PUBLIC LAND SURVEY MONUMENT RECORD

INSTRUCTIONS: THIS RECORD SHALL SHOW THE LOCATION OF THE CORNER AND SHALL INCLUDE ALL OF THE FOLLOWING ELEMENTS (A-I)

(A) IDENTIFY THE CORNER BY REFERENCE TO THE U.S. PUBLIC LAND SURVEY SYSTEM

■ = CORNER MONUMENT RESTORED

WITNESSES TO CORNER LOCATION:

- 1) Robert M. Lampman
- 2) Jessica A. Zamor

GEOGRAPHIC COORDINATES - WGS84/GRS80 - NAD83(CORS96)

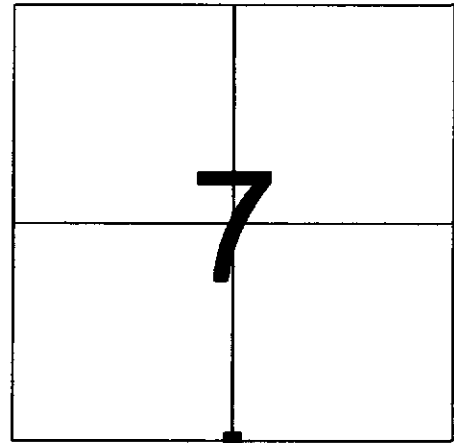
Lat: 43°36'36.97551" N

Lon: 90°39'40.95964" W

VERNON COUNTY COORDINATES - NAD83(CORS96) - SURVEY FEET

NORTHING: 168813.772

EASTING: 762302.427



**SECTION 7**  
**TOWN 13 NORTH, RANGE 2 WEST**

(B) DESCRIBE ANY RECORD EVIDENCE, MONUMENT EVIDENCE, OCCUPATIONAL EVIDENCE, TESTIMONIAL EVIDENCE OR ANY OTHER MATERIAL EVIDENCE YOU CONSIDERED, AND WHETHER THE MONUMENT WAS FOUND OR PLACED.

Found 3/4" iron rebar at approximate intersection of occupation lines running to the east and north. Accepted the rebar and said occupation as the best available evidence of the original government corner location. Believe the rebar to be that set by Terry Cornell in 1997. The found rebar matches well with recorded distances to other monuments from Cornell's survey.

North-south location of the monument is supported by record distance from W.H.Knowler's resurvey of Section 18 in 1887. Knowler recorded a distance of 2610.96 feet southerly to the Center of Section 18. Distance from this corner southerly to east-west one-quarter line of Section 18 is approximately 2609 feet. Distance southerly from this corner to an existing rebar found at the occupied center of Section 18 measures 2604.99 feet. (Continued On Reverse)

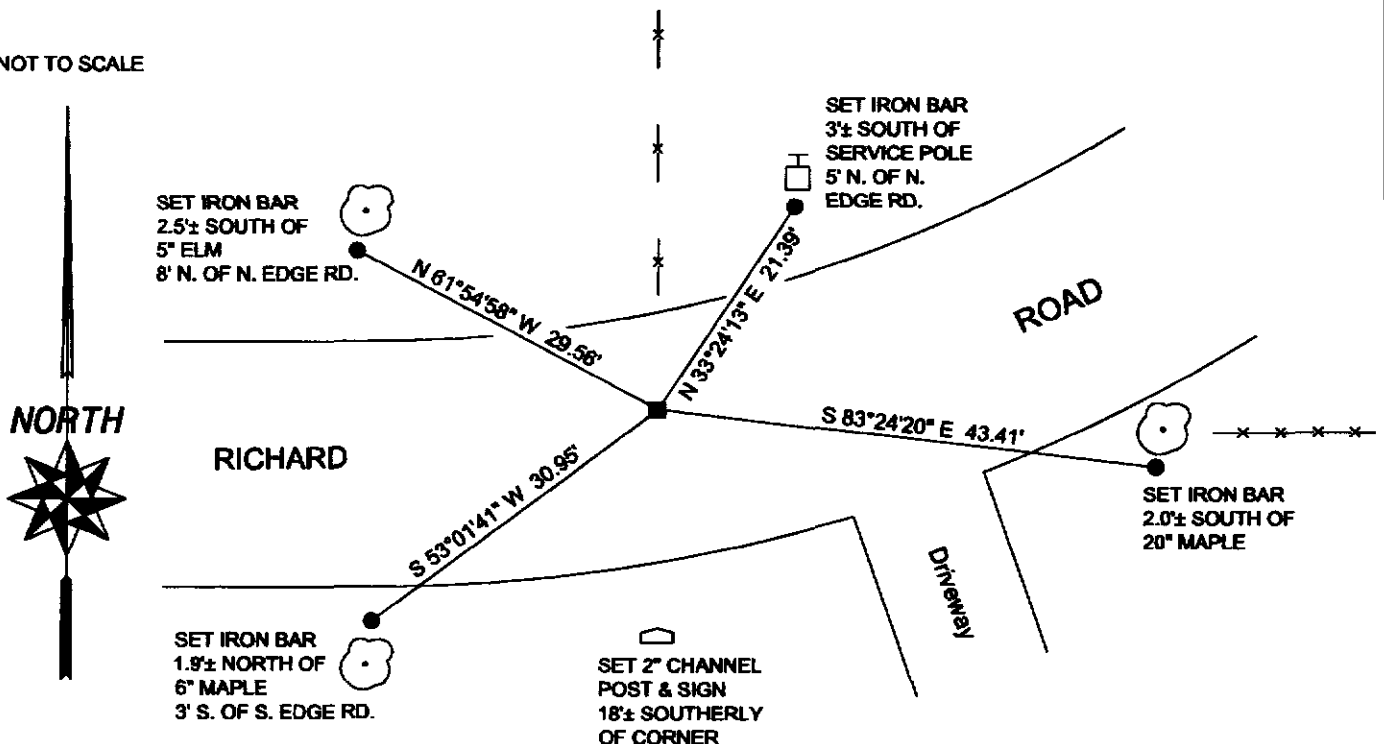
(C) IN THE PLAN VIEW DRAWING BELOW, PROVIDE REFERENCE TIES TO AT LEAST 4 WITNESS MONUMENTS OR, IF THE LOCATION IS WITHIN A MUNICIPALITY, TO AT LEAST 2 WITNESS MONUMENTS. (WITNESS MONUMENTS SHALL BE MADE OF CONCRETE, NATURAL STONE, IRON, OR OTHER EQUALLY DURABLE MATERIAL.) DESCRIBE WITNESS MONUMENTS.

(D) SHOW A PLAN VIEW DRAWING, DEPICTING THE RELEVANT MONUMENTS AND REFERENCE TIES, WHICH IS SUFFICIENTLY DETAILED TO ENABLE ACCURATE RELOCATION OF THE CORNER MONUMENT IF IT IS DISTURBED.

### LEGEND

- FOUND EXISTING 3/4" ROUND IRON REBAR 1 1/2" BELOW ROAD SURFACE
- SET 3/4" x 30" ROUND IRON BAR AS WITNESS MONUMENT

NOT TO SCALE



(E) DESCRIBE ANY MATERIAL DISCREPANCY BETWEEN THE LOCATION OF THE CORNER AS RESTORED OR REESTABLISHED AND THE LOCATION OF THAT CORNER AS PREVIOUSLY RESTORED OR REESTABLISHED BY DISTANCE AND DIRECTION. SHOW THE DISCREPANCY ON THE PLAN VIEW DRAWING UNDER (D), ABOVE. SHOW THE DISTANCES BETWEEN THE CORNER AS PREVIOUSLY RESTORED OR REESTABLISHED AND (1) THE CORNER AS RESTORED OR REESTABLISHED, AND (2) TO AT LEAST 2 OF THE WITNESS MONUMENTS AS SHOWN ON THE DRAWING IN (D), ABOVE.

N/A

(F) WAS THE CORNER RESTORED THROUGH ACCEPTANCE OF (1) AN OBLITERATED EVIDENCE LOCATION, OR (2) A FOUND PERPETUATED LOCATION?

(2) A FOUND PERPETUATED LOCATION

(G & H) WAS THE CORNER REESTABLISHED THROUGH LOST CORNER PROPORTIONATE METHODS? IF SO SHOW THE METHOD, INCLUDING THE DIRECTIONS AND DISTANCES TO OTHER PUBLIC LAND SURVEY CORNERS USED AS EVIDENCE OR USED FOR PROPORTIONING IN DETERMINING THE CORNER LOCATION.

N/A

(\*\*) ANY ADDITIONAL INFORMATION RELATED TO CORNER LOCATION

(B) DESCRIPTION OF EVIDENCE - CONTINUED FROM REVERSE

The east-west location of the found monument is supported by occupation along the North-South one-quarter line of Section 18. A line run from this corner to occupied South one-quarter corner of Section 18 passes approximately 2.5 feet west of the aforementioned iron rebar at the occupied Center of Section 18. The found monument is in line with occupation running north along the North-South one-quarter line of Section 7.

CORNER HISTORY:

-Original government corner location established by A.L. Brown in 1846.

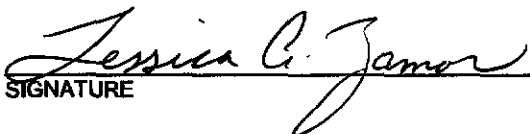
-W.H.Knower renewed the corner in 1887 as part of a subdivision of Section 18, T13N, R2W. Volume 1 of Resurveys, Number 400.

-Terry Cornell found a 5" iron spike at the corner in November of 1997 and replaced the spike with a 3/4" rebar. (Plat of Survey prepared for Myron Richard.)

-Gary A. Zick calls for a "set" 3/4 inch rebar at the corner in October of 2004 as part of a survey prepared for Jody Wirts.

AFFIX LAND SURVEYOR SEAL

(I) I, JESSICA A. ZAMOR, CERTIFY THAT THE LOCATION SHOWN ON THIS RECORD WAS DETERMINED BY ME OR UNDER MY DIRECTION AND CONTROL AND THAT THIS U.S. PUBLIC LAND SURVEY MONUMENT RECORD IS CORRECT AND COMPLETE TO THE BEST OF MY KNOWLEDGE AND BELIEF.

  
SIGNATURE

5-04-2005  
DATE

