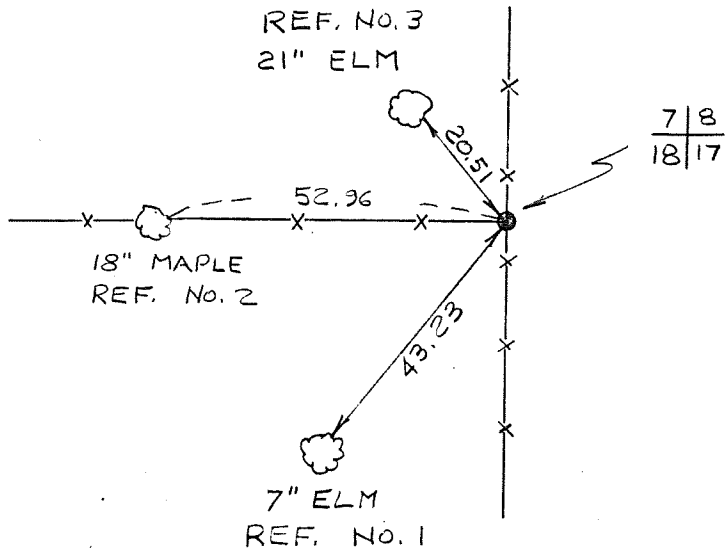


COUNTRY U. S. A.		TYPE OF MARK 2" IRON PIPE WITH BRASS CAP		STATION SECTION CORNER $\frac{7}{8}$ T. 13 N. 18/17 R. 2 W.	
LOCALITY LA FARGE, WIS.		STAMPING ON MARK $\frac{7}{8}$ 18/17		AGENCY (CAST IN MARKS) CORPS OF ENGRS.	
LATITUDE		LONGITUDE		ELEVATION (FT) (M)	
(NORTHING)(EASTING) (FT) 587,612.34 (M)		(EASTING)(NORTHING) (FT) 1,827,462.65 (M)		GRID AND ZONE WIS. (SOUTH)	
(NORTHING)(EASTING) (FT) (M)		(EASTING)(NORTHING) (FT) (M)		GRID AND ZONE DATE 1965 ORDER	

TO OBTAIN GRID AZIMUTH, ADD TO THE GEODETIC AZIMUTH
TO OBTAIN GRID AZ. (ADD)(SUB.) TO THE GEODETIC AZIMUTH

OBJECT	AZIMUTH OR DIRECTION (GEODETIC)(GRID) (MAGNETIC)	BACK AZIMUTH	GEOD. DISTANCE		GRID DISTANCE	
			(METERS)	(FEET)	(METERS)	(FEET)
HONEY	S. 64° 54' - 56" E				2320	32
REF. NO. 1	S. 38° 37' - 44" W				43.23	
REF. NO. 2	N. 88° 24' - 16" W				52.96	
REF. NO. 3	N. 40° 59' - 16" W				20.51	

REFERENCE DISTANCES ARE HORIZONTAL & TO NAILS IN TREES. TREES ARE BLAZED & SCRIBED B.



SKETCH

DA FORM 1959
1 OCT 64

REPLACES DA FORMS 1959 AND 1960, 1 FEB 57, WHICH ARE OBSOLETE.

DESCRIPTION OR RECOVERY OF HORIZONTAL CONTROL STATION
(TM 5-237)

US Army Corps of Engineers



Saint Paul District

PROJECT TITLE:

LaFarge, WI

COMPUTED BY:

[Signature]

DATE:

15 Feb 02

SHEET:

1 of 1

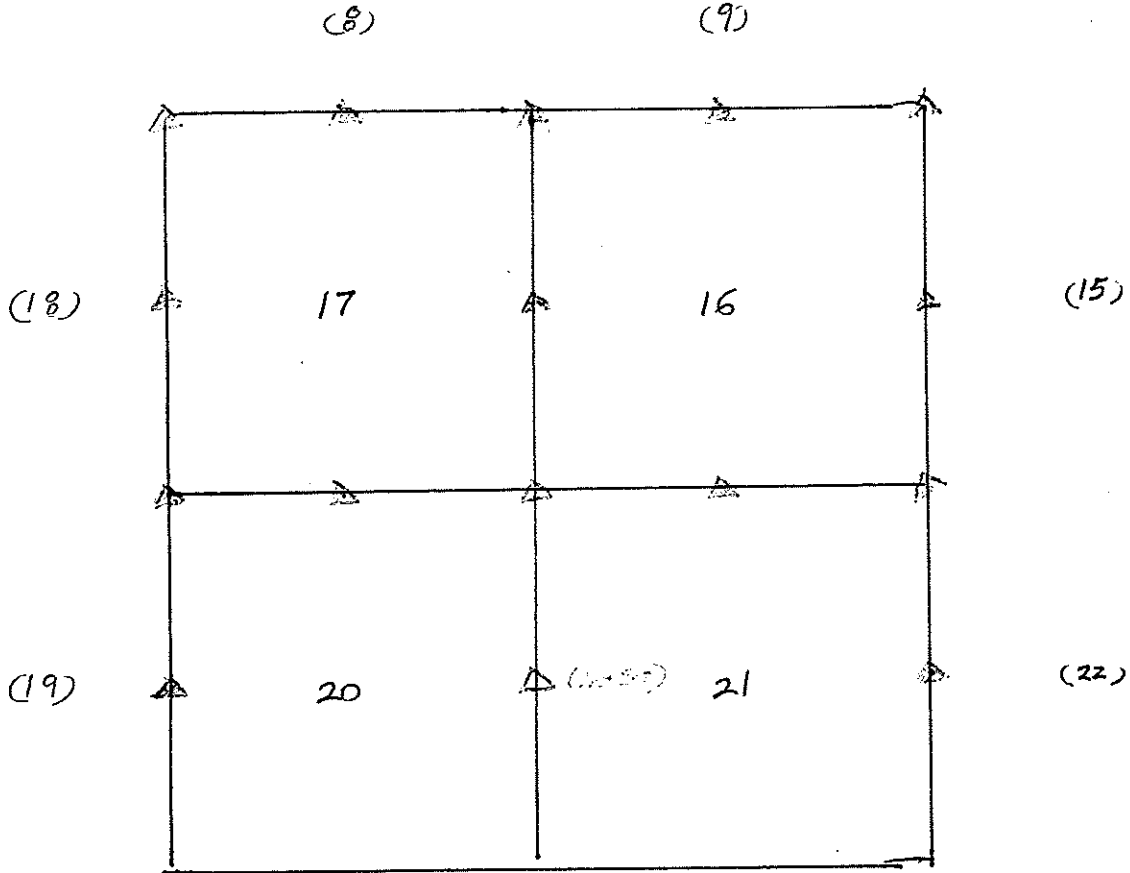
SUBJECT TITLE:

Land Lines T13N, R2W $\frac{17}{20}$ / $\frac{16}{21}$

CHECKED BY:

DATE:

CONTRACT NO.:



△ - See PD Pt 122A-213 for Contour Elevation

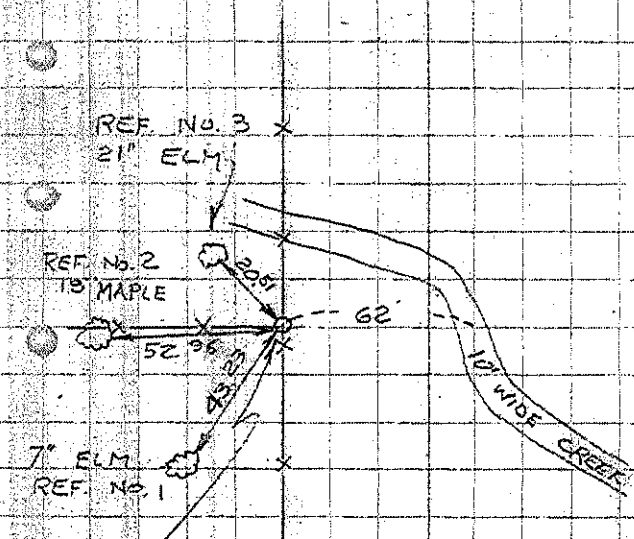
KICKAPOO RIVER
LA FARGE, WIS.

38 OF 83

PROPERTY SURVEY

6 NOV. 1965

PK	B.S.	F.S.	∠ RT.	DIST.
	7/8 FOR 18/17 2" PIPE SET	HONEY	REF. NO. 1	103°-32'-40" 43.23
"	"	"	REF. NO. 2	156°-30'-40" 52.96
"	"	"	REF. NO. 3	203°-55'-40" 20.51



REFERENCE TREES ARE BLAZED &
SCRIBED \bar{B} . DISTANCES ARE HORIZONTAL
& TO NAILS IN THE TREES. NAILS ARE
APPROX. 0.5 ABOVE GROUND & POINT
AT CORNER. BACK SIGHT TRAV. STA.
"HONEY"

2" IRON PIPE WITH BRASS CAP
SET AT FENCE CORNER FOR 7/8
FENCES ARE OLD & FAIRLY
STRAIGHT & ARE ACCEPTED BY
THE OWNERS.

18/17

KICKAPOO RIVER
LA FARGE, WLS.

(39) OF (83)

$\frac{718}{1817}$

GENERAL COMMENTS

1. Accepted fence corner.
2. There is no apparent "bottom" East of this corner now (Gov't dist. = 294') but it is possible that the creek that is East of the corner and has cut a deep swath near it has changed the appearance of this area. (Aerial maps show a point some 290' East of the corner @ same elevation of corner). I believe many of the creeks and gullies existent now occurred after the Gov't Survey and logging occurred.
3. No other gov't or County Surveyor references found.