

RECEIVED
 SEP 14 2004
 BY: m.m

VERNON COUNTY
 CERTIFIED U.S. PUBLIC LAND SURVEY MONUMENT RECORD

INSTRUCTIONS: THIS RECORD SHALL SHOW THE LOCATION OF THE CORNER AND SHALL INCLUDE ALL OF THE FOLLOWING ELEMENTS (A-I)

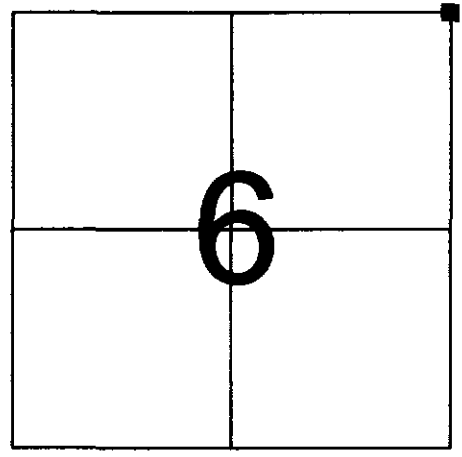
(A) IDENTIFY THE CORNER BY REFERENCE TO THE U.S. PUBLIC LAND SURVEY SYSTEM

■ = CORNER MONUMENT RESTORED

WITNESSES TO CORNER LOCATION:

- 1) PATRICK J. DEDERICH
- 2) JOHN E. DEDERICH

VERNON COUNTY COORDINATES
 NORTHING: 179,183.44
 EASTING: 764,901.65



SECTION 6, TOWN 13 NORTH, RANGE 2 WEST

(B) DESCRIBE ANY RECORD EVIDENCE, MONUMENT EVIDENCE, OCCUPATIONAL EVIDENCE, TESTIMONIAL EVIDENCE OR ANY OTHER MATERIAL EVIDENCE YOU CONSIDERED, AND WHETHER THE MONUMENT WAS FOUND OR PLACED.

FOUND ARMY CORPS OF ENGINEERS MONUMENT. ACCEPTED AND TIED AS SHOWN.

(C) IN THE PLAN VIEW DRAWING BELOW, PROVIDE REFERENCE TIES TO AT LEAST 4 WITNESS MONUMENTS OR, IF THE LOCATION IS WITHIN A MUNICIPALITY, TO AT LEAST 2 WITNESS MONUMENTS. (WITNESS MONUMENTS SHALL BE MADE OF CONCRETE, NATURAL STONE, IRON, OR OTHER EQUALLY DURABLE MATERIAL.) DESCRIBE WITNESS MONUMENTS.

(D) SHOW A PLAN VIEW DRAWING, DEPICTING THE RELEVANT MONUMENTS AND REFERENCE TIES, WHICH IS SUFFICIENTLY DETAILED TO ENABLE ACCURATE RELOCATION OF THE CORNER MONUMENT IF IT IS DISTURBED.

LEDGEND

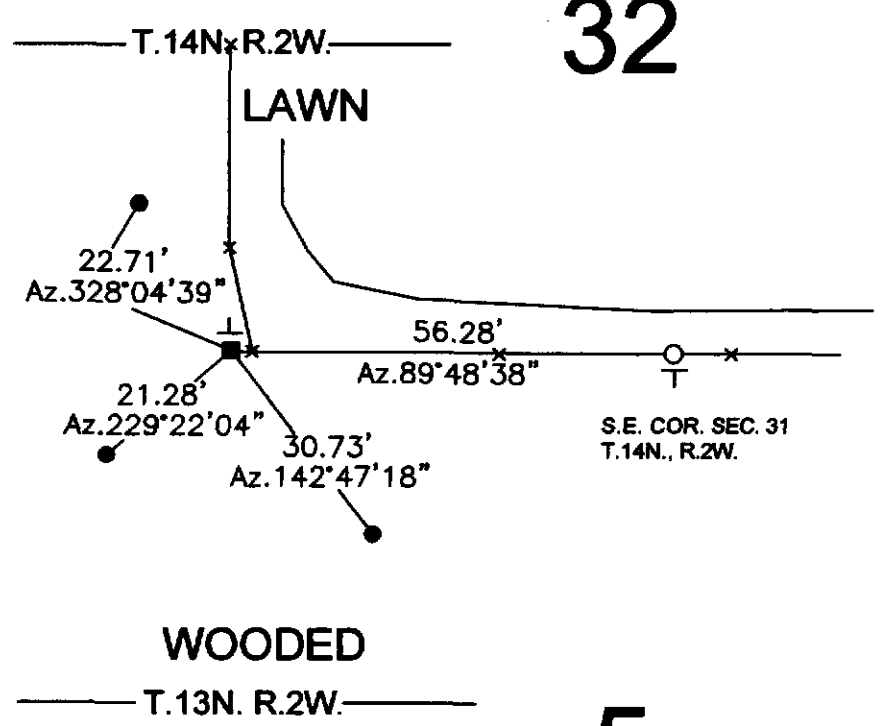
- 3/4" X 24" IRON ROD SET
- ⊥ GOV'T SIGN SET
- ARMY CORPS OF ENGINEERS MONUMENT FOUND
- ARMY CORPS OF ENGINEERS MONUMENT FOUND

NOT TO SCALE



WOODED

31



32

LAWN

S.E. COR. SEC. 31
 T.14N., R.2W.

WOODED

6

5

BEARINGS ARE BASED ON THE VERNON COUNTY COORDINATE SYSTEM NAD 83/91

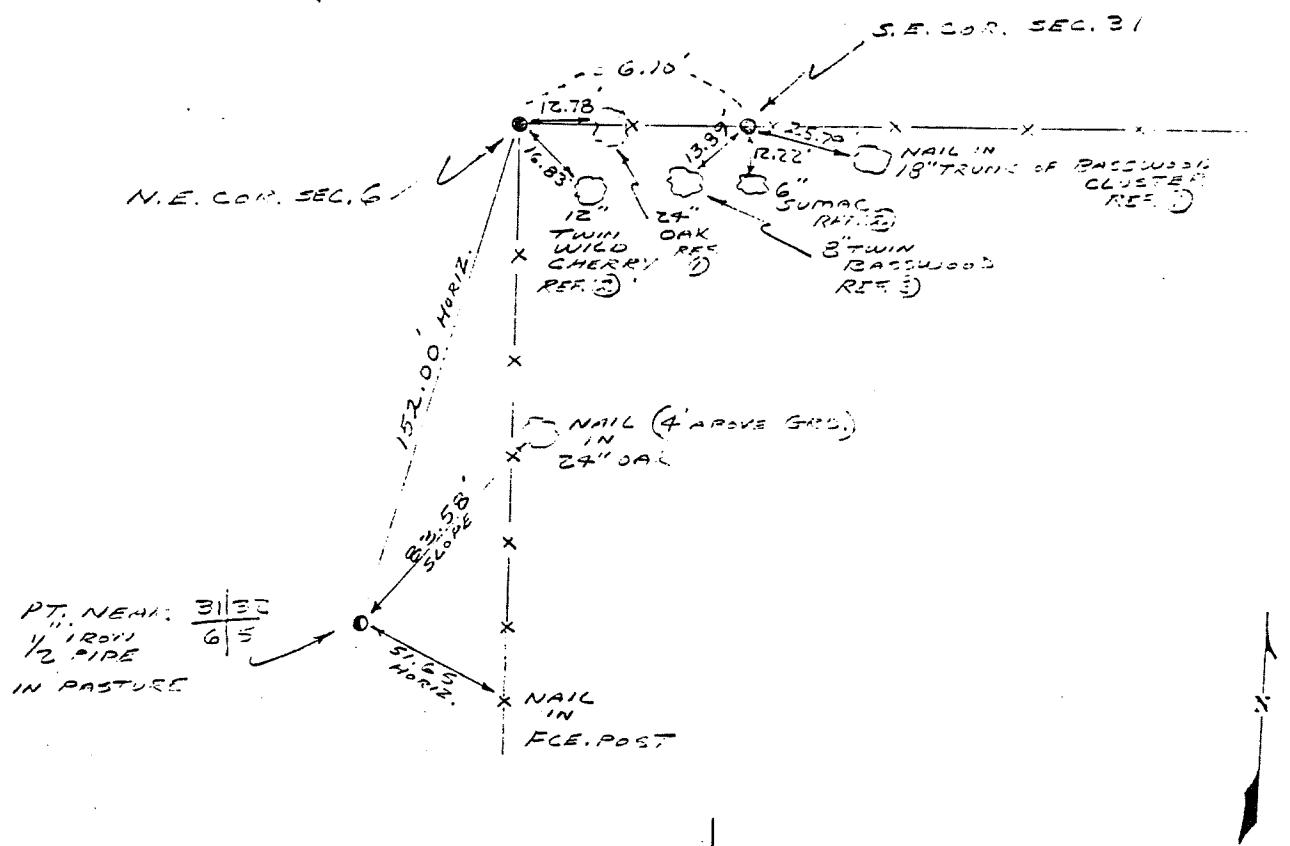
45

COUNTRY USA	TYPE OF MARK 2" I.P. WITH BRASS CAP 2" I.P. WITH BRASS CAP	STATION N.E. COR. SEC. 6 T13N R2E S.E. COR. SEC. 31 T14N R2E	ELEVATION (FT) (M)
LOCALITY LA FARGE, WIS.	STAMPING ON MARK 6/5	AGENCY (CAST IN MARKS) CORPS OF ENGRS.	
LATITUDE	LONGITUDE	DATUM	DATUM
(NORTHING)(EASTING) (FT) 597 936.27 (M)	(EASTING)(NORTHING) (FT) 1,827,566.10 (M)	GRID AND ZONE WIS. (SOUTH)	ESTABLISHED BY (AGENCY) CHICAGO DISTRICT
(NORTHING)(EASTING) (FT) 597 936.05 (M)	(EASTING)(NORTHING) (FT) 1,827,602.19 (M)	GRID AND ZONE WIS. (SOUTH)	DATE 1965

TO OBTAIN GRID AZIMUTH, ADD TO THE GEODETIC AZIMUTH
TO OBTAIN GRID AZ. (ADD)(SUB.) TO THE GEODETIC AZIMUTH

OBJECT	AZIMUTH OR DIRECTION (GEODETIC)(GRID) (MAGNETIC)	BACK AZIMUTH	GEOD. DISTANCE (METERS) (FEET)	GRID DISTANCE (METERS) (FEET)
PT. NEAR 3/130 4/5	N. 19° 32' 30" E			150
REF. NO. 1	N. 59° 23' 50" E	N.E. COR. SEC. 6		17.7
REF. NO. 2	S. 59° 52' 50" E			15.5
N.E. COR. SEC. 6	N. 29° 46' 15" W			56.5
REF. NO. 3	S. 52° 20' 35" E	S.E. COR. SEC. 31		25.0
REF. NO. 4	S. 12° 52' 25" W			12.2
REF. NO. 5	S. 20° 41' 05" W			13.5

REFERENCE DISTANCES TO SECTION CORNERS ARE HORIZONTAL AND ARE FROM NAILS IN TREES. TREES ARE BLAZED AND SCHEDULE 3.



SKETCH