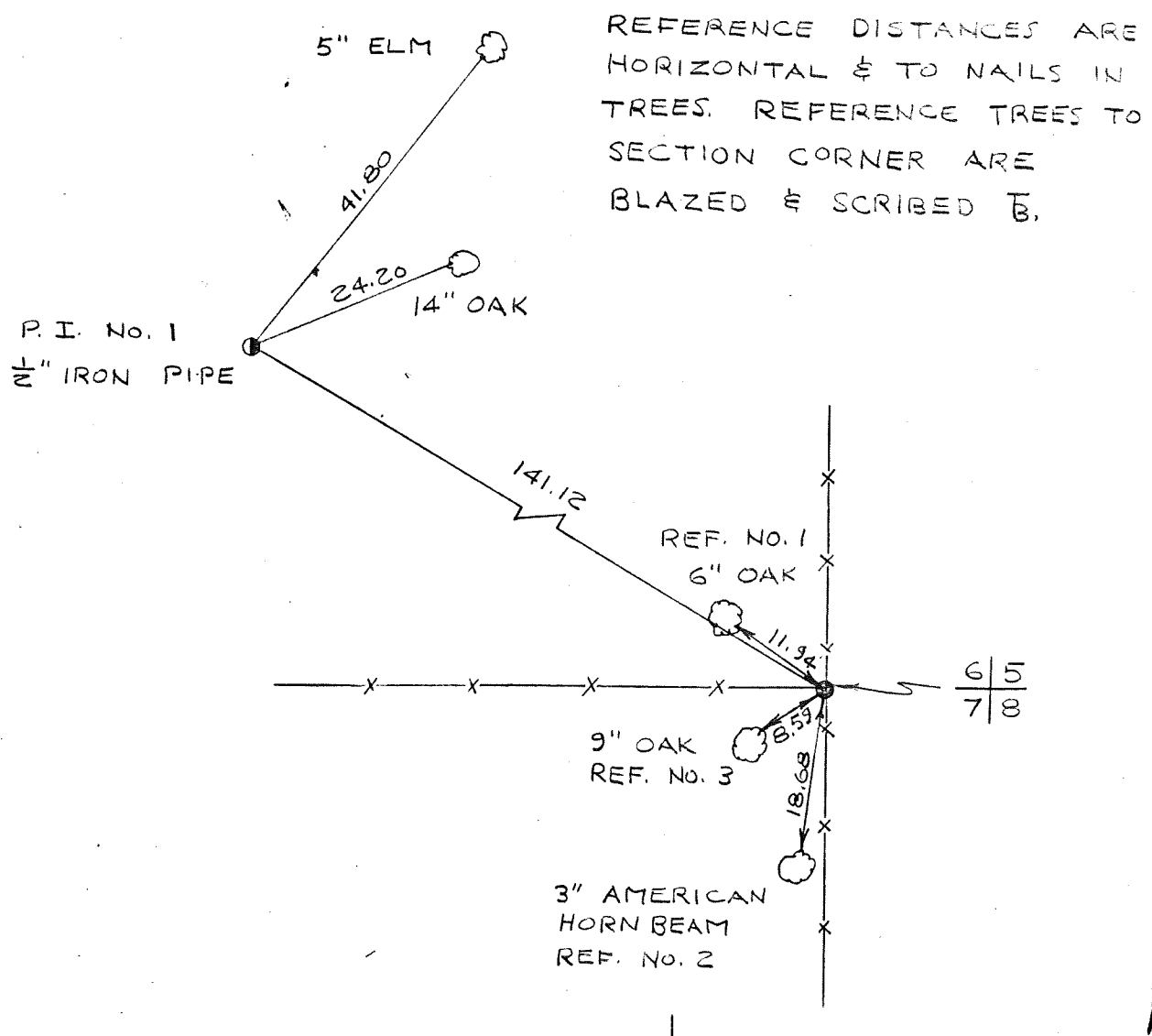


COUNTRY U. S. A.	TYPE OF MARK 2" IRON PIPE WITH BRASS CAP	STATION SECTION CORNER $\frac{6}{5}$ $\frac{7}{8}$	T. 13 N. R. 2 W.
LOCALITY LA FARGE, WIS.	STAMPING ON MARK $\frac{6}{5}$ $\frac{7}{8}$	AGENCY (CAST IN MARKS) CORPS OF ENGRS.	ELEVATION (FT) (M)
LATITUDE	LONGITUDE	DATUM	DATUM
(NORTHING)(EASTING) (FT) 892,845.38 (M)	(EASTING)(NORTHING) (FT) 1,827,500.25 (M)	GRID AND ZONE WIS. (SOUTH)	ESTABLISHED BY (AGENCY) CHICAGO DISTRICT
(NORTHING)(EASTING) (FT) (M)	(EASTING)(NORTHING) (FT) (M)	GRID AND ZONE	DATE 1965

TO OBTAIN GRID AZIMUTH, ADD TO THE GEODETIC AZIMUTH  
TO OBTAIN GRID AZ. (ADD)(SUB.) TO THE GEODETIC AZIMUTH

OBJECT	AZIMUTH OR DIRECTION (GEODETIC)(GRID) (MAGNETIC)	BACK AZIMUTH	GEOD. DISTANCE (METERS) (FEET)	GRID DISTANCE (METERS) (FEET)
P. I. No. 1	N. 59°-04'-15" W			141.12
REF. No. 1	N. 53°-50'-35" W			11.94
REF. No. 2	S. 08°-34'-45" W			18.68
REF. No. 3	S. 59°-24'-25" W			8.59



SKETCH