

VERNON COUNTY CERTIFIED U.S. PUBLIC LAND SURVEY MONUMENT RECORD

DATUM: WISCONSIN COORDINATE REFERENCE SYSTEM (WISCRS), VERNON COUNTY, NAD 83 (2011) ADJ.

VERNON COUNTY COORDINATES

NORTH	176,676.77
EAST	775,412.48

GEOGRAPHIC COORDINATES

LONG.	90°36'42.55350"
LAT.	43°37'54.39939"

*THE EAST 1/4 CORNER OF SECTION 4,
TOWN 13 NORTH, RANGE 2 WEST, TOWN OF
STARK, VERNON COUNTY, WISCONSIN.*

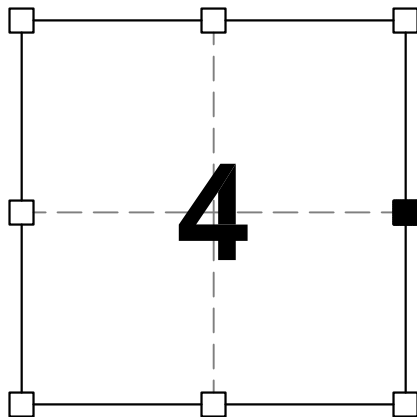
****COORDINATES MEET THE WISCONSIN COUNTY SURVEYOR'S ASSOCIATION "SURVEY GRADE" STANDARD****

(A) IDENTIFY THE CORNER BY REFERENCE TO THE U.S. PUBLIC LAND SURVEYSYSTEM

■ = CORNER MONUMENT RESTORED

WITNESS TO CORNER LOCATION:

**STEVEN A. ALT
TYLER D. ATKINSON**



SECTION 4
TOWN 13 NORTH, RANGE 2 WEST
TOWN OF STARK

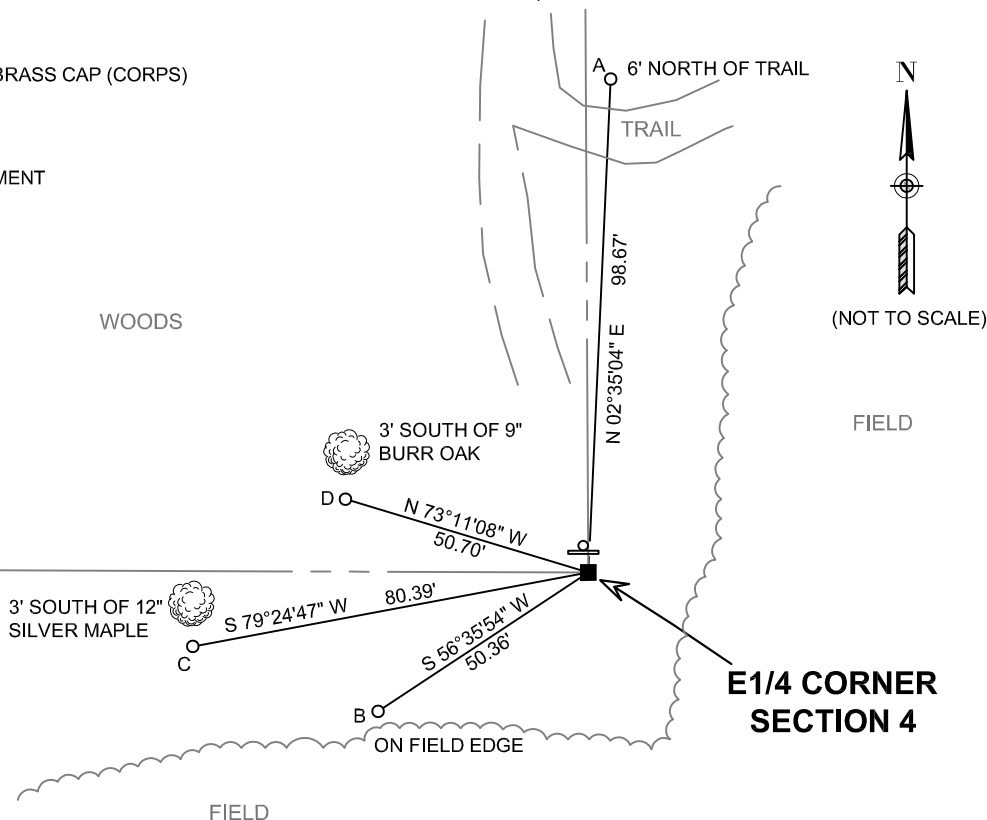
(B) DESCRIBE ANY RECORD EVIDENCE, MONUMENT EVIDENCE, OCCUPATIONAL EVIDENCE, TESTIMONIAL EVIDENCE OR ANY OTHER MATERIAL EVIDENCE YOU CONSIDERED, AND WHETHER THE MONUMENT WAS FOUND OR PLACED.

I COULD FIND NO MONUMENTS OR BEARING TREES FROM THE ORIGINAL GOVERNMENT SURVEY OR THE COUNTY SURVEYOR'S SUBSEQUENT RESURVEY. I RECOVERED THE 2" IRON PIPE WITH BRASS CAP SET BY RALPH J. VAN DORPE IN 1966. VON DORPE SET THIS CORNER AT AN EXISTING FENCE CORNER. I ACCEPTED HIS CORNER LOCATION AS THE BEST EVIDENCE OF THE ORIGINAL CORNER BASED ON THE OCCUPATIONAL EVIDENCE SHOWN AT THE TIME OF VAN DORPE'S SURVEY AND TIED THE CORNER AS SHOWN BELOW.

(C) IN THE PLAN VIEW DRAWING BELOW, PROVIDE REFERENCE TIES TO AT LEAST 4 WITNESS MONUMENTS OR, IF THE LOCATION IS WITHIN A MUNICIPALITY, TO AT LEAST 2 WITNESS MONUMENTS. (WITNESS MONUMENTS SHALL BE MADE ON CONCRETE, NATURAL STONE, IRON, OR OTHER EQUALLY DURABLE MATERIAL.) DESCRIBE WITNESS MONUMENTS.

LEGEND

- FOUND 2" IRON PIPE w/BRASS CAP (CORPUS)
- 3/4" x 24" IRON ROD SET AS ACCESSORY
- ⊕ "SURVEY MARKER" SIGN 1.0' +/- NORTH OF MONUMENT
- () RECORDED AS
- X — FENCE LINE



TIE TABLE

LETTER	BEARING	DISTANCE
A - B	S20°12'35"W	134.57'
B - C	N70°41'56"W	39.19'
C - D	N46°00'31"E	42.38'
D - A	N32°16'17"E	99.23'

(D) DESCRIBE ANY MATERIAL DISCREPANCY BETWEEN THE LOCATION OF THE CORNER AS RESTORED OR ESTABLISHED AND THE LOCATION OF THAT CORNER AS PREVIOUSLY RESTORED OR REESTABLISHED BY DISTANCE AND DIRECTION. SHOW THE DISCREPANCY ON THE PLAN VIEW DRAWING UNDER (C), ABOVE. SHOW THE DISTANCES BETWEEN THE CORNER AS PREVIOUSLY RESTORED OR REESTABLISHED AND (1) THE CORNER AS RESTORED OR REESTABLISHED, AND (2) TO AT LEAST 2 OF THE WITNESS MONUMENTS AS SHOWN ON THE DRAWING IN (C), ABOVE.

N/A

(E) WAS THE CORNER RESTORED THROUGH ACCEPTANCE OF (1) AN OBLITERATED EVIDENCE LOCATION, OR (2) A FOUND PERPETUATED LOCATION?

2.) A FOUND PERPETUATED LOCATION

(F & G) WAS THE CORNER REESTABLISHED THROUGH LOST CORNER PROPORTIONATE METHODS? IF SO SHOW THE METHOD, INCLUDING THE DIRECTION AND DISTANCED TO OTHER PUBLIC LAND SURVEY CORNERS USED AS EVIDENCE OR USED FOR PROPORTIONING IN DETERMINING THE CORNER LOCATION.

N/A

CORNER HISTORY:

ORIGINAL GOVERNMENT CORNER ESTABLISHED BY ALFRED L. BROWN IN JANUARY 1846.

WILLIAM H. KNOWER PERFORMED A SURVEY IN SECTION 3 AND 4 ON MARCH 4, 18879 WHERE HE FOUND THE CORNER.

WILLIAM H. KNOWER PERFORMED A SURVEY IN SECTION 3 ON MAY 24, 1881 WHERE HE TOOK A NEW BEARING TREE.

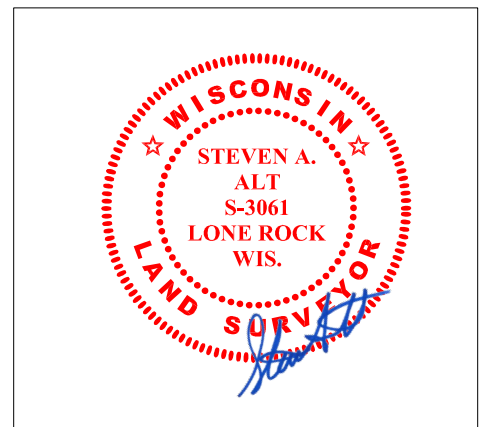
WILLIAM H. KNOWER PERFORMED A SURVEY IN SECTION 4 ON SEPTEMBER 15, 1888 WHERE HE TOOK A NEW BEARING TREE.

RALPH J. VAN DORPE SET A 2" IRON PIPE WITH BRASS CAP WHILE PERFORMING A SURVEY FOR THE U.S.A.C.O.E DATED FEBRUARY 23, 1966. THE IRON PIPE IS ALSO SHOWN ON A DATA SHEET DATED 2/23/1966.

STEPHEN J. SOLBERG UTILIZED THIS CORNER WHILE PERFORMING A SURVEY IN SECTION 4 ON APRIL 30, 2001.

ETHAN D. REMUS UTILIZED THIS CORNER WHILE PERFORMING A SURVEY IN SECTION 4 ON MARCH 16, 2015.

AFFIX LAND SURVEYOR SEAL



(H) I, STEVEN A. ALT, P.L.S 3061-8 CERTIFY THAT THE CORNER LOCATION SHOWN ON THIS RECORD WAS DETERMINED BY ME OR UNDER MY DIRECTION AND CONTROL AND THAT THIS U.S. PUBLIC LAND SURVEY MONUMENT RECORD IS CORRECT AND COMPLETE TO THE BEST OF MY KNOWLEDGE AND BELIEF.

SIGNATURE

4-13-19

DATE

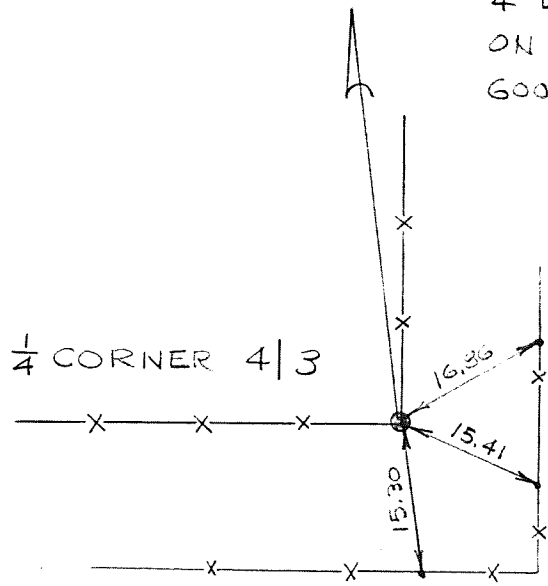
COUNTRY U. S. A.		TYPE OF MARK 2" IRON PIPE WITH BRASS CAP		STATION 1/4 CORNER 4 3		T. 13 N. R. 2 W.	
LOCALITY LA FARGE, WIS.		STAMPING ON MARK 4 3		AGENCY (CAST IN MARKS) CORPS OF ENGRS.		ELEVATION (FT) (M)	
LATITUDE		LONGITUDE		DATUM		DATUM	
(NORTHING)(EASTING) (FT)	(EASTING)(NORTHING) (FT)	GRID AND ZONE		ESTABLISHED BY (AGENCY)			
595,332.31 (M)	1,838,053.21 (M)	WIS. (SOUTH)		CHICAGO DISTRICT			
(NORTHING)(EASTING) (FT)	(EASTING)(NORTHING) (FT)	GRID AND ZONE		DATE		ORDER	
(M)	(M)			1965			

TO OBTAIN GRID AZIMUTH, ADD TO THE GEODETIC AZIMUTH
 TO OBTAIN GRID AZ. (ADD)(SUB.) TO THE GEODETIC AZIMUTH

OBJECT	AZIMUTH OR DIRECTION (GEODETIC)(GRID) (MAGNETIC)	BACK AZIMUTH	GEOD. DISTANCE (METERS) (FEET)	GRID DISTANCE (METERS) (FEET)
AZ. MARK	N. 07°-12'-10" W.	" "		
RATTLESNAKE	N. 83°-42'-40" W			3534.35
REF. NO. 1	N. 59°-28'-20" E.			16.36
REF. NO. 2	S. 66°-42'-40" E.			15.41
REF. NO. 3	S. 07°-29'-20" E.			15.30

REFERENCE DISTANCES ARE HORIZONTAL & TO NAILS IN FENCE POSTS. TRAV. STA. RATTLESNAKE CAN BE USED FOR A BACKSIGHT IN THE WINTER, USE THE AZ. MARK IN THE SUMMER.

TO AZ. MARK - MOST EASTERLY OF 4 LIGHTNING RODS ON A BARN APPROX. 600' N. 07°-12'-10" W.



SKETCH