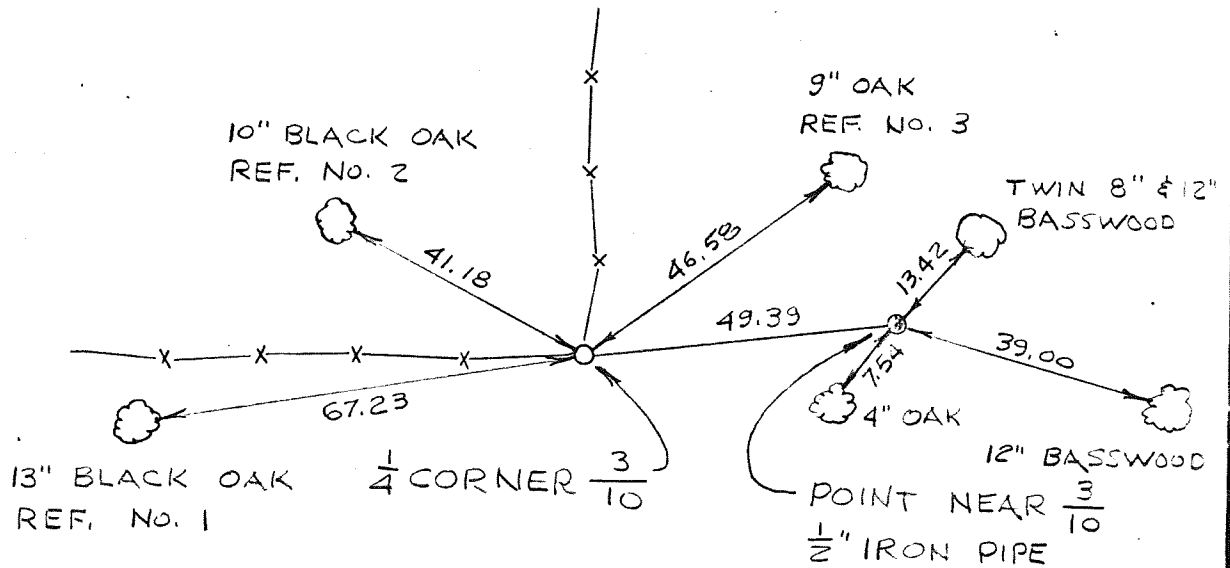


COUNTRY U. S. A.		TYPE OF MARK 1" IRON PIPE WITH BRASS CAP		STATION $\frac{1}{4}$ CORNER $\frac{3}{10}$		T. 13. N. R. 2 W.	
LOCALITY LA FARGE, WIS.		STAMPING ON MARK $\frac{3}{10}$		AGENCY (CAST IN MARKS) CORPS OF ENGRS.		ELEVATION (FT) (M)	
LATITUDE		LONGITUDE		DATUM		DATUM	
(NORTHING)(EASTING) 592,702.05	(FT) (M)	(EASTING)(NORTHING) 1,840,656.61	(FT) (M)	GRID AND ZONE WIS. (SOUTH)		ESTABLISHED BY (AGENCY) CHICAGO DISTRICT	
(NORTHING)(EASTING)	(FT) (M)	(EASTING)(NORTHING)	(FT) (M)	GRID AND ZONE		DATE 1965	ORDER

TO OBTAIN GRID AZIMUTH, ADD TO THE GEODETIC AZIMUTH  
 TO OBTAIN GRID AZ. (ADD)(SUB.) TO THE GEODETIC AZIMUTH

OBJECT	AZIMUTH OR DIRECTION (GEODETIC)(GRID) (MAGNETIC)	BACK AZIMUTH	GEOD. DISTANCE (METERS) (FEET)	GRID DISTANCE (METERS) (FEET)
$\frac{3}{10}$	" "	" "		
POINT NEAR $\frac{3}{10}$	N. 83°-03'-07" E.			49.39
REF. No. 1	S. 81°-38'-47" W.			67.23
REF. No. 2	N. 62°-21'-33" W.			41.18
REF. No. 3	N. 54°-49'-47" E.			46.58

REFERENCE DISTANCES ARE HORIZONTAL & TO NAILS IN TREES. REFERENCE TREES TO  $\frac{1}{4}$  CORNER ARE BLAZED & SCRIBED  $\frac{3}{10}$ .  $\frac{1}{4}$  CORNER IS APPROX. 62' WEST OF A DIRT FARM ROAD.



SKETCH