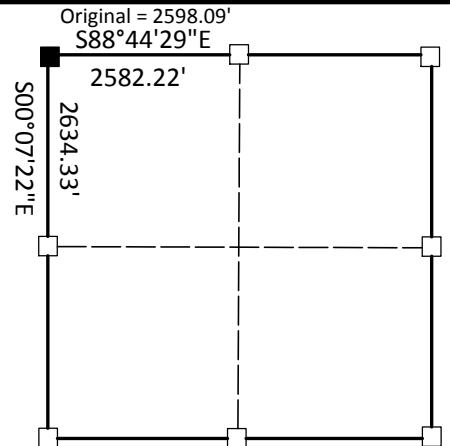


U.S. PUBLIC LAND SURVEY MONUMENT RECORD

(a) Corner Location
 Township 13 North
 Range 2 West
 Town of Stark
 Vernon County

I, Richard Marks, certify that the corner location on this record was determined by me and that this U.S. public land survey monument record is correct and complete to the best of my knowledge and belief.
 Dated this 24th day of October, 2013

Richard Marks R.L.S. # S-1473



■ = corner location

Section 11



History of corner establishment:

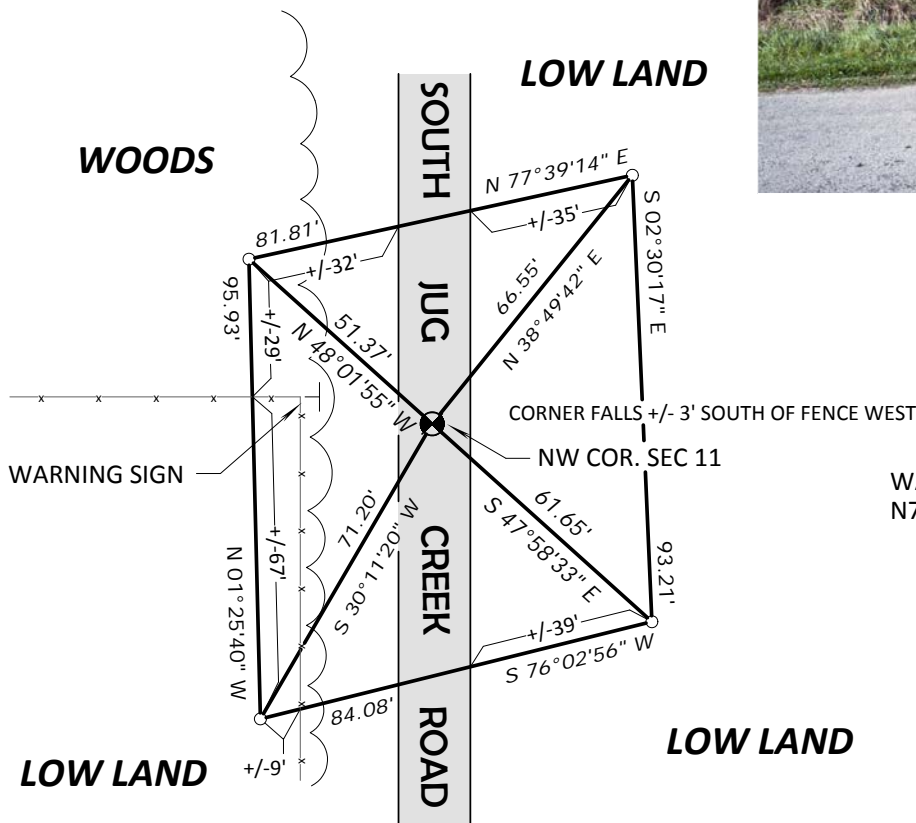
Original survey was done by Alfred L. Brown in January, 1846. On April 27, 1888 Knower was at this corner. On February 23, 1966 Ralph Van Dorpe set a 2" iron pipe with a brass cap in the centerline of South Jug Creek Road and an east - west fence line.

Description of corner evidence found:

I found the 2" iron pipe set by Van Dorpe and set a Lunde Monument in its place. The 2" iron pipe no longer had a brass cap. I also found a square bolt next to the iron pipe.

Description of corner and witness monuments, references and accessories used to perpetuate the original or re-established location of this corner.

Bearings are grid based on the Vernon County coordinate system designed by the Wisconsin Department of Transportation. NAD83 (2011)
 Witness corners are 3/4" x 24" solid round iron rods set.
 I set a Lunde monument at this corner.



WARNING SIGN LOCATED
 N76°30'09"W, 24.15' FROM CORNER.

Control: COMBINATION OF GPS AND CONVENTIONAL FIELD CONTROL

Datum: NAD 83 (2011)		County coordinates		State plane coordinates	
Lat.	43°37'28.641321"	North	174079.98'	North	592684.89'
Long.	90°35'31.315577"	East	780657.94'	East	1811742.66'

VERNON COUNTY COORDINATE FORM

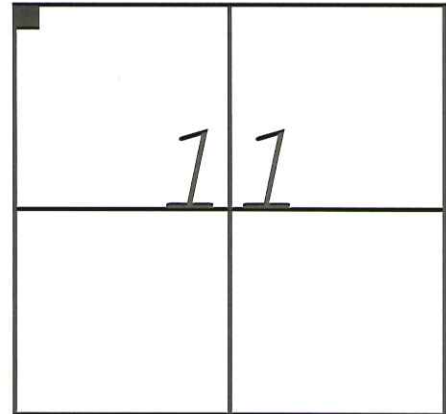
"As An Addendum To"

A CERTIFIED U.S. PUBLIC LAND SURVEY MONUMENT RECORD

INSTRUCTIONS: THIS RECORD FORM SHOULD BE USED WHEN COORDINATES ARE PROVIDED FOR A PUBLIC LAND SURVEY CORNER AND SHALL INCLUDE ALL OF THE FOLLOWING ELEMENTS (A-D)

(A) IDENTIFY THE CORNER BY REFERENCE TO THE U.S. PUBLIC LAND SURVEY SYSTEM IN DIAGRAM AT RIGHT

■ = CORNER MONUMENT



T 13 N, R 2 EW

(B) COORDINATES:

GEOGRAPHIC (Degrees Minutes Decimal Seconds to 4 places):

LATITUDE: 43°37'28.6413"

LONGITUDE: 90°35'31.3156"

ELLIPSOID HT (m): 230.56

HORIZONTAL DATUM: NAD 83 (2011)

ORTHOMETRIC HT (U.S. ft): 866.96'

VERTICAL DATUM: NAVD 88

VERNON COUNTY (U.S. FEET)

Cord. Quality (+/-)

NORTHING (Y): 174079.98'

0.05'

EASTING (X): 780657.94'

0.05'

METHOD USED TO COMPUTE COORDINATES (check and complete as applicable):

RTK Observations Static Baselines OPUS Solution (attach copy of OPUS report)

Combination of conventional procedures with GPS observations to set temporary control

Was a Least Squares Adjustment Used to Compute Coordinate? Yes / **No**

For Non-OPUS Based Solutions, List the Control Stations Used for Coordinate Computations (a minimum of 2 different control stations or 2 different time combinations from the same control station are required):

Obs. #	Control Station Name	Station Coordinates (Lat/Long)	Date	Time
1	Rockton GPS	43°38'44.97186" 90°36'05.06654"	9-24-2013	10:30AM
2	Rockton GPS	43°38'44.97186" 90°36'05.06654"	10-22-2013	11:00AM

* Please List Additional Control Stations Used on Back of Form

When a direct observation of the corner is not possible, and a combination of different GPS and/or conventional procedures must be used to determine coordinate values, provide a brief description of your procedures on the back of form.

(C) REASON FOR COORDINATE SUBMITTAL (check one):

Being Filed With a New U.S. PLS Monument Record

To Correct the Coordinates Listed on a Previously Filed PLS Monument Record

To Provide Coordinates for a Previously Filed PLS Monument Record without Coordinates

To Provide Supplemental Coordinates for a Previously Filed PLS Monument Record

R.L.S. & DATE OF PLS MONUMENT RECORD: _____

(D) AGENT(S) PERFORMING GPS OBSERVATIONS & COORDINATE COMPUTATION

1) Richard Marks

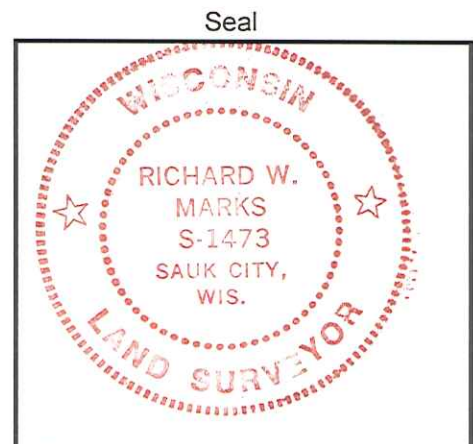
2) Daniel Marks

I, Richard Marks
CERTIFY THAT THE COORDINATES PROVIDED ON THIS RECORD WERE DETERMINED BY ME OR UNDER MY DIRECTION AND CONTROL AND THAT THIS COORDINATE SUBMISSION FORM IS CORRECT AND COMPLETE TO THE BEST OF MY KNOWLEDGE AND BELIEF.

10-24-2013

SIGNATURE

DATE



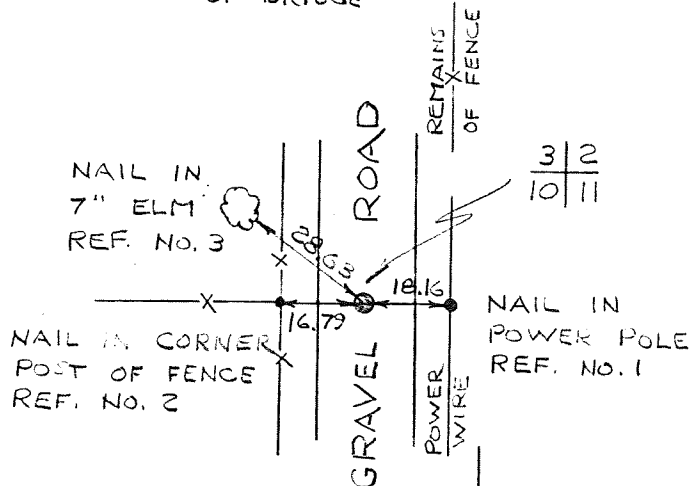
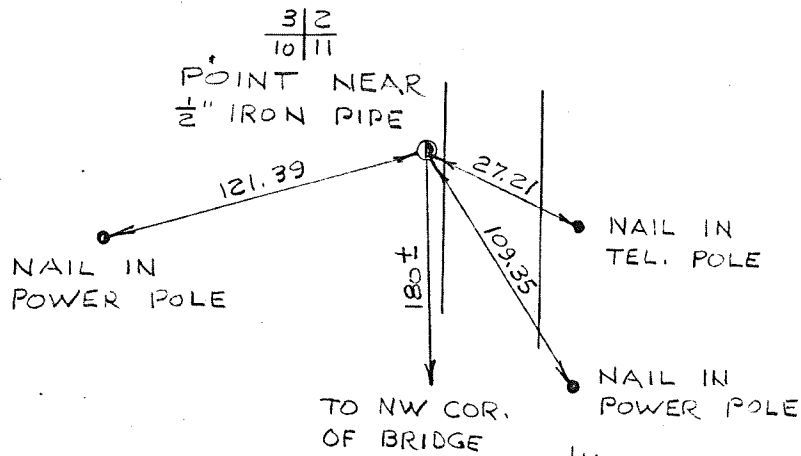
* Please Provide Any Additional Notes/Information on Back of Form

COUNTRY U. S. A.		TYPE OF MARK 2" IRON PIPE WITH BRASS CAP		STATION SECTION CORNER $\frac{3 2}{10 11}$ T. 13 N. R. 2 W.	
LOCALITY LA FARGE, WIS.		STAMPING ON MARK $\frac{3 2}{10 11}$		AGENCY (CAST IN MARKS) CORPS OF ENGRS.	
LATITUDE		LONGITUDE		DATUM	
(NORTHING)(EASTING) (FT)		(EASTING)(NORTHING) (FT)		GRID AND ZONE	
592,686.41 (M)		1,343,271.67 (M)		WIS. (SOUTH)	
(NORTHING)(EASTING) (FT)		(EASTING)(NORTHING) (FT)		GRID AND ZONE	
				ESTABLISHED BY (AGENCY) CHICAGO DISTRICT	
				DATE 1965	

TO OBTAIN GRID AZIMUTH, ADD TO THE GEODETIC AZIMUTH
TO OBTAIN GRID AZ. (ADD)(SUB.) TO THE GEODETIC AZIMUTH

OBJECT	AZIMUTH OR DIRECTION (GEODETIC)(GRID) (MAGNETIC)	BACK AZIMUTH	GEOD. DISTANCE (METERS) (FEET)	GRID DISTANCE (METERS) (FEET)
$\frac{3 2}{10 11}$	" "	" "		
POINT NEAR $\frac{3 2}{10 11}$	N. 00°-12'-52" W			1200.10
REF. No. 1	N. 97°-15'-48" E			18.16
REF. No. 2	N. 89°-54'-52" W			16.79
REF. No. 3	N. 51°-59'-52" W			28.63

REFERENCE DISTANCES ARE HORIZONTAL. CORNER IS BURIED APPROX. 0.75' IN ϕ ROAD. REFERENCE TREE IS BLAZED & SCRIBED \bar{B} .



SKETCH