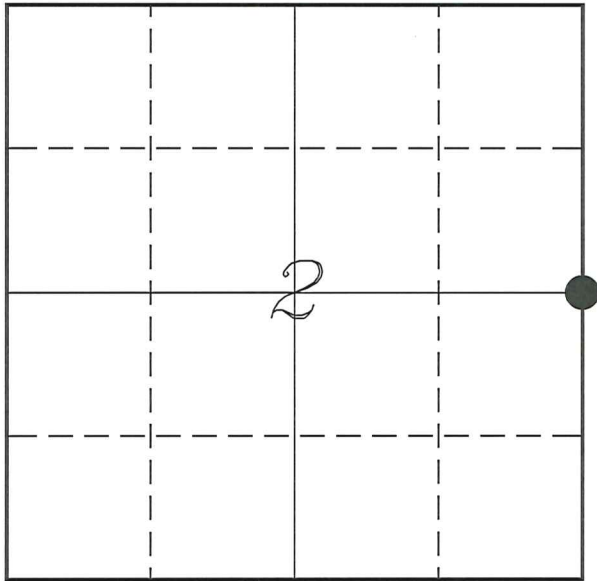


U. S. PUBLIC LAND SURVEY MONUMENT RECORD

SECTION 2, T13N, R2W, TOWN OF STARK
VERNON COUNTY, WISCONSIN



LOCATION OF LANDMARK

VERNON COUNTY COORDINATE SYSTEM	
Northing	176612.969
Easting	785825.554
Datum	NAD 1983 (2011)
Elevation	
Datum	
TYPE OF LANDMARK: Existing Lunde Monument 4" Brass Capped Iron Pipe	
BEARINGS ARE REFERENCED TO: Vernon County Coordinates (Survey Grade)	

Witnesses: Laurence E Johns III
Larry Handschy

Date: 15 August 2016

Describe or show any material discrepancy between the location of the restored corner and that of the corner previously restored or re-established.

Henry Maddin established this corner in December 1846.

Wm Knower was at this corner, in June 1888, during a survey in Section 1. He shows that he found the government corner.

Laurence Johns was at this corner, in August 2016, during a remonumentation project in the township. I recorded that I found a Lunde monument from an unknown source.

Christian Running was at this corner, in July 2017 & October 2019, during surveys in Section 1. He shows he found a county monument.

James Carroll was at this corner, in September 1985, during a survey in Section 1. He shows he replaced a spike with a 1 1/2" iron pipe.

Describe any record evidence, monument evidence, testimonial evidence or any other material evidence you considered and whether the monument was found or restored through acceptance of an obliterated evidence location.

No bearing trees of record were located.

During the process of minor remonumentation project in this portion of the township during the summer of 2016. I visited this corner and found an existing Lunde monument from an unknown source.

James Carroll stated he replaced a spike that he found at a fence corner with a 1 1/2" iron pipe. Based on measured and recorded distances, the found Lunde monument appears to have been placed at the location of the iron pipe set by Carroll.

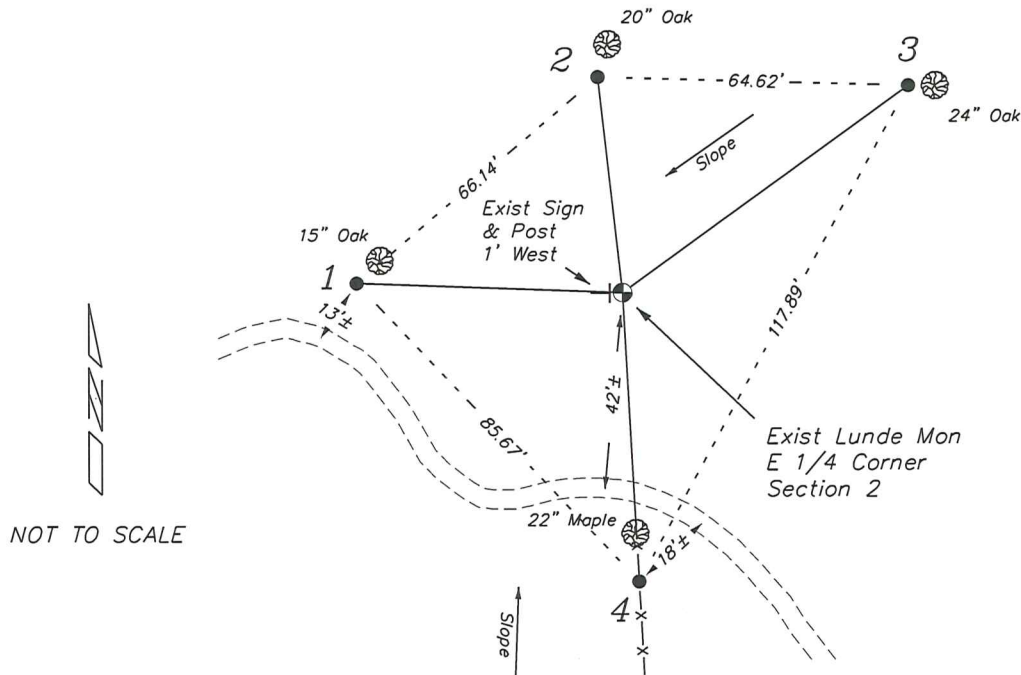
There isnt much of a fence corner left, but Carroll shows he set his pipe at the fence corner.

Based on distances shown on Knower's survey, I believe that the fence corner found by Carroll and some pieces are still left was placed based on Knower's survey.

I accepted the current Lunde monument as representing the location of the original government corner.

RECORD OF DURABLE WITNESS MONUMENTS

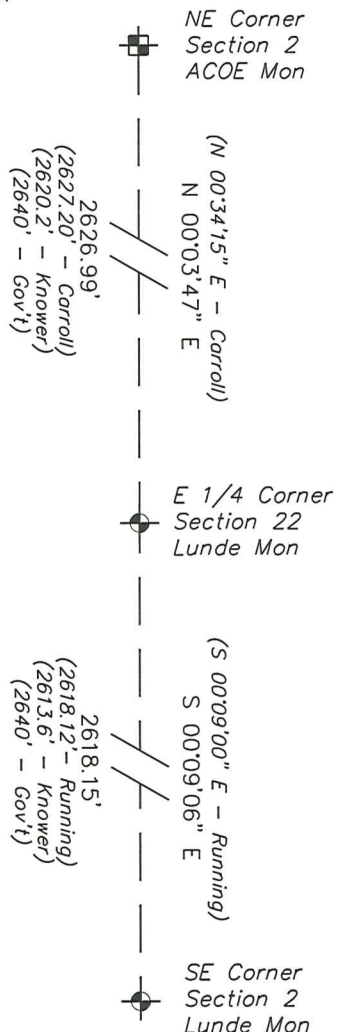
NO	DESCRIPTION	BEARING	DISTANCE
1	Set 3/4" x 18" Iron Rod 3' Southwest of a 15" Oak	N 87°59'52" W	55.40'
2	Set 3/4" x 18" Iron Rod 4' South of a 20" Oak	N 06°33'00" W	45.29'
3	Set 3/4" x 18" Iron Rod 1' West of a 24" Oak	N 53°57'16" E	73.51'
4	Set 3/4" x 18" Iron Rod In Old Fence - 6' South of a 22" Maple	S 03°10'35" E	60.53'



PLAN VIEW DRAWING OF REFERENCE TIES

Map Showing Distance And Direction To Other Public Land Survey Corners Used For Re-Establishing The Corner

ACOE = Army Corps of Engineers



I, Laurence E Johns III PLS 2804, Professional Land Surveyor, hereby certify that the corner location shown on this record was determined by me or under my direction and control, and that this U.S. Public Land Survey Monument Record is correct and complete to the best of my knowledge and belief.