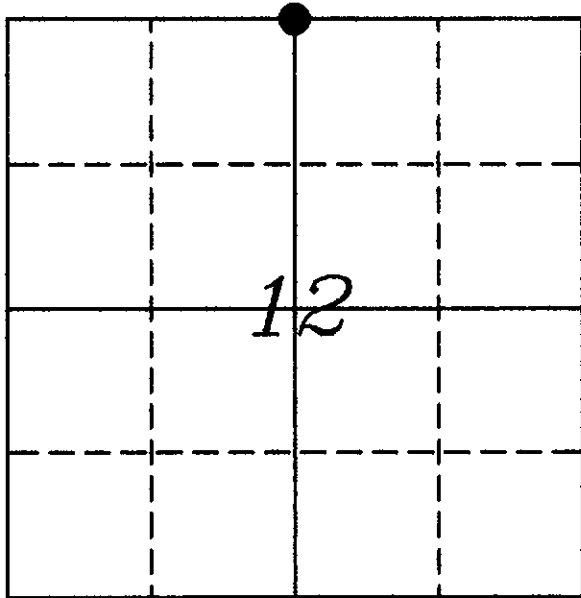

U. S. PUBLIC LAND SURVEY MOUMENT RECORD

SECTION 12, T13N, R2W, TOWN OF STARK VERNON COUNTY, WISCONSIN



VERNON COUNTY COORDINATE SYSTEM	
Northing	174015.699
Easting	788477.896
Elevation	
TYPE OF LANDMARK:	
Set Vernon County Lunde Monument	
BEARINGS ARE REFERENCED TO:	
Vernon County Grid	

LOCATION OF LANDMARK

Crew: Stephen J Solberg
Laurence E Johns III
Larry Handschy

Date: 31 October 2006

Describe any record evidence, monument evidence, testimonial evidence or any other material evidence you considered and whether the monument was found or restored through acceptance of an obliterated evidence location.

No evidence was found of any monument that may have been set by D Hoagland in July 1980. No evidence of the original bearing trees were found.

Government notes call for a spring being located 60 links East and 20 links North of this corner. No Spring was found but an area was noted that may have been a spring at some time in the past. The government plat indicates that the current stream begins at this spring. The stream currently begins somewhere up the valley. There may have been a change in the water table to cause a change in location for this spring.

The distance to the east matches very closely with the government notes. Fences to the south and interior 40 fences in the SW Quarter and the NW Quarter match very well with the location of this corner.

Based on this evidence, I accepted this location as the best possible location for this corner

Describe or show any material discrepancy between the location of the restored corner and that of the corner previously restored or re-established.

Dennis Hoagland used this corner in July 1980 but did not set a monument. Measurements indicate that he used the fence corner.

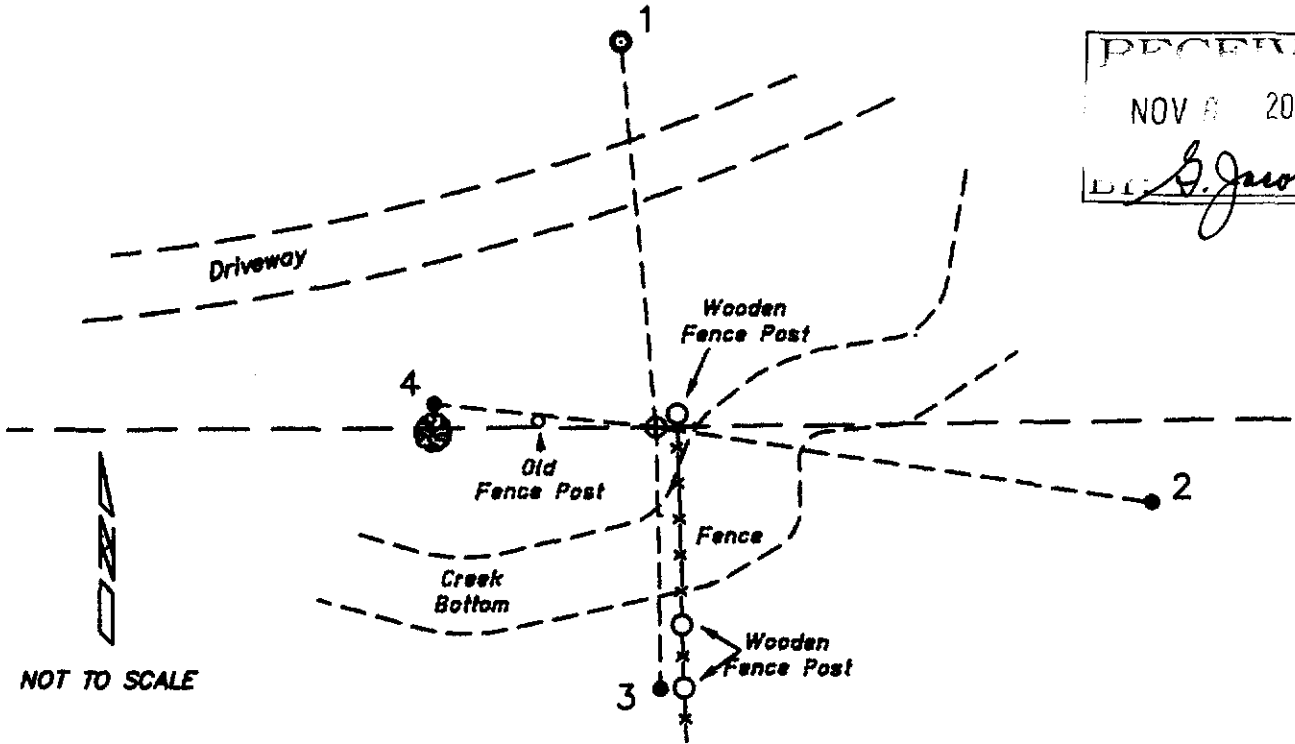
RECORD OF DURABLE WITNESS MONUMENTS

NO	DESCRIPTION	BEARING	DISTANCE
1	Exist 1" Iron Pipe from Survey by D. Hoagland dtd 7/31/80	N 05°17'20" W	205.60'
2	Set 3/4" x 18" Iron Rod	S 81°17'10" E	130.75'
3	Set 3/4" x 18" Iron Rod	S 00°59'53" E	68.26'
4	Set 3/4" x 18" Iron Rod on North Side of a 30" Black Oak	N 84°00'51" W	58.08'

RECEIVED

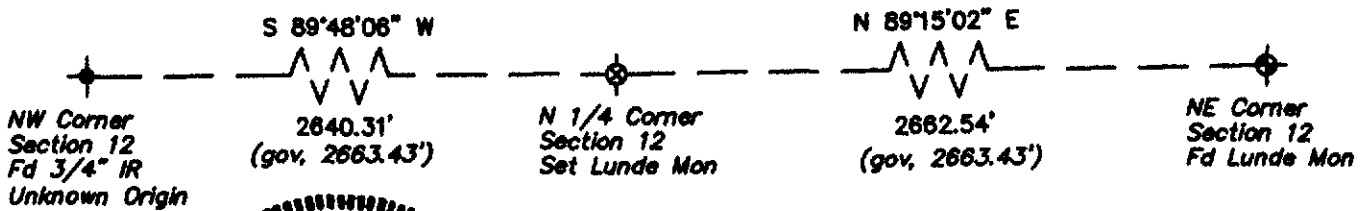
NOV 8 2006

S. Jacobson



PLAN VIEW DRAWING OF REFERENCE TIES

Map Showing Distance And Direction To Other Public Land Survey
Corners Used For Re-Establishing The Corner



I, Stephen J Solberg, Registered Land Surveyor, hereby certify that the corner location shown on this record was determined by me or under my direction and control, and that this U.S. Public Land Survey Monument Record is correct and complete to the best of my knowledge and belief.

Stephen J. Solberg

Stephen J Solberg RLS 1846
 Eagle Ridge Surveying
 PO Box 213
 Wilton, Wisconsin