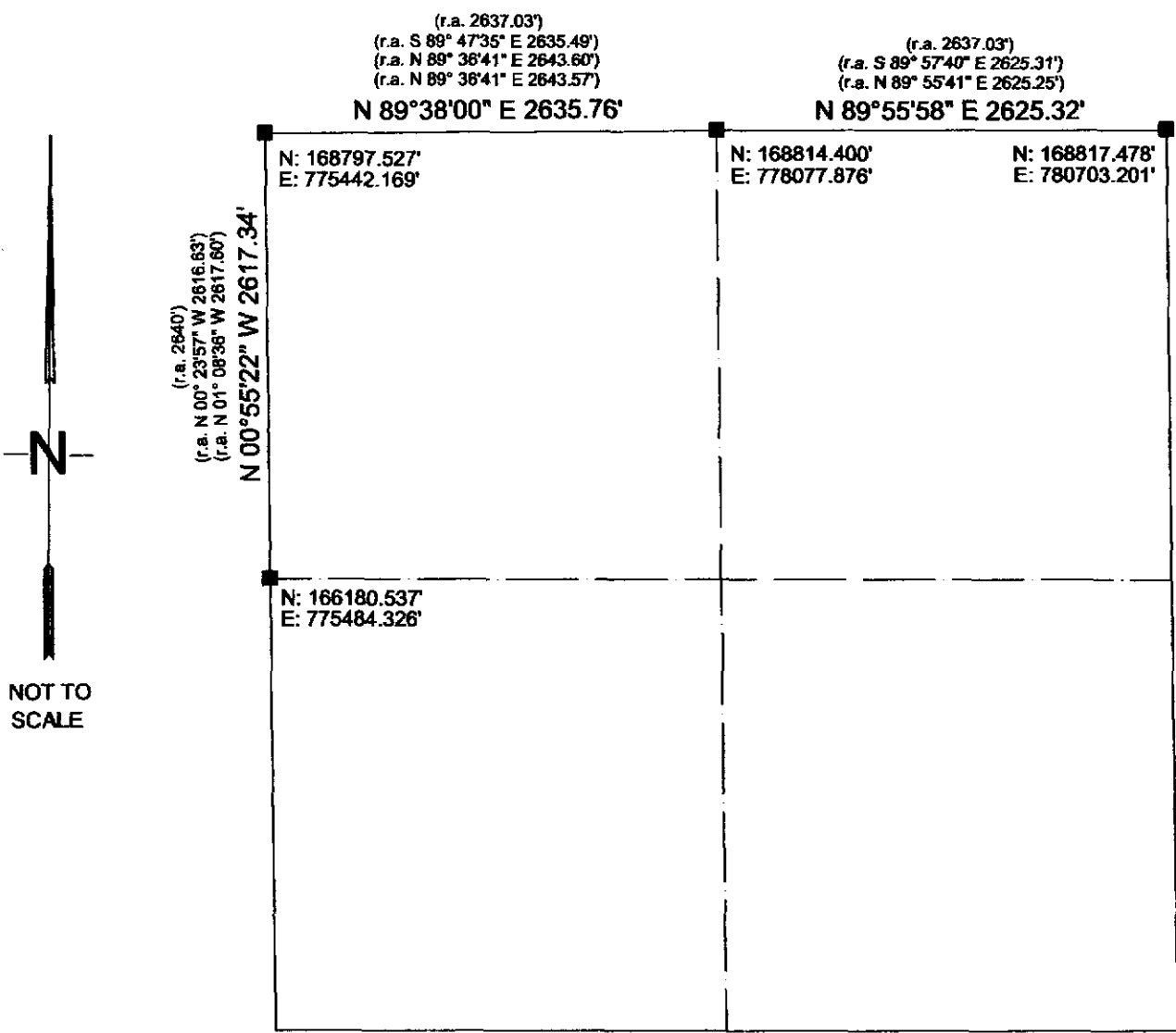



RECEIVED
 MAR 3 2004
 BY: *G. Jacobson*

VERNON COUNTY SECTION DATA SHEET
 SECTION 15, TOWN 13 NORTH, RANGE 2 WEST



NOT TO SCALE

Bearings are referenced to Grid North, Vernon County Coordinate System.

		CORNER	Type of Corner Monument / Comments
 Surveyor's Signature		W 1/4 Corner	EXISTING 2" IRON PIPE W/ BRASS CAP
		NW Corner	LUNDE MONUMENT SET BY LAMPMAN 2-25-04
Date: <i>2-28-04</i> Surveyor's Seal		N 1/4 Corner	EXISTING IRON PIPE W/ 2" ALUMINUM CAP
		NE Corner	EXISTING BRASS CAPPED MONUMENT
