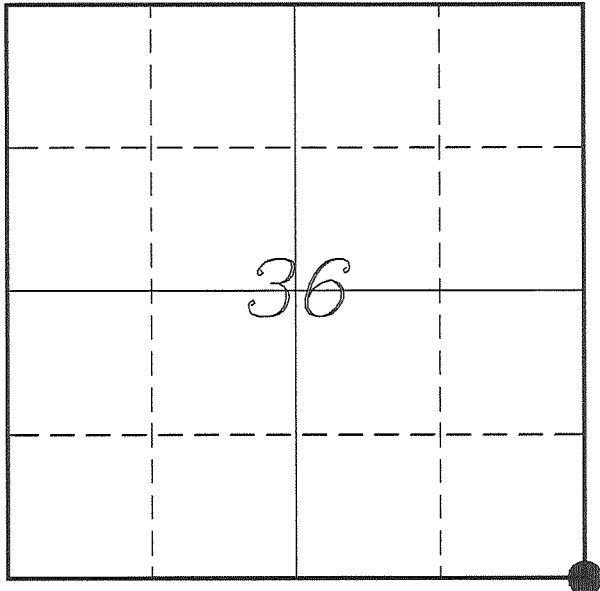


**U. S. PUBLIC LAND SURVEY MONUMENT RECORD**

**SECTION 36, T13N, R1W, TOWN OF UNION  
VERNON COUNTY, WISCONSIN**



*LOCATION OF LANDMARK*

Witnesses: Al Hoff

Date: 29 January 2017

<i>VERNON COUNTY COORDINATE SYSTEM</i>	
<i>Northing</i>	<i>148388.820</i>
<i>Easting</i>	<i>823284.031</i>
<i>Datum</i>	<i>NAD 1983 (2011)</i>
<i>Elevation</i>	
<i>Datum</i>	
<i>TYPE OF LANDMARK:</i>	
<i>Existing Richland County Monument</i>	
<i>BEARINGS ARE REFERENCED TO:</i>	
<i>Vernon County Coordinates (Survey Grade)</i>	

*Eagle Ridge Surveying  
PO Box 213  
Wilton, Wisconsin*

*Describe any record evidence, monument evidence, testimonial evidence or any other material evidence you considered and whether the monument was found or restored through acceptance of an obliterated evidence location.*

No bearing trees of record were located.

Found the Richland County Monument as shown on Janiak's tie sheet. We found 2 of his ties. His tie sheet states that he found a stone with 'X' at a long standing fence corner. He replaced the stone with the monument.

Measurements to the East/North & West are less than 10 ft from the government notes.

I accepted the Richland Co Monument as the best available evidence of the original government corner.

*Describe or show any material discrepancy between the location of the restored corner and that of the corner previously restored or re-established.*

James M Marsh established this corner in April 1845.

Wm Knower was at this corner, in June 1878, during a survey in Section 31.

Matthew Janiak was at this corner, in May 1986. He set a Richland Co Monument and prepared a tie sheet.

James Carroll was at this corner, in November 1994, during a survey in Section 36. He shows finding a Richland County Monument.

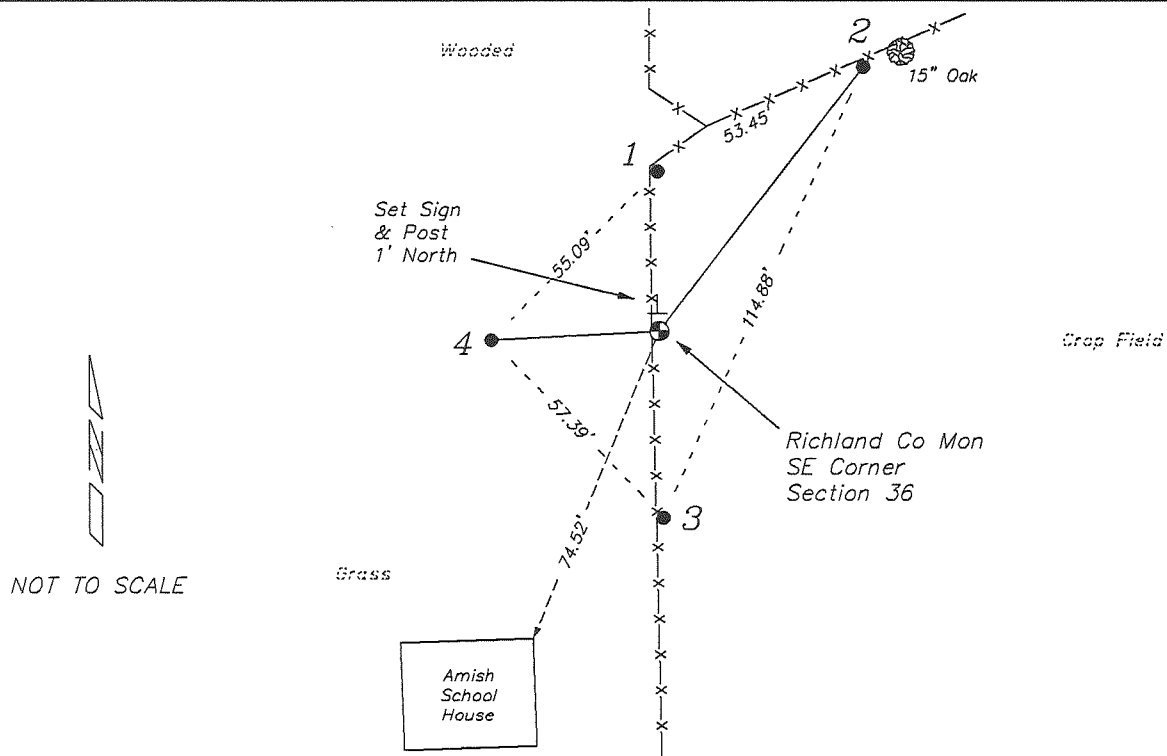
Nicholas Jennings was at this corner, in March 2005, during a survey in Section 36. He shows this corner on a tie sheet for the S 1/4 Corner of Section 36.

Jay Adams was at this corner, in November 2012, during a survey in Section 31. He shows that he found a cast iron monument.

Patrick Carroll was at this corner, in July 2001, December 2007 & April 2014, during surveys in Section 36. He shows finding a Richland County Monument. His measurement to the West was to the N 1/4 Corner of Section 1, T12N, R1W.

# RECORD OF DURABLE WITNESS MONUMENTS

NO	DESCRIPTION	BEARING	DISTANCE
1	Existing 3/4" Iron Rod Possibly Adams Tie	N 00°28'06" W	37.31'
2	Set 3/4" x 18" Iron Rod In Fence - 3' West of a 15" Oak	N 37°24'41" E	77.74'
3	Existing 1" Iron Pipe Janiak Tie Sheet	S 01°17'07" E	43.42' (43.44')
4	Existing 3/4" Iron Rod Janiak Tie Sheet	S 86°56'54" W	38.88'



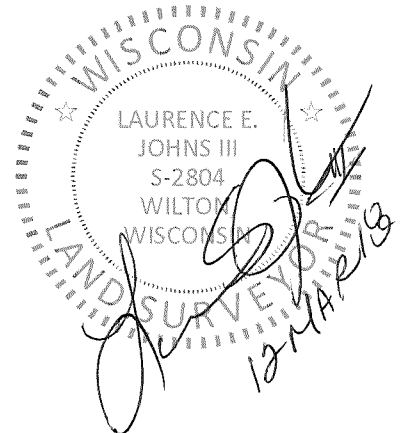
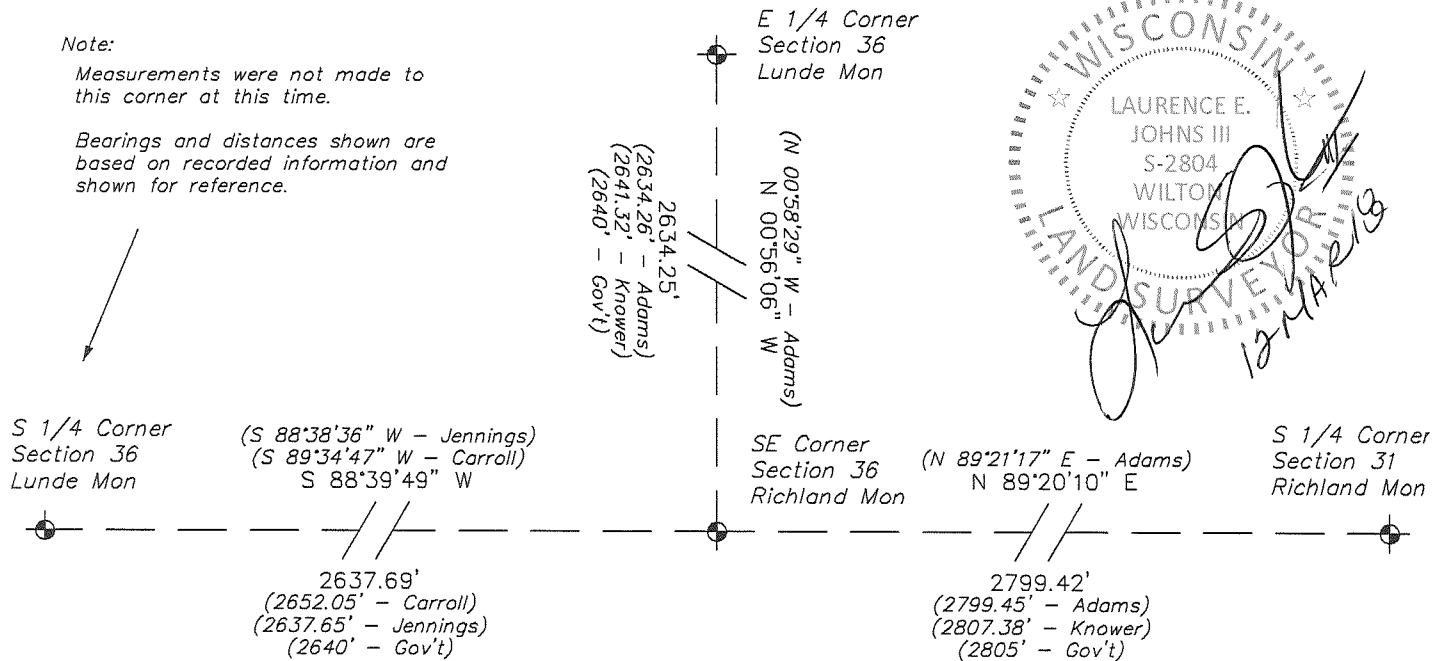
## PLAN VIEW DRAWING OF REFERENCE TIES

Map Showing Distance And Direction To Other Public Land Survey Corners Used For Re-Establishing The Corner

**Note:**

Measurements were not made to this corner at this time.

Bearings and distances shown are based on recorded information and shown for reference.



I, Laurence E Johns III PLS 2804, Professional Land Surveyor, hereby certify that the corner location shown on this record was determined by me or under my direction and control, and that this U.S. Public Land Survey Monument Record is correct and complete to the best of my knowledge and belief.

187352

# Richland County

## GOVERNMENT CORNER RECORD

NW CORNER, SECTION 6, TOWNSHIP 12 NORTH, RANGE 1 EAST - ~~WEST~~,  
TOWN, CITY OR VILLAGE OF HENRIETTA, RICHLAND CO.

TYPE OF MONUMENT: RICHLAND CAST IRON ELEVATION - M.S.L. DATUM \_\_\_\_\_

STATE PLANE COORDINATES: N \_\_\_\_\_

WISCONSIN SOUTH ZONE E \_\_\_\_\_

WITNESSES TO CORNER LOCATION

MATTHEW J. JANIAK

SEAN M. WALSH

**RECORDED**

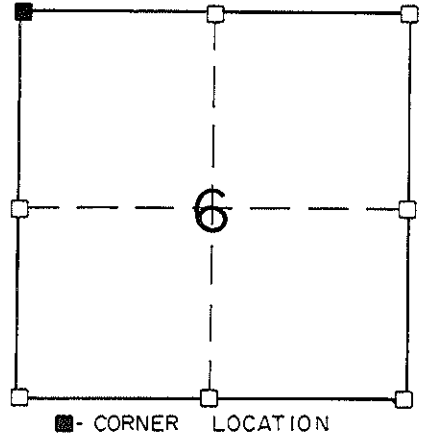
AT 10:30 O'CLOCK A M.

JUN 5 1986

VOL. 1 OF Corner PAGE 13  
SY MILLER, REGISTER OF DEEDS  
RICHLAND COUNTY, WISCONSIN

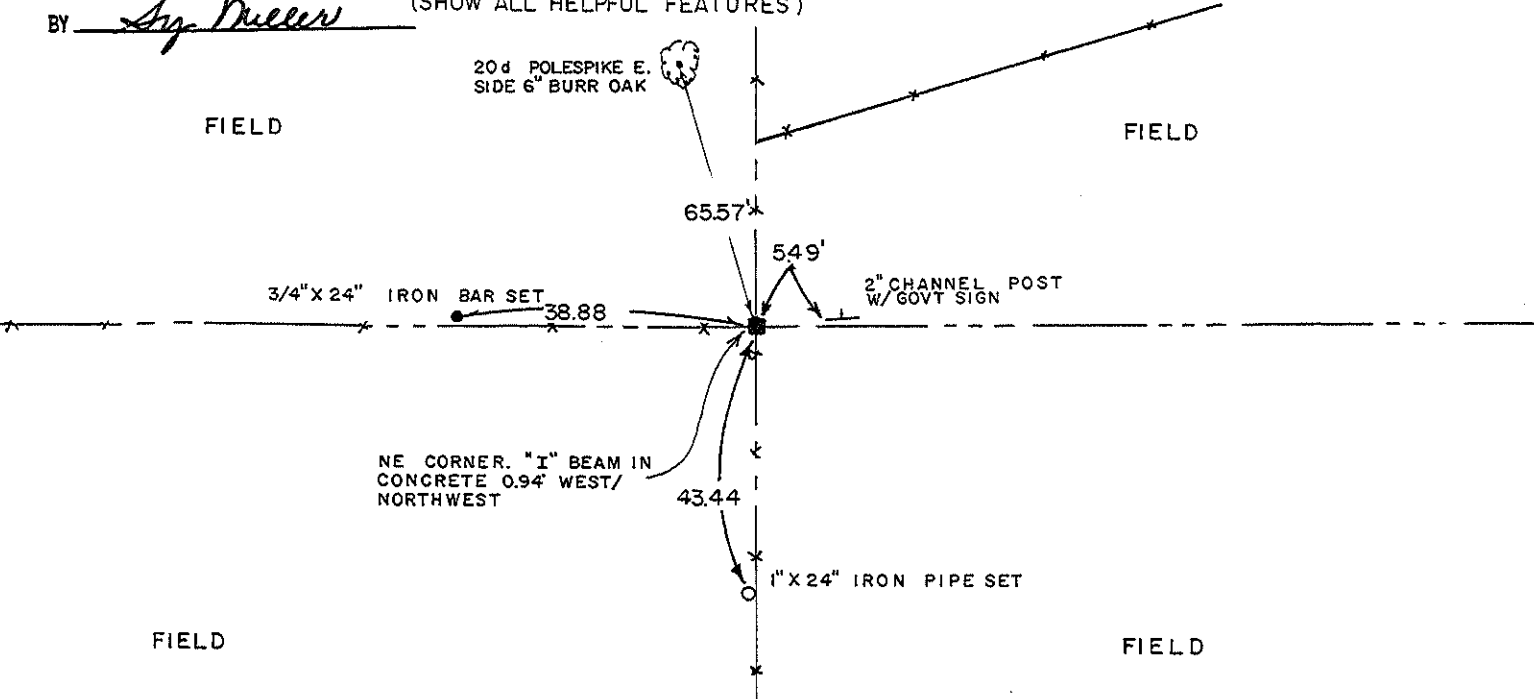
BY Ag Miller

SECTION 6, T 12 N, R 1 EW  
TOWN OF HENRIETTA



■ - CORNER LOCATION

TIE SKETCH  
(SHOW ALL HELPFUL FEATURES)

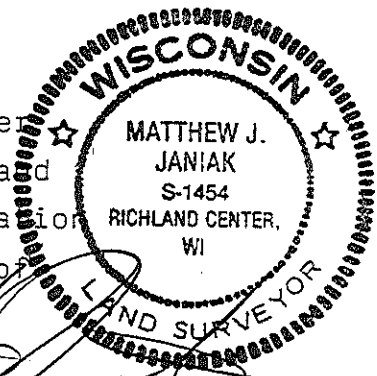


SURVEYOR'S CERTIFICATE

STATE OF WISCONSIN)  
RICHLAND COUNTY ) SS

SEAL S-1454

I, Matthew J. Janiak, DO HEREBY CERTIFY THAT I located a stone (4"x10"x24") with a chiseled cross lying just under the surface of the ground. Replaced stone with a Richland County Cast Iron Monument and took the reference information as shown hereon. This location is correct to the best of my knowledge and belief.



DATED THIS 7th DAY OF May, 19 86

REGISTERED LAND SURVEYOR

CORNER CODE

COUNTY SURVEYORS USE ONLY

CORNER MAINTANENCE INFORMATION


CORNER APPROVED  , DATE 5-30-86  
  
RICHLAND COUNTY SURVEYOR, S 1454

ADDITIONAL INFORMATION IF NECESSARY

Owner of adjacent land stated that his farm has been in his family 120 years and that the location of the corner post has always been in the same location. The stone that was located was most likely pushed over when the corner post was last reset. Land owner thought that it was about 50 years ago that the post was replaced. The current post is a 6" "I" beam set in concrete. Concrete base is 18" across adn at least 42" into the ground. With his testimony I accepted the location as described on the front of this document and monumented the same. 5/7/86

=====