

VERNON COUNTY CERTIFIED U.S. PUBLIC LAND SURVEY MONUMENT RECORD

INSTRUCTIONS: THIS RECORD SHALL SHOW THE LOCATION OF THE CORNER AND SHALL INCLUDE ALL OF THE FOLLOWING ELEMENTS (A-I)

*VERNON Co. MONUMENT SET
w/ BRASS DISC ATOP*

(A) IDENTIFY THE CORNER BY REFERENCE TO THE U.S. PUBLIC LAND SURVEY SYSTEM

■ = CORNER MONUMENT RESTORED

WITNESSES TO CORNER LOCATION:

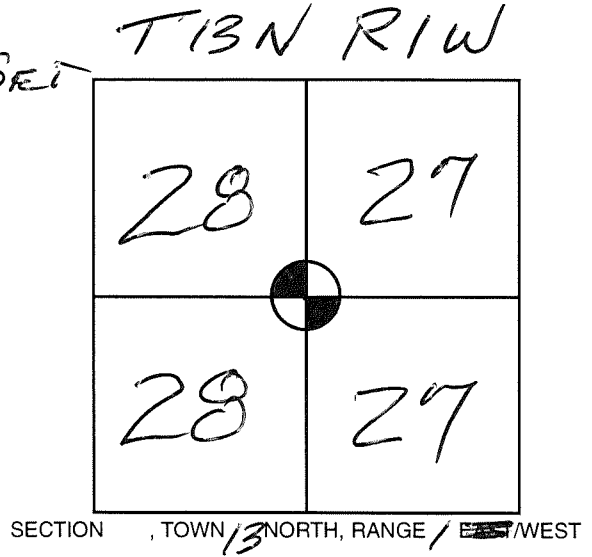
- 1) *COREY FAUERBACH*
- 2)
- 3) *JOE KELBEC*

STATE PLANE COORDINATES (WISCONSIN SOUTH ZONE)

NORTHING:
EASTING:

VERNON COUNTY COORDINATES

NORTHING: *N 156014.77*
EASTING: *E 807335.01*



(B) DESCRIBE ANY RECORD EVIDENCE, MONUMENT EVIDENCE, OCCUPATIONAL EVIDENCE, TESTIMONIAL EVIDENCE OR ANY OTHER MATERIAL EVIDENCE YOU CONSIDERED, AND WHETHER THE MONUMENT WAS FOUND OR PLACED.

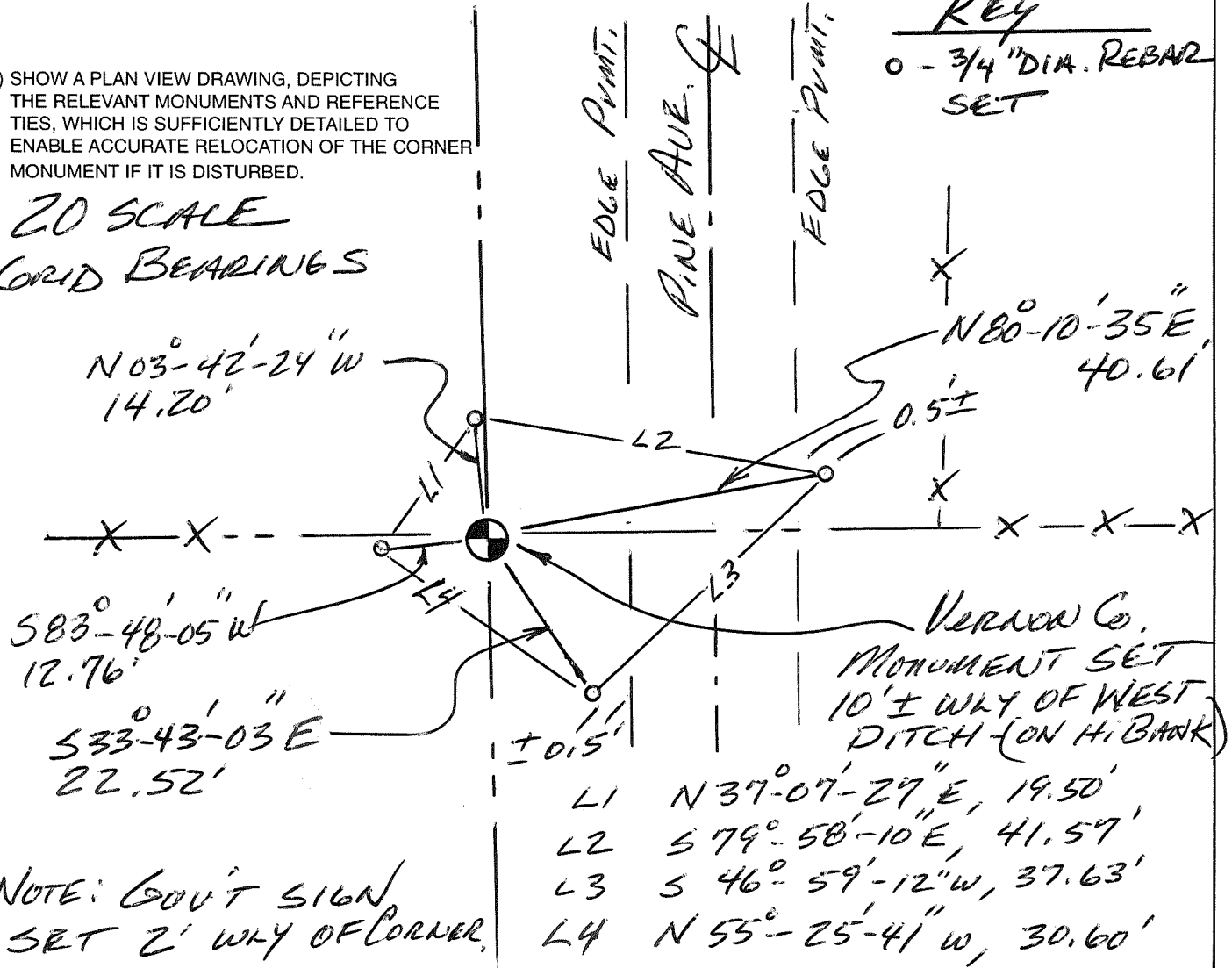
ORIG. GOV'T. SUBDIV. OF TOWN WAS JAN 3-12, 1846 BY ALFRED L. BROWN. HE RAN NORTH BETW. SECTIONS 27 & 28 CALLING OUT BT'S AT E 1/4 COR. OF SEC. 28 - FOUND NONE. PASSING CALLS LITTLE HELP. ON FEB 17-19, 1890 WM. KROWER RAN E. LINE SE 1/4 OF SECTION 28 (SURVEY # 478, Pg 357) CALLING NO BT'S AT E 1/4 CORNER SEC. 28. HE CALLED E 1/16 ± SE 1/4 A STONE - NONE FOUND. I FOUND A STUMP (ARGUABLE BT) & OCCUPIED F.C. AT N 1/16 ± SE 1/4 WHICH CHECKED SOMEWHAT WITH MY METHOD.

(C) IN THE PLAN VIEW DRAWING BELOW, PROVIDE REFERENCE TIES TO AT LEAST 4 WITNESS MONUMENTS OR, IF THE LOCATION IS WITHIN A MUNICIPALITY, TO AT LEAST 2 WITNESS MONUMENTS. (WITNESS MONUMENTS SHALL BE MADE OF CONCRETE, NATURAL STONE, IRON, OR OTHER EQUALLY DURABLE MATERIAL.) DESCRIBE WITNESS MONUMENTS.

(D) SHOW A PLAN VIEW DRAWING, DEPICTING THE RELEVANT MONUMENTS AND REFERENCE TIES, WHICH IS SUFFICIENTLY DETAILED TO ENABLE ACCURATE RELOCATION OF THE CORNER MONUMENT IF IT IS DISTURBED.

Key
○ - 3/4" DIA. REBAR SET

*20 SCALE
GRID BEARINGS*



*NOTE: GOV'T SIGN
SET 2' W of CORNER.*

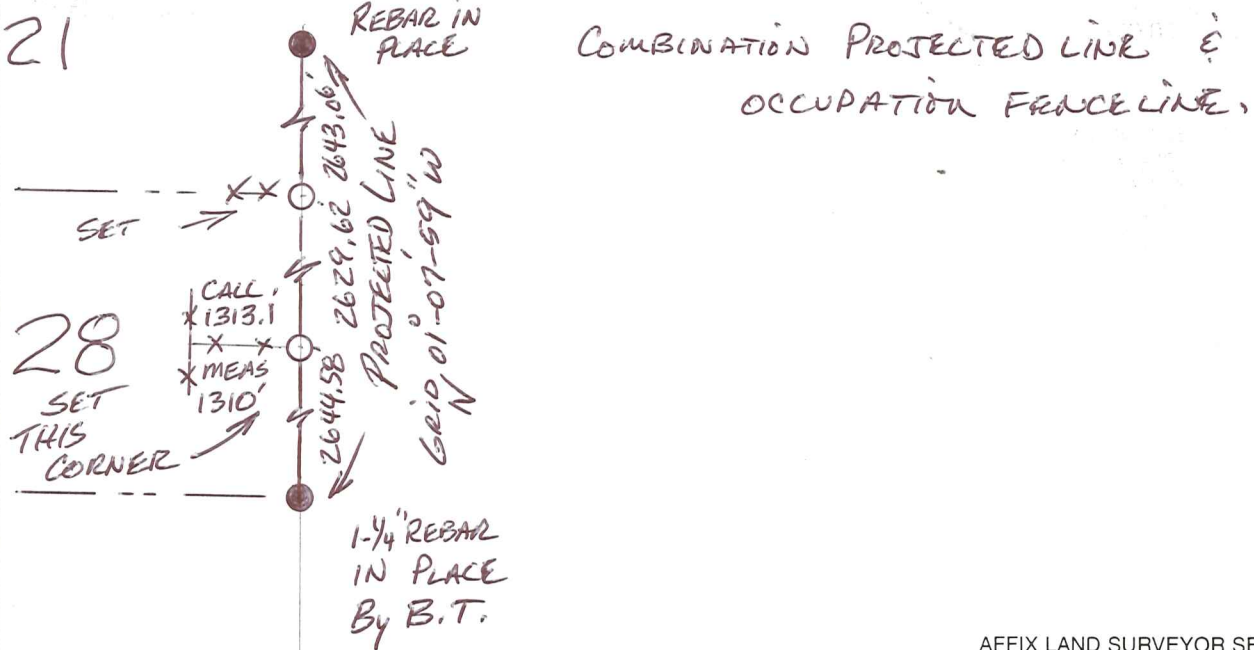
(E) DESCRIBE ANY MATERIAL DISCREPANCY BETWEEN THE LOCATION OF THE CORNER AS RESTORED OR REESTABLISHED AND THE LOCATION OF THAT CORNER AS PREVIOUSLY RESTORED OR REESTABLISHED BY DISTANCE AND DIRECTION. SHOW THE DISCREPANCY ON THE PLAN VIEW DRAWING UNDER (D), ABOVE. SHOW THE DISTANCES BETWEEN THE CORNER AS PREVIOUSLY RESTORED OR REESTABLISHED AND (1) THE CORNER AS RESTORED OR REESTABLISHED, AND (2) TO AT LEAST 2 OF THE WITNESS MONUMENTS AS SHOWN ON THE DRAWING IN (D), ABOVE.

N/A

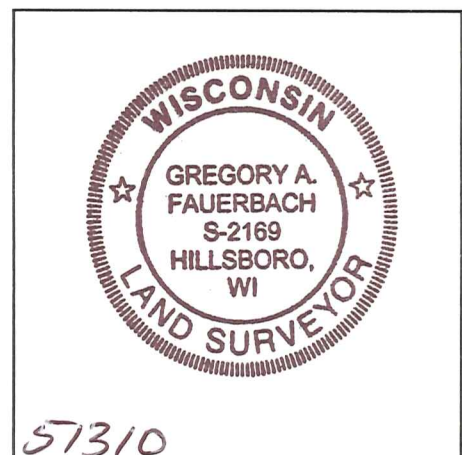
(F) WAS THE CORNER RESTORED THROUGH ACCEPTANCE OF (1) AN OBLITERATED EVIDENCE LOCATION, OR (2) A FOUND PERPETUATED LOCATION?

PERPETUATION E-W FENCELINE

(G & H) WAS THE CORNER REESTABLISHED THROUGH LOST CORNER PROPORTIONATE METHODS? IF SO SHOW THE METHOD, INCLUDING THE DIRECTION AND DISTANCES TO OTHER PUBLIC LAND SURVEY CORNERS USED AS EVIDENCE OR USED FOR PROPORTIONING IN DETERMINING THE CORNER LOCATION.



AFFIX LAND SURVEYOR SEAL



(I) I, Gregory A. Fauerbach CERTIFY THAT THE LOCATION SHOWN ON THIS RECORD WAS DETERMINED BY ME OR UNDER MY DIRECTION AND CONTROL AND THAT THIS U.S. PUBLIC LAND SURVEY MONUMENT RECORD IS CORRECT AND COMPLETE TO THE BEST OF MY KNOWLEDGE AND BELIEF.

Gregory A. Fauerbach 5-10-10
SIGNATURE DATE