

VERNON COUNTY CERTIFIED U.S. PUBLIC LAND SURVEY MONUMENT RECORD

DATUM: NAD 83 (2007)	VERNON COUNTY COORDINATES	
CONTROL: COMBINATION OF GPS AND CONVENTIONAL FIELD CONTROL	NORTH	
	EAST	

*THE SOUTH QUARTER CORNER OF SECTION 28
TOWN 13 NORTH, RANGE 1 WEST, TOWN OF
UNION, VERNON COUNTY, WISCONSIN.*

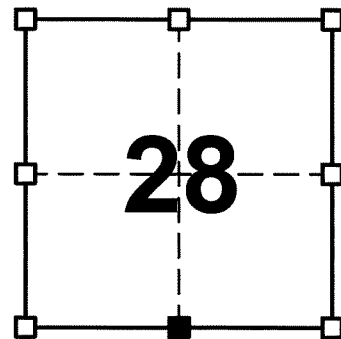
(A) IDENTIFY THE CORNER BY REFERENCE
TO THE U.S. PUBLIC LAND SURVEY SYSTEM

■ = CORNER MONUMENT RESTORED

WITNESS TO CORNER LOCATION:

THEODORE J. GREENHECK

TODD T. RUMMLER

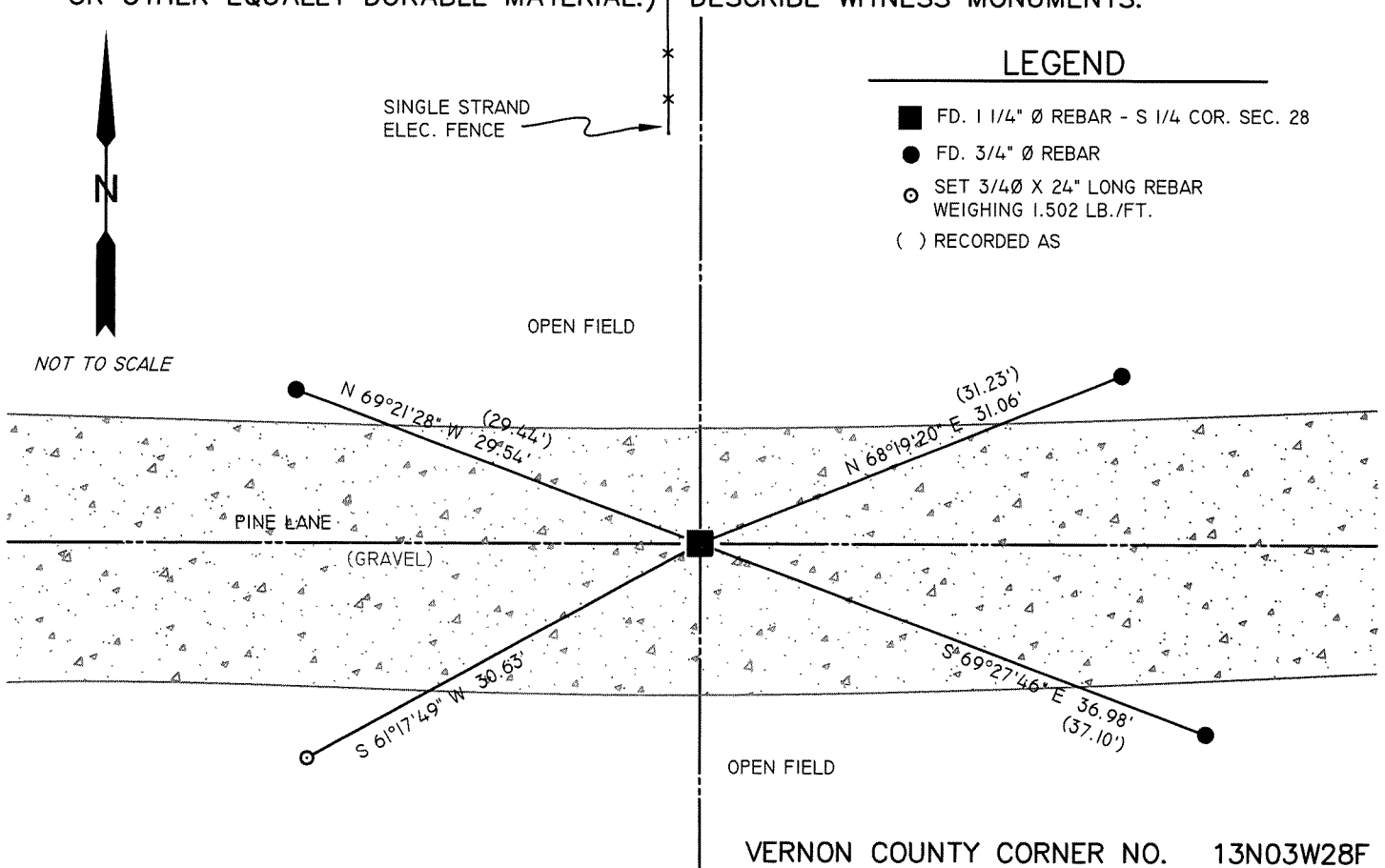


SECTION 28
TOWN 13 NORTH
RANGE 1 WEST

(B) DESCRIBE ANY RECORD EVIDENCE, MONUMENT EVIDENCE, OCCUPATIONAL EVIDENCE, TESTIMONIAL EVIDENCE OR ANY OTHER MATERIAL EVIDENCE YOU CONSIDERED, AND WHETHER THE MONUMENT WAS FOUND OR PLACED.

I FOUND A 1 1/4" DIAMETER REBAR ABOUT 1/2 FOOT BELOW THE GRAVEL SURFACE OF PINE LANE AND APPROXIMATELY 2 FEET NORTH OF THE TRAVELED CENTERLINE. THIS REBAR WAS PREVIOUSLY SET BY RICHARD T. BLAKESLEE, R.L.S - 1614 AND IS SHOWN ON HIS TIE SHEET DATED DECEMBER 05, 2000. ONE OF BLAKESLEE'S TIES WAS DESTROYED, SO I SET A NEW TIE. I ALSO LOCATED BLAKESLEE'S 3 REMAINING TIES. I DROVE ALL TIES DOWN 12"± BELOW GRADE FOR PROTECTION.

(C) IN THE PLAN VIEW DRAWING BELOW, PROVIDE REFERENCE TIES TO AT LEAST 4 WITNESS MONUMENTS OR, IF THE LOCATION IS WITHIN A MUNICIPALITY, TO AT LEAST 2 WITNESS MONUMENTS. (WITNESS MONUMENTS SHALL BE MADE ON CONCRETE, NATURAL STONE, IRON, OR OTHER EQUALLY DURABLE MATERIAL.) DESCRIBE WITNESS MONUMENTS.



- (D) DESCRIBE ANY MATERIAL DISCREPANCY BETWEEN THE LOCATION OF THE CORNER AS RESTORED OR REESTABLISHED AND THE LOCATION OF THAT CORNER AS PREVIOUSLY RESTORED OR REESTABLISHED BY DISTANCE AND DIRECTION. SHOW THE DISCREPANCY ON THE PLAN VIEW DRAWING UNDER (C), ABOVE. SHOW THE DISTANCES BETWEEN THE CORNER AS PREVIOUSLY RESTORED OR REESTABLISHED AND (1) THE CORNER AS RESTORED OR REESTABLISHED, AND (2) TO AT LEAST 2 OF THE WITNESS MONUMENTS AS SHOWN ON THE DRAWING IN (C), ABOVE.

NONE

- (E) WAS THE CORNER RESTORED THROUGH ACCEPTANCE OF (1) AN OBLITERATED EVIDENCE LOCATION, OR (2) A FOUND PERPETUATED LOCATION?


2.) A FOUND PERPETUATED LOCATION

- (F & G) WAS THE CORNER REESTABLISHED THROUGH LOST CORNER PROPORTIONATE METHODS? IF SO SHOW THE METHOD, INCLUDING THE DIRECTION AND DISTANCED TO OTHER PUBLIC LAND SURVEY CORNERS USED AS EVIDENCE OR USED FOR PROPORTIONING IN DETERMINING THE CORNER LOCATION.

NO.

AFFIX LAND SURVEYOR SEAL

- (H) I, THEODORE J. GREENHECK, RLS-2431 CERTIFY THAT THE CORNER LOCATION SHOWN ON THIS RECORD WAS DETERMINED BY ME OR UNDER MY DIRECTION AND CONTROL AND THAT THIS U.S. PUBLIC LAND SURVEY MONUMENT RECORD IS CORRECT AND COMPLETE TO THE BEST OF MY KNOWLEDGE AND BELIEF.


SIGNATURE

01-20-2010
DATE



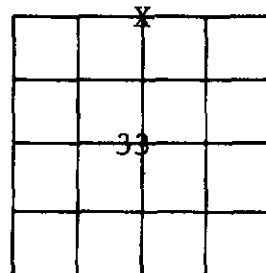
Government Land Corner Certificate

TYPE OF MONUMENT: 1 1/4" x 30" Re-bar set ELEVATION - M.S.L. DATUM:
STATE PLANE COORDINATES: N THETA ANGLE:
Wis. South Zone E FIELD BOOK: PAGE

Basis for Monument Location

Use reverse side if necessary. Show info such as: History of corner, with reference to Vol. and page, dates, surveyor; exact description of monument found; if location computed, by taped or EDM traverse; landowner remarks, witnesses, etc.

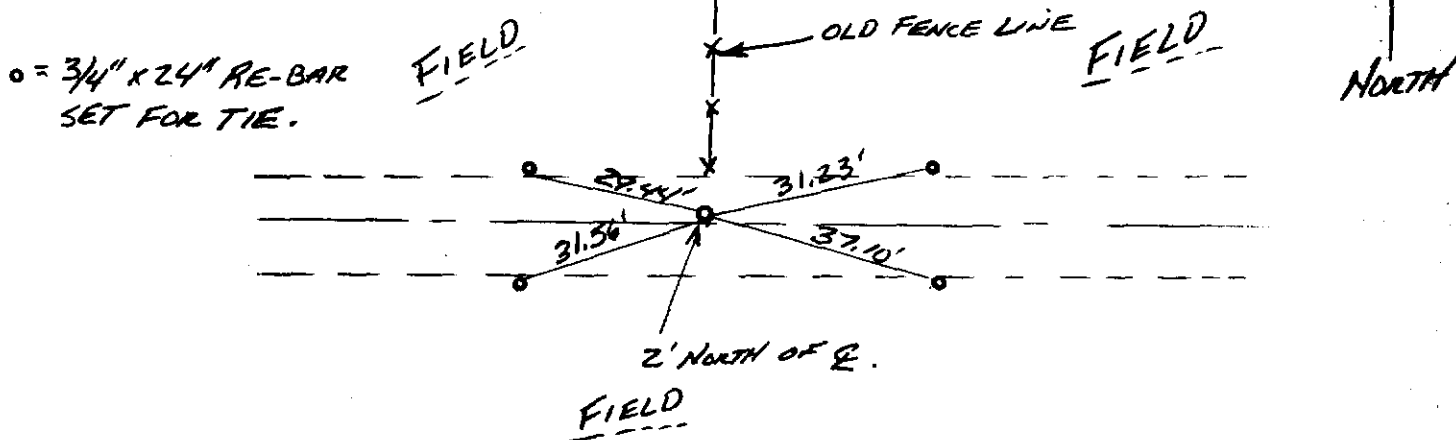
Researched Gov't Notes and all Vernon County Survey Records. County Surveyor Wm. Klower subdivided section 28 in 1890 as recorded in entry No. 478 of Vernon County Survey Records. At that time the original Gov't corner was still there. The entire area around this corner has been disturbed except for an old fence line going North. We set this corner on line between the Northeast and Northwest corners of Section 33 which fits the old fence line going North perfectly.



LOCATION (Indicated by 'X')
CITY, VILLAGE or TOWN Union
SECTION 33
TOWN T13N
RANGE R1W
DRAFTED BY Richard Blakeslee.
FIELD CREW Blakeslee & Murphy

TIE SKETCH

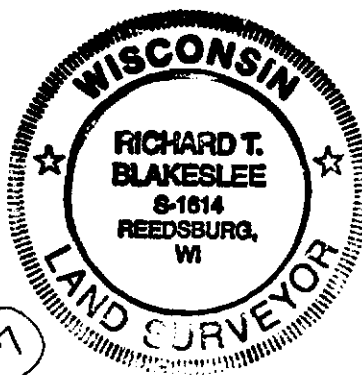
Show at least four ties. Also, fence lines, E of roads, and any other helpful factors and features.



CORNER MAINTENANCE INFO

SEAL:

Table with 3 columns and 6 rows for corner maintenance info.



SEAL: CERTIFIED CORRECT:

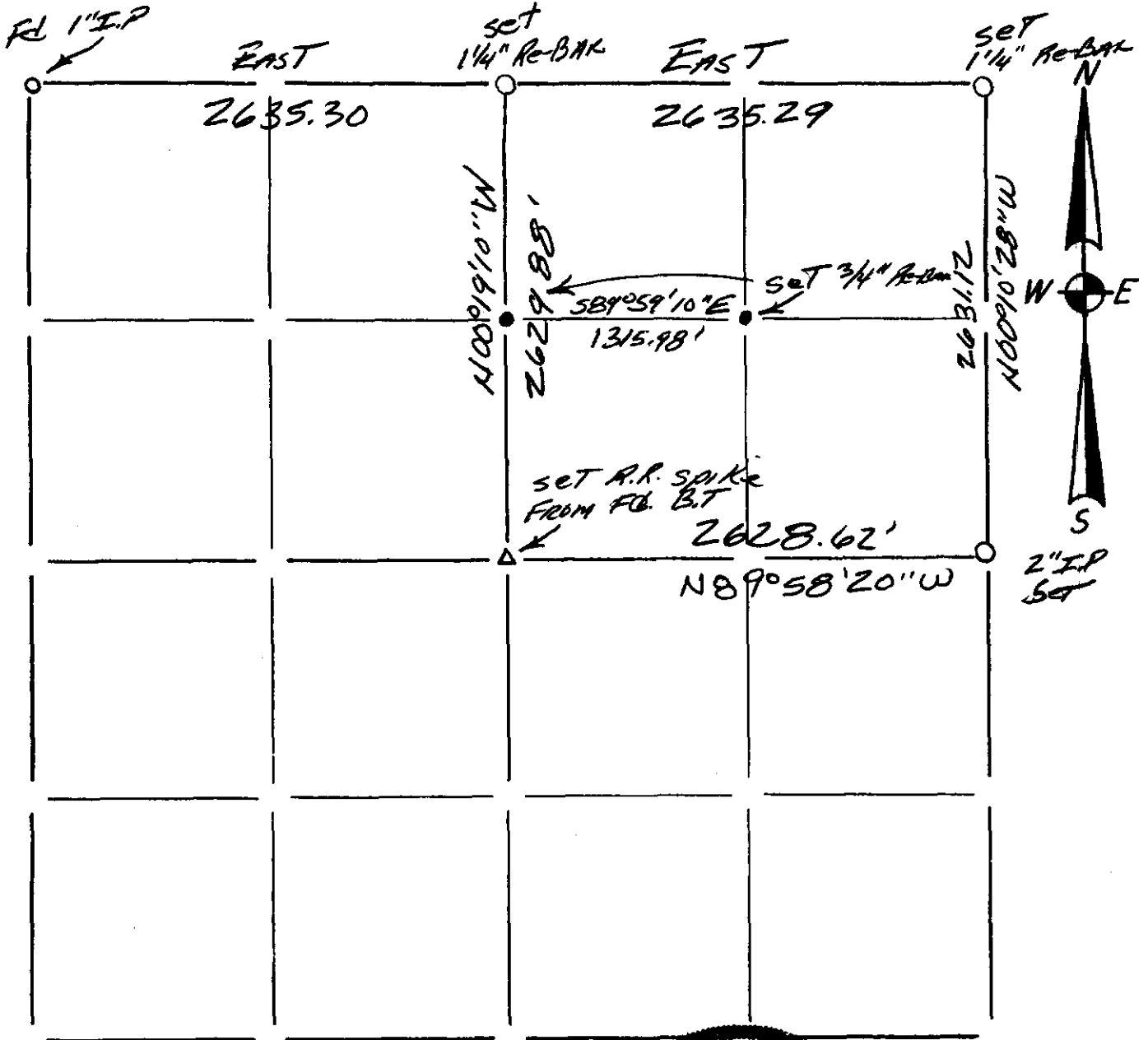
Signature of Richard T. Blakeslee, Registered Land Surveyor, DATE: 12/5/00

17

For Co. Surveyor Filing Use -> CORNER NO.

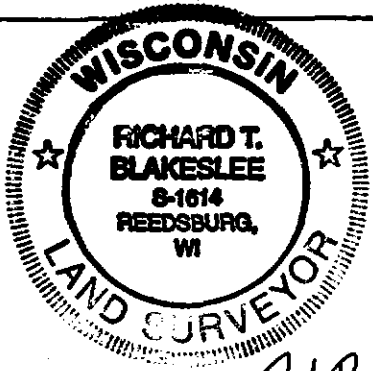
Section Summary and Index

DEC 12 2000
 33 - 13 - 1W
 Section Town Range



LEGEND

- - Harrison cast iron monument.
- - Stone or concrete monument.
- - Other _____
- _____
- _____
- _____



R. T. Blakeslee
 12/05/00
 Summary for
 Pgs. 167-18