

# U.S. PUBLIC LAND SURVEY MONUMENT RECORD

SECTION 27, TOWN 13 NORTH, RANGE 1 WEST.

INSTRUCTIONS: THIS RECORD SHALL SHOW THE LOCATION OF THE CORNER AND SHALL INCLUDE ALL OF THE FOLLOWING ELEMENTS (A-I).

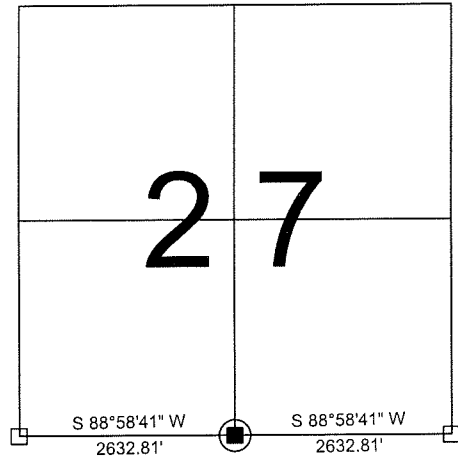
(A) IDENTIFY THE CORNER LOCATION BY REFERENCE TO THE U.S. PUBLIC LAND SURVEY SYSTEM.

■ = REFERENCED CORNER (LUNDE MONUMENT)

WITNESSES TO CORNER LOCATION:  
SCOTT D. WARNER  
TERRY L. CORNELL

VERNON COUNTY COORDINATES

NORTHING: 153417.558  
EASTING: 810019.607



(B) DESCRIBE ANY RECORD EVIDENCE, MONUMENT EVIDENCE, OCCUPATIONAL EVIDENCE, TESTIMONIAL EVIDENCE OR ANY OTHER MATERIAL EVIDENCE YOU CONSIDERED, AND WHETHER THE MONUMENT WAS FOUND OR PLACED.

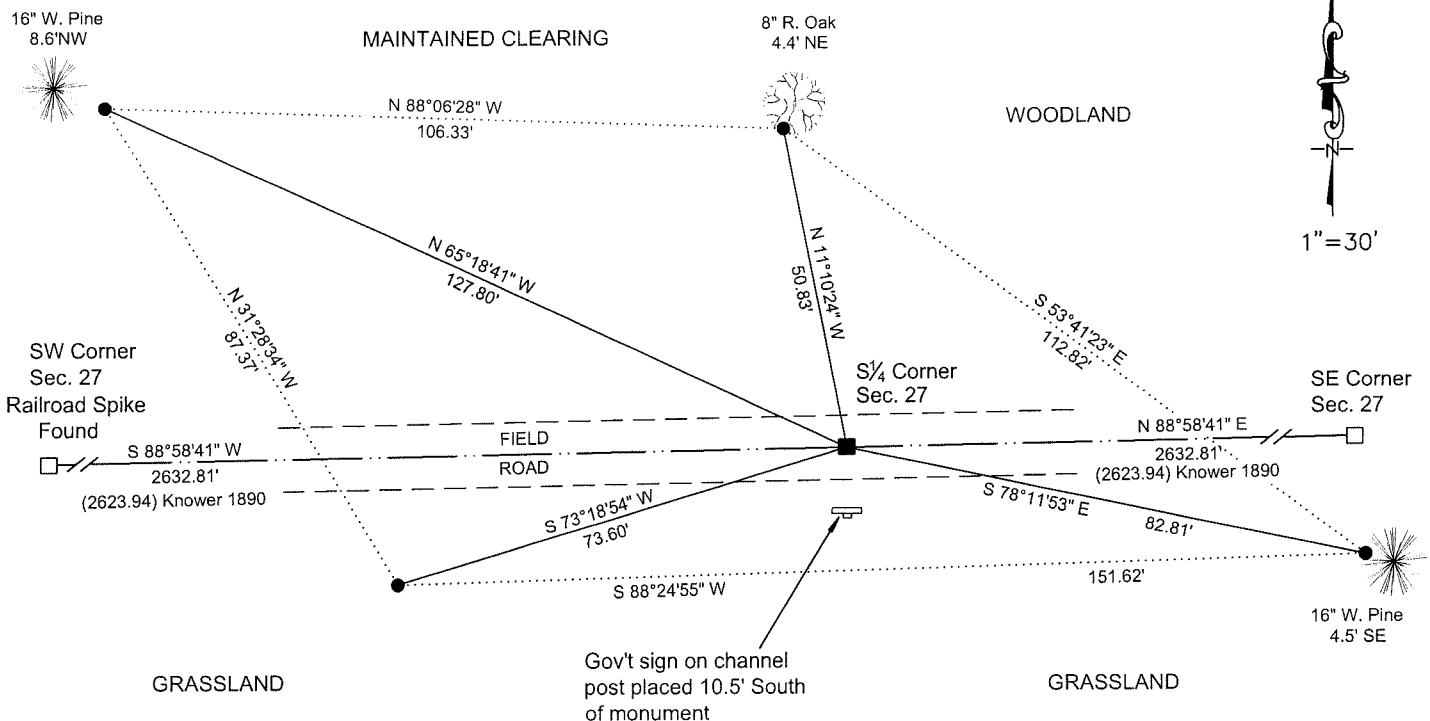
JANUARY 1846 - ESTABLISHED BY ALFRED L. BROWN;  
FEBRUARY 1890 - Wm. KNOWER IDENTIFIES THIS CORNER AS LOST;  
I DID NOT FIND EVIDENCE OF THE ORIGINAL POST OR BEARING TREES;  
I PLACED A LUNDE MONUMENT AT THE MIDPOINT BETWEEN MONUMENTED SOUTHWEST AND SOUTHEAST CORNERS OF SECTION 27, AND PLACED FOUR (4) REFERENCE MONUMENTS AS SHOWN IN THE DRAWING BELOW.

(C) IN THE PLAN VIEW DRAWING BELOW, PROVIDE REFERENCE TIES TO AT LEAST 4 WITNESS MONUMENTS OR, IF THE LOCATION IS WITHIN A MUNICIPALITY, TO AT LEAST 2 WITNESS MONUMENTS. (WITNESS MONUMENTS SHALL BE MADE OF CONCRETE, NATURAL STONE, IRON, OR OTHER EQUALLY DURABLE MATERIAL). DESCRIBE WITNESS MONUMENTS.

(D) SHOW A PLAN VIEW DRAWING, DEPICTING THE RELEVANT MONUMENTS AND REFERENCE TIES, WHICH IS SUFFICIENTLY DETAILED TO RELOCATE THE MONUMENT IF IT IS DISTURBED.

### LEGEND

- = LUNDE MONUMENT PLACED
- = 1"x 24" IRON PIPE PLACED
- = LUNDE MONUMENT FOUND
- Unless otherwise noted.



(E) DESCRIBE ANY MATERIAL DISCREPANCY BETWEEN THE LOCATION OF THE CORNER AS RESTORED OR REESTABLISHED AND THE LOCATION OF THAT CORNER AS PREVIOUSLY RESTORED OR REESTABLISHED BY DISTANCE AND DIRECTION. SHOW THE DISCREPANCY ON THE PLAN VIEW DRAWING UNDER (D), ABOVE. SHOW THE DISTANCES BETWEEN THE CORNER AS PREVIOUSLY RESTORED OR REESTABLISHED AND (1) THE CORNER AS RESTORED OR REESTABLISHED, AND (2) TO AT LEAST 2 OF THE WITNESS MONUMENTS AS SHOWN ON THE DRAWING IN (D), ABOVE.

NO DISCREPANCIES.

(F) WAS THE CORNER RESTORED THROUGH ACCEPTANCE OF (1) AN OBLITERATED EVIDENCE LOCATION, OR (2) A FOUND PERPETUATED LOCATION?

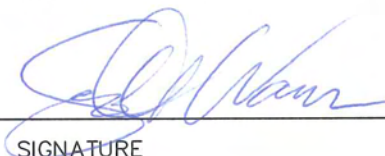
NO.

(G & H) WAS THE CORNER REESTABLISHED THROUGH LOST CORNER PROPORTIONATE METHODS? IF SO, SHOW THE METHOD, INCLUDING THE DIRECTIONS AND DISTANCES TO OTHER PUBLIC LAND SURVEY CORNERS USED AS EVIDENCE OR USED FOR PROPORTIONING IN DETERMINING THE CORNER LOCATION.

MIDPOINT OF SOUTH LINE OF SECTION 27. SEE NOTES AND DRAWING ON SHEET 1.

AFFIX LAND SURVEYOR SEAL

(I) I, SCOTT D. WARNER, CERTIFY THAT THE CORNER LOCATION SHOWN ON THIS RECORD WAS DETERMINED BY ME OR UNDER MY DIRECTION AND CONTROL AND THAT THIS U.S. PUBLIC LAND SURVEY MONUMENT RECORD IS CORRECT AND COMPLETE TO THE BEST OF MY KNOWLEDGE AND BELIEF.



02-21-2014

SIGNATURE

DATE



# VERNON COUNTY COORDINATE FORM

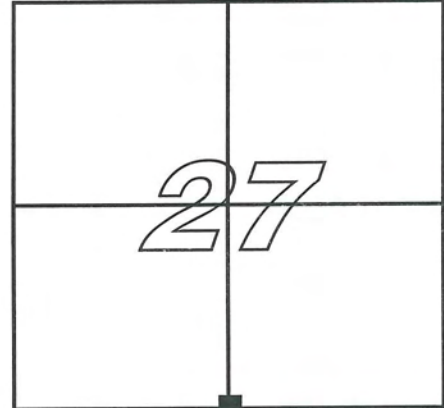
"As An Addendum To"

## A CERTIFIED U.S. PUBLIC LAND SURVEY MONUMENT RECORD

INSTRUCTIONS: THIS RECORD FORM SHOULD BE USED WHEN COORDINATES ARE PROVIDED FOR A PUBLIC LAND SURVEY CORNER AND SHALL INCLUDE ALL OF THE FOLLOWING ELEMENTS (A-D)

(A) IDENTIFY THE CORNER BY REFERENCE TO THE U.S. PUBLIC LAND SURVEY SYSTEM IN DIAGRAM AT RIGHT

■ = CORNER MONUMENT



T 13 N, R 1 W

(B) COORDINATES:

GEOGRAPHIC (Degrees Minutes Decimal Seconds to 4 places):

LATITUDE: 43° 34' 03.7253"

LONGITUDE: 90° 28' 53.1728"

ELLIPSOID HT (m): \_\_\_\_\_

HORIZONTAL DATUM: NAD 1983 (2007)

ORTHOMETRIC HT (U.S. ft): \_\_\_\_\_

VERTICAL DATUM: \_\_\_\_\_

VERNON COUNTY (U.S. FEET)

Coord. Quality (+/-)

NORTHING (Y): 153417.558 \_\_\_\_\_

EASTING (X): 810019.607 \_\_\_\_\_

METHOD USED TO COMPUTE COORDINATES (check and complete as applicable):

RTK Observations     Static Baselines     OPUS Solution (attach copy of OPUS report)

Combination of conventional procedures with GPS observations to set temporary control

Was a Least Squares Adjustment Used to Compute Coordinate? No

For Non-OPUS Based Solutions, List the Control Stations Used for Coordinate Computations (a minimum of 2 different control stations or 2 different time combinations from the same control station are required):

Obs. #	Control Station Name	Station Coordinates (Lat/Long)	Date	Time
1	Union C GPS	43° 35' 40.91250" / 90° 29' 24.76793"	11/21/13	09:15
2-5	Union C GPS	43° 35' 40.91250" / 90° 29' 24.76793"	12/17/13	09:53-09:55

\* Please List Additional Control Stations Used on Back of Form

When a direct observation of the corner is not possible, and a combination of different GPS and/or conventional procedures must be used to determine coordinate values, provide a brief description of your procedures on the back of form. (SEE BACK OF FORM FOR DETAILS)

(C) REASON FOR COORDINATE SUBMITTAL (check one):

Being Filed With a New U.S. PLS Monument Record

To Correct the Coordinates Listed on a Previously Filed PLS Monument Record

To Provide Coordinates for a Previously Filed PLS Monument Record without Coordinates

To Provide Supplemental Coordinates for a Previously Filed PLS Monument Record

R.L.S. & DATE OF PLS MONUMENT RECORD: \_\_\_\_\_

(D) AGENT(S) PERFORMING GPS OBSERVATIONS & COORDINATE COMPUTATION

1) Scott D. Warner

2) Terry L. Cornell

I, SCOTT D. WARNER, R.L.S. 2524, REGISTERED LAND SURVEYOR, CERTIFY THAT THE COORDINATES PROVIDED ON THIS RECORD WERE DETERMINED BY ME OR UNDER MY DIRECTION AND CONTROL AND THAT THIS COORDINATE SUBMISSION FORM IS CORRECT AND COMPLETE TO THE BEST OF MY KNOWLEDGE AND BELIEF.

SIGNATURE

02-21-2014  
DATE

Seal

