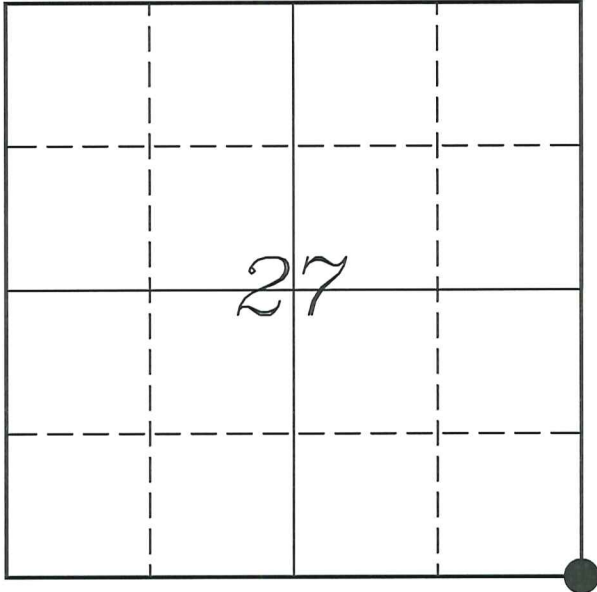


**U. S. PUBLIC LAND SURVEY MONUMENT RECORD
MAINTENANCE RECORD**

**SECTION 27, T13N, R1W, TOWN OF UNION
VERNON COUNTY, WISCONSIN**



LOCATION OF LANDMARK

Witnesses: Laurence E Johns III

Date: 11 April 2022

VERNON COUNTY COORDINATE SYSTEM	
Northing	153463.663
Easting	812652.167
Datum	NAD 1983 (2011)
Elevation	
Datum	
TYPE OF LANDMARK:	
Set 1 1/4" x 18" Iron Rod	
BEARINGS ARE REFERENCED TO:	
Vernon County Coordinates (Survey Grade)	

Describe or show any material discrepancy between the location of the restored corner and that of the corner previously restored or re-established.

The last monument record on file was from Nicholas Jennings and dated 3/18/2005, in which he replaced a 1" iron pipe with a Lunde monument.

Terry Cornell found a 1" iron pipe at this corner during a survey on 12/11/2000.

Scott Warner found a Lunde monument during a survey on 12/19/2013.

Describe any record evidence, monument evidence, testimonial evidence or any other material evidence you considered and whether the monument was found or restored through acceptance of an obliterated evidence location.

I was informed by the Town of Union patrolman, in November 2021, that during grading operations on Muncie Road that the corner was unintentionally pulled up by the grader.

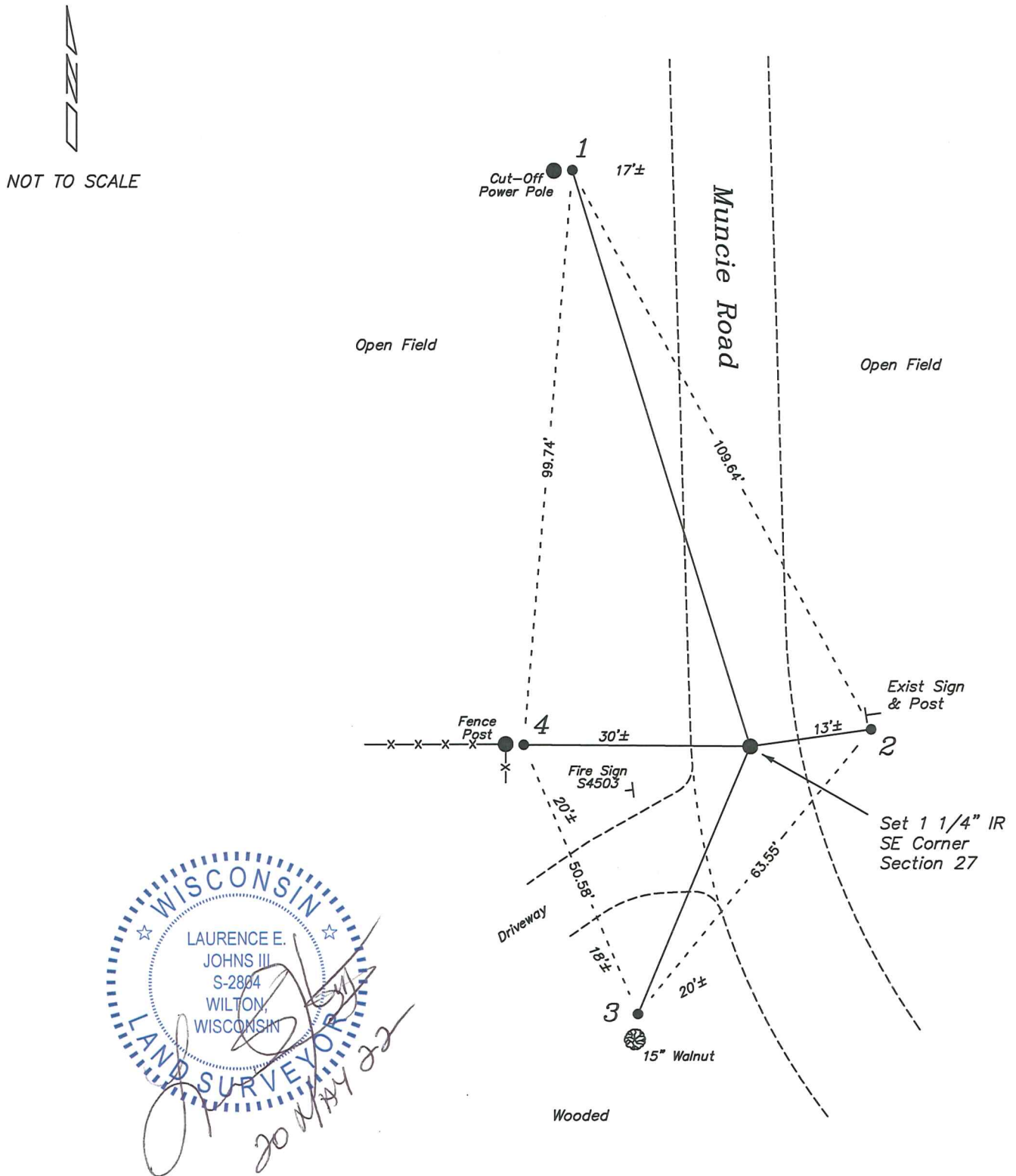
Due to the frost already starting to form in the road, I waited til the spring of 2022 to complete the maintenance on this corner.

I found 3 of the ties shown on Jennings tie sheet. Using those ties I re-established the position of this corner and placed an 1 1/4" iron rod in the center of Muncie Road.

RECORD OF DURABLE WITNESS MONUMENTS

NO	DESCRIPTION	BEARING	DISTANCE
1	Set 3/4" x 18" Iron Rod 1' East of Old Cut-Off Power Pole	N 17°04'19" W	104.34'
2	Existing 1 1/4" Iron Rod 1' South of Warning Sign	N 81°59'55" E (N 82°29'10" E)	21.04' (21.08')
3	Existing 1 1/4" Iron Rod 2' North of 15" Walnut	S 22°45'18" W (S 22°38'16" W)	50.16' (50.40')
4	Existing 1 1/4" Iron Rod 1' East of Wood Fence Post	N 89°28'52" W (N 89°28'52" W)	39.05' (38.95')

PLAN VIEW DRAWING OF REFERENCE TIES



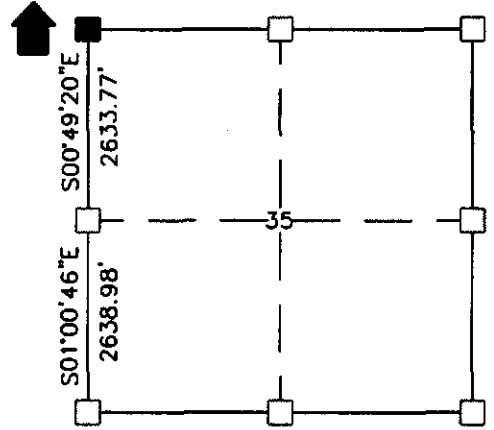
LAURENCE E. JOHNS III
 S-2804
 WILTON, WISCONSIN
 LAND SURVEYOR
 20 MAY 22

I, Laurence E Johns III PLS 2804, Professional Land Surveyor, hereby certify that the corner location shown on this record was determined by me or under my direction and control, and that this U.S. Public Land Survey Monument Record is correct and complete to the best of my knowledge and belief.

RECEIVED
 MAR 23 2005
 BY: Ks

VERNON COUNTY
 CERTIFIED U.S. PUBLIC LAND SURVEY MONUMENT RECORD

DATUM: NAD 83 (1991)	VERNON COUNTY COORDINATES	
CONTROL: COMBINATION OF GPS AND CONVENTIONAL FIELD CONTROL	NORTH	153464.520
	EAST	812651.998



■ = CORNER MONUMENT RESTORED
 SECTION 35
 TOWN 13 NORTH
 RANGE 1 ~~EAST~~/WEST

(A) IDENTIFY THE CORNER BY REFERENCE TO THE U.S. PUBLIC LAND SURVEY SYSTEM

■ = CORNER MONUMENT RESTORED

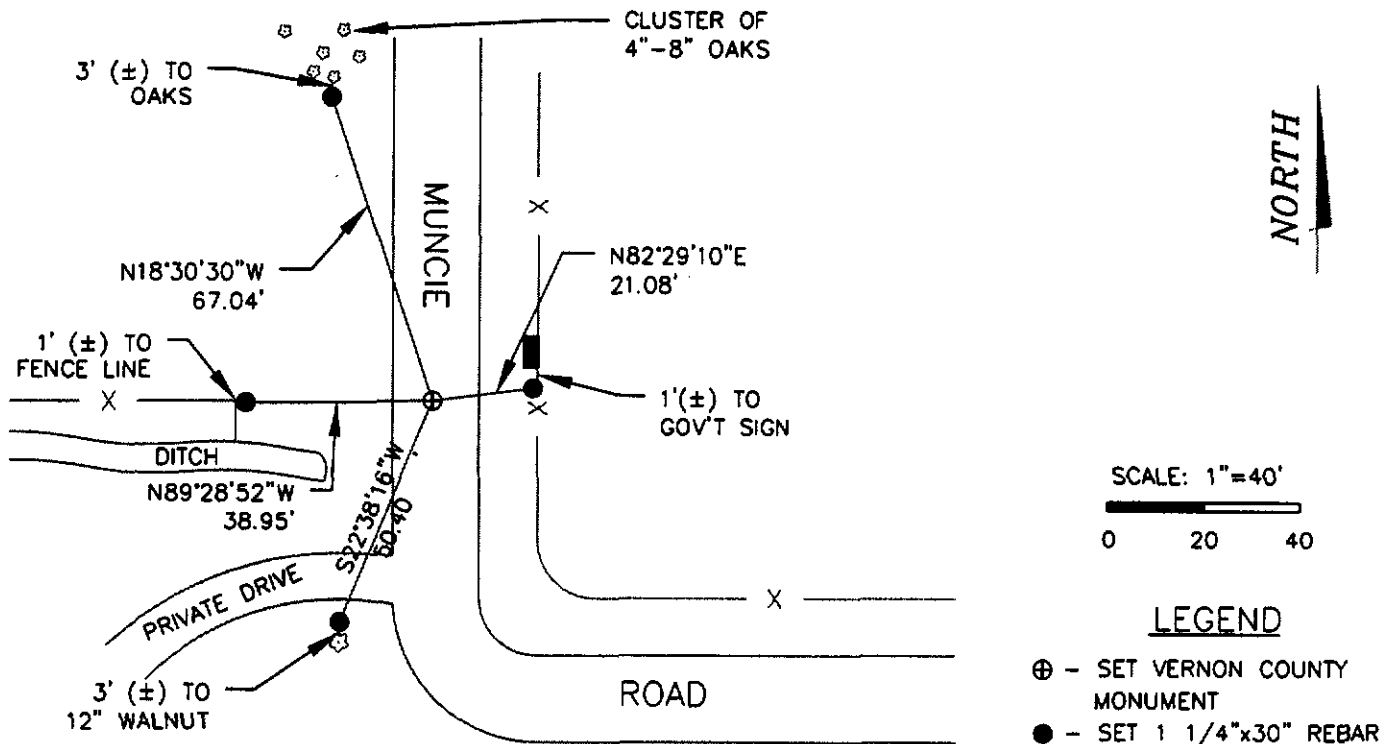
WITNESSES TO CORNER LOCATION

- 1) JEREMY KOSKIE
- 2) NICK JENNINGS
- 3)

(B) DESCRIBE ANY RECORD EVIDENCE, MONUMENT EVIDENCE, OCCUPATIONAL EVIDENCE, TESTIMONIAL EVIDENCE OR ANY OTHER MATERIAL EVIDENCE YOU CONSIDERED, AND WHETHER THE MONUMENT WAS FOUND OR PLACED.

FOUND 1" IRON PIPE BELOW CENTER OF ROAD SURFACE. FIT WELL WITH OCCUPATION WEST AND SOUTH. AGREED WITH PLAT OF SURVEY DONE BY CORNELL IN DECEMBER 2000. ACCEPTED CORNER LOCATION. REPLACED PIPE WITH VERNON COUNTY MONUMENT.

(C) IN THE PLAN VIEW DRAWING BELOW, PROVIDE REFERENCE TIES TO AT LEAST 4 WITNESS MONUMENTS OR, IF THE LOCATION IS WITHIN A MUNICIPALITY, TO AT LEAST 2 WITNESS MONUMENTS. (WITNESS MONUMENTS SHALL BE MADE OF CONCRETE, NATURAL STONE, IRON, OR OTHER EQUALLY DURABLE MATERIAL.) DESCRIBE WITNESS MONUMENTS.



SCALE: 1"=40'
 0 20 40

LEGEND
 ⊕ - SET VERNON COUNTY MONUMENT
 ● - SET 1 1/4"x30" REBAR

68A

(D) DESCRIBE ANY MATERIAL DISCREPANCY BETWEEN THE LOCATION OF THE CORNER AS RESTORED OR REESTABLISHED AND THE LOCATION OF THAT CORNER AS PREVIOUSLY RESTORED OR REESTABLISHED BY DISTANCE AND DIRECTION. SHOW THE DISCREPANCY ON THE PLAN VIEW DRAWING UNDER (C), ABOVE. SHOW THE DISTANCES BETWEEN THE CORNER AS PREVIOUSLY RESTORED OR REESTABLISHED AND (1) THE CORNER AS RESTORED OR REESTABLISHED, AND (2) TO AT LEAST 2 OF THE WITNESS MONUMENTS AS SHOWN ON THE DRAWING IN (C), ABOVE.

NONE

(E) WAS THE CORNER RESTORED THROUGH ACCEPTANCE OF (1) AN OBLITERATED EVIDENCE LOCATION, OR (2) A FOUND PERPETUATED LOCATION?

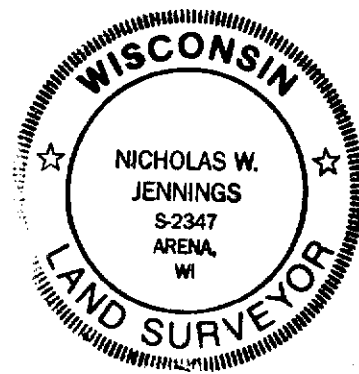
A FOUND PERPETUATED LOCATION

(F & G) WAS THE CORNER REESTABLISHED THROUGH LOST CORNER PROPORTIONATE METHODS? IF SO SHOW THE METHOD, INCLUDING THE DIRECTION AND DISTANCES TO OTHER PUBLIC LAND SURVEY CORNERS USED AS EVIDENCE OR USED FOR PROPORTIONING IN DETERMINING THE CORNER LOCATION.

NO

AFFIX LAND SURVEYOR SEAL

(H) I, NICHOLAS W. JENNINGS CERTIFY THAT THE LOCATION SHOWN ON THIS RECORD WAS DETERMINED BY ME OR UNDER MY DIRECTION AND CONTROL AND THAT THIS U.S. PUBLIC LAND SURVEY MONUMENT RECORD IS CORRECT AND COMPLETE TO THE BEST OF MY KNOWLEDGE AND BELIEF.



Nicholas W. Jennings March 18, 2005
SIGNATURE DATE

RECEIVED

JAN 17 2002

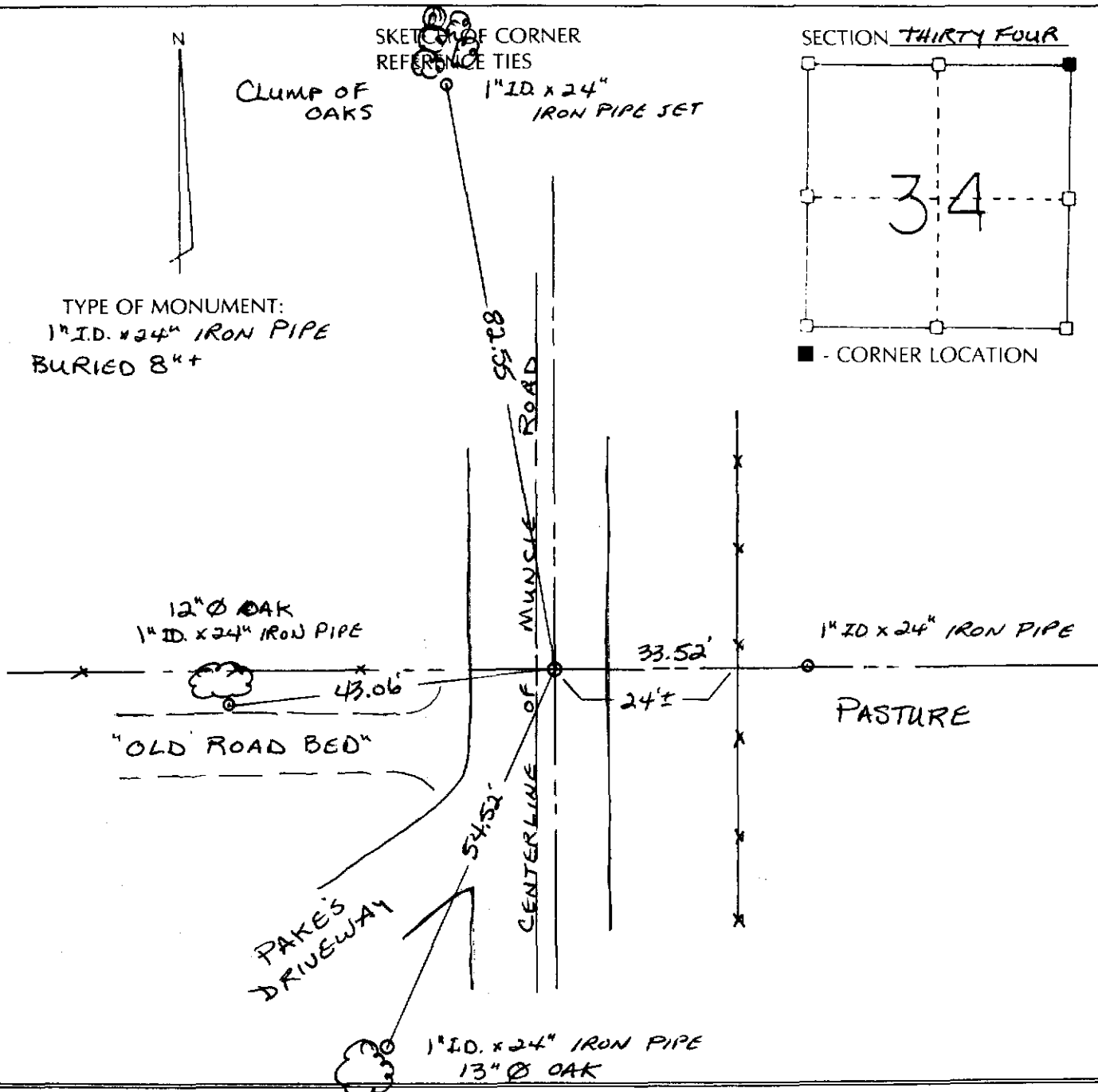
BY: m.m.

RECORD OF CORNER MONUMENTATION

NORTH EAST CORNER SECTION 34 TOWNSHIP 13 N RANGE 1 W VERNON COUNTY, WISCONSIN

STATE PLANE COORDINATES OF (Y) NORTH (X) EAST ELEVATION

HORIZONTAL DATUM: WISCONSIN STATE PLANE COORDINATE SYSTEM, SOUTH ZONE

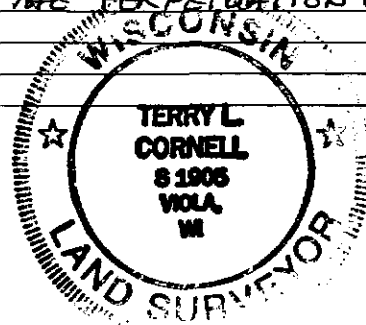


SURVEYOR'S CERTIFICATE (STATE OF WISCONSIN)

I HEREBY CERTIFY THAT I DID ESTABLISH THIS CORNER IN CONJUNCTION WITH A T-2, COM TRAVERSE OF THE SECTION WHILE PERFORMING A SURVEY FOR NORMAN PAKES ON OR ABOUT NOVEMBER 1994 AND AGAIN ON DECEMBER 2000. WE SET THE TIES SHOWN ABOVE FOR THE PERPETUATION OF SAID CORNER.

DATED THIS 17th DAY OF January 2002

Terryl L. Cornell REGISTERED LAND SURVEYOR S-1905



68