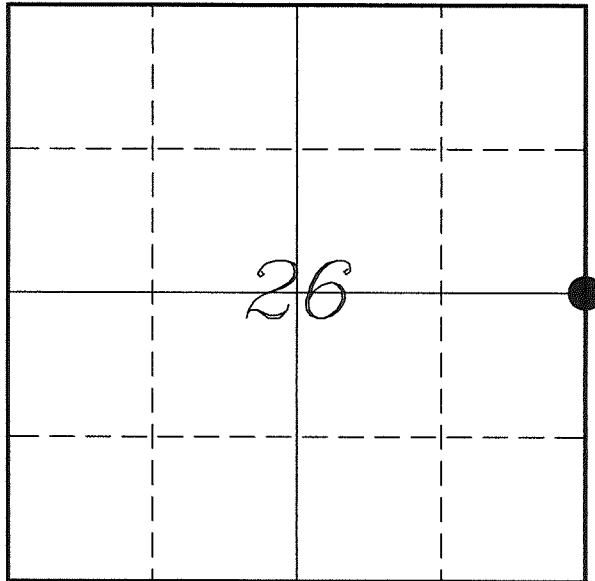


---

**U. S. PUBLIC LAND SURVEY MONUMENT RECORD**


---

**SECTION 26, T13N, R1W, TOWN OF UNION  
VERNON COUNTY, WISCONSIN**


*LOCATION OF LANDMARK*

Witnesses: Laurence E Johns III  
Al Hoff

Date: 10 May 2018

VERNON COUNTY COORDINATE SYSTEM	
Northing	156121.503
Easting	817875.481
Datum	NAD 1983 (2011)
Elevation	
Datum	
TYPE OF LANDMARK: Set Lunde Monument 4" Brass Capped Iron Pipe	
BEARINGS ARE REFERENCED TO: Vernon County Coordinates (Survey Grade)	

*Eagle Ridge Surveying*  
PO Box 213  
Wilton, Wisconsin

---

*Describe any record evidence, monument evidence, testimonial evidence or any other material evidence you considered and whether the monument was found or restored through acceptance of an obliterated evidence location.*

No bearing trees of record were located.

Found the Lunde Monument set by Zick. He apparently made no effort to find or search for evidence for this corner.

Knower's survey of 1879 has a complete breakdown of Section 25, and every fence I measured matching his survey.

I found an old fence corner in disrepair about 172 feet South of the location shown by Zick. Also, the fence is standing heading to the East just 100 feet to the East. When compared with measurements at center of section of other locations along the fence, I found the fence straight between the E 1/4 Corner of Section 25 and this corner.

The SE Corner of this section was subsequently moved by Fauerbach as compared to Zick's location. Also, Zick has used a location for the NE Corner that disagreed with a prior monument at a fence corner. Once these new locations were taken into account, this fence corner is located about 7' North and 4' East of the new mid-point.

Not sure what process Zick used to determine his corners in Section 25. But apparently they did not represent any occupation in the section.

I determined that Zick's location for this corner was incorrect and placed a Lunde Monument at the old occupation.

As per Vernon County policy, I removed the brass cap from the Lunde Monument set by Zick and left the base in place.

---

*Describe or show any material discrepancy between the location of the restored corner and that of the corner previously restored or re-established.*

Alfred L Brown established this corner in January 1846.

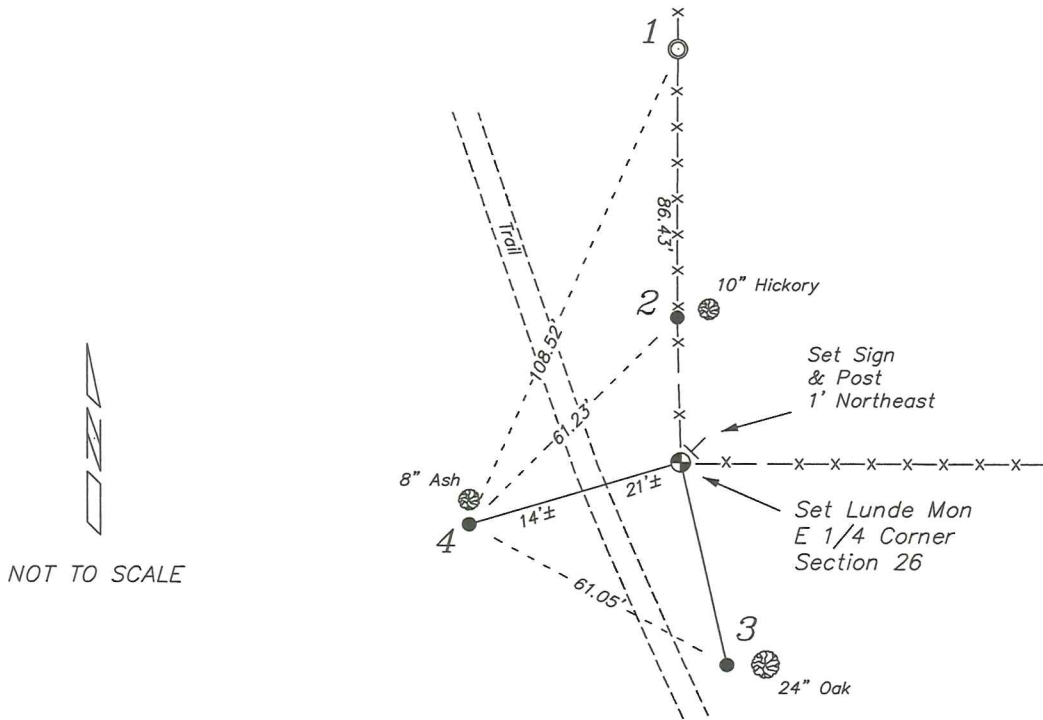
Wm Knower was at this corner, in June 1879, during a survey in Section 25. He shows this corner as the government corner.

Wm Knower was at this corner again, in Aug 1886, during a survey in Section 26. He shows finding the government corner from the previous survey.

Gary Zick was at this corner, in August 2006, during a survey in Section 25. He shows he set a vernon county monument at the mid-point between section corners.

## RECORD OF DURABLE WITNESS MONUMENTS

NO	DESCRIPTION	BEARING	DISTANCE
1	2" Iron Pipe <i>Previous Monument Set by Zick</i>	N 00°21'36" W	172.85'
2	Set 3/4" x 18" Iron Rod <i>In Fence - 2' West of a 10" Hickory</i>	N 01°17'38" W	30.29'
3	Set 3/4" x 18" Iron Rod <i>2' West of a 24" Oak</i>	S 12°47'22" E	43.38'
4	Set 3/4" x 18" Iron Rod <i>2' South of a 8" Ash</i>	S 73°29'47" W	45.85'



## PLAN VIEW DRAWING OF REFERENCE TIES

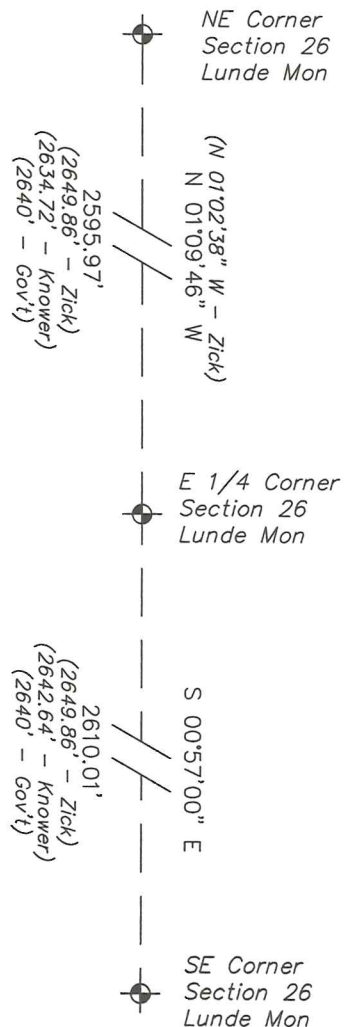
*Map Showing Distance And Direction To Other Public Land Survey Corners Used For Re-Establishing The Corner*



**Note:**

*Measurements were not made to this corner at this time.*

*Bearings and distances shown are based on recorded information and shown for reference.*



I, Laurence E Johns III PLS 2804, Professional Land Surveyor, hereby certify that the corner location shown on this record was determined by me or under my direction and control, and that this U.S. Public Land Survey Monument Record is correct and complete to the best of my knowledge and belief.