

VERNON COUNTY CERTIFIED U.S. PUBLIC LAND SURVEY MONUMENT RECORD

INSTRUCTIONS: THIS RECORD SHALL SHOW THE LOCATION OF THE CORNER AND SHALL INCLUDE ALL OF THE FOLLOWING ELEMENTS (A-I)

(A) IDENTIFY THE CORNER BY REFERENCE TO THE U.S. PUBLIC LAND SURVEY SYSTEM

■ = CORNER MONUMENT RESTORED

WITNESSES TO CORNER LOCATION:

- 1) Robert M. Lampman
- 2) Chad L. Crook
- 2) Jessica A. Zamor

GEOGRAPHIC COORDINATES - WGS84/GRS80 - NAD83(2007)

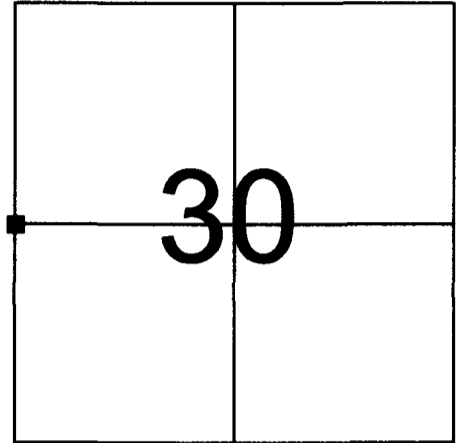
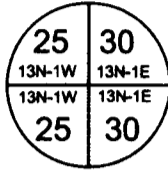
Lat: 43°34'31.31353" N

Lon: 90°25'54.49254" W

VERNON COUNTY COORDINATES - WISCRS - NAD83(2007) - SURVEY FEET

NORTHING: 156262.766'

EASTING: 823163.375'



SECTION 30
TOWN 13 NORTH, RANGE 1 EAST

(B) DESCRIBE ANY RECORD EVIDENCE, MONUMENT EVIDENCE, OCCUPATIONAL EVIDENCE, TESTIMONIAL EVIDENCE OR ANY OTHER MATERIAL EVIDENCE YOU CONSIDERED, AND WHETHER THE MONUMENT WAS FOUND OR PLACED.

No corner certificates were found on file for this corner. After reviewing available survey records, I came to the conclusion that there must be two survey monuments at this corner. One iron pipe monument as established by James Carroll in May 1995 and one Lunde Monument as shown by Gary Zick in August 2006. I visited the corner area on January 2, 2008 and found two survey monuments as expected. The discrepancy between monuments being 68.42 feet as shown below.

This is similar to the situation at the NW corner of Section 30, T13N, R1E. At said NW corner there is a 37.12 foot discrepancy between a 1-1/4 iron pipe monument set in 1992 by Terry Cornell and a Lunde Monument set in 2005 by Gary Zick. The Lunde being westerly of the iron pipe. There is a record corner certificate for the Lunde at the NW corner of Section 30, T13N, R1E. Gary Zick explains in the aforementioned corner certificate that said Lunde was placed in the east/west fence and on line between the W 1/4 Corner of Section 19 (T13N, R1E) and the SW Corner of Section 30 (T13N, R1E). I measured to occupied forty fences to the east and west of the NW Corner of Section 30, T13N, R1E. I found distances from said fences to the Lunde at said corner to match extraordinarily well with both original and resurvey distances. (See sketch on reverse.) Thus, I accepted the Lunde monument set by Gary Zick as the best available evidence of the NW corner Section 30, T13N, R1E.

The Lunde monument at found at the W 1/4 Corner of Section 30, T13N, R1E is consistent with the method utilized by Gary Zick in reestablishing the NW Corner of said Section 30. The Lunde monument found at the W 1/4 Corner of said Section 30 is in east/west occupation and within 0.35 feet of line between the NW and SW corners of said Section 30. I have accepted the Lunde monument found at the W 1/4 Corner of said Section 30 as the best available evidence of the original government corner location.

The sketch on reverse also includes measured distances along the West line of Section 30, T13N, R1E. The measured distances are not surprisingly shorter than those recorded by Knowler. The terrain is quite steep. However, as added verification of this corner location, the existing Lunde monument is within 1.5 feet of a proration of Knowler's measured distances.

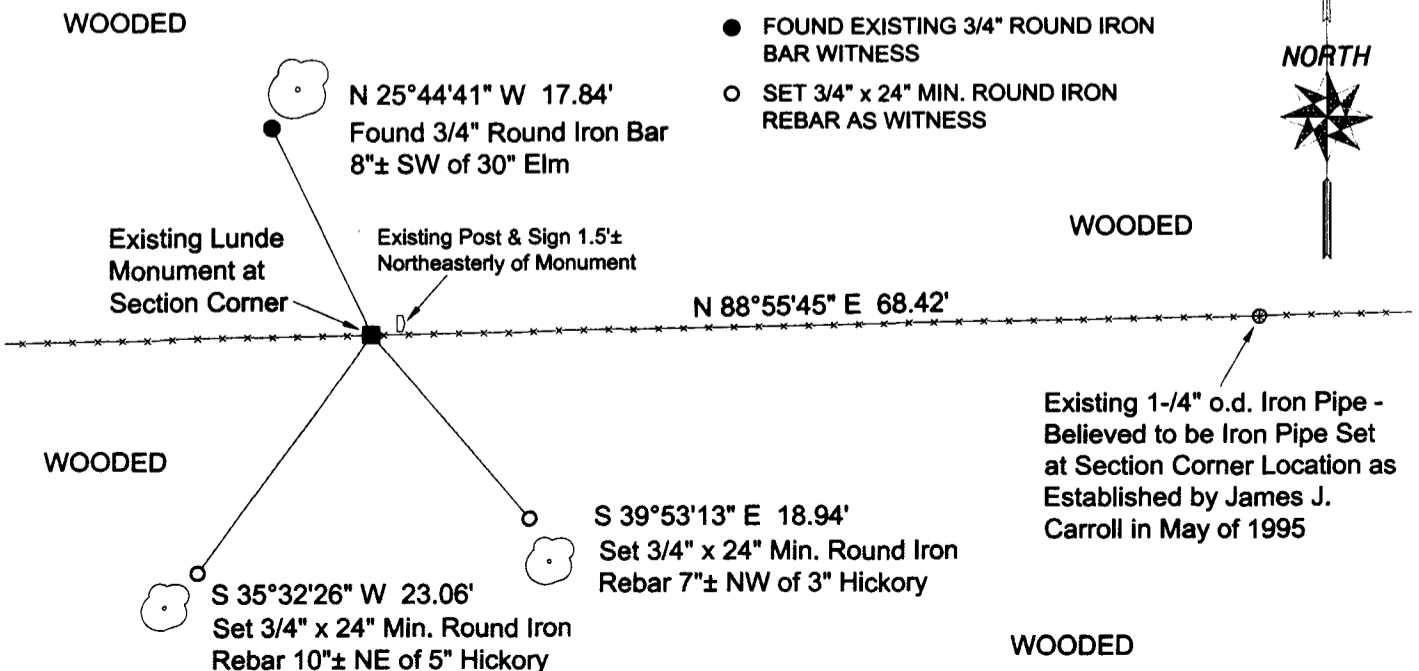
(C) IN THE PLAN VIEW DRAWING BELOW, PROVIDE REFERENCE TIES TO AT LEAST 4 WITNESS MONUMENTS OR, IF THE LOCATION IS WITHIN A MUNICIPALITY, TO AT LEAST 2 WITNESS MONUMENTS. (WITNESS MONUMENTS SHALL BE MADE OF CONCRETE, NATURAL STONE, IRON, OR OTHER EQUALLY DURABLE MATERIAL.) DESCRIBE WITNESS MONUMENTS.

(D) SHOW A PLAN VIEW DRAWING, DEPICTING THE RELEVANT MONUMENTS AND REFERENCE TIES, WHICH IS SUFFICIENTLY DETAILED TO ENABLE ACCURATE RELOCATION OF THE CORNER MONUMENT IF IT IS DISTURBED.

NOT TO SCALE

LEGEND

- EXISTING VERNON COUNTY LUNDE MONUMENT
- ⊗ FOUND EXISTING 1-1/4" O.D. ROUND IRON PIPE
- FOUND EXISTING 3/4" ROUND IRON BAR WITNESS
- SET 3/4" x 24" MIN. ROUND IRON REBAR AS WITNESS



(E) DESCRIBE ANY MATERIAL DISCREPANCY BETWEEN THE LOCATION OF THE CORNER AS RESTORED OR REESTABLISHED AND THE LOCATION OF THAT CORNER AS PREVIOUSLY RESTORED OR REESTABLISHED BY DISTANCE AND DIRECTION. SHOW THE DISCREPANCY ON THE PLAN VIEW DRAWING UNDER (D), ABOVE. SHOW THE DISTANCES BETWEEN THE CORNER AS PREVIOUSLY RESTORED OR REESTABLISHED AND (1) THE CORNER AS RESTORED OR REESTABLISHED, AND (2) TO AT LEAST 2 OF THE WITNESS MONUMENTS AS SHOWN ON THE DRAWING IN (D), ABOVE.

The corner location as shown hereon is in disagreement with a found existing 1-1/4" iron pipe monument. Said iron pipe monument believed to be a monument established by James J. Carroll in May of 1995. The amount of the discrepancy is shown on the reverse.

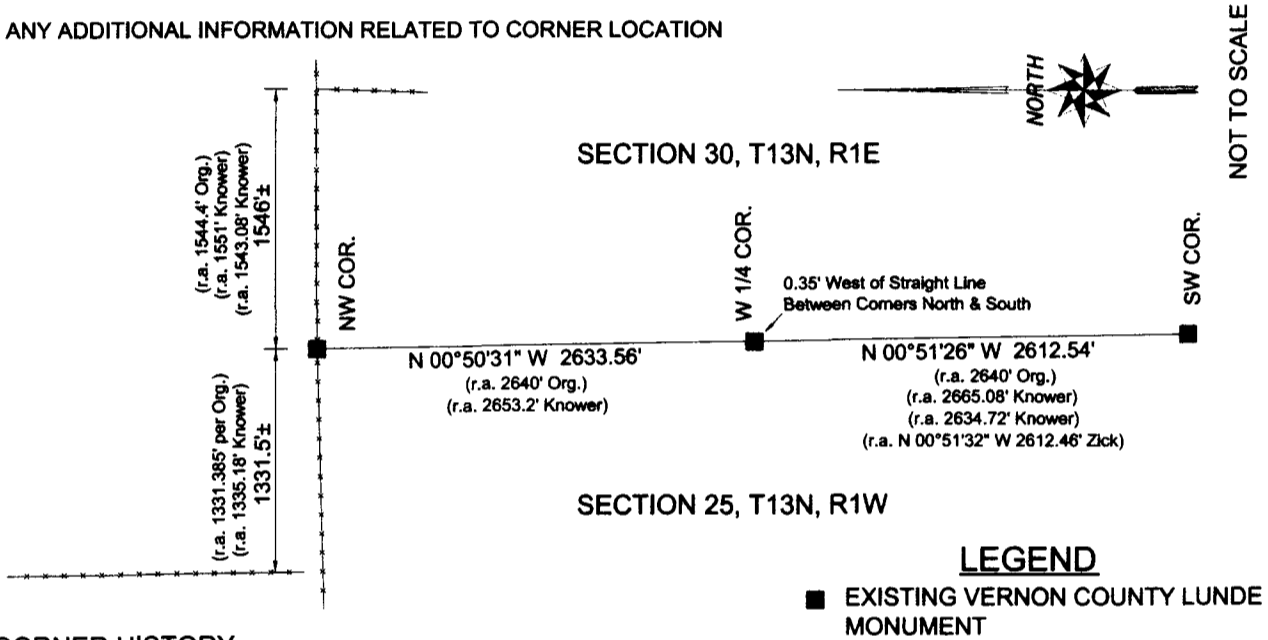
(F) WAS THE CORNER RESTORED THROUGH ACCEPTANCE OF (1) AN OBLITERATED EVIDENCE LOCATION, OR (2) A FOUND PERPETUATED LOCATION?

(2) A FOUND PERPETUATED LOCATION

(G & H) WAS THE CORNER REESTABLISHED THROUGH LOST CORNER PROPORTIONATE METHODS? IF SO SHOW THE METHOD, INCLUDING THE DIRECTIONS AND DISTANCES TO OTHER PUBLIC LAND SURVEY CORNERS USED AS EVIDENCE OR USED FOR PROPORTIONING IN DETERMINING THE CORNER LOCATION.

NO

(**) ANY ADDITIONAL INFORMATION RELATED TO CORNER LOCATION



CORNER HISTORY:

- Original Government corner established by J. Hathaway in 1839.
- W.H.Knower utilized this corner in a subdivision of Section 30, T13N, R1E dated May 7th-14th, 1878 and recorded as Vernon County Resurvey No. 118 in Volume 1, Page 101. This resurvey includes one additional witness for the corner.
- W.H.Knower utilized this corner in a subdivision of Section 25, T13N, R1W dated February 12th-21st, 1879 and recorded as Vernon County Resurvey No. 128 in Volume 1, Page 108.
- James J. Carroll shows a 1-1/4" x 24" iron pipe set at this corner on a survey prepared for Wilmar Holak and dated May 8th, 1995. (Sec 25, T13N, R1W)
- Patrick A. Carroll shows a 1-1/4" iron pipe found at this corner on a survey prepared for Ray Liska and dated September 28th, 2000. (Sec 25, T13N, R1W)
- Patrick A. Carroll shows a 1-1/4" iron pipe found at this corner on Vernon County Certified Survey Map #354, Volume 6, Page 238, Document No. 400169, dated October 18th, 2002. (Sec 25, T13N, R1W)
- Gary A. Zick shows a 1-1/4" iron pipe found at this corner on a Plat of Survey prepared for Bill Newman and dated July 28th, 2004. (Sec 30, T13N, R1E)
- Gary A. Zick shows an existing Vernon County monument at this corner on a Plat of Survey prepared for Brian Jacobs and dated August 14, 2006. (Sec 25, T13N, R1W)

AFFIX LAND SURVEYOR SEAL

(I) I, JESSICA A. ZAMOR, CERTIFY THAT THE LOCATION SHOWN ON THIS RECORD WAS DETERMINED BY ME OR UNDER MY DIRECTION AND CONTROL AND THAT THIS U.S. PUBLIC LAND SURVEY MONUMENT RECORD IS CORRECT AND COMPLETE TO THE BEST OF MY KNOWLEDGE AND BELIEF.

Jessica A. Zamor
SIGNATURE

1-05-2008
DATE

