

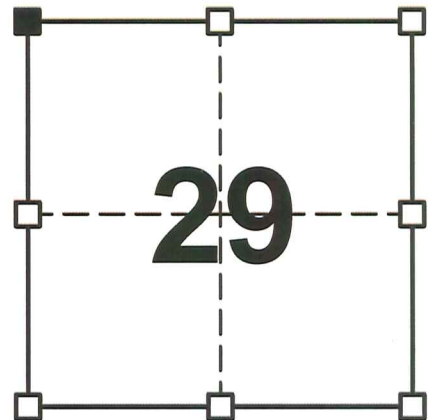
VERNON COUNTY CERTIFIED U.S. PUBLIC LAND SURVEY MONUMENT RECORD

DATUM: NAD 83 (2011) WISCRS	VERNON COUNTY COORDINATES	
CONTROL: COMBINATION OF GPS AND CONVENTIONAL FIELD CONTROL	NORTH	158,462.31'
	EAST	796,773.01'

THE NORTHWEST CORNER OF SECTION 29,
TOWN 13 NORTH, RANGE 1 WEST, TOWN OF
UNION, VERNON COUNTY, WISCONSIN.

(A) IDENTIFY THE CORNER BY REFERENCE
TO THE U.S. PUBLIC LAND SURVEY SYSTEM

■ = CORNER MONUMENT RESTORED



SECTION 29
TOWN 13 NORTH
RANGE 1 WEST

WITNESS TO CORNER LOCATION:

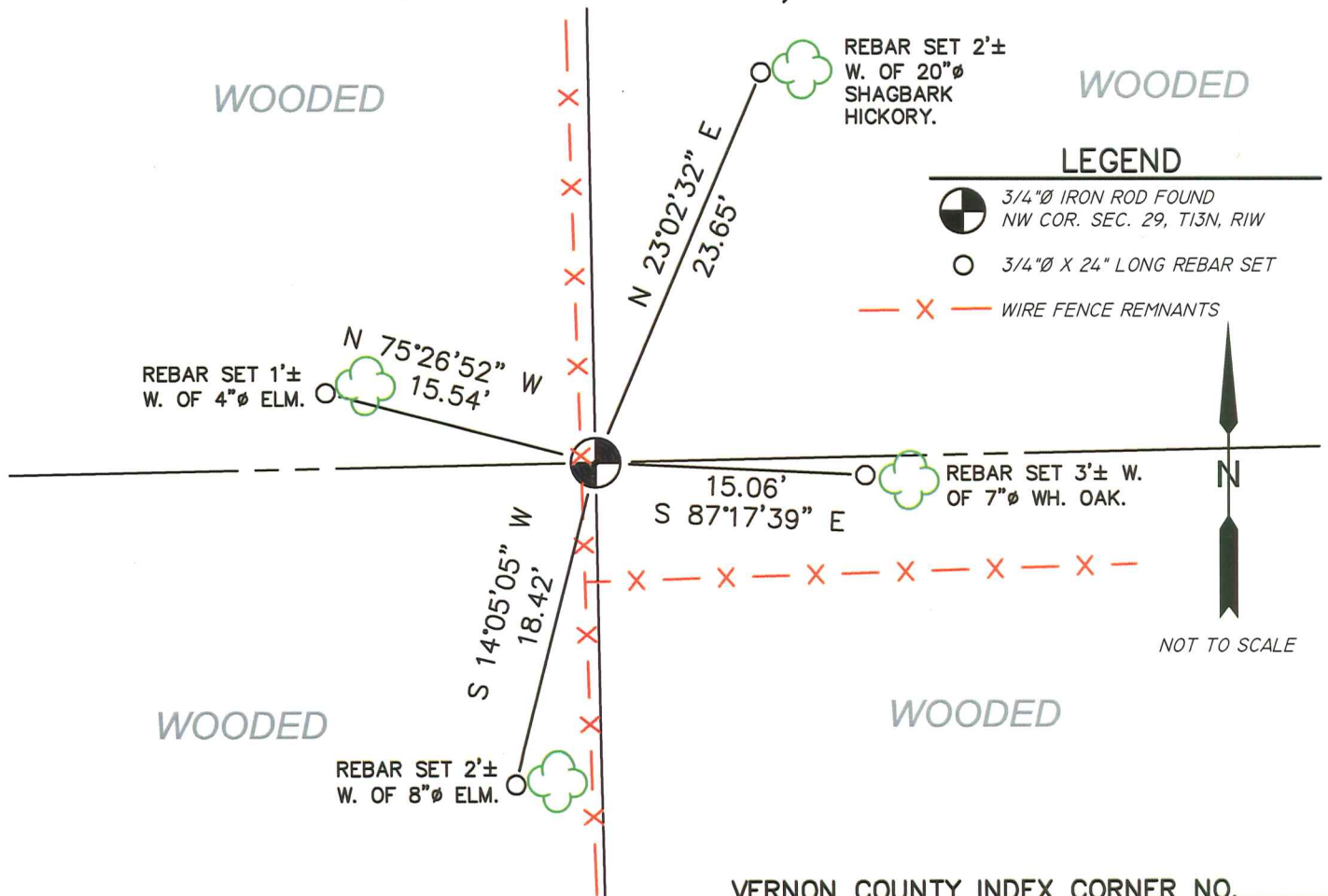
TODD T. RUMMLER

MARK A. MAHONEY

(B) DESCRIBE ANY RECORD EVIDENCE, MONUMENT EVIDENCE, OCCUPATIONAL EVIDENCE,
TESTIMONIAL EVIDENCE OR ANY OTHER MATERIAL EVIDENCE YOU CONSIDERED, AND
WHETHER THE MONUMENT WAS FOUND OR PLACED.

ROBERT LAMPMAN S-1296 SET A 3/4" DIAMETER X 30" LONG IRON ROD AT THIS CORNER
AS SHOWN ON HIS TIE SHEET DATED MAY 13, 1996. I FOUND MR. LAMPMAN'S IRON ROD
APPROX. 4 FEET NORTH OF A VERY DILAPIDATED FENCE CORNER. MR LAMPMAN'S
REFERENCE TIES (SPIKES IN NEARBY TREES) ARE OVERGROWN AND ONE OF THE TEES
HAS DIED AND FALLEN OVER. I ACCEPTED THE IRON ROD AS THE CORNER AND
ESTABLISHED NEW REFERENCE TIES AS SHOWN BELOW TO PERPETUATE THE CORNER
LOCATION. THIS CORNER IS LOCATED IN A DEEP WOODED VALLEY.

(C & D) IN THE PLAN VIEW DRAWING BELOW, PROVIDE REFERENCE TIES TO AT LEAST 4
WITNESS MONUMENTS. (WITNESS MONUMENTS SHALL BE CONCRETE, NATURAL STONE,
IRON OR OTHER EQUALLY DURABLE MATERIAL.) DESCRIBE WITNESS MONUMENTS.



(E) DESCRIBE ANY MATERIAL DISCREPANCY BETWEEN THE LOCATION OF THE CORNER AS RESTORED OR REESTABLISHED AND THE LOCATION OF THAT CORNER AS PREVIOUSLY RESTORED OR REESTABLISHED BY DISTANCE AND DIRECTION. SHOW THE DISCREPANCY ON THE PLAN VIEW DRAWING UNDER (C), ABOVE. SHOW THE DISTANCES BETWEEN THE CORNER AS PREVIOUSLY RESTORED OR REESTABLISHED AND (1) THE CORNER AS RESTORED OR REESTABLISHED, AND (2) TO AT LEAST 2 OF THE WITNESS MONUMENTS AS SHOWN ON THE DRAWING IN (C), ABOVE.

NONE

(F) WAS THE CORNER RESTORED THROUGH ACCEPTANCE OF (1) AN OBLITERATED EVIDENCE LOCATION, OR (2) A FOUND PERPETUATED LOCATION?

2.) A FOUND PERPETUATED LOCATION

(G & H) WAS THE CORNER REESTABLISHED THROUGH LOST CORNER PROPORTIONATE METHODS? IF SO SHOW THE METHOD, INCLUDING THE DIRECTION AND DISTANCED TO OTHER PUBLIC LAND SURVEY CORNERS USED AS EVIDENCE OR USED FOR PROPORTIONING IN DETERMINING THE CORNER LOCATION.

NO.

AFFIX LAND SURVEYOR SEAL

(I) I, TODD T. RUMMLER, PLS-2443 CERTIFY THAT THE CORNER LOCATION SHOWN ON THIS RECORD WAS DETERMINED BY ME OR UNDER MY DIRECTION AND CONTROL AND THAT THIS U.S. PUBLIC LAND SURVEY MONUMENT RECORD IS CORRECT AND COMPLETE TO THE BEST OF MY KNOWLEDGE AND BELIEF.

Todd T. Rummeler

SIGNATURE

April 19, 2018

DATE



JUN 19 1996

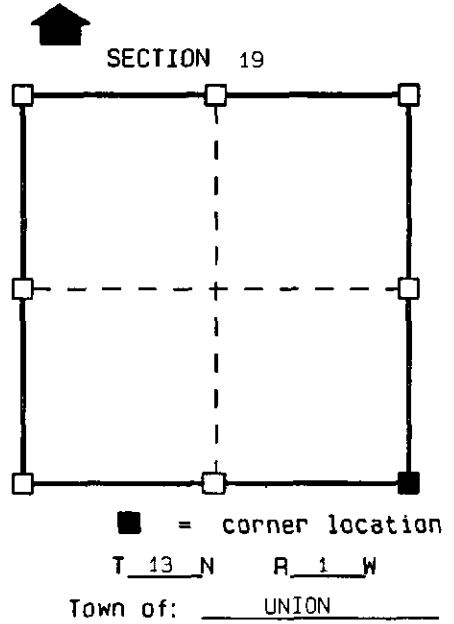
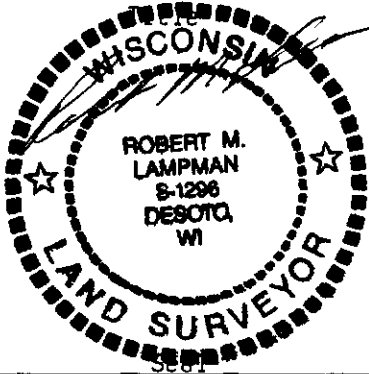
CERTIFIED LAND CORNER

STATE OF WISCONSIN)
 COUNTY OF VERNON) S.S.

CERTIFICATE

I, ROBERT M. LAMPMAN, do hereby certify that on the 11th day of MAY 1996, I found ~~evidence~~ (no evidence) of the SE corner of SECTION 19, T13 N, R1 W, Fourth Principal Meridian, and I re-established said corner according to the Wisconsin Statutes as shown and described hereon.

Dated this 13th day of MAY 1996
ROBERT M. LAMPMAN R.L.S. S-1296



History of original corner establishment:

ORIGINAL CORNER ESTABLISHED BY A.L. BROWN IN 1846.
 CORNER USED IN RESURVEY BY W.H.KNOWER LOCATED IN SECTION 20. SURVEY DATED 1882.

Description of corner evidence found:

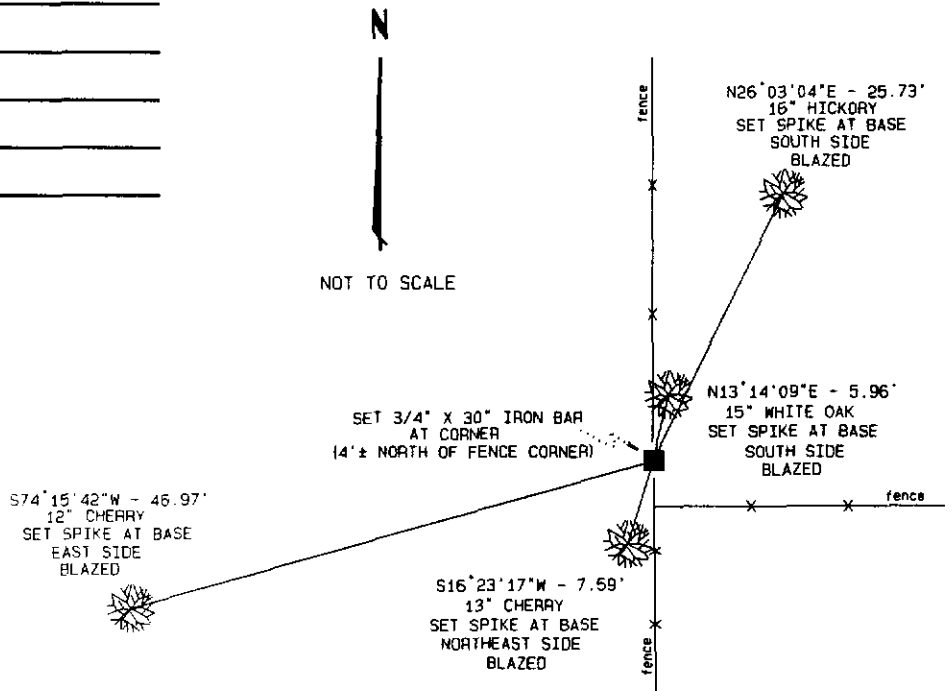
USED EXISTING MONUMENTS AT THE E 1/4 CORNER AND THE SOUTH ONE-QUARTER CORNER OF SAID SECTION 19 AND OCCUPATIONAL EVIDENCE IN THE SE 1/4 OF SECTION 19 TO RE-ESTABLISH CORNER LOCATION.

Description of corner and witness monuments, references and accessories used to perpetuate the original or re-established location of this corner:

Witnesses to corner location:

ROBERT M. LAMPMAN
SHAWN TORGERSON

Sketch:



SURVEY CONTROL ORDER

Horizontal
Vertical

WISCONSIN COORDINATE SYSTEM

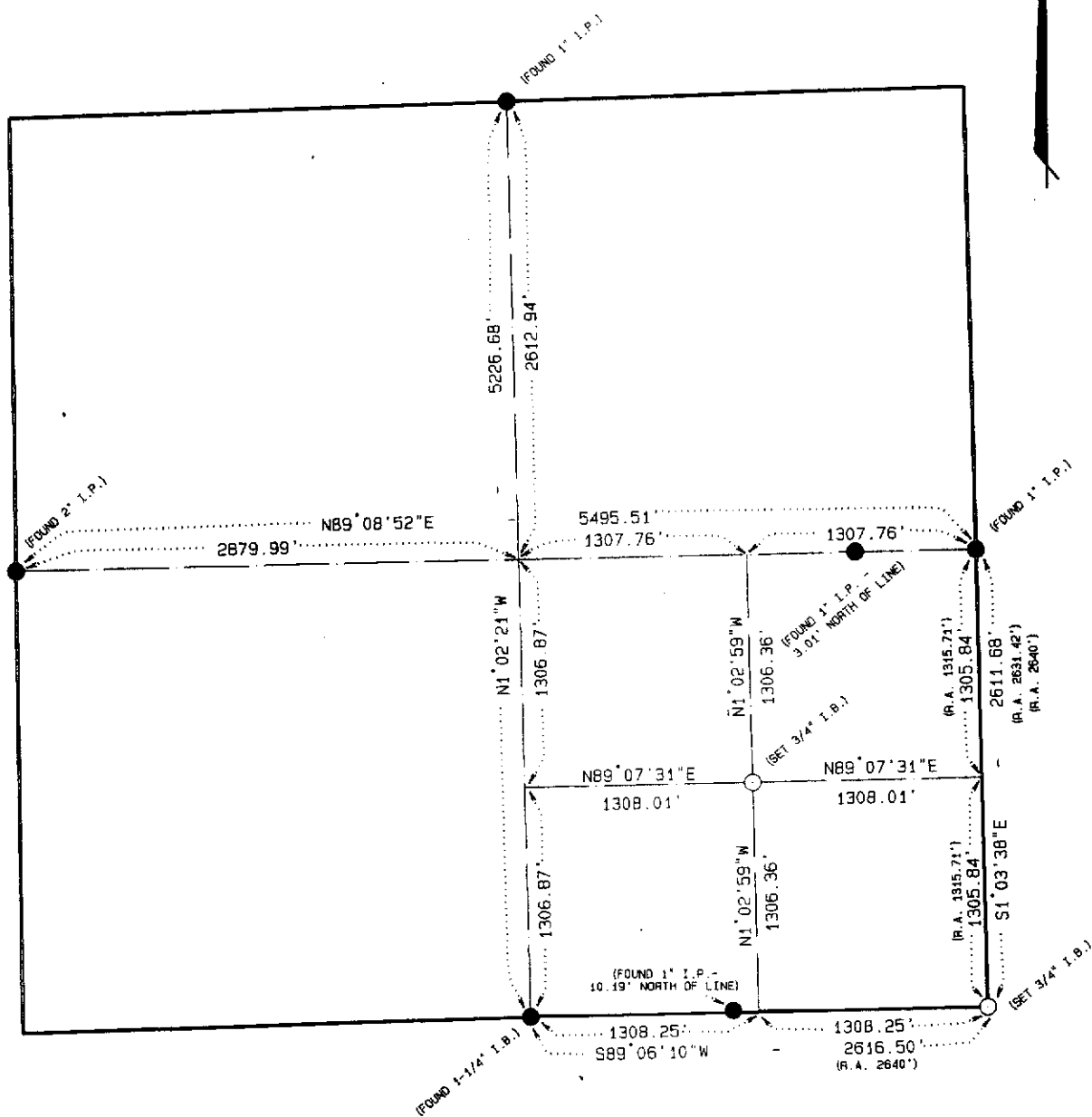
Corner	East (X)	North (Y)	Elevation (Z)	Zone
Control Sta. Name				

DATA SHEET

SECTION 19, T13N, R1W,
TOWN OF UNION, VERNON COUNTY,
WISCONSIN

SCALE: 1" = 1000'

N



BEARINGS REFERENCED TO THE EAST-WEST
ONE-QUARTER LINE OF SECTION 19, T13N, R1W.
ASSUMED BEARING $N89^{\circ}08'52''E$.