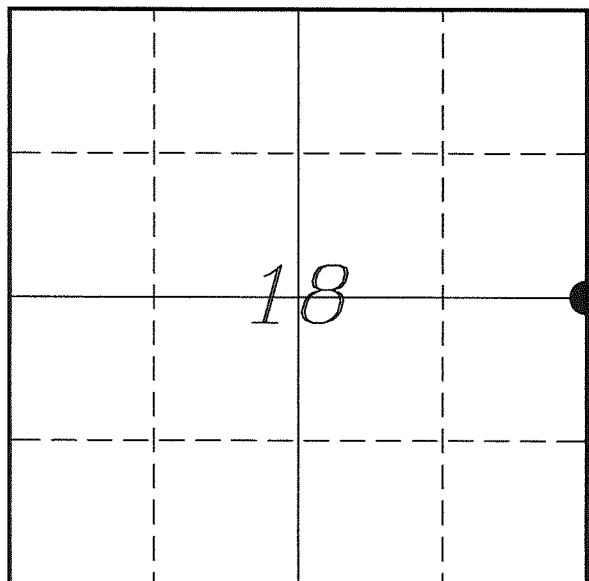

U. S. PUBLIC LAND SURVEY MONUMENT RECORD

**SECTION 18, T13N, R1W, TOWN OF UNION
VERNON COUNTY, WISCONSIN**


LOCATION OF LANDMARK

Witnesses: Laurence E Johns III
Al Hoff

Date: 10 April 2018

VERNON COUNTY COORDINATE SYSTEM	
Northing	166346.133
Easting	796666.764
Datum	NAD 1983 (2011)
Elevation	
Datum	
TYPE OF LANDMARK:	
Set 1 1/4" x 18" Iron Rod Over 3/4" Iron Rod	
BEARINGS ARE REFERENCED TO:	
Vernon County Coordinates (Survey Grade)	

Eagle Ridge Surveying
PO Box 213
Wilton, Wisconsin

Describe any record evidence, monument evidence, testimonial evidence or any other material evidence you considered and whether the monument was found or restored through acceptance of an obliterated evidence location.

No bearing trees of record were located.

I found 3 of the 4 ties that Cummer shows on his tie sheet. The one that missing was the corner that Carroll had set earlier as his corner.

After looking at the evidence that Cummer shows on his tie sheet & Carroll shows on his survey and looking at occupation to the East, I concluded that Cummer's location fits much better to government notes and with Wyman's surveys.

Cummer mentions on his tie sheet that he proportioned the distances between sections corners. But the distances he shows does not agree with that. It appears he used the center of Morning Star Road as his basis, which happens to be supported by a East/West fence to the East of the center of section.

A local land owner stated that the town had done some road maintenance and had raised the road bed. We found the 3/4" iron rod set by Cummer about 20" below the surface. Due to its depth, I placed a 1 1/4" x 18" iron rod over top the 3/4" iron rod.

Describe or show any material discrepancy between the location of the restored corner and that of the corner previously restored or re-established.

Alfred L Brown established this corner in January 1846.

Egbert Wyman was at this corner, in November 1877, during surveys in Sections 17 & 18. He shows this corner as the government corner.

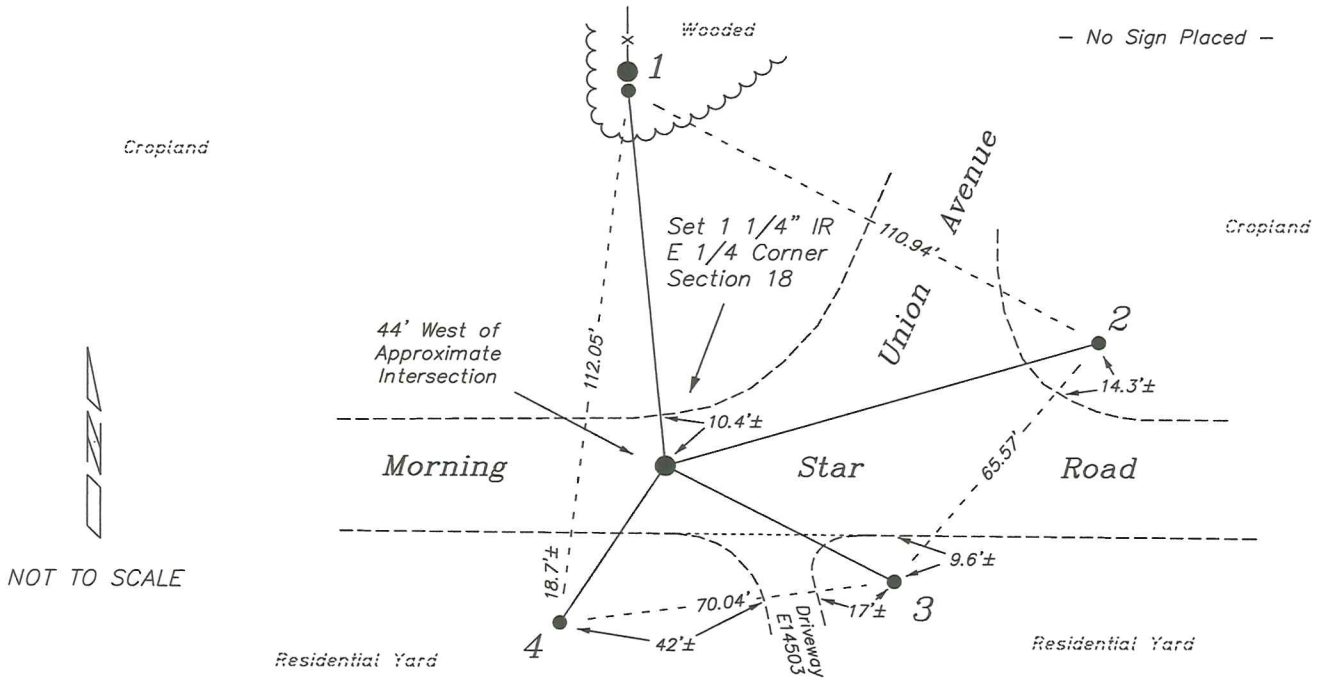
Patrick Carroll was at this corner, during a survey in Section 17. He shows that he set a 1" iron bar.

Curtis Cummer was at this location, in September 2001, during a survey in Section 18. He shows he disagreed with Carroll's location and set a 3/4" iron rod in center of roadway.

Curtis Cummer was at this location again, in September 2002, during a survey in Section 18. He used the same iron rod he had set earlier.

RECORD OF DURABLE WITNESS MONUMENTS

NO	DESCRIPTION	BEARING	DISTANCE
1	Set 3/4" x 18" Iron Rod South Side of a Wood Fence Post	N 05°39'56" W	78.79'
2	Existing 3/4" Iron Rod Shown on Cummer Tie Sheet	N 73°53'46" E (N 73°56' E)	93.68' (93.68')
3	Existing 3/4" Iron Rod Shown on Cummer Tie Sheet	S 63°12'38" E (S 63°11' E)	53.33' (53.35')
4	Existing 3/4" Iron Rod Shown on Cummer Tie Sheet	S 33°45'25" W (S 33°40' W)	39.39' (39.43')

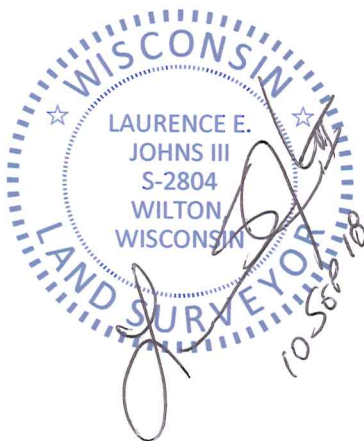
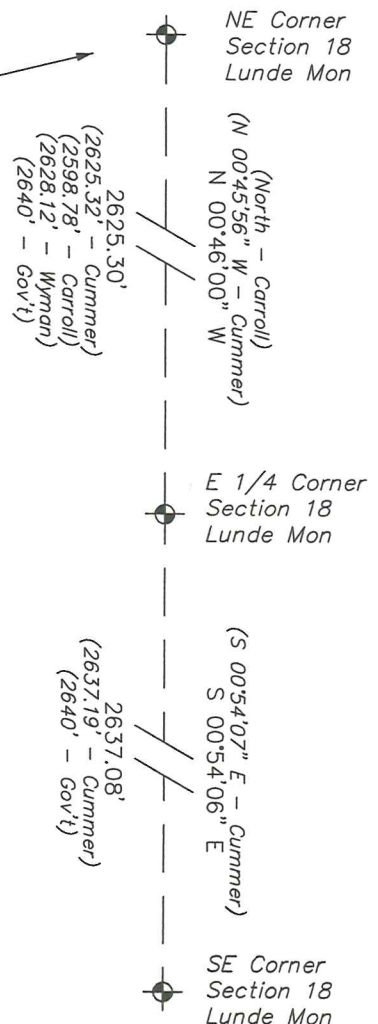


PLAN VIEW DRAWING OF REFERENCE TIES

Map Showing Distance And Direction To Other Public Land Survey
Corners Used For Re-Establishing The Corner

Note:
Measurements were not made to
this corner at this time.

Bearings and distances shown are
based on recorded information and
shown for reference.



I, Laurence E Johns III PLS 2804, Professional
Land Surveyor, hereby certify that the corner
location shown on this record was determined
by me or under my direction and control, and
that this U.S. Public Land Survey Monument
Record is correct and complete to the best of
my knowledge and belief.

RECEIVED

SEP 5 2001

BY: m.m.

Vernon County Certified U.S. Public Land Survey Monument Record

INSTRUCTIONS: THIS RECORD SHALL SHOW THE LOCATION OF THE CORNER AND SHALL INCLUDE ALL OF THE FOLLOWING ELEMENTS (A-I)

(A) IDENTIFY THE CORNER BY REFERENCE TO THE U.S. PUBLIC LAND SURVEY SYSTEM

■ = CORNER MONUMENT RESTORED

WITNESSES TO CORNER LOCATION:

- 1) Curtis J. Cummer
- 2) Brett A. Janzen
- 3)

STATE PLANE COORDINATES (WISCONSIN SOUTH ZONE)

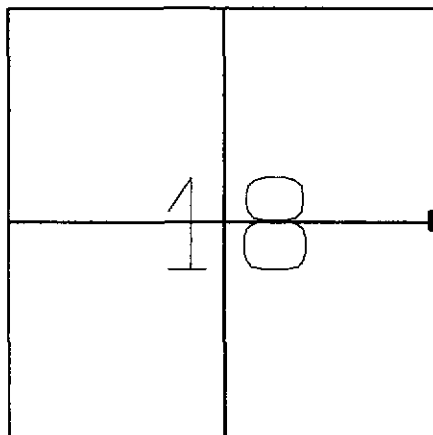
NORTHING:

EASTING:

VERNON COUNTY COORDINATES

NORTHING:

EASTING:



SECTION 18, TOWN 13 NORTH, RANGE 1 WEST
Union Township

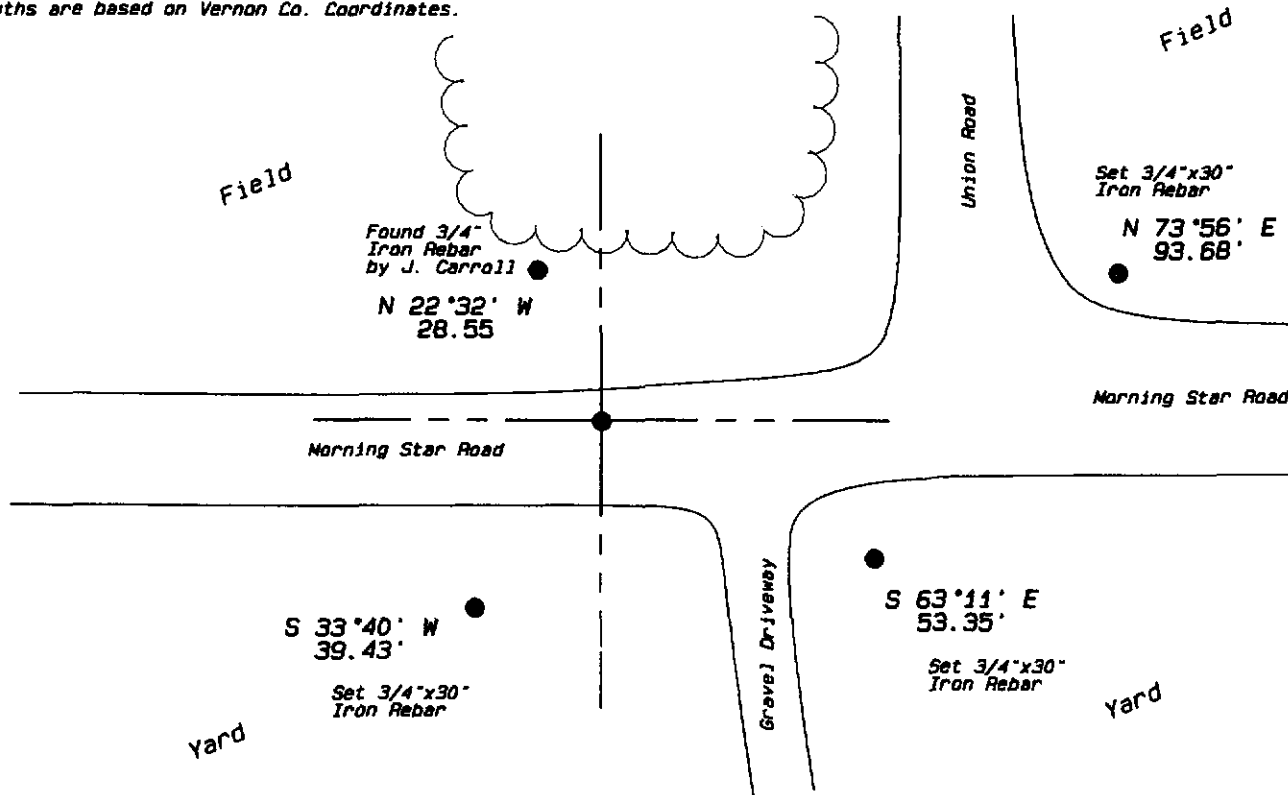
(B) DESCRIBE ANY RECORD EVIDENCE, MONUMENT EVIDENCE, OCCUPATIONAL EVIDENCE, TESTIMONIAL EVIDENCE OR ANY OTHER MATERIAL EVIDENCE YOU CONSIDERED, AND WHETHER THE MONUMENT WAS FOUND OR PLACED.

Used single proportionate method between the NE Corner and the SE Corner of Section 18; and record government distance from a stone monument found at the Center 1/4 Corner; to place a 3/4"x30" Iron rebar as shown below.

(C) IN THE PLAN VIEW DRAWING BELOW, PROVIDE REFERENCE TIES TO AT LEAST 4 WITNESS MONUMENTS OR, IF THE LOCATION IS WITHIN A MUNICIPALITY, TO AT LEAST 2 WITNESS MONUMENTS. (WITNESS MONUMENTS SHALL BE MADE OF CONCRETE, NATURAL STONE, IRON, OR OTHER EQUALLY DURABLE MATERIAL.) DESCRIBE WITNESS MONUMENTS.

(D) SHOW A PLAN VIEW DRAWING, DEPICTING THE RELEVANT MONUMENTS AND REFERENCE TIES, WHICH IS SUFFICIENTLY DETAILED TO ENABLE ACCURATE RELOCATION OF THE CORNER MONUMENT IF IT IS DISTURBED.

Azimuths are based on Vernon Co. Coordinates.



(E) DESCRIBE ANY MATERIAL DISCREPANCY BETWEEN THE LOCATION OF THE CORNER AS RESTORED OR REESTABLISHED AND THE LOCATION OF THAT CORNER AS PREVIOUSLY RESTORED OR REESTABLISHED BY DISTANCE AND DIRECTION. SHOW THE DISCREPANCY ON THE PLAN VIEW DRAWING UNDER (D), ABOVE. SHOW THE DISTANCES BETWEEN THE CORNER AS PREVIOUSLY RESTORED OR REESTABLISHED AND (1) THE CORNER AS RESTORED OR REESTABLISHED, AND (2) TO AT LEAST 2 OF THE WITNESS MONUMENTS AS SHOWN ON THE DRAWING IN (D), ABOVE.

James Carroll filed a survey labeled County CSM on 1/26/1994.
 Patrick Carroll filed a Plat of Survey on 10/13/1997. J. Carroll's survey shows a distance from the NE Corner of Section 18 to the occupied "40" Corner South to be 1299.39'.

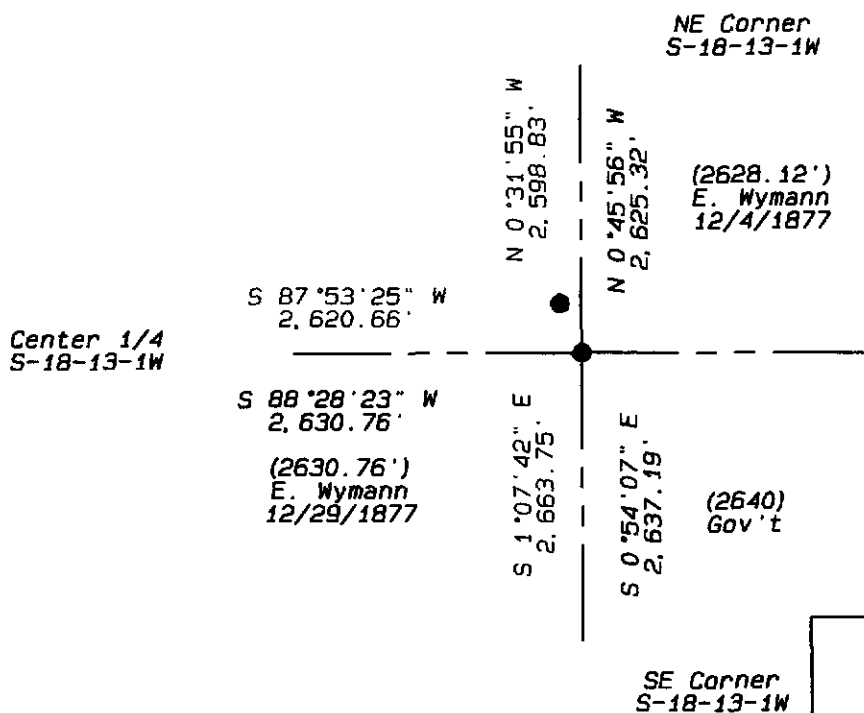
On the P. Carroll Plat the East 1/4 Corner is shown being set at a distance doubled from the NE Corner of Section 18, of 2598.78'.

After measurements along the South line of Sec's. 17 & 18, and to the NE corner and Center 1/4 Corner (found stone monument) of Section 18. Record government distances match occupation; therefor a 3/4"x30" Rebar was set as described in (B), & (G&H).

(F) WAS THE CORNER RESTORED THROUGH ACCEPTANCE OF (1) AN OBLITERATED EVIDENCE LOCATION, OR (2) A FOUND PERPETUATED LOCATION?

(1) AN OBLITERATED EVIDENCE LOCATION

(G & H) WAS THE CORNER REESTABLISHED THROUGH LOST CORNER PROPORTIONATE METHODS? IF SO SHOW THE METHOD, INCLUDING THE DIRECTION AND DISTANCES TO THE OTHER PUBLIC LAND SURVEY CORNERS USED AS EVIDENCE OR USED FOR PROPORTIONING IN DETERMINING THE CORNER LOCATION.



(I) I, Curtis J. Cummer, CERTIFY THAT THE LOCATION SHOWN ON THIS RECORD WAS DETERMINED BY ME OR UNDER MY DIRECTION AND CONTROL AND THAT THIS U.S. PUBLIC LAND SURVEY MONUMENT RECORD IS CORRECT AND COMPLETE TO THE BEST OF MY KNOWLEDGE AND BELIEF.

C. J. Cummer 9/5/01
 SIGNATURE DATE

