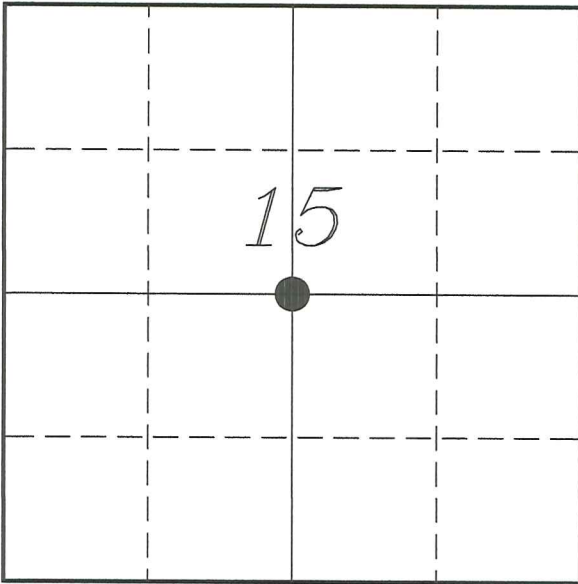


U. S. PUBLIC LAND SURVEY MONUMENT RECORD

SECTION 15, T13N, R1W, TOWN OF UNION
VERNON COUNTY, WISCONSIN



LOCATION OF LANDMARK

VERNON COUNTY COORDINATE SYSTEM	
Northing	166571.169
Easting	809823.608
Datum	NAD 1983 (2011)
Elevation	
Datum	
TYPE OF LANDMARK:	
Existing Stone Monument	
BEARINGS ARE REFERENCED TO:	
Vernon County Coordinates (Survey Grade)	

Witnesses: Al Hoff

Eagle Ridge Surveying
PO Box 213
Wilton, Wisconsin

Date: 8 Mar 2018

Describe any record evidence, monument evidence, testimonial evidence or any other material evidence you considered and whether the monument was found or restored through acceptance of an obliterated evidence location.

No bearing trees of record were located.

Found the stone mentioned by Cornell 9' Southwest of a 2-way fence corner. Knower does not mention this stone.

There was a stone found at the E 1/4 Corner as well. Probably set by the same surveyor as this one.

Distances to the North/East/South fit well with Knower's survey. There is a 70' difference to the West but may be to an error in counting pins.

This monument is 7.8' South and 19.8' West of the true center.

Accepted the stone as best representing the Center of Section. Left the stone in place.

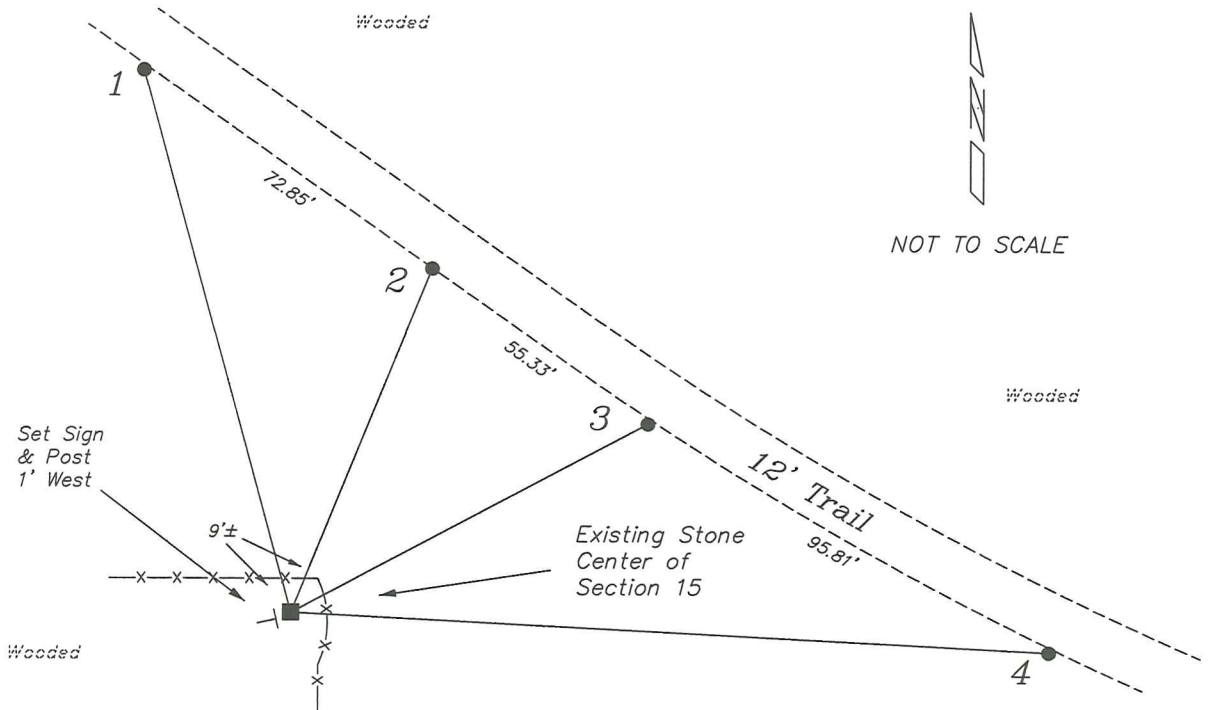
Describe or show any material discrepancy between the location of the restored corner and that of the corner previously restored or re-established.

Wm Knower was at this corner, in March 1898, during a survey in Section 15. He shows that he established this corner at the intersection of quarter lines.

Terry Cornell was at this corner, in October 1994, during a survey in Section 15. He shows he found a stone.

RECORD OF DURABLE WITNESS MONUMENTS

NO	DESCRIPTION	BEARING	DISTANCE
1	Set 3/4" x 18" Iron Rod 1' South of Trail Edge	N 15°04'30" W	117.38'
2	Set 3/4" x 18" Iron Rod 1' South of Trail Edge	N 22°14'19" E	77.72'
3	Set 3/4" x 18" Iron Rod 1' South of Trail Edge	N 62°00'15" E	84.03'
4	Set 3/4" x 18" Iron Rod 1' South of Trail Edge	S 87°06'51" E	157.66'



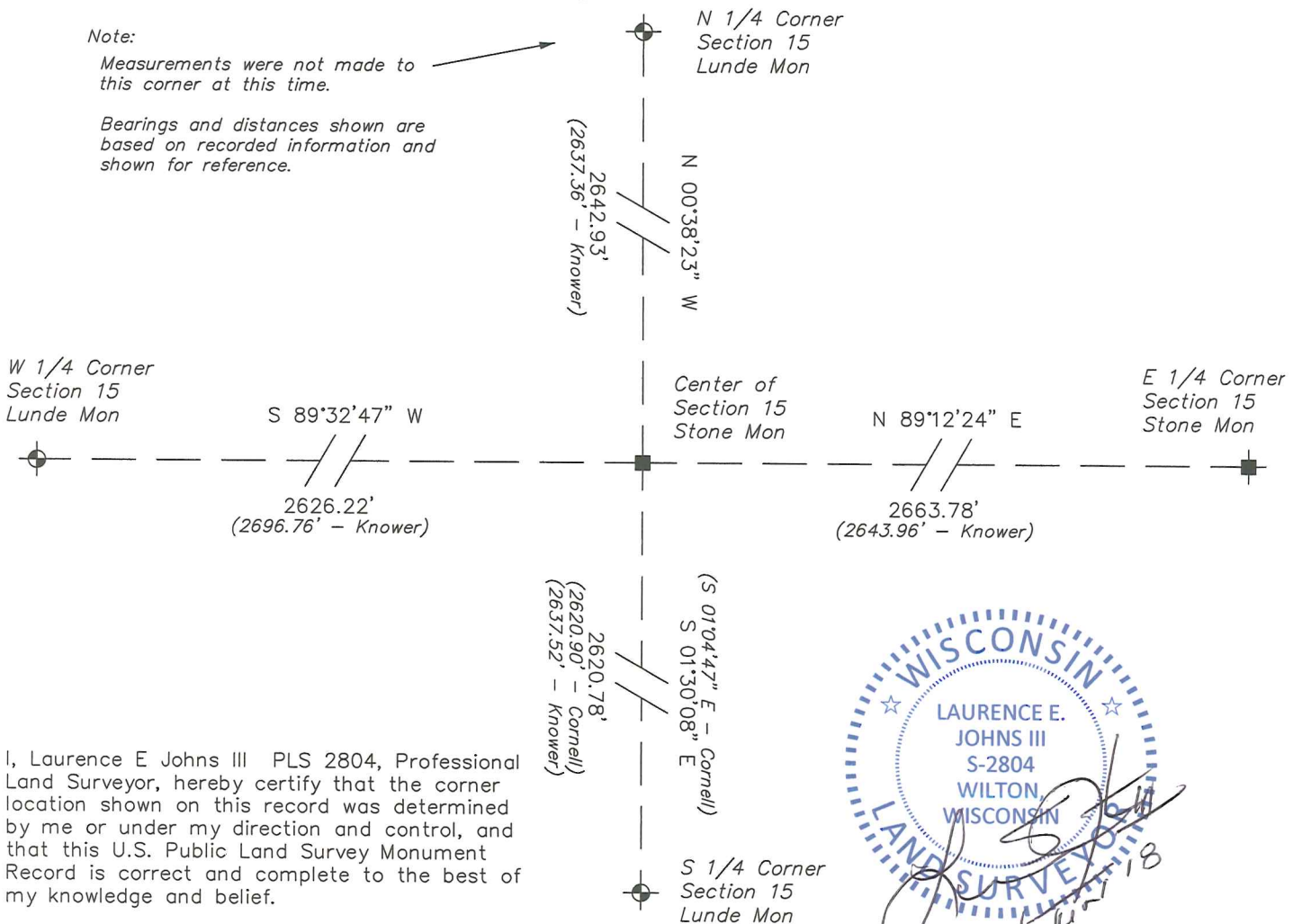
PLAN VIEW DRAWING OF REFERENCE TIES

Map Showing Distance And Direction To Other Public Land Survey
Corners Used For Re-Establishing The Corner

Note:

Measurements were not made to this corner at this time.

Bearings and distances shown are based on recorded information and shown for reference.



I, Laurence E Johns III PLS 2804, Professional Land Surveyor, hereby certify that the corner location shown on this record was determined by me or under my direction and control, and that this U.S. Public Land Survey Monument Record is correct and complete to the best of my knowledge and belief.