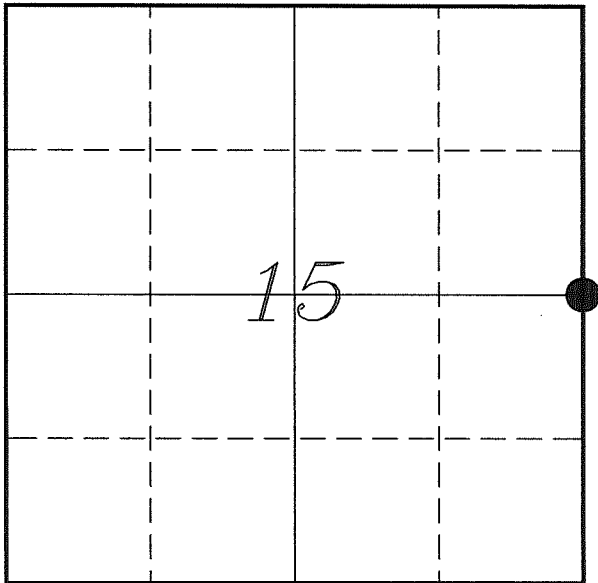


U. S. PUBLIC LAND SURVEY MONUMENT RECORD

**SECTION 15, T13N, R1W, TOWN OF UNION
VERNON COUNTY, WISCONSIN**



LOCATION OF LANDMARK

<i>VERNON COUNTY COORDINATE SYSTEM</i>	
<i>Northing</i>	<i>166608.054</i>
<i>Easting</i>	<i>812487.131</i>
<i>Datum</i>	<i>NAD 1983 (2011)</i>
<i>Elevation</i>	
<i>Datum</i>	
<i>TYPE OF LANDMARK:</i>	
<i>Existing Stone Monument</i>	
<i>BEARINGS ARE REFERENCED TO:</i>	
<i>Vernon County Coordinates (Survey Grade)</i>	

Witnesses: Laurence E Johns III
Al Hoff

Eagle Ridge Surveying
PO Box 213
Wilton, Wisconsin

Date: 31 May 2018

Describe any record evidence, monument evidence, testimonial evidence or any other material evidence you considered and whether the monument was found or restored through acceptance of an obliterated evidence location.

No bearing trees of record were located.

I found a stone of obvious non natural position at the 3-way fence corner.

Knower's survey does not indicate a stone was set at this corner. But there was also a stone found at the center of section 15.

The positioning of this stone along with the positioning of an old fence corner location only 1 foot away from the stone, I believe that this stone was set by Knower or by the land owner based on Knower's survey.

Distances as compared to Knower's survey are relative considering the terrain of the area. To the South it is about 2 feet difference. To the West is about 20 feet and to the North is 36 feet. To the North maybe an error of a half-chain and is in very rough terrain.

In my opinion this stone represents the corner as surveyed by Knower. Since he found the original government corner, i feel this stone represents the government corner.

Due to its size and stable position I did not replace the stone with a Lunde Monument.

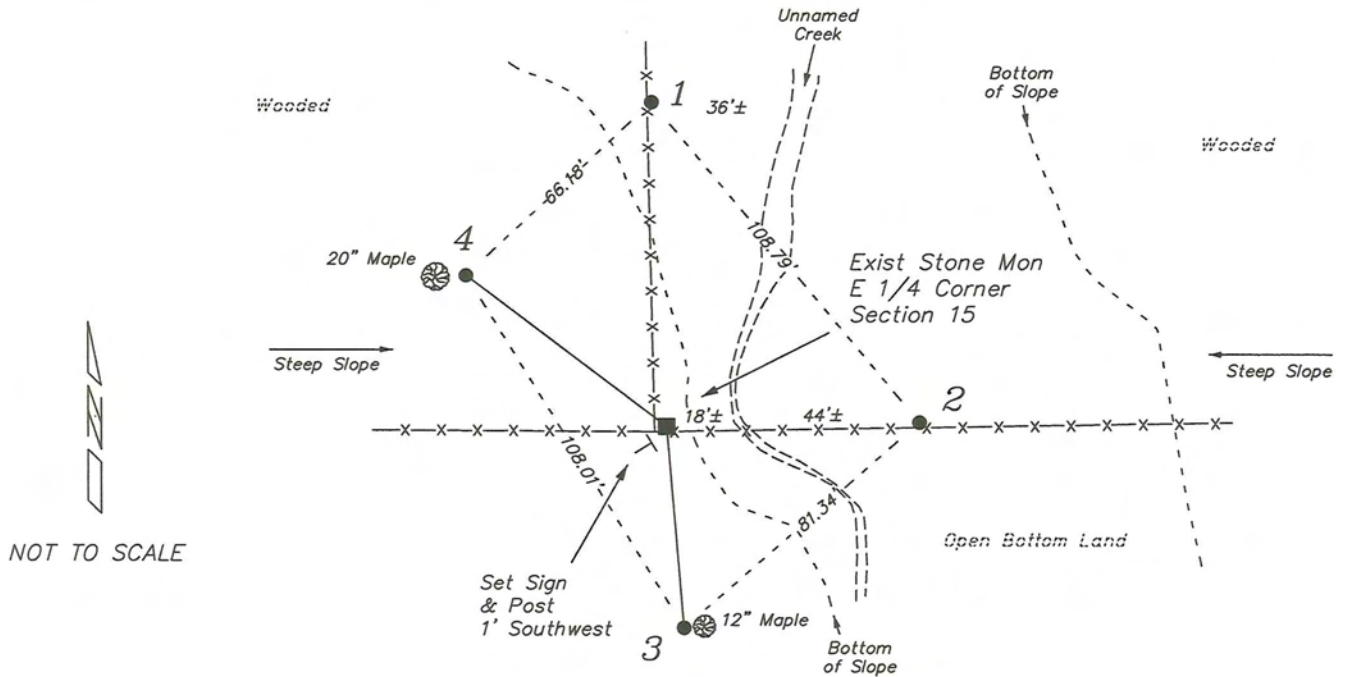
Describe or show any material discrepancy between the location of the restored corner and that of the corner previously restored or re-established.

Alfred L Brown established this corner in January 1846.

Wm Knower was at this corner, in March 1898, during a survey in Section 15. He shows that he found the government corner.

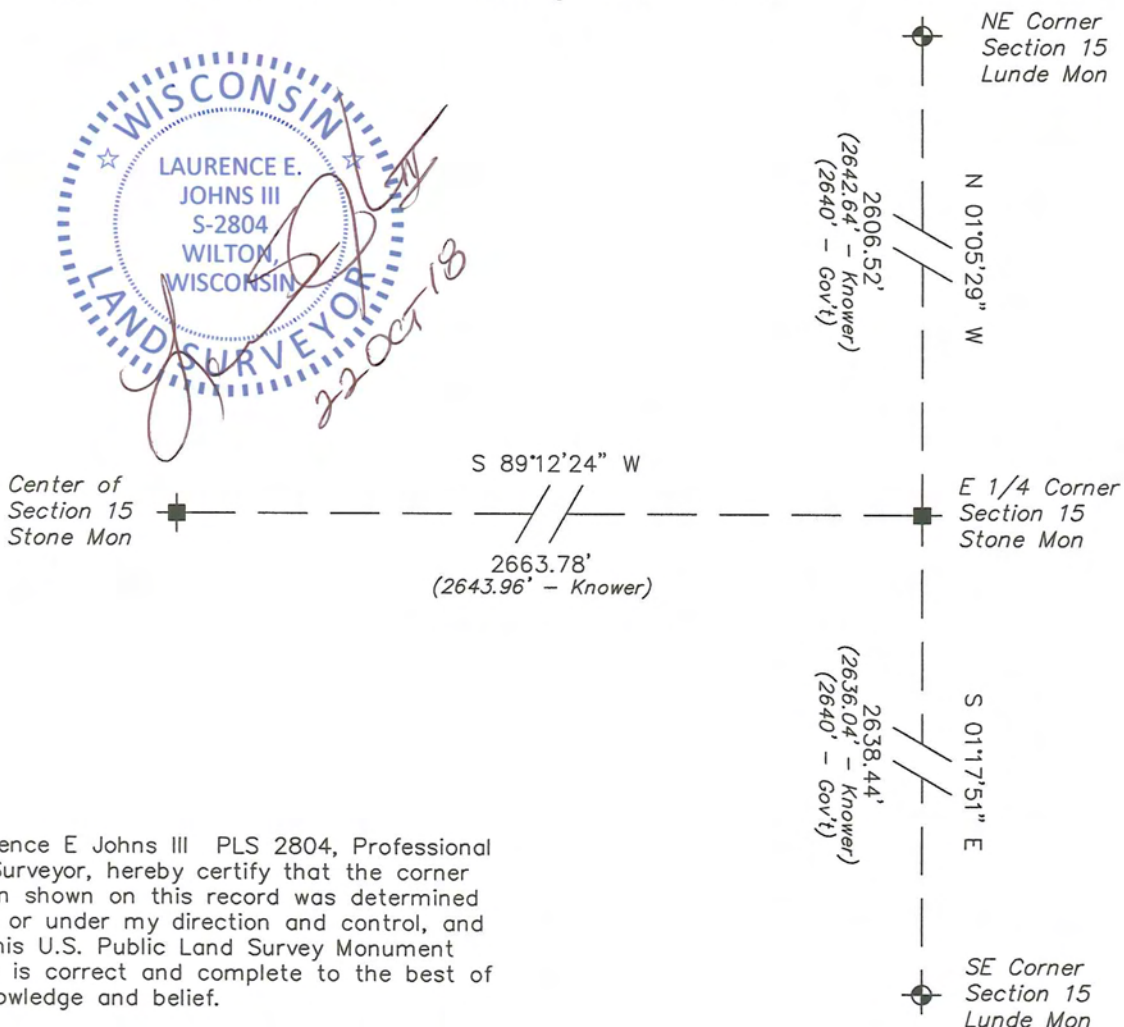
RECORD OF DURABLE WITNESS MONUMENTS

NO	DESCRIPTION	BEARING	DISTANCE
1	Set 3/4" x 18" Iron Rod In Fence Line	N 02°35'02" W	84.83'
2	Set 3/4" x 18" Iron Rod In Fence Line	N 89°04'07" E	65.71'
3	Set 3/4" x 18" Iron Rod 1' West of a 12" Maple	S 04°51'53" E	52.66'
4	Set 3/4" x 18" Iron Rod 3' East of a 20" Maple	N 52°50'36" W	65.42'



PLAN VIEW DRAWING OF REFERENCE TIES

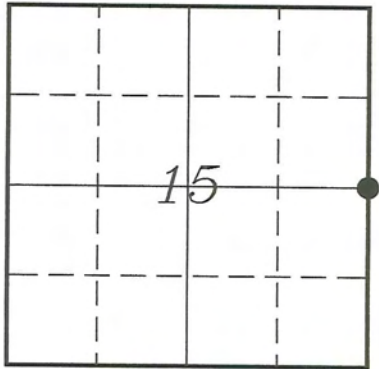
Map Showing Distance And Direction To Other Public Land Survey Corners Used For Re-Establishing The Corner



I, Laurence E Johns III PLS 2804, Professional Land Surveyor, hereby certify that the corner location shown on this record was determined by me or under my direction and control, and that this U.S. Public Land Survey Monument Record is correct and complete to the best of my knowledge and belief.

*U. S. PUBLIC LAND SURVEY MONUMENT RECORD
'Addendum for Corner Photographs'*

*SECTION 15, T13N, R1W, TOWN OF UNION
VERNON COUNTY, WISCONSIN*



LOCATION OF LANDMARK

*Date:
31 May 2018*



Taken from the East – Stone at Fence Corner