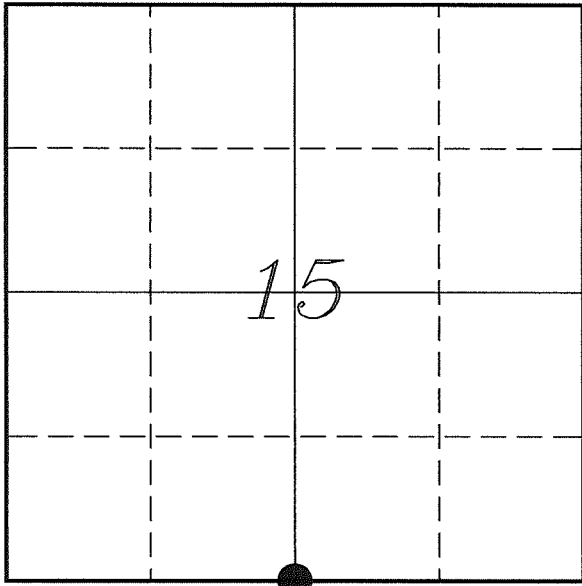


*U. S. PUBLIC LAND SURVEY MONUMENT RECORD*

*SECTION 15, T13N, R1W, TOWN OF UNION  
VERNON COUNTY, WISCONSIN*



*LOCATION OF LANDMARK*

<i>VERNON COUNTY COORDINATE SYSTEM</i>	
<i>Northing</i>	<i>163951.285</i>
<i>Easting</i>	<i>809892.315</i>
<i>Datum</i>	<i>NAD 1983 (2011)</i>
<i>Elevation</i>	
<i>Datum</i>	
<i>TYPE OF LANDMARK:</i>	
<i>Set Lunde Monument 4" Brass Capped Iron Pipe</i>	
<i>BEARINGS ARE REFERENCED TO:</i>	
<i>Vernon County Coordinates (Survey Grade)</i>	

*Witnesses: Al Hoff*

*Eagle Ridge Surveying  
PO Box 213  
Wilton, Wisconsin*

*Date: 1 June 2018*

*Describe any record evidence, monument evidence, testimonial evidence or any other material evidence you considered and whether the monument was found or restored through acceptance of an obliterated evidence location.*

No bearing trees of record were located.

Found the 1" iron pipe set by Cornell just East of a Town Road. This pipe fits occupation to the West and East.

Cornell shows on his map that he set this corner at the mid-point between section corners. This method fits occupation and fits very well with distances shown on Knower's surveys.

I accepted the iron pipe as the best available evidence of the original government corner and replaced it with a Lunde Monument.

*Describe or show any material discrepancy between the location of the restored corner and that of the corner previously restored or re-established.*

Alfred L Brown established this corner in January 1846.

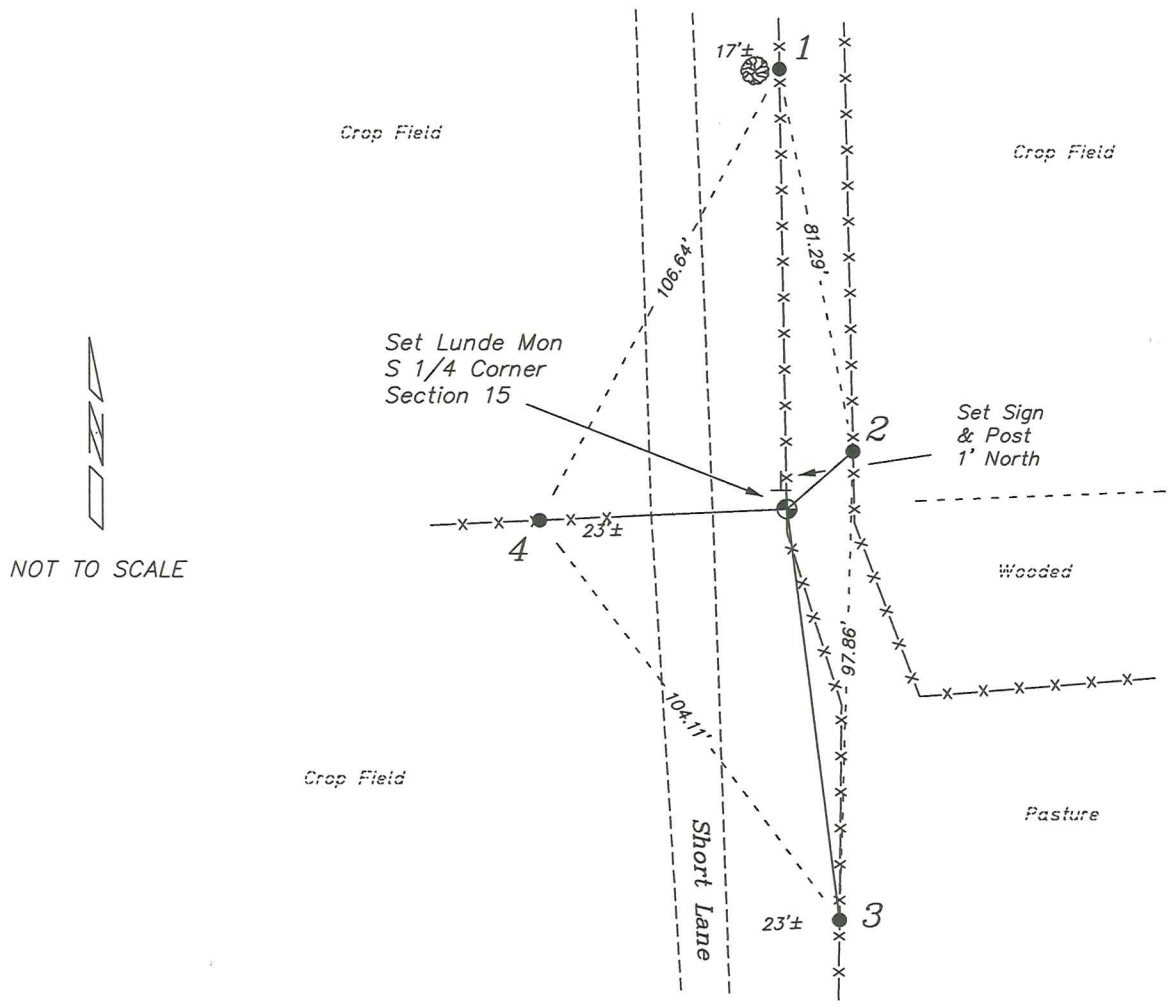
Wm Knower was at this corner, in March 1890, during a survey in Section 22. He shows he found the government corner.

Wm Knower was at this corner again, in March 1898, during a survey in Section 15. He again shows that he found the government corner.

Terry Cornell was at this corner, in October 1994, during a survey in Section 15. He shows he set a 1" iron pipe at the mid-point between section corners.

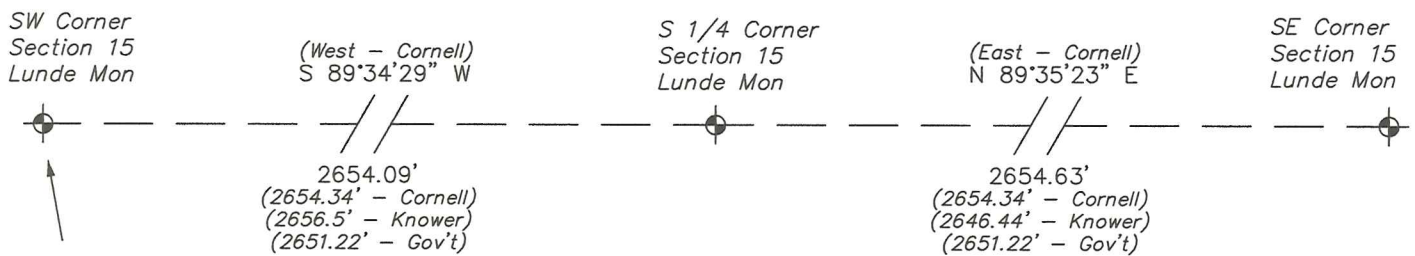
# RECORD OF DURABLE WITNESS MONUMENTS

NO	DESCRIPTION	BEARING	DISTANCE
1	Set 3/4" x 18" Iron Rod In Fence - 2' East of a 15" Maple	N 00°55'16" W	91.88'
2	Set 3/4" x 18" Iron Rod South Side of a Fence Brace Post	N 48°49'51" E	18.27'
3	Set 3/4" x 18" Iron Rod In Fence Line	S 07°14'06" E	86.48'
4	Set 3/4" x 18" Iron Rod In Old Fence Line	S 87°22'04" W	51.45'



## PLAN VIEW DRAWING OF REFERENCE TIES

Map Showing Distance And Direction To Other Public Land Survey Corners Used For Re-Establishing The Corner



**Note:**

Measurements were not made to this corner at this time.

Bearings and distances shown are based on recorded information and shown for reference.

I, Laurence E Johns III PLS 2804, Professional Land Surveyor, hereby certify that the corner location shown on this record was determined by me or under my direction and control, and that this U.S. Public Land Survey Monument Record is correct and complete to the best of my knowledge and belief.

