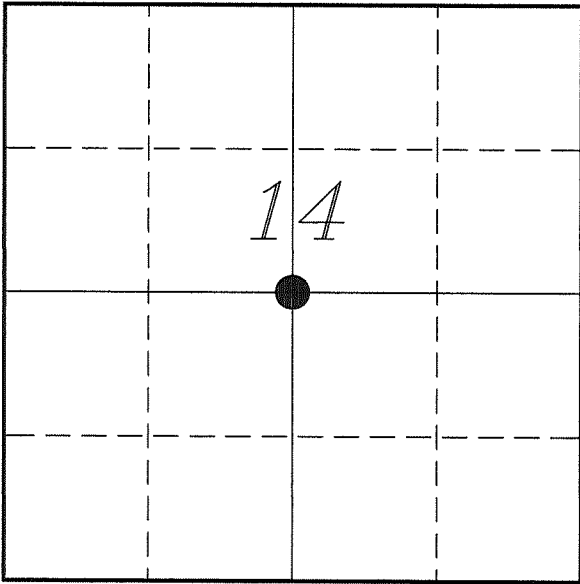


*U. S. PUBLIC LAND SURVEY MONUMENT RECORD*

*SECTION 14, T13N, R1W, TOWN OF UNION  
VERNON COUNTY, WISCONSIN*



*LOCATION OF LANDMARK*

<i>VERNON COUNTY COORDINATE SYSTEM</i>	
<i>Northing</i>	<i>166656.418</i>
<i>Easting</i>	<i>815151.502</i>
<i>Datum</i>	<i>NAD 1983 (2011)</i>
<i>Elevation</i>	
<i>Datum</i>	
<i>TYPE OF LANDMARK:</i>	
<i>Existing 3/4" Iron Rod</i>	
<i>BEARINGS ARE REFERENCED TO:</i>	
<i>Vernon County Coordinates (Survey Grade)</i>	

*Witnesses: Al Hoff*

*Eagle Ridge Surveying  
PO Box 213  
Wilton, Wisconsin*

*Date: 12 May 2018*

*Describe any record evidence, monument evidence, testimonial evidence or any other material evidence you considered and whether the monument was found or restored through acceptance of an obliterated evidence location.*

Found the 3/4" iron rod set by Janiak at a 2-way fence corner.

This corner is 36' East and 39' North of the true center.

I found occupation to the West, South and North which supports this location. There is no occupation to the East that supports or disputes this corner.

Accepting the 3/4" iron rod and supporting occupation as the best representation of the Center of Section.

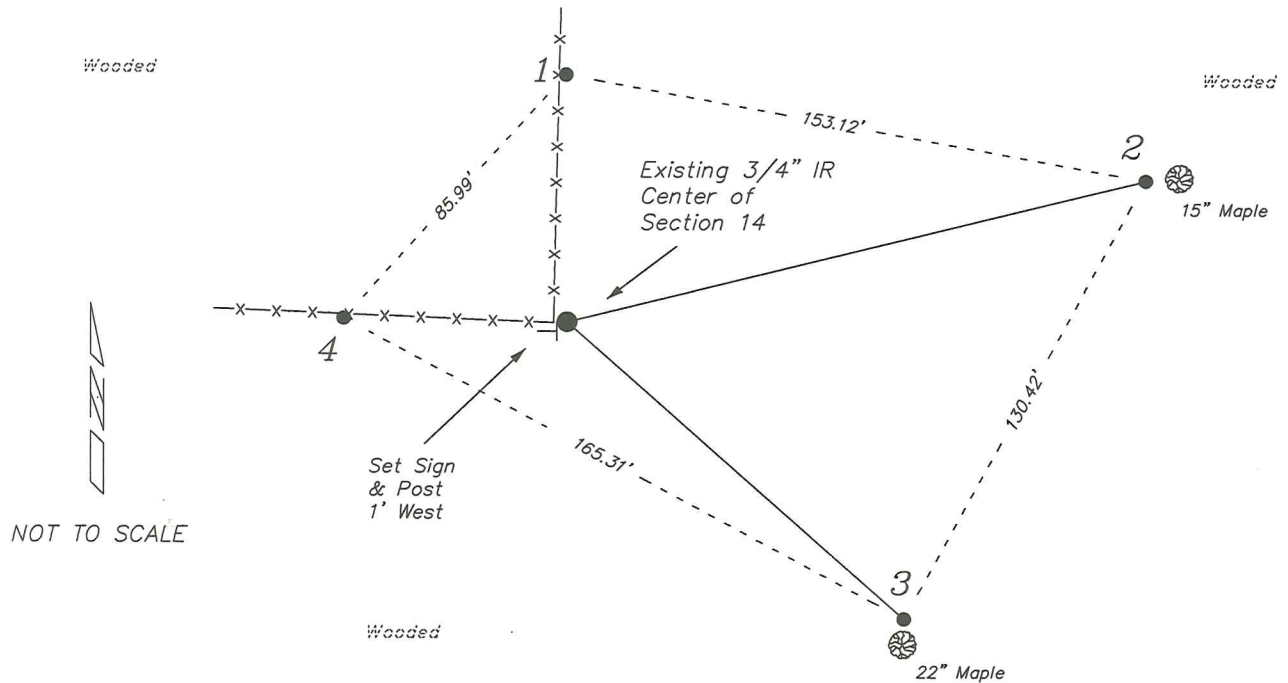
Left the 3/4" iron rod in place.

*Describe or show any material discrepancy between the location of the restored corner and that of the corner previously restored or re-established.*

Matthew Janiak was at this corner, in August 1991, during a survey in Section 14. He shows that he set a 3/4" iron rod.

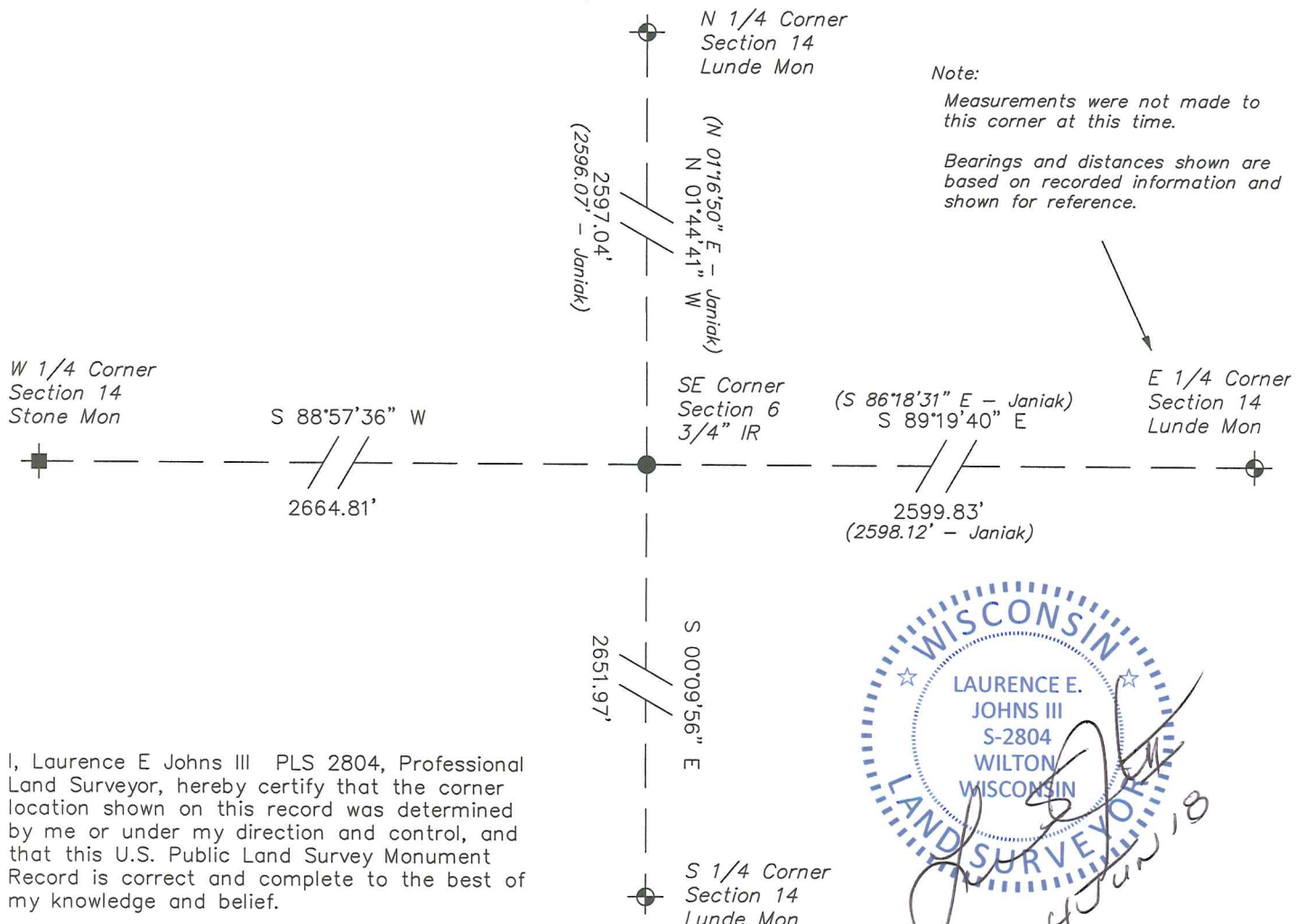
## RECORD OF DURABLE WITNESS MONUMENTS

NO	DESCRIPTION	BEARING	DISTANCE
1	Set 3/4" x 18" Iron Rod In Fence Line	N 00°11'30" W	64.57'
2	Set 3/4" x 18" Iron Rod 3' West of a 15" Maple	N 76°13'54" E	154.83'
3	Set 3/4" x 18" Iron Rod 3' North of a 22" Maple	S 48°30'09" E	116.87'
4	Set 3/4" x 18" Iron Rod In Fence Line	N 89°05'44" W	58.04'



## PLAN VIEW DRAWING OF REFERENCE TIES

Map Showing Distance And Direction To Other Public Land Survey  
Corners Used For Re-Establishing The Corner



I, Laurence E Johns III PLS 2804, Professional Land Surveyor, hereby certify that the corner location shown on this record was determined by me or under my direction and control, and that this U.S. Public Land Survey Monument Record is correct and complete to the best of my knowledge and belief.



007 15 1991

# GOVERNMENT CORNER RECORD

CENTER 1/4 CORNER, SECTION 14, TOWNSHIP 13 NORTH, RANGE 1 EAST - WEST,

TOWN, CITY OR VILLAGE OF UNION, VERNON COUNTY

TYPE OF MONUMENT: 3/4" x 24" IRON ROD ELEVATION - M.S.L. DATUM

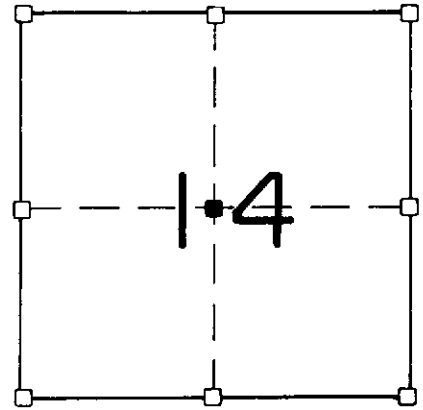
WITNESSES TO CORNER LOCATION

SEAN WALSH

GARY POLLOCK

SECTION 14, T 13 N, R 1 EW

TOWN OF UNION



■ - CORNER LOCATION

NORTH

TIE SKETCH (SHOW ALL HELPFUL FEATURES)

WOODED

WOODED

20d POLESPIKE  
W/S 10" MAPLE

40.82'

58.78'  
SLOPE

20d POLESPIKE  
S/S 8" MAPLE

20d POLESPIKE  
NE/S 8" MAPLE

54.97'

20d POLESPIKE  
NE/S 12" HICKORY

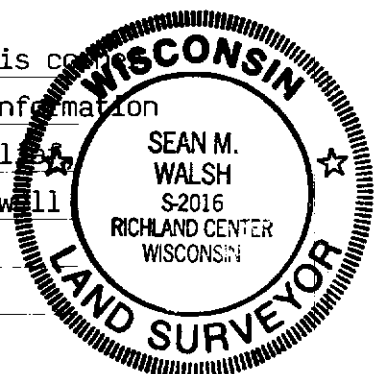
WOODED

WOODED

SURVEYOR'S CERTIFICATE

SEAL S. 2016

I, Sean M. Walsh, DO HEREBY CERTIFY THAT I have established this corner in accordance with the information contained hereon and that this information is correct and true to the best of my information, knowledge and belief. I established this corner at the occupied location which fits very well with the other occupied and monumented corners of the section.



DATED THIS 23<sup>RD</sup> DAY OF SEPTEMBER 19 91

REGISTERED LAND SURVEYOR

21