

VERNON COUNTY U.S. PUBLIC LAND SURVEY MONUMENT RECORD

INSTRUCTIONS: THIS RECORD SHALL SHOW THE LOCATION OF THE CORNER AND SHALL INCLUDE ALL OF THE FOLLOWING ELEMENTS (A THROUGH I)

(A) IDENTIFY THE CORNER BY REFERENCE TO THE U.S. PUBLIC LAND SURVEY SYSTEM

■ = CORNER MONUMENT RESTORED

WITNESSES TO CORNER LOCATION:

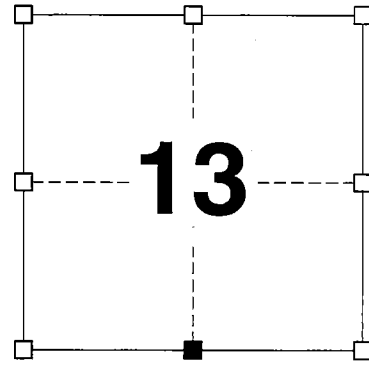
JAY P. ADAMS
GREGORY A. MILLER

GEOGRAPHIC COORDINATES,
NAD 83 (2007) ADJUSTMENT:

LONGITUDE: 90° 26' 31.3179"
LATITUDE: 43° 35' 48.4512"

WISCONSIN COUNTY COORDINATE SYSTEM (WCCS), VERNON COUNTY,
NAD 83 (2007) ADJUSTMENT:

NORTHING: 164,062.21
EASTING: 820,420.33



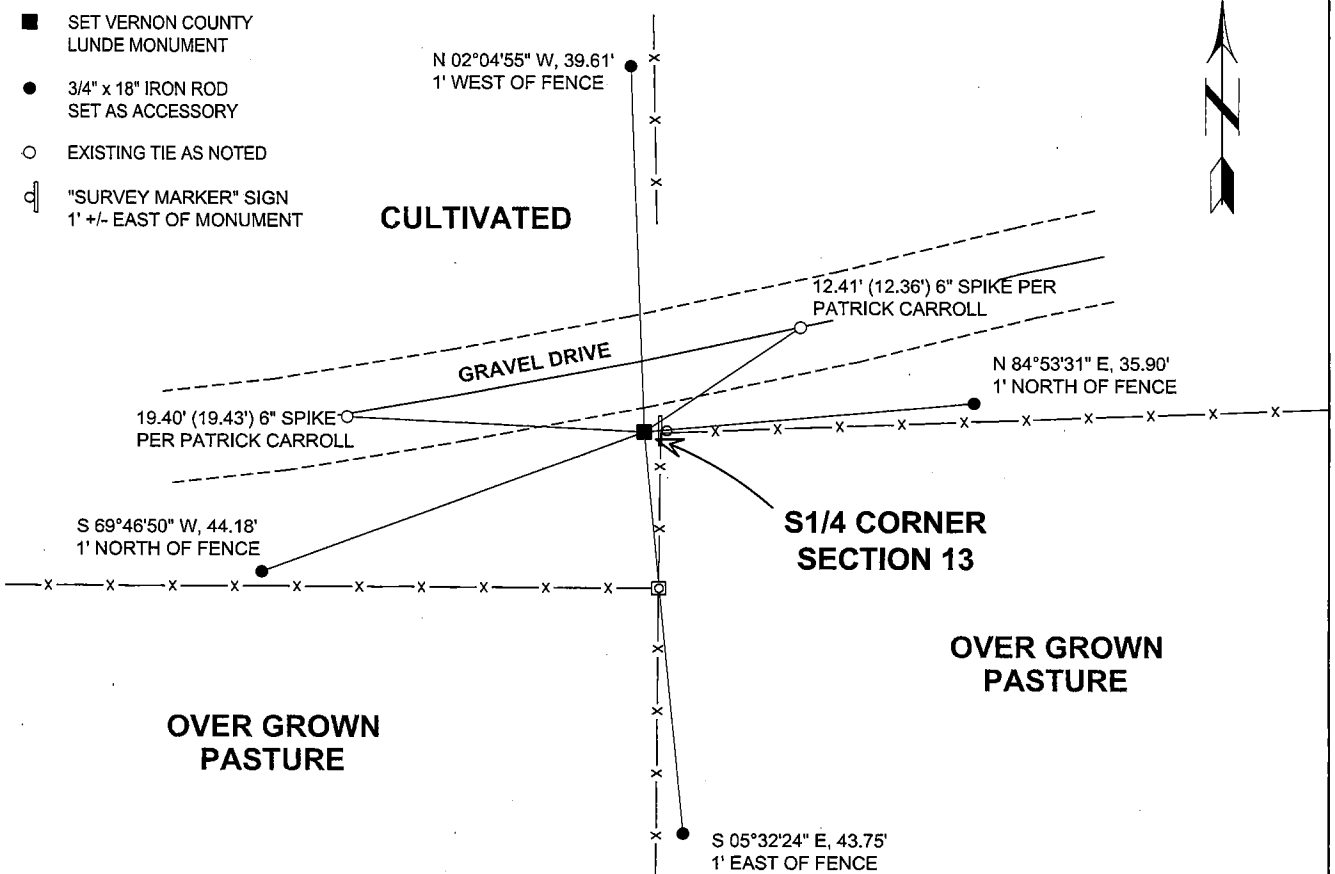
SECTION 13
TOWN 13 NORTH, RANGE 1 WEST

(B) DESCRIBE ANY RECORD EVIDENCE, MONUMENT EVIDENCE, OCCUPATIONAL EVIDENCE, TESTIMONIAL EVIDENCE, OR ANY OTHER MATERIAL EVIDENCE YOU CONSIDERED, AND WHETHER THE MONUMENT WAS FOUND OR PLACED.

I COULD FIND NO MONUMENTS OR BEARING TREES FROM THE ORIGINAL GOVERNMENT SURVEY OR KNOWER'S SUBSEQUENT RESURVEY. I RECOVERED THE 2 1/2-INCH DIAMETER IRON PIPE ACCEPTED BY CARROLL AND I ACCEPTED THIS LOCATION AS THE BEST AVAILABLE EVIDENCE OF THE ORIGINAL GOVERNMENT CORNER AND REMONUMENTED IT WITH A VERNON COUNTY LUNDE MONUMENT.

(C) IN THE PLAN VIEW DRAWING BELOW, PROVIDE REFERENCE TIES TO AT LEAST 4 WITNESS MONUMENTS, (WITNESS MONUMENTS SHALL BE MADE OF CONCRETE, NATURAL STONE, IRON OR ANY OTHER EQUALLY DURABLE MATERIAL.) DESCRIBE WITNESS MONUMENTS.

(D) SHOW A PLAN VIEW DRAWING DEPICTING THE RELEVANT MONUMENTS AND REFERENCE TIES, WHICH IS SUFFICIENTLY DETAILED TO ENABLE ACCURATE RELOCATION OF THE CORNER MONUMENT IF IT IS DISTURBED.



(E) DESCRIBE ANY MATERIAL DISCREPANCY BETWEEN THE LOCATION OF THE CORNER AS RESTORED OR REESTABLISHED AND THE LOCATION OF THAT CORNER AS PREVIOUSLY RESTORED OR REESTABLISHED BY DISTANCE AND DIRECTION. SHOW THE DISCREPANCY ON THE PLAN VIEW DRAWING UNDER (D), ABOVE. SHOW THE DISTANCES BETWEEN THE CORNER AS PREVIOUSLY RESTORED OR REESTABLISHED AND (1) THE CORNER AS RESTORED OR REESTABLISHED, AND (2) TO AT LEAST 2 OF THE WITNESS MONUMENTS SHOWN ON THE DRAWING IN (D) ABOVE.

N/A

(F) WAS THE CORNER RESTORED THROUGH ACCEPTANCE OF (1) AN OBLITERATED EVIDENCE LOCATION, OR, (2) A FOUND PERPETUATED LOCATION?

(2) A FOUND PERPETUATED LOCATION

(G&H) WAS THE CORNER REESTABLISHED THROUGH LOST CORNER PROPORTIONATE METHODS? IF SO, SHOW THE METHOD, INCLUDING THE DIRECTIONS AND DISTANCES TO OTHER PUBLIC LAND SURVEY CORNERS USED AS EVIDENCE OR USED FOR PROPORTIONING IN DETERMINING THE CORNER LOCATION.

N/A

CORNER HISTORY

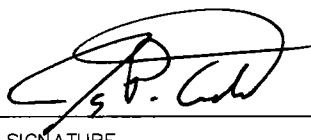
ORIGINAL GOVERNMENT CORNER ESTABLISHED BY A.L. BROWN IN JANUARY 1846.

WILLIAM KNOWER UTILIZED THIS CORNER IN SURVEYS DATED MAY AND JUNE OF 1879.

IN A TIE SHEET DATED 3 NOVEMBER 2010, PATRICK CARROLL ACCEPTED A 2 1/2-INCH IRON PIPE USED BY KERRY ZIMMERMAN IN A SURVEY DATED 1984.

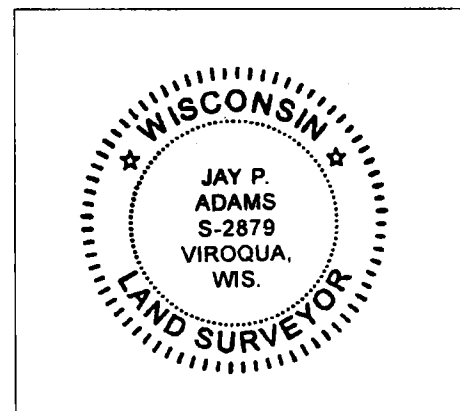
AFFIX LAND SURVEYOR SEAL

(I) I, JAY P. ADAMS, R.L.S. 2879, CERTIFY THAT THE CORNER LOCATION SHOWN ON THIS RECORD WAS DETERMINED BY ME OR UNDER MY DIRECTION AND CONTROL AND THAT THIS U.S. PUBLIC LAND SURVEY MONUMENT RECORD IS CORRECT AND COMPLETE TO THE BEST OF MY KNOWLEDGE AND BELIEF.


SIGNATURE

8/26/11

DATE



VERNON COUNTY COORDINATE FORM

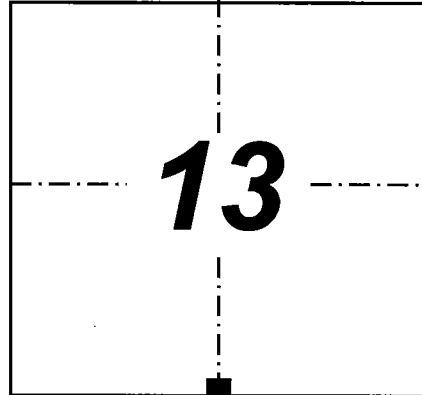
"As An Addendum To"

A CERTIFIED U.S. PUBLIC LAND SURVEY MONUMENT RECORD

INSTRUCTIONS: THIS RECORD FORM SHOULD BE USED WHEN COORDINATES ARE PROVIDED FOR A PUBLIC LAND SURVEY CORNER AND SHALL INCLUDE ALL OF THE FOLLOWING ELEMENTS (A-D)

(A) IDENTIFY THE CORNER BY REFERENCE TO THE U.S. PUBLIC LAND SURVEY SYSTEM IN DIAGRAM AT RIGHT

■ = CORNER MONUMENT



T 13 N, R 1 W

(B) COORDINATES:

GEOGRAPHIC (Degrees Minutes Decimal Seconds to 4 places):

LATITUDE: 43° 35' 48.4512"

LONGITUDE: 090° 26' 31.3179"

ELLIPSOID HT (m): -

HORIZONTAL DATUM: NAD 83 (2007)

ORTHOMETRIC HT (U.S. ft): -

VERTICAL DATUM: -

VERNON COUNTY (U.S. FEET)

Coord. Quality (+/-)

NORTHING (Y): 164,062.21

EASTING (X): 820,420.33

METHOD USED TO COMPUTE COORDINATES (check and complete as applicable):

(X) RTK Observations () Static Baselines () OPUS Solution (attach copy of OPUS report)

() Combination of conventional procedures with GPS observations to set temporary control

Was a Least Squares Adjustment Used to Compute Coordinate? No

For Non-OPUS Based Solutions, List the Control Stations Used for Coordinate Computations (a minimum of 2 different control stations or 2 different time combinations from the same control station are required):

Obs. #	Control Station Name	Station Coordinates (Lat/Long)	Date	Time
1	UNION C GPS	43°35'40.91250"/90°29'24.76793"	6/4/2011	11:41/11:51

* Please List Additional Control Stations Used on Back of Form

When a direct observation of the corner is not possible, and a combination of different GPS and/or conventional procedures must be used to determine coordinate values, provide a brief description of your procedures on the back of form.

(C) REASON FOR COORDINATE SUBMITTAL (check one):

- (X) Being Filed With a New U.S. PLS Monument Record
- () To Correct the Coordinates Listed on a Previously Filed PLS Monument Record
- () To Provide Coordinates for a Previously Filed PLS Monument Record without Coordinates
- () To Provide Supplemental Coordinates for a Previously Filed PLS Monument Record

R.L.S. & DATE OF PLS MONUMENT RECORD: _____

(D) AGENT(S) PERFORMING GPS OBSERVATIONS & COORDINATE COMPUTATION

1) Jay P. Adams

2)

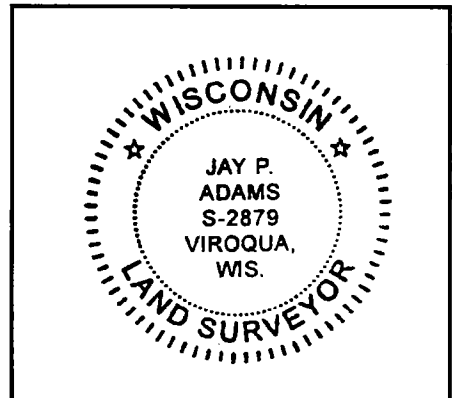
I, JAY P. ADAMS CERTIFY THAT THE COORDINATES PROVIDED ON THIS RECORD WERE DETERMINED BY ME OR UNDER MY DIRECTION AND CONTROL AND THAT THIS COORDINATE SUBMISSION FORM IS CORRECT AND COMPLETE TO THE BEST OF MY KNOWLEDGE AND BELIEF.

8/26/11

SIGNATURE

DATE

Seal



* Please Provide Any Additional Notes/Information on Back of Form

VERNON
COUNTY

Survey Monument Record

TYPE OF MONUMENT: 2 1/2" O.D. x 30" iron pipe

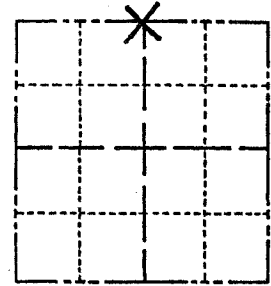
STATE PLANE COORDINATES: N _____
 E _____

ELEVATION — M.S.L. DATUM: _____

THETA ANGLE: _____

FIELD BOOK: _____ PAGE _____

CORNER NO. _____
 SECTION 24
 TOWN 13
 RANGE 1W



LOCATION
 (Indicated by 'X')

SEAL:



BASIS FOR MONUMENT LOCATION

(Use reverse side if necessary)

Show info such as: History of corner, with reference to Vol. and pg, dates, surveyor; exact description of monument replaced; if location computed, by taped or EDM traverse; landowner remarks, etc.

This corner was used as a tie for a 20' width easement to the SE 1/4 of the NE 1/4 of Section 23, T13N, R1W by others. We could find no monumentation at this location.

We accepted the intersection point of the fence going north and the fence going east as the true point and monumentated same.

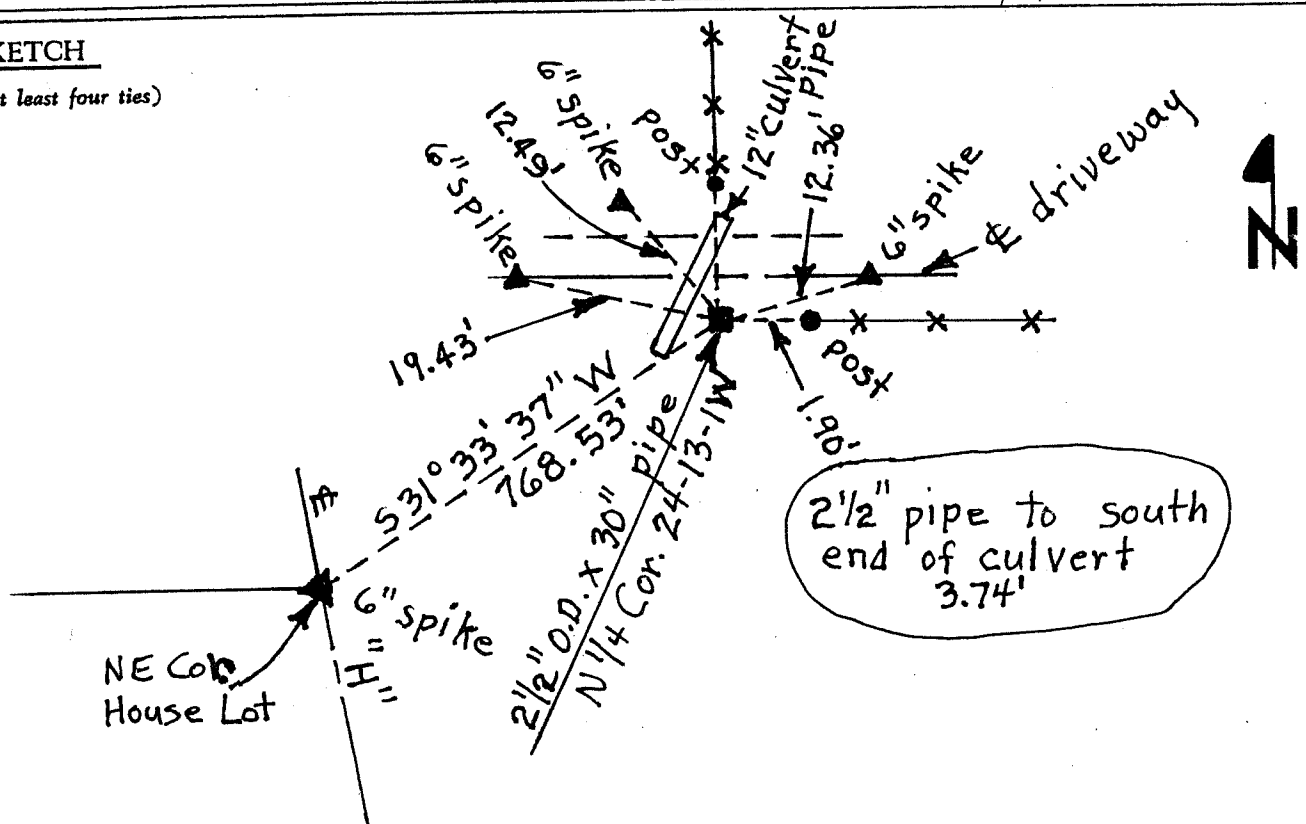
CERTIFIED CORRECT

Registered Land Surveyor

DATE: 11/3/10

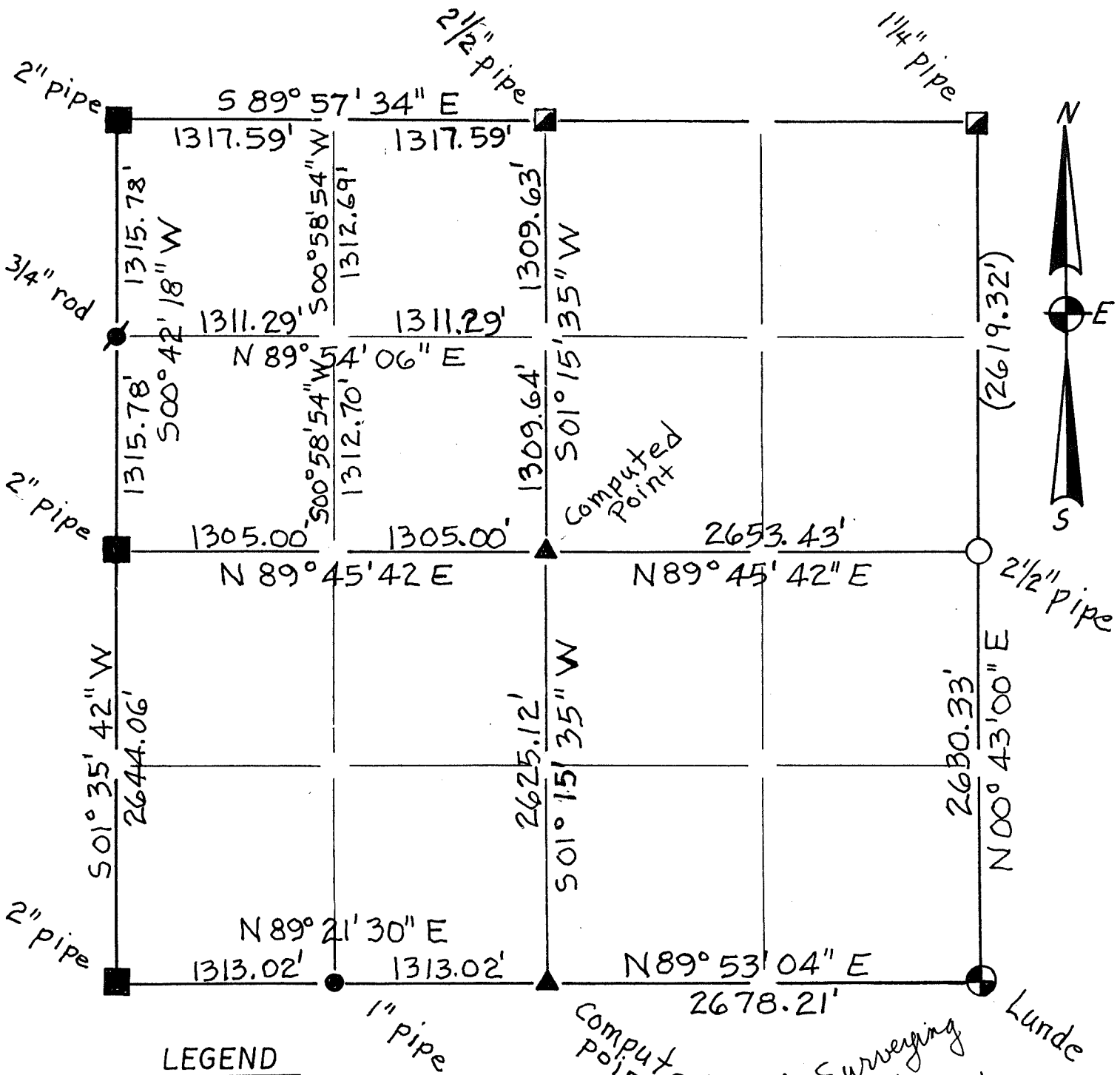
TIE SKETCH

(Show at least four ties)



Section Summary and Index

24 - 13 - 1W
 Section Town Range



LEGEND

- ⊕ - ~~Harrison cast iron monument.~~
- - ~~Stone or concrete monument.~~
- - Other

(2619.32') take from
another Section Summary

Carroll Surveying
 Mauston, Wis.
 Lunde

