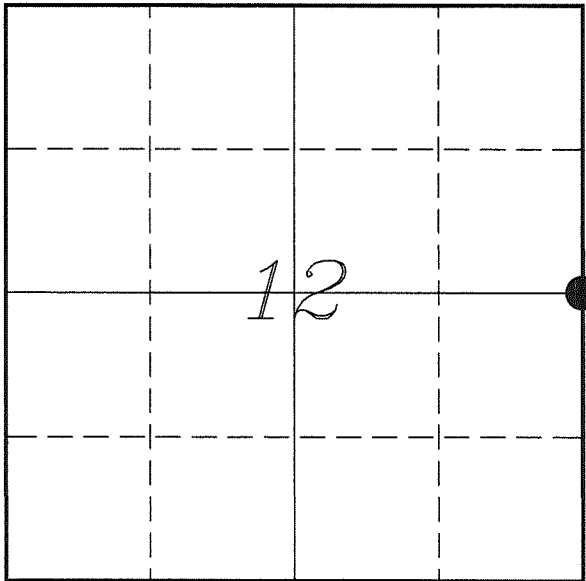


---

**U. S. PUBLIC LAND SURVEY MONUMENT RECORD**


---

**SECTION 12, T13N, R1W, TOWN OF UNION  
VERNON COUNTY, WISCONSIN**


*LOCATION OF LANDMARK*

Witnesses: Al Hoff

Date: 18 December 2017

VERNON COUNTY COORDINATE SYSTEM	
Northing	172119.285
Easting	822945.242
Datum	NAD 1983 (2011)
Elevation	
Datum	
TYPE OF LANDMARK:	
Set Lunde Monument 4" Brass Capped Iron Pipe	
BEARINGS ARE REFERENCED TO:	
Vernon County Coordinates (Survey Grade)	

*Eagle Ridge Surveying*  
PO Box 213  
Wilton, Wisconsin

---

*Describe any record evidence, monument evidence, testimonial evidence or any other material evidence you considered and whether the monument was found or restored through acceptance of an obliterated evidence location.*

No bearing trees of record were located.

Found the 1 1/2" iron pipe set by J Carroll. He set it at a 2-way fence corner.

This location is 2' South and 0.18' East of the straight line split.

Knower had re-established this corner at the mid-point and it is my belief that the fence corner represents his corner.

I accepted the iron pipe as the best available evidence of Knower's corner and therefore the original corner and replaced it with a Lunde Monument.

---

*Describe or show any material discrepancy between the location of the restored corner and that of the corner previously restored or re-established.*

Joshua Hathaway established this corner in May 1839.

Wm Knower was at this corner, in June 1879, during a survey in Section 12. He shows the corner as lost.

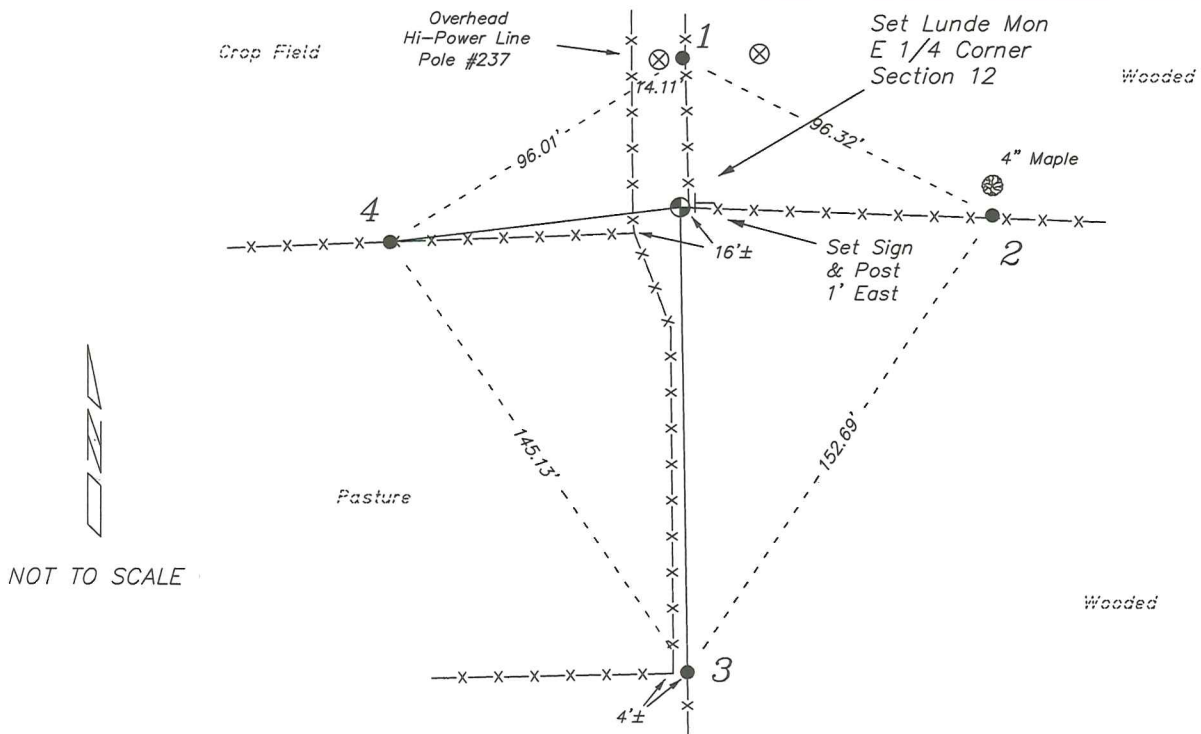
Wm Knower returned to this corner, in November 1887, during surveys in Sections 7 & 12. He shows he found the corner from the previous survey and shows an updated distance to the North.

James Carroll was at this corner, in August 1984, during a survey in Section 7. He shows that he set a 1 1/2" iron pipe.

Patrick Carroll was at this corner, in December 2000, May 2012 & May 2014, during surveys in Section 12. He shows that he found a 1 1/2" iron pipe.

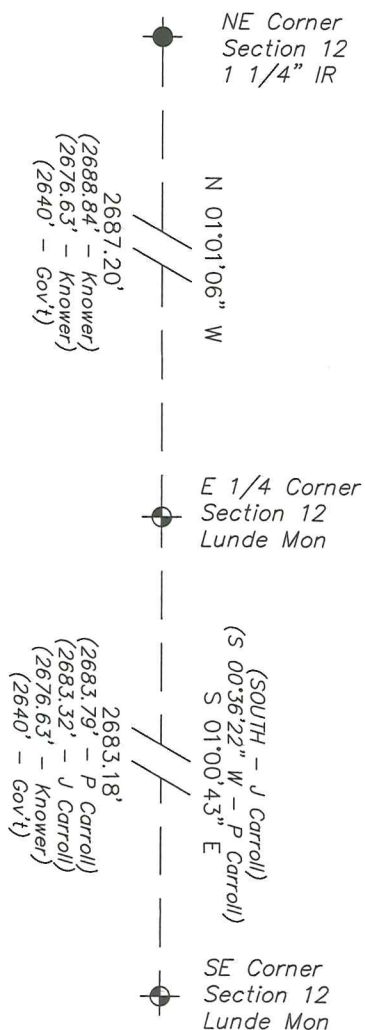
## RECORD OF DURABLE WITNESS MONUMENTS

NO	DESCRIPTION	BEARING	DISTANCE
1	Set 3/4" x 18" Iron Rod In Fence - 4' East of Pole #237	N 00°49'56" E	41.58'
2	Set 3/4" x 18" Iron Rod In Fence - 3' South of a 4" Maple	S 88°09'48" E	84.95'
3	Set 3/4" x 18" Iron Rod In Fence	S 00°56'10" E	129.33'
4	Set 3/4" x 18" Iron Rod In Tall Pasture Fence	S 82°57'16" W	81.03'



### PLAN VIEW DRAWING OF REFERENCE TIES

Map Showing Distance And Direction To Other Public Land Survey Corners Used For Re-Establishing The Corner



I, Laurence E Johns III PLS 2804, Professional Land Surveyor, hereby certify that the corner location shown on this record was determined by me or under my direction and control, and that this U.S. Public Land Survey Monument Record is correct and complete to the best of my knowledge and belief.