

# VERNON COUNTY U.S. PUBLIC LAND SURVEY MONUMENT RECORD

INSTRUCTIONS: THIS RECORD SHALL SHOW THE LOCATION OF THE CORNER AND SHALL INCLUDE ALL OF THE FOLLOWING ELEMENTS (A THROUGH I)

(A) IDENTIFY THE CORNER BY REFERENCE TO THE U.S. PUBLIC LAND SURVEY SYSTEM

■ = CORNER MONUMENT RESTORED

WITNESSES TO CORNER LOCATION:

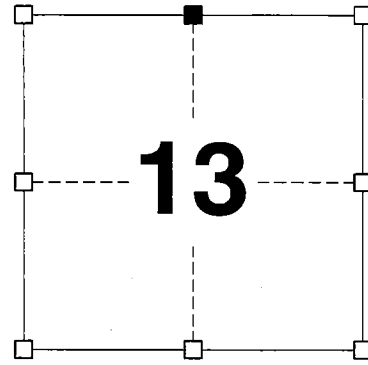
**JAY P. ADAMS  
GREGORY A. MILLER**

GEOGRAPHIC COORDINATES,  
NAD 83 (2007) ADJUSTMENT:

**LONGITUDE: 90° 26' 31.7507"  
LATITUDE: 43° 36' 40.7978"**

WISCONSIN COUNTY COORDINATE SYSTEM (WCCS), VERNON COUNTY,  
NAD 83 (2007) ADJUSTMENT:

**NORTHING: 169,362.57  
EASTING: 820,366.72**



**SECTION 13  
TOWN 13 NORTH, RANGE 1 WEST**

(B) DESCRIBE ANY RECORD EVIDENCE, MONUMENT EVIDENCE, OCCUPATIONAL EVIDENCE, TESTIMONIAL EVIDENCE, OR ANY OTHER MATERIAL EVIDENCE YOU CONSIDERED, AND WHETHER THE MONUMENT WAS FOUND OR PLACED.

**I COULD FIND NO MONUMENTS OR BEARING TREES FROM THE ORIGINAL GOVERNMENT SURVEY OR KNOWER'S SUBSEQUENT RESURVEYS. I WAS NOT ABLE TO FIND THE 3/4-INCH DIAMETER IRON ROD SET BY JANIAK BUT RECOVERED TWO OF HIS SPIKE TIES SET IN TREES. THERE IS NOW A FENCE EAST AND WEST WITH FENCE REMAINS RUNNING NORTH FROM THE CORNER. I ACCEPTED THIS LOCATION AS THE BEST AVAILABLE EVIDENCE OF THE ORIGINAL GOVERNMENT CORNER AND REMONUMENTED IT WITH A VERNON COUNTY LUNDE MONUMENT.**

(C) IN THE PLAN VIEW DRAWING BELOW, PROVIDE REFERENCE TIES TO AT LEAST 4 WITNESS MONUMENTS, (WITNESS MONUMENTS SHALL BE MADE OF CONCRETE, NATURAL STONE, IRON OR ANY OTHER EQUALLY DURABLE MATERIAL.) DESCRIBE WITNESS MONUMENTS.

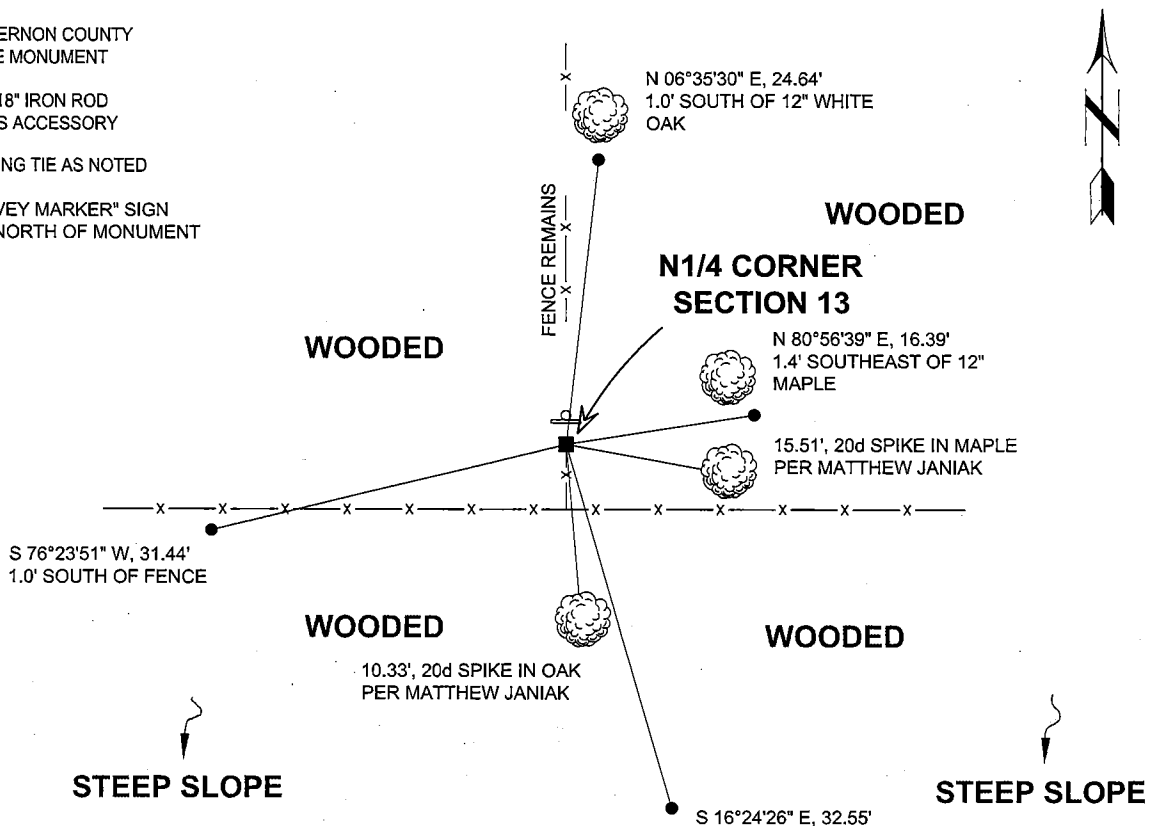
(D) SHOW A PLAN VIEW DRAWING DEPICTING THE RELEVANT MONUMENTS AND REFERENCE TIES, WHICH IS SUFFICIENTLY DETAILED TO ENABLE ACCURATE RELOCATION OF THE CORNER MONUMENT IF IT IS DISTURBED.

■ SET VERNON COUNTY LUNDE MONUMENT

● 3/4" x 18" IRON ROD SET AS ACCESSORY

○ EXISTING TIE AS NOTED

□ "SURVEY MARKER" SIGN 1' +/- NORTH OF MONUMENT



(E) DESCRIBE ANY MATERIAL DISCREPANCY BETWEEN THE LOCATION OF THE CORNER AS RESTORED OR REESTABLISHED AND THE LOCATION OF THAT CORNER AS PREVIOUSLY RESTORED OR REESTABLISHED BY DISTANCE AND DIRECTION. SHOW THE DISCREPANCY ON THE PLAN VIEW DRAWING UNDER (D), ABOVE. SHOW THE DISTANCES BETWEEN THE CORNER AS PREVIOUSLY RESTORED OR REESTABLISHED AND (1) THE CORNER AS RESTORED OR REESTABLISHED, AND (2) TO AT LEAST 2 OF THE WITNESS MONUMENTS SHOWN ON THE DRAWING IN (D) ABOVE.

N/A

(F) WAS THE CORNER RESTORED THROUGH ACCEPTANCE OF (1) AN OBLITERATED EVIDENCE LOCATION, OR, (2) A FOUND PERPETUATED LOCATION?

**(2) A FOUND PERPETUATED LOCATION**

(G&H) WAS THE CORNER REESTABLISHED THROUGH LOST CORNER PROPORTIONATE METHODS? IF SO, SHOW THE METHOD, INCLUDING THE DIRECTIONS AND DISTANCES TO OTHER PUBLIC LAND SURVEY CORNERS USED AS EVIDENCE OR USED FOR PROPORTIONING IN DETERMINING THE CORNER LOCATION.

N/A

CORNER HISTORY

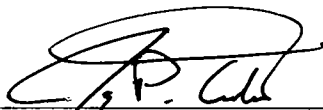
**ORIGINAL GOVERNMENT CORNER ESTABLISHED BY A.L. BROWN IN JANUARY 1846.**

**WILLIAM KNOWER UTILIZED THE GOVERNMENT CORNER IN A SURVEY DURING JUNE OF 1878 AND ALSO USED THE CORNER IN A SURVEY DATED FEBRUARY OF 1879. HE FURTHER REPORTED FINDING THE GOVERNMENT CORNER AND TOOK NEW BEARING TREES AT THIS LOCATION WHILE PERFORMING A SURVEY IN DECEMBER OF 1887.**

**IN A TIE SHEET DATED 30 SEPTEMBER 1991, MATTHEW JANIAK REPORTED SETTING A 3/4-INCH DIAMETER IRON ROD AT A TWO WAY FENCE INTERECTION.**

AFFIX LAND SURVEYOR SEAL

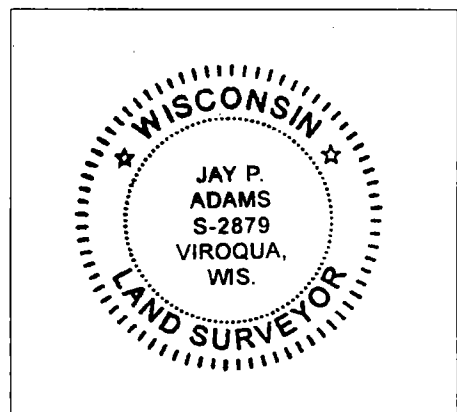
(I) I, JAY P. ADAMS, R.L.S. 2879, CERTIFY THAT THE CORNER LOCATION SHOWN ON THIS RECORD WAS DETERMINED BY ME OR UNDER MY DIRECTION AND CONTROL AND THAT THIS U.S. PUBLIC LAND SURVEY MONUMENT RECORD IS CORRECT AND COMPLETE TO THE BEST OF MY KNOWLEDGE AND BELIEF.



SIGNATURE

8/29/11

DATE

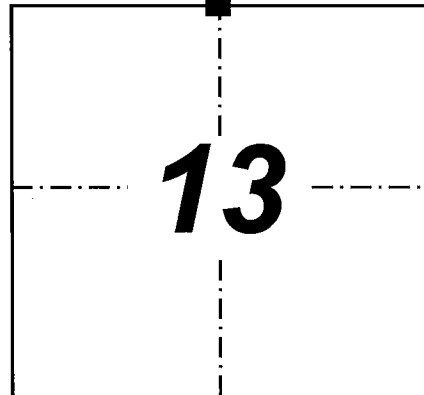


**VERNON COUNTY COORDINATE FORM**  
 "As An Addendum To"  
 A CERTIFIED U.S. PUBLIC LAND SURVEY MONUMENT RECORD

INSTRUCTIONS: THIS RECORD FORM SHOULD BE USED WHEN COORDINATES ARE PROVIDED FOR A PUBLIC LAND SURVEY CORNER AND SHALL INCLUDE ALL OF THE FOLLOWING ELEMENTS (A-D)

(A) IDENTIFY THE CORNER BY REFERENCE TO THE U.S. PUBLIC LAND SURVEY SYSTEM IN DIAGRAM AT RIGHT

■ = CORNER MONUMENT



T 13 N, R 1 W

(B) COORDINATES:

GEOGRAPHIC (Degrees Minutes Decimal Seconds to 4 places):

LATITUDE: **43° 36' 40.7978"**

LONGITUDE: **090° 26' 31.7507"**

ELLIPSOID HT (m): -

HORIZONTAL DATUM: **NAD 83 (2007)**

ORTHOMETRIC HT (U.S. ft): -

VERTICAL DATUM: -

VERNON COUNTY (U.S. FEET)

Coord. Quality (+/-)

NORTHING (Y): **169,362.57**

EASTING (X): **820,366.72**

METHOD USED TO COMPUTE COORDINATES (check and complete as applicable):

RTK Observations     Static Baselines     OPUS Solution (attach copy of OPUS report)

Combination of conventional procedures with GPS observations to set temporary control

Was a Least Squares Adjustment Used to Compute Coordinate? **No**

For Non-OPUS Based Solutions, List the Control Stations Used for Coordinate Computations (a minimum of 2 different control stations or 2 different time combinations from the same control station are required):

Obs. #	Control Station Name	Station Coordinates (Lat/Long)	Date	Time
1	UNION C GPS	43°35'40.91250"/90°29'24.76793"	6/4/2011	8:46/9:02

\* Please List Additional Control Stations Used on Back of Form

**When a direct observation of the corner is not possible, and a combination of different GPS and/or conventional procedures must be used to determine coordinate values, provide a brief description of your procedures on the back of form.**

(C) REASON FOR COORDINATE SUBMITTAL (check one):

- Being Filed With a New U.S. PLS Monument Record
- To Correct the Coordinates Listed on a Previously Filed PLS Monument Record
- To Provide Coordinates for a Previously Filed PLS Monument Record without Coordinates
- To Provide Supplemental Coordinates for a Previously Filed PLS Monument Record

R.L.S. & DATE OF PLS MONUMENT RECORD: \_\_\_\_\_

(D) AGENT(S) PERFORMING GPS OBSERVATIONS & COORDINATE COMPUTATION

1) Jay P. Adams

2)

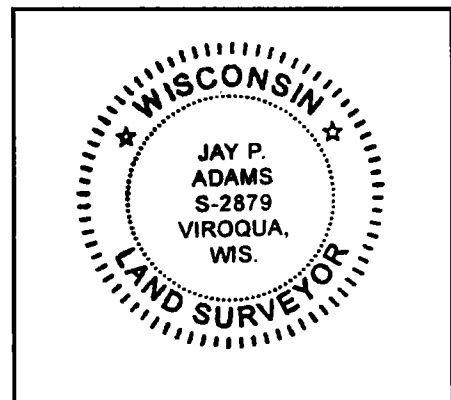
I, **JAY P. ADAMS** CERTIFY THAT THE COORDINATES PROVIDED ON THIS RECORD WERE DETERMINED BY ME OR UNDER MY DIRECTION AND CONTROL AND THAT THIS COORDINATE SUBMISSION FORM IS CORRECT AND COMPLETE TO THE BEST OF MY KNOWLEDGE AND BELIEF.

8/29/11

SIGNATURE

DATE

Seal



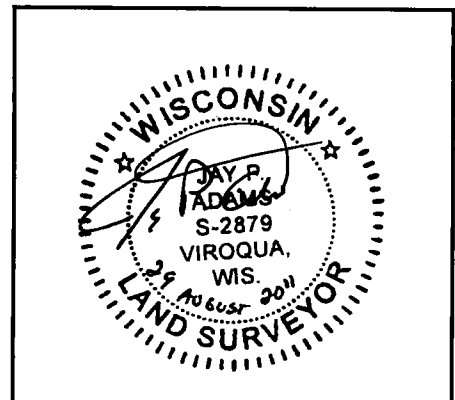
\* Please Provide Any Additional Notes/Information on Back of Form

VERNON COUNTY COORDINATE FORM  
"As An Addendum To"  
A CERTIFIED U.S. PUBLIC LAND SURVEY MONUMENT RECORD

Surveyor's Note:

Direct GPS observations at the North 1/4 Corner of Section 13 were not possible because of forest canopy. The Lunde monument, ties and features displayed on the monument record were shot by total station from control points Southeast of the corner where GPS observations were possible.

Seal



\* Please Provide Any Additional Notes/Information on Back of Form

Date of last revision: 12/1/2008

Approved by LIC: 12/1/2008

OCT 15 1997

# GOVERNMENT CORNER RECORD

NORTH 1/4 CORNER, SECTION 13, TOWNSHIP 13 NORTH, RANGE 1 EAST WEST,

TOWN, CITY OR VILLAGE OF UNION, VERNON COUNTY

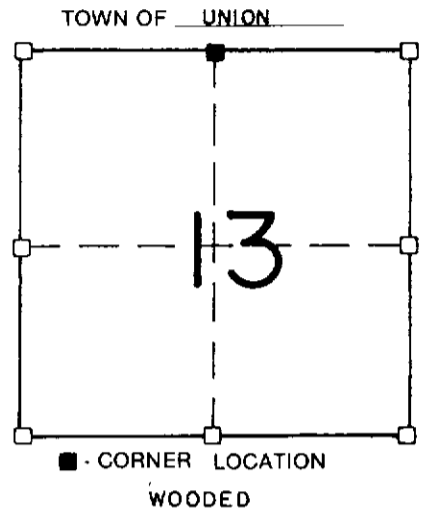
TYPE OF MONUMENT: 3/4" diameter iron rod ELEVATION - M.S.L. DATUM

WITNESSES TO CORNER LOCATION

SECTION 13, T. 13 N, R. 1 EW

PAT DIEDERICH

MATT HEW JANIAK



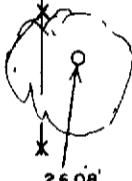
TIE SKETCH (SHOW ALL HELPFUL FEATURES)

WOODED

20# POLE SPIKE  
N.E./S 9" MAPLE



20# POLE SPIKE  
E/S 11" WHITE OAK



20# POLE SPIKE  
S/S 12" MAPLE



20# POLE SPIKE  
W/S 11" B OAK



STEEP

HILLSIDE

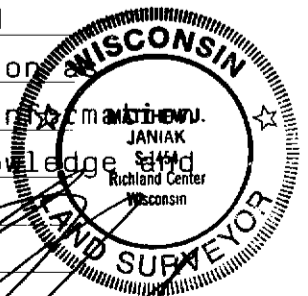
WOODED

WOODED

SURVEYOR'S CERTIFICATE

SEAL S- 1454

I, Matthew J. Janiak, DO HEREBY CERTIFY THAT I have established  
 the above corner at the location of physical occupation  
 there is no other available evidence, and that this information  
 is correct and true to the best of my information, knowledge and  
 belief.



DATED THIS 30th DAY OF SEPT, 1991

REGISTERED LAND SURVEYOR

19