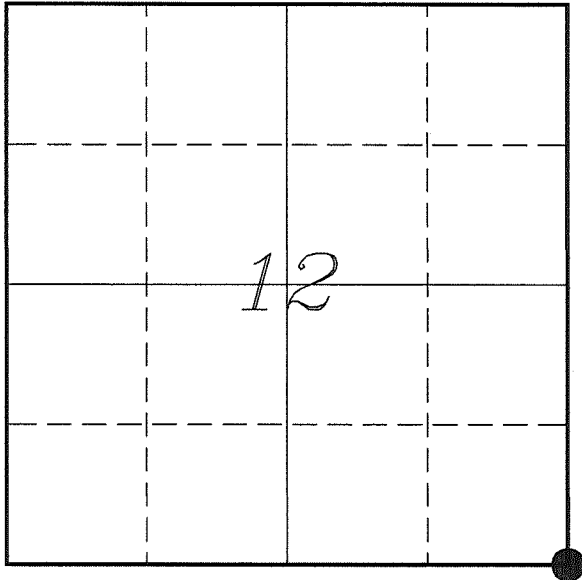


U. S. PUBLIC LAND SURVEY MONUMENT RECORD

**SECTION 12, T13N, R1W, TOWN OF UNION
VERNON COUNTY, WISCONSIN**



LOCATION OF LANDMARK

VERNON COUNTY COORDINATE SYSTEM	
Northing	169436.524
Easting	822992.627
Datum	NAD 1983 (2011)
Elevation	
Datum	
TYPE OF LANDMARK:	
Set Lunde Monument 4" Brass Capped Iron Pipe	
BEARINGS ARE REFERENCED TO:	
Vernon County Coordinates (Survey Grade)	

Witnesses: Laurence E Johns III
Al Hoff

Eagle Ridge Surveying
PO Box 213
Wilton, Wisconsin

Date: 17 December 2017

Describe any record evidence, monument evidence, testimonial evidence or any other material evidence you considered and whether the monument was found or restored through acceptance of an obliterated evidence location.

No bearing trees of record were located.

Found the 1 1/2" iron pipe set by J Carroll. It is located at a 4-way fence corner.

Distances North & South match Knower's distances within a couple of feet. It is my opinion that the fence corner represents the corner found by Knower. Knower indicated on his survey that he found the government corner.

I accepted the iron pipe as the best available evidence of the original government corner and replaced it with a Lunde Monument.

Describe or show any material discrepancy between the location of the restored corner and that of the corner previously restored or re-established.

Joshua Hathaway established this corner in May 1839.

Wm Knower was at this corner, in June 1879, during surveys in Sections 12 & 13. He shows that he found the government corner.

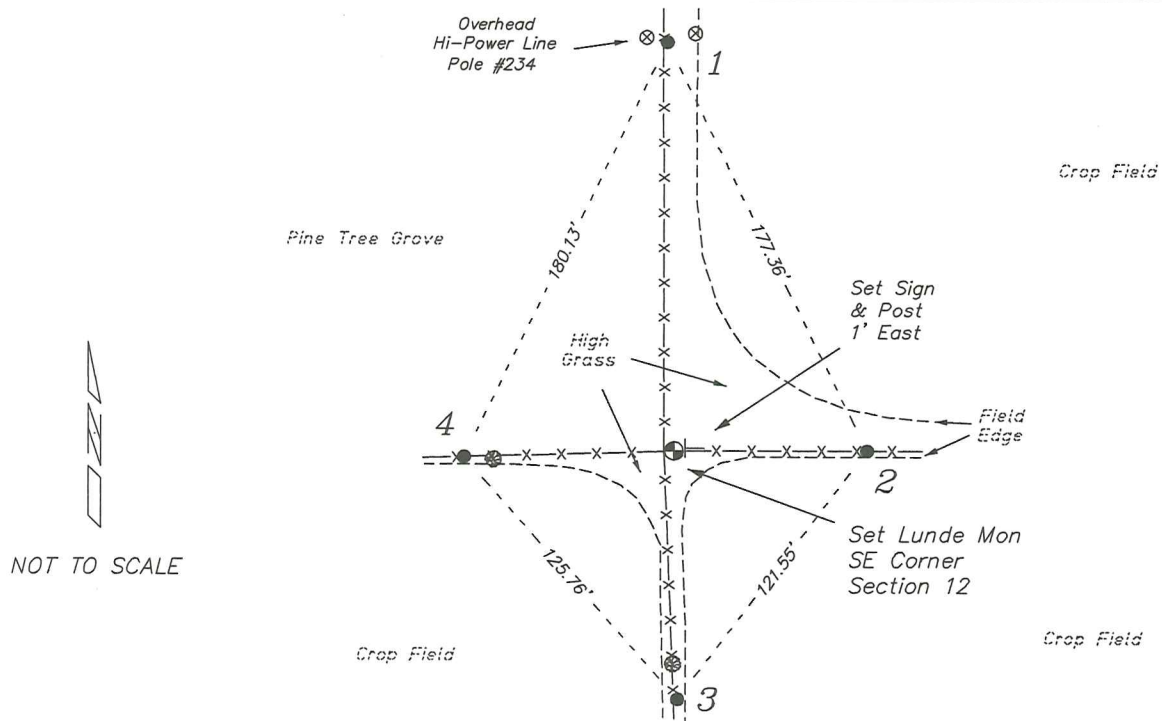
Wm Knower returned to this corner, in November 1887, during surveys in Sections 7 & 12. He shows he again found the government corner.

James Carroll was at this corner, in August 1984, during a survey in Section 7. He shows that he set a 1 1/2" iron pipe.

Patrick Carroll was at this corner, in August 2000, December 2000, December 2010, May 2012 & May 2014, during surveys in Sections 12 & 18. He shows that he found a 1 1/2" iron pipe.

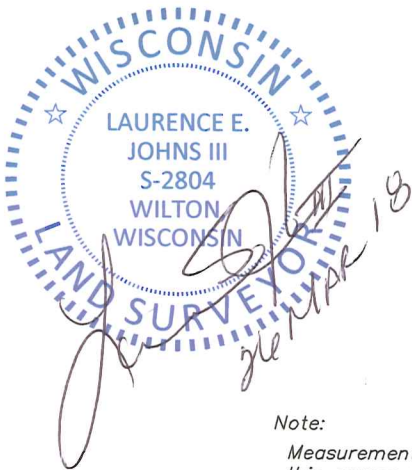
RECORD OF DURABLE WITNESS MONUMENTS

NO	DESCRIPTION	BEARING	DISTANCE
1	Set 3/4" x 18" Iron Rod In Fence - 10' South of Pole #234	N 00°56'26" W	159.57'
2	Set 3/4" x 18" Iron Rod In Fence Line	N 89°56'17" E	75.00'
3	Set 3/4" x 18" Iron Rod In Fence - 5' South of a 6" Apple	S 00°51'41" E	96.70'
4	Set 3/4" x 18" Iron Rod In Fence - 5' West of a 6" Ash	S 88°22'37" W	81.69'

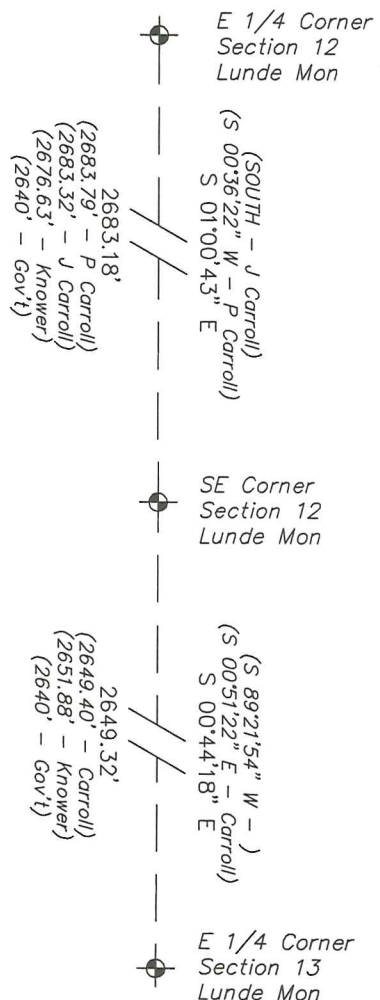


PLAN VIEW DRAWING OF REFERENCE TIES

Map Showing Distance And Direction To Other Public Land Survey Corners Used For Re-Establishing The Corner



Note:
 Measurements were not made to this corner at this time.
 Bearings and distances shown are based on recorded information and shown for reference.



I, Laurence E Johns III PLS 2804, Professional Land Surveyor, hereby certify that the corner location shown on this record was determined by me or under my direction and control, and that this U.S. Public Land Survey Monument Record is correct and complete to the best of my knowledge and belief.

VERNON COUNTY

OCT 02 2000

CORNER NO. _____
SECTION 18
TOWN T13N
RANGE R1E
GREENWOOD

Survey Monument Record

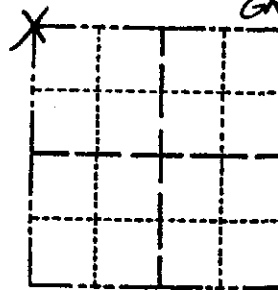
TYPE OF MONUMENT: 1 1/2" IRON PIPE FIP

STATE PLANE COORDINATES: N _____
E _____

ELEVATION — M.S.L. DATUM: _____

THETA ANGLE: _____

FIELD BOOK: _____ PAGE _____



LOCATION
(Indicated by 'X')

SEAL:



BASIS FOR MONUMENT LOCATION

(Use reverse side if necessary)

Show info such as: History of corner, with reference to Vol. and pg. dates, surveyor; exact description of monument replaced; if location computed, by taped or EDM traverse; landowner remarks, etc.

I accepted the 1 1/2" PIPE FIP at the fence intersection as the best location for the NW section corner.

CERTIFIED CORRECT:

Patrick A. Carroll

Registered Land Surveyor

DATE: 8/9/00

TIE SKETCH

(Show at least four ties)

