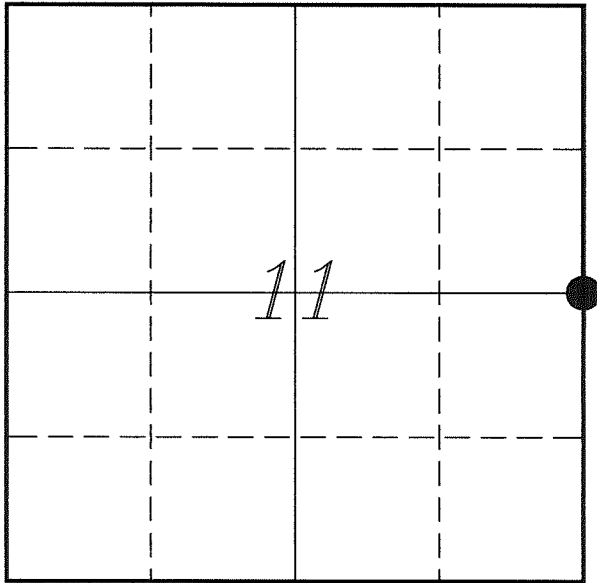

U. S. PUBLIC LAND SURVEY MONUMENT RECORD

**SECTION 11, T13N, R1W, TOWN OF UNION
VERNON COUNTY, WISCONSIN**

LOCATION OF LANDMARK

VERNON COUNTY COORDINATE SYSTEM	
Northing	171903.382
Easting	817655.556
Datum	NAD 1983 (2011)
Elevation	
Datum	
TYPE OF LANDMARK:	
Existing 1 1/4" Iron Rod	
BEARINGS ARE REFERENCED TO:	
Vernon County Coordinates (Survey Grade)	

Witnesses: Laurence E Johns III
Al Hoff

Eagle Ridge Surveying
PO Box 213
Wilton, Wisconsin

Date: 31 May 2018

Describe any record evidence, monument evidence, testimonial evidence or any other material evidence you considered and whether the monument was found or restored through acceptance of an obliterated evidence location.

No bearing trees of record were located.

Found the 1 1/4" iron rod shown on Carroll's latest surveys. There is no mention of the origin of the monument, and I found no record of it.

The monument matches other corners shown on the surveys. It matches the centerline of CTH 'V' to the East. It is located 2.1 feet West and 10.6 feet North of the straight line/split between section corners.

It appears to me that the location of the corner is an attempt to establish this corner on a straight line and matching occupation of the centerline of CTH 'V'.

I found no evidence to disagree with this location and it matches what occupation that could be found. I accepted the location of the iron rod as the best available evidence of the original government corner.

Since the corner lands in the middle of a state highway I left it in place.

Describe or show any material discrepancy between the location of the restored corner and that of the corner previously restored or re-established.

Alfred L Brown established this corner in January 1846.

Wm Knower was at this corner, in October 1887, during a survey in Section 12. He shows he found the government corner.

Wm Knower was at this corner again, in November 1899, during a survey in Section 11. He shows he used the corner from the previous survey.

Herman Hovelsrud was at this corner, in March 1972 & October 1977, during surveys in Section 11. He does not show a monument at this corner.

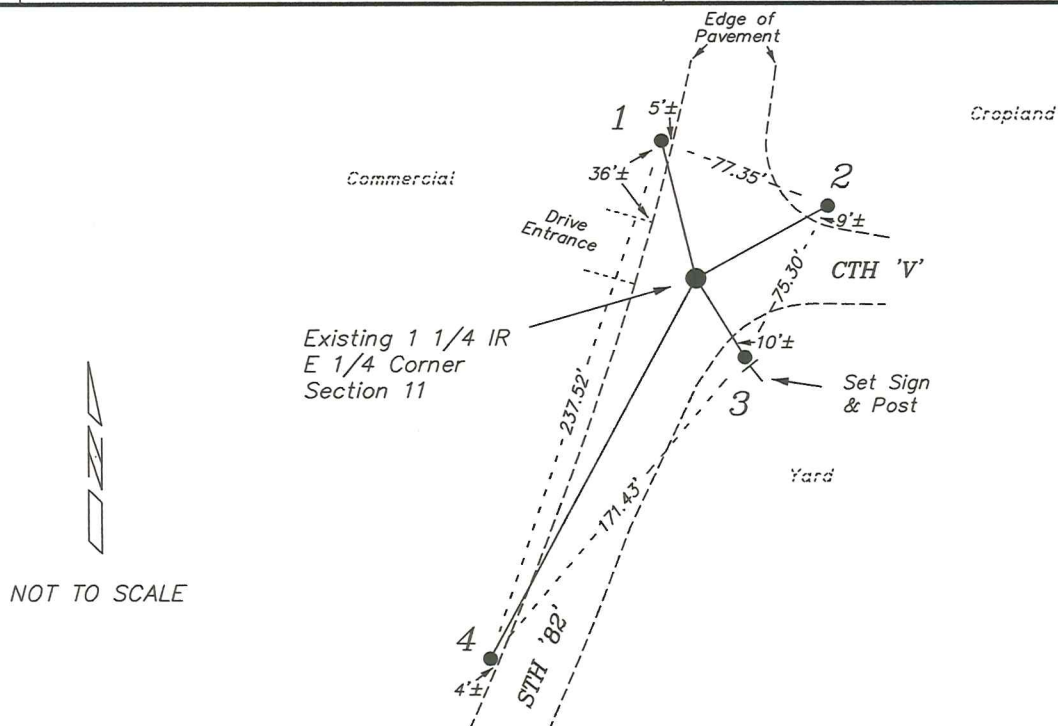
James Carroll was at this corner, in April 1990, during a survey in Section 11. He shows he set a harrow spike.

Patrick Carroll was at this corner, in November 2001 & April 2003, during surveys in Section 11. He shows he found a railroad spike.

Patrick Carroll was at this corner again, in July 2006, May 2008 & June 2011, during surveys in Section 12. He shows he found a 1 1/4" iron rod.

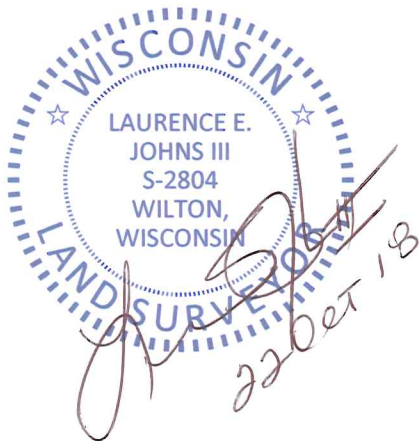
RECORD OF DURABLE WITNESS MONUMENTS

NO	DESCRIPTION	BEARING	DISTANCE
1	Set 3/4" x 18" Iron Rod 1' South of Co Rd V Junction Sign	N 13°47'31" W	61.85'
2	Set 3/4" x 18" Iron Rod 1' West of Stop Sign	N 61°05'43" E	65.29'
3	Set 3/4" x 18" Iron Rod 1' North of Co Rd V Junction Sign	S 31°19'51" E	40.38'
4	Set 3/4" x 18" Iron Rod 1' West of Hwy 82 Sign	S 28°31'43" W	188.11'



PLAN VIEW DRAWING OF REFERENCE TIES

Map Showing Distance And Direction To Other Public Land Survey Corners Used For Re-Establishing The Corner



Note:
 Measurements were not made to this corner at this time.
 Bearings and distances shown are based on recorded information and shown for reference.

I, Laurence E Johns III PLS 2804, Professional Land Surveyor, hereby certify that the corner location shown on this record was determined by me or under my direction and control, and that this U.S. Public Land Survey Monument Record is correct and complete to the best of my knowledge and belief.

