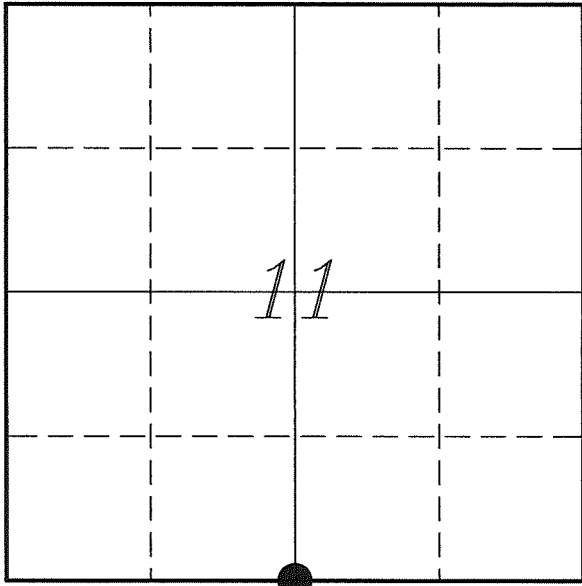

U. S. PUBLIC LAND SURVEY MONUMENT RECORD

SECTION 11, T13N, R1W, TOWN OF UNION
VERNON COUNTY, WISCONSIN



LOCATION OF LANDMARK

Witnesses: Al Hoff

Date: 11 June 2018

VERNON COUNTY COORDINATE SYSTEM	
Northing	169252.254
Easting	815072.431
Datum	NAD 1983 (2011)
Elevation	
Datum	
TYPE OF LANDMARK:	
Set Lunde Monument 4" Brass Capped Iron Pipe	
BEARINGS ARE REFERENCED TO:	
Vernon County Coordinates (Survey Grade)	

Eagle Ridge Surveying
PO Box 213
Wilton, Wisconsin

Describe any record evidence, monument evidence, testimonial evidence or any other material evidence you considered and whether the monument was found or restored through acceptance of an obliterated evidence location.

No bearing trees of record were located.

Found the 1 1/2" iron pipe at a 3-way fence corner as shown on Walsh's tie sheet. Did not find any of his ties.

Distances did match well with government notes. It was short to the East as compared to Knower's notes, by about 54 feet, possibly a dropped pin during measurement.

Since the iron pipe is supported by occupation and matching government notes well, I accepted the pipe as the best available evidence of the original government corner and replaced it with a Lunde Monument.

Describe or show any material discrepancy between the location of the restored corner and that of the corner previously restored or re-established.

Alfred L Brown established this corner in January 1846.

Wm Knower was at this corner, in November 1899, during a survey in Section 11. He shows he found the government corner.

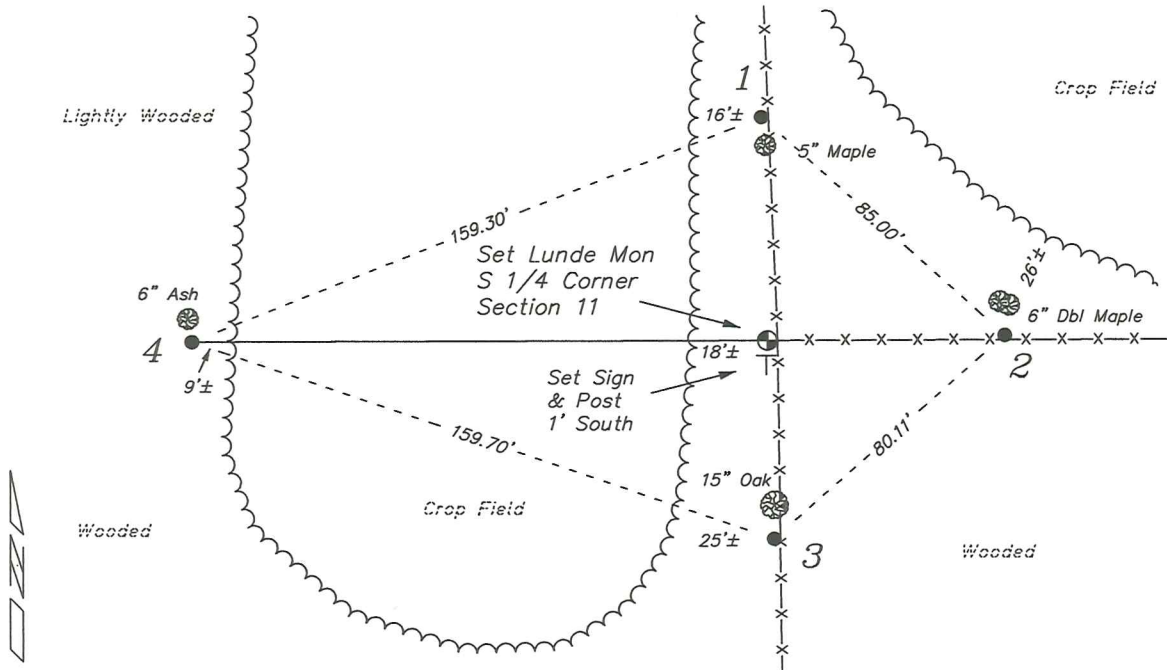
Matthew Janiak was at this corner, in August 1991, during a survey in Section 14. He shows he found a 1 1/2" iron pipe.

Sean Walsh was at this corner, in September 1991. He shows he found a 1 1/2" iron pipe and prepared a tie sheet.

Gergory Fauerbach was at this corner, in May 1997, during a survey in Section 14. He shows he found a 1" ID iron pipe.

RECORD OF DURABLE WITNESS MONUMENTS

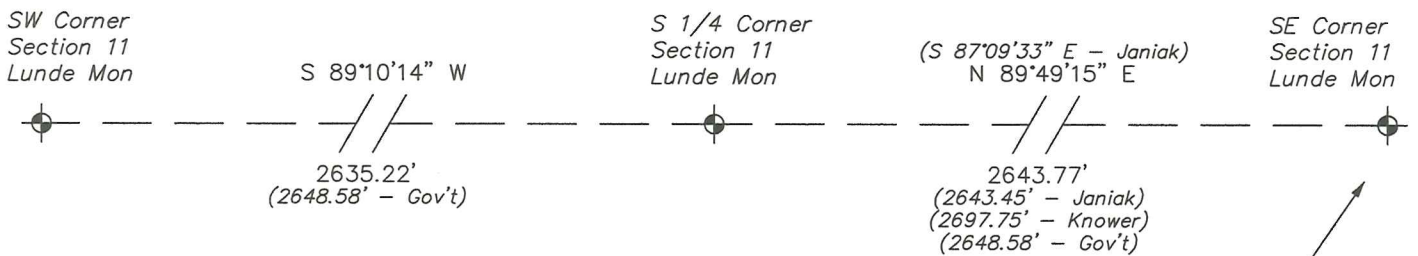
NO	DESCRIPTION	BEARING	DISTANCE
1	Set 3/4" x 18" Iron Rod In Fence - 3' North of a 5" Maple	N 01°33'16" W	58.32'
2	Set 3/4" x 18" Iron Rod In Fence - 4' South of a 6" Dbl Maple	N 88°38'14" E	61.65'
3	Set 3/4" x 18" Iron Rod In Fence - 2' South of a 15" Oak	S 01°50'35" E	51.67'
4	Set 3/4" x 18" Iron Rod 2' South of a 6" Ash	S 89°48'14" W	149.63'



NOT TO SCALE

PLAN VIEW DRAWING OF REFERENCE TIES

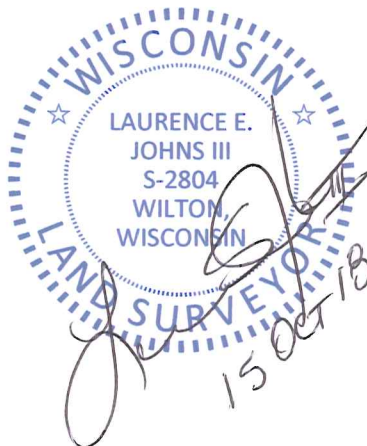
Map Showing Distance And Direction To Other Public Land Survey Corners Used For Re-Establishing The Corner



Note:

Measurements were not made to this corner at this time.

Bearings and distances shown are based on recorded information and shown for reference.



I, Laurence E Johns III PLS 2804, Professional Land Surveyor, hereby certify that the corner location shown on this record was determined by me or under my direction and control, and that this U.S. Public Land Survey Monument Record is correct and complete to the best of my knowledge and belief.

OCT 15 1991

GOVERNMENT CORNER RECORD

N. 1/4 CORNER, SECTION 14, TOWNSHIP 13 NORTH, RANGE 1 EAST - WEST,

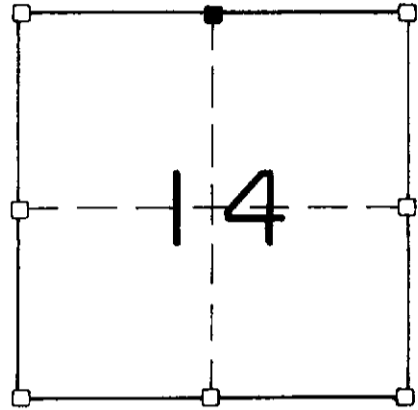
TOWN, CITY OR VILLAGE OF UNION, VERNON COUNTY

TYPE OF MONUMENT: 1 1/2" IRON PIPE ELEVATION - M.S.L. DATUM

WITNESSES TO CORNER LOCATION

SECTION 14, T. 13 N, R. 1 SW

TOWN OF UNION

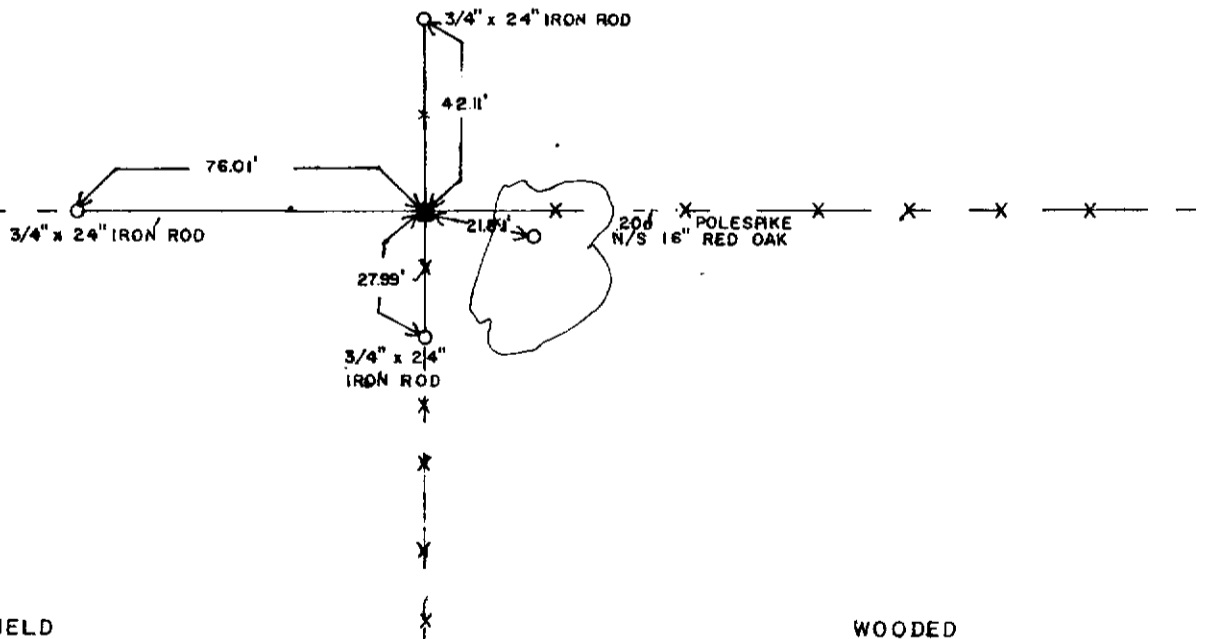


NORTH

TIE SKETCH (SHOW ALL HELPFUL FEATURES)

FIELD

FIELD



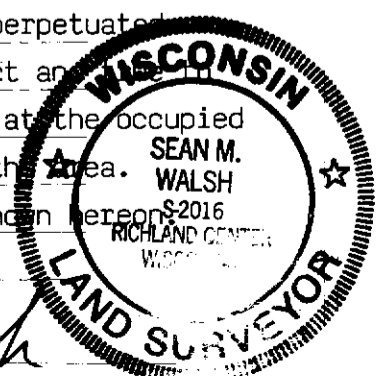
FIELD

WOODED

SURVEYOR'S CERTIFICATE

SEAL S. 2016

I, Sean M. Walsh, DO HEREBY CERTIFY THAT I have accepted and perpetuated the above corner as shown hereon and that this information is correct and true to the best of my information, knowledge and belief. I found this pipe at the occupied corner, this location fits very well with other section corners in the area. I accepted this as the best available evidence and perpetuated as shown hereon.



DATED THIS 23RD DAY OF SEPTEMBER, 19 91

Sean M. Walsh
 REGISTERED LAND SURVEYOR

20