

*U.S. PUBLIC LAND SURVEY MONUMENT RECORD*

VERNON COUNTY COORDINATE SYSTEM  
NORTHING: 171769.8340  
EASTING: 804484.9864  
DATUM: NAD1983(2011)  
CORNER TYPE: TIES ONLY

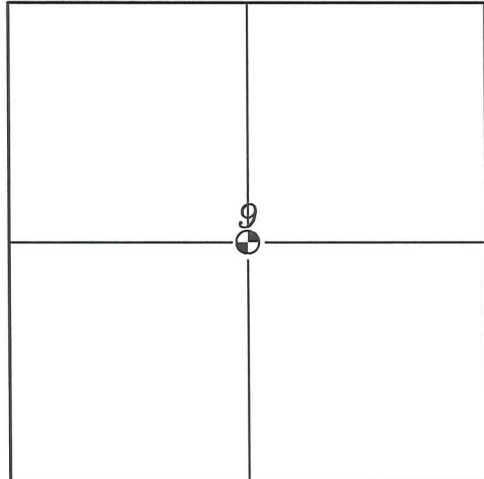
⊕ CORNER LOCATION

CREW/WHITNESS FOR CORNER LOCATION  
-CHRISTIAN J. RUNNING  
-

DATE: 9/19/18

ALL BEARINGS ARE REFERENCED TO  
THE VERNON COUNTY COORDINATE SYSTEM

COORDINATES ARE SURVEY GRADE



*SECTION 9, T13N, R1W  
TOWN OF UNION  
VERNON COUNTY  
WISCONSIN.*

DESCRIBE ANY RECORD EVIDENCE, MONUMENT EVIDENCE, TESTIMONIAL EVIDENCE, OR ANY OTHER MATERIAL EVIDENCE YOU CONSIDERED AND WHETHER THE MONUMENT WAS FOUND OR RESTORED THROUGH ACCEPTANCE OF AN OBLITERATED EVIDENCE LOCATION.

-EGBERT WYMAN MARKED A 10" MAPLE N63°E 3 LINKS FOR THE TIE TO THE C 1/4 OF SECTION 9. I FOUND A 26" MAPLE WITH WIRE GOING NORTH AND WEST. I MEASURED TO THE TREE AND COMPUTED THE CENTER, AND USED WYMAN'S TIE BEARING AND DISTANCE FOR MY CORNER. THE CORNER FALLS IN THE TREE SO NO MONUMENT WAS SET.

DESCRIBE OR SHOW ANY MATERIAL DISCREPANCY BETWEEN THE LOCATION OF THE RESTORED CORNER AND THAT OF THE CORNER PREVIOUSLY RESTORED OR RE-ESTABLISHED.

-1887  
EGBERT WYMAN MARKED THE CENTER OF SECTION 9 AND MARKED 2 TREES.

I, CHRISTIAN J. RUNNING, PROFESSIONAL LAND SURVEYOR, HEREBY CERTIFY THAT THE CORNER LOCATION SHOWN ON THIS RECORD WAS DETERMINED BY ME OR UNDER MY DIRECTION AND CONTROL, AND THAT THIS U.S. PUBLIC LAND SURVEY MONUMENT RECORD IS CORRECT AND COMPLETE TO THE BEST OF MY KNOWLEDGE AND BELIEF.

CHRISTIAN J. RUNNING  
PLS 2558

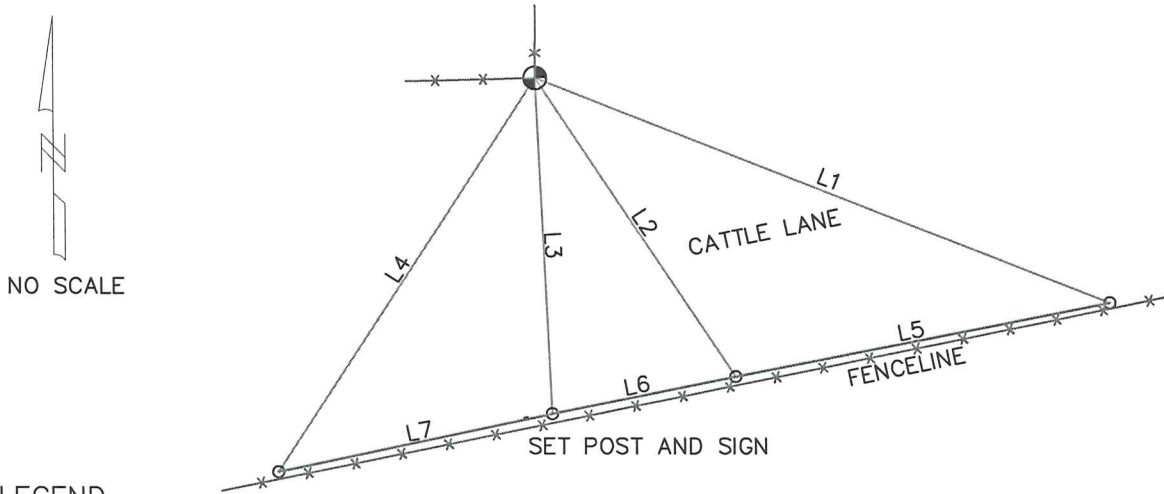


# U.S. PUBLIC LAND SURVEY MONUMENT RECORD

## RECORD OF WITNESS MONUMENTS

LINE	BEARING	DISTANCE	DESCRIPTION
L1	N68°35'31"W	64.51'	SET 3/4 X 18" IRON BAR IN PASTURE FENCELINE
L2	S33°34'27"E	37.63'	SET 3/4 X 18" IRON BAR IN PASTURE FENCELINE
L3	S02°37'59"E	35.32'	SET 3/4 X 18" IRON BAR IN PASTURE FENCELINE
L4	S33°08'35"W	49.46'	SET 3/4 X 18" IRON BAR IN PASTURE FENCELINE
L5	S78°45'08"W	40.02'	
L6	N78°26'09"E	19.58'	
L7	N77°55'00"E	29.31'	

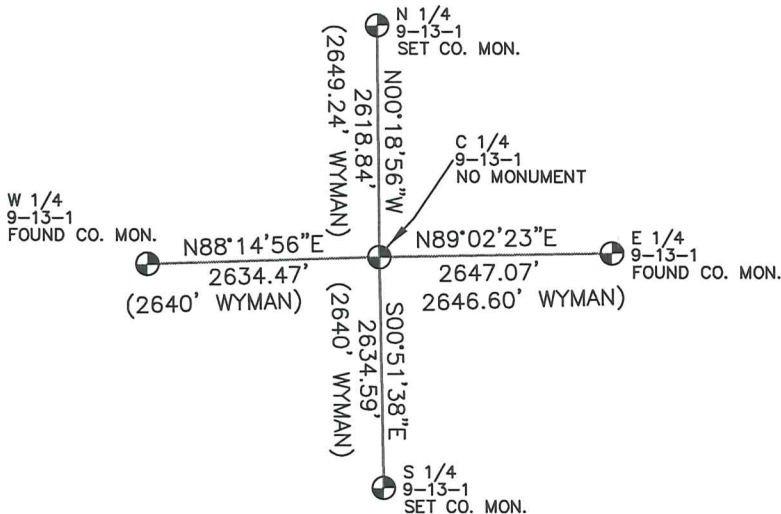
### PLAN VIEW OF REFERENCE TIES



**LEGEND**

- ⊙ CENTER OF SECTION 9, NO MONUMENT
- SET 3/4" X 18" IRON BAR 1.5 LB/FT UNLESS NOTED

### MAP SHOWING BEARINGS AND DISTANCES TO OTHER CORNERS



I, CHRISTIAN J. RUNNING, PROFESSIONAL LAND SURVEYOR, HEREBY CERTIFY THAT THE CORNER LOCATION SHOWN ON THIS RECORD WAS DETERMINED BY ME OR UNDER MY DIRECTION AND CONTROL, AND THAT THIS U.S. PUBLIC LAND SURVEY MONUMENT RECORD IS CORRECT AND COMPLETE TO THE BEST OF MY KNOWLEDGE AND BELIEF.

CHRISTIAN J. RUNNING  
PLS 2558