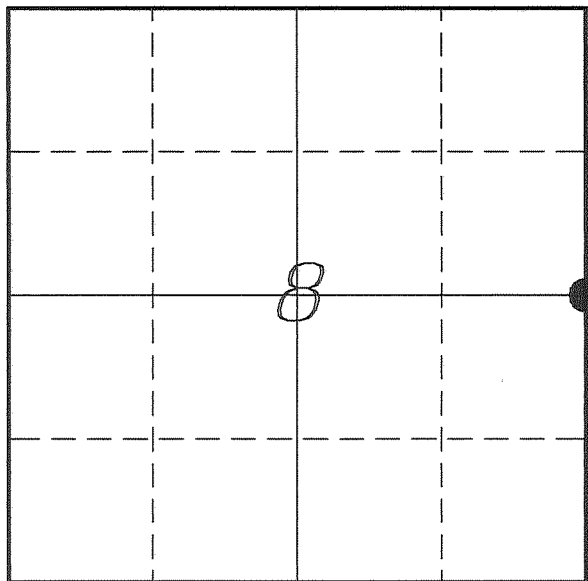


U. S. PUBLIC LAND SURVEY MONUMENT RECORD

**SECTION 8, T13N, R1W, TOWN OF UNION
VERNON COUNTY, WISCONSIN**



LOCATION OF LANDMARK

<i>VERNON COUNTY COORDINATE SYSTEM</i>	
<i>Northing</i>	<i>171689.325</i>
<i>Easting</i>	<i>801851.745</i>
<i>Datum</i>	<i>NAD 1983 (2011)</i>
<i>Elevation</i>	
<i>Datum</i>	
<i>TYPE OF LANDMARK:</i>	
<i>Set Lunde Monument</i>	
<i>4" Brass Capped</i>	
<i>Iron Pipe</i>	
<i>BEARINGS ARE REFERENCED TO:</i>	
<i>Vernon County Coordinates</i>	
<i>(Survey Grade)</i>	

Witnesses: Laurence E Johns III
Larry Handschy

Eagle Ridge Surveying
PO Box 213
Wilton, Wisconsin

Date: 3 June 2016

Describe any record evidence, monument evidence, testimonial evidence or any other material evidence you considered and whether the monument was found or restored through acceptance of an obliterated evidence location.

No bearing trees of record were located.

I retraced Lampman's survey to determine the location of this corner as shown on his map. He has no distance, just a bearing to this corner.

We found a 1 1/2" iron pipe on a North/South fence in the general location. This monument matches his survey but does not fit the calls. The difference in bearing is exactly 1 degree.

The only occupation in the area is a unmaintained North/South fence and short down fence to the East located at the pipe. The fence to the East does match the South edge of a field about 200 feet to the East. Though going further East, it does not match any other occupation. It is well South of occupation at the '40' Corner and potential center of section.

The pipe is also too far South of any distance to the North or South. These two corners have not been determined at this time. But very preliminary measurements and occupation at this corners would put this corner near the computed location well North of the found iron pipe.

Therefore I discounted the iron pipe as potentially set in error or a monument from a unrecorded survey for the field to the East.

I placed this corner at the bearing shown on Lampman's survey and in line with the North/South fence. this location fits much better with the majority of occupation in the area.

Describe or show any material discrepancy between the location of the restored corner and that of the corner previously restored or re-established.

Alfred L Brown established this corner in January 1846.

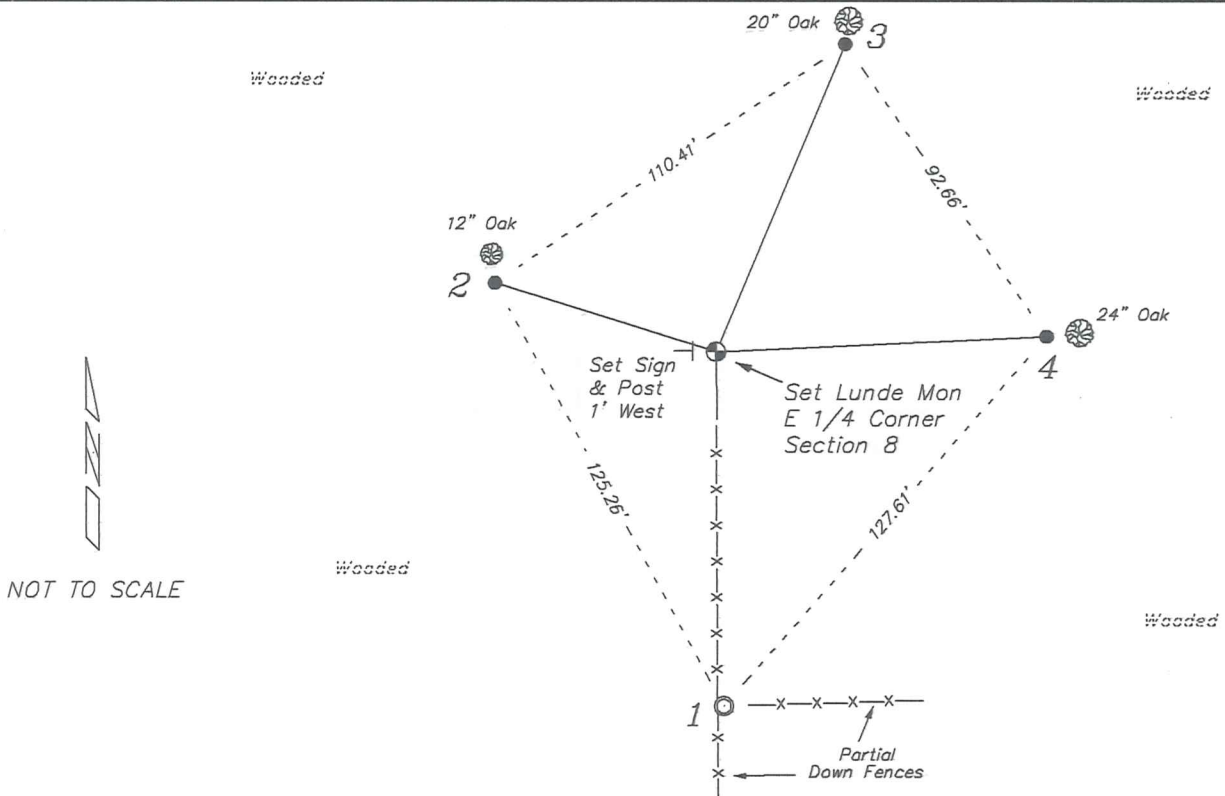
Egbert Wyman was at this corner, in October 1877, during a survey in Section 9. He shows no new bearing trees for this corner.

C M Sterling was at this corner, in April 1891, during a survey in Section 8. He does not mention if he found the government corner or re-established the corner. He shows no new bearing trees.

Robert Lampman was at this corner, in August 1977, during a survey in Section 8. He shows that he set a 1" iron pipe at this corner, but not show a distance to it from his parcel.

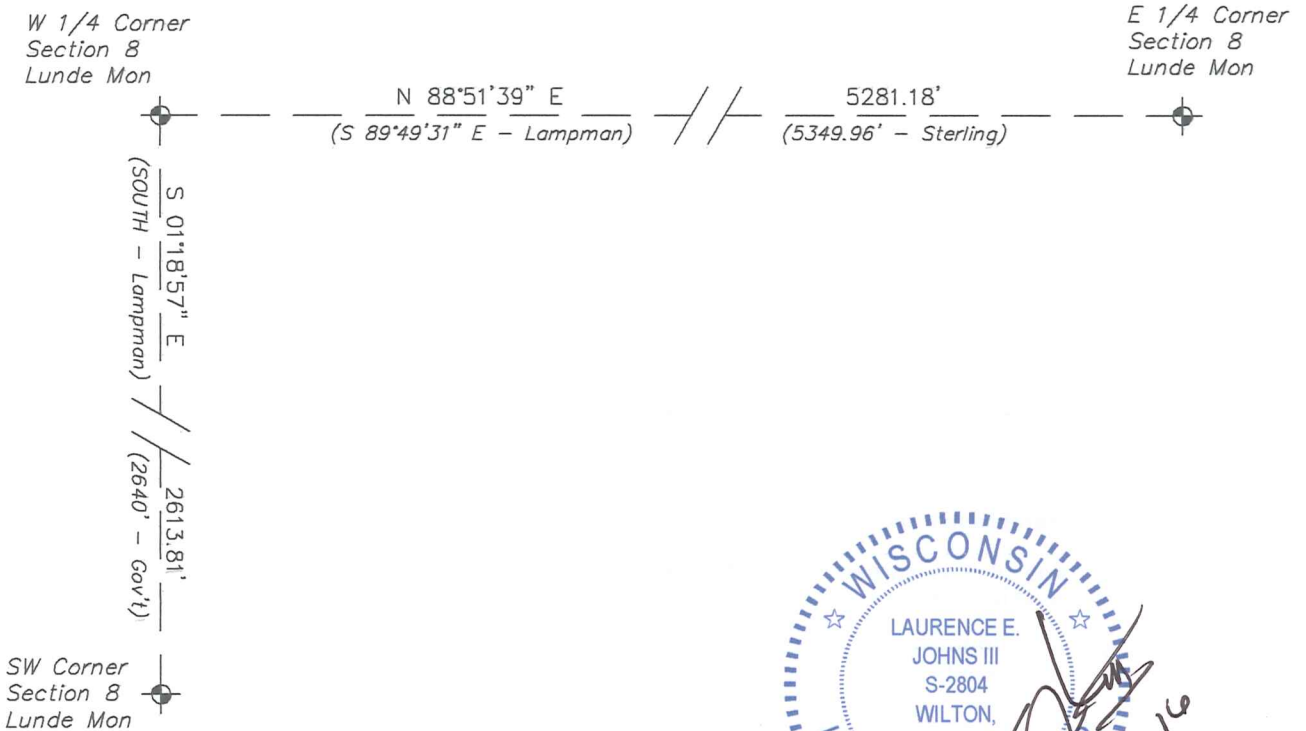
RECORD OF DURABLE WITNESS MONUMENTS

NO	DESCRIPTION	BEARING	DISTANCE
1	Existing 1 1/2" Iron Pipe In Fence Line	S 01°20'14" E	92.19'
2	Set 3/4" x 18" Iron Rod 1' South of a 12" Oak	N 72°33'19" W	60.16'
3	Set 3/4" x 18" Iron Rod 2' South of a 20" Oak	N 22°40'38" E	87.25'
4	Set 3/4" x 18" Iron Rod 2' West of a 24" Oak	N 87°18'04" E	86.08'



PLAN VIEW DRAWING OF REFERENCE TIES

Map Showing Distance And Direction To Other Public Land Survey Corners Used For Re-Establishing The Corner



LAURENCE E. JOHNS III
 S-2804
 WILTON, WISCONSIN
 13 JUN 16

I, Laurence E Johns III PLS 2804, Professional Land Surveyor, hereby certify that the corner location shown on this record was determined by me or under my direction and control, and that this U.S. Public Land Survey Monument Record is correct and complete to the best of my knowledge and belief.