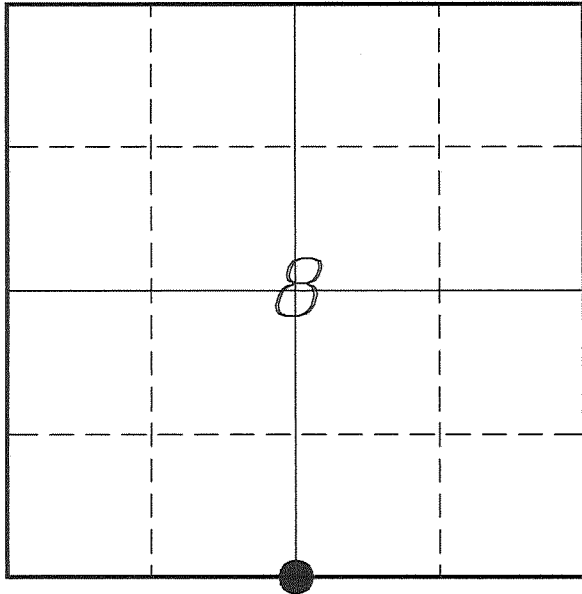


**U. S. PUBLIC LAND SURVEY MONUMENT RECORD**

**SECTION 8, T13N, R1W, TOWN OF UNION  
VERNON COUNTY, WISCONSIN**



**LOCATION OF LANDMARK**

<b>VERNON COUNTY COORDINATE SYSTEM</b>	
Northing	169034.436
Easting	799258.586
Datum	NAD 1983 (2011)
Elevation	
Datum	
<b>TYPE OF LANDMARK:</b>	
Set Lunde Monument 4" Brass Capped Iron Pipe	
<b>BEARINGS ARE REFERENCED TO:</b>	
Vernon County Coordinates (Survey Grade)	

Witnesses: Laurence E Johns III  
Larry Handschy

*Eagle Ridge Surveying*  
PO Box 213  
Wilton, Wisconsin

Date: 4 June 2016

*Describe any record evidence, monument evidence, testimonial evidence or any other material evidence you considered and whether the monument was found or restored through acceptance of an obliterated evidence location.*

No bearing trees of record were located.

The only occupation in this area is a well maintained East/West fence.

I determined this location by doubling the distance from the well maintained '40' Corner to the West and the previously re-established SW Corner of the section and using the East/West fence to the North/South positioning

This location fits reasonably well with the government notes as well with occupation along the North/South quarter line.

I accepted this location as the best available evidence of the original government corner and placed a Lunde Monument.

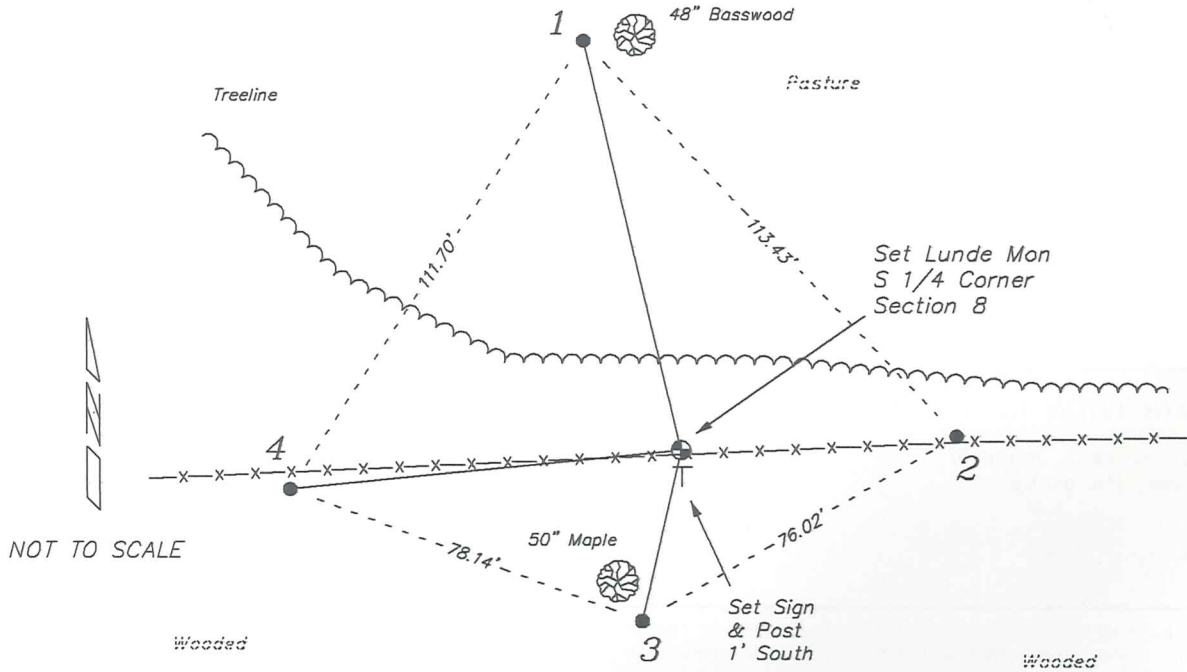
*Describe or show any material discrepancy between the location of the restored corner and that of the corner previously restored or re-established.*

Alfred L Brown established this corner in January 1846.

C M Sterling was at this corner, in April 1891, during a survey in Section 8. He does not mention if he found the government corner or re-established the corner. He shows no new bearing trees.

## RECORD OF DURABLE WITNESS MONUMENTS

NO	DESCRIPTION	BEARING	DISTANCE
1	Set 3/4" x 18" Iron Rod 2' West of a 48" Basswood	N 13°24'08" W	87.86'
2	Set 3/4" x 18" Iron Rod In Fence Line	N 87°04'57" E	57.51'
3	Set 3/4" x 18" Iron Rod 2' Southeast of a 50" Maple	S 12°54'00" W	36.45'
4	Set 3/4" x 18" Iron Rod In Fence Line	S 84°17'13" W	81.73'



## PLAN VIEW DRAWING OF REFERENCE TIES

Map Showing Distance And Direction To Other Public Land Survey Corners Used For Re-Establishing The Corner



I, Laurence E Johns III PLS 2804, Professional Land Surveyor, hereby certify that the corner location shown on this record was determined by me or under my direction and control, and that this U.S. Public Land Survey Monument Record is correct and complete to the best of my knowledge and belief.