

VERNON COUNTY

CERTIFIED U.S. PUBLIC LAND SURVEY MONUMENT RECORD

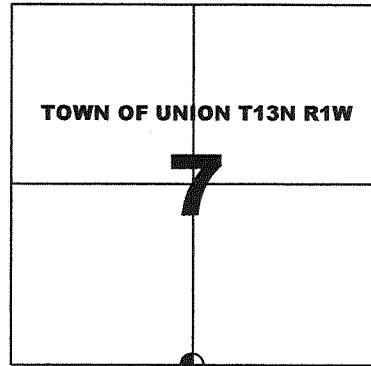
INSTRUCTIONS: THIS RECORD SHALL SHOW THE LOCATION OF THE CORNER AND SHALL INCLUDE ALL OF THE FOLLOWING ELEMENTS (A-1)

(A) IDENTIFY THE CORNER BY REFERENCE TO THE U.S. PUBLIC LAND SURVEY SYSTEM
SOUTH QUARTER CORNER SECTION 7, T13N, R1W

- ⊕ = CORNER MONUMENT RECOVERED -
LUNDE MONUMENT 2" Iron Pipe w/ Brass Cap
 WITNESSES TO CORNER LOCATION
 1) SEAN M. WALSH
 2) NOLAN WALSH

MEASUREMENTS BASED UPON TRADITIONAL TOTAL STATION MEASUREMENTS FROM GPS CONTROL

BASIS OF BEARINGS AND ORIENTAITON
 VERNON COUNTY COORDINATES, NAD 83(2011)



SOUTH QUARTER CORNER

SECTION 7, TOWN 13 NORTH, RANGE 1 WEST
TOWN OF UNION, VERNON COUNTY, WISCONSIN

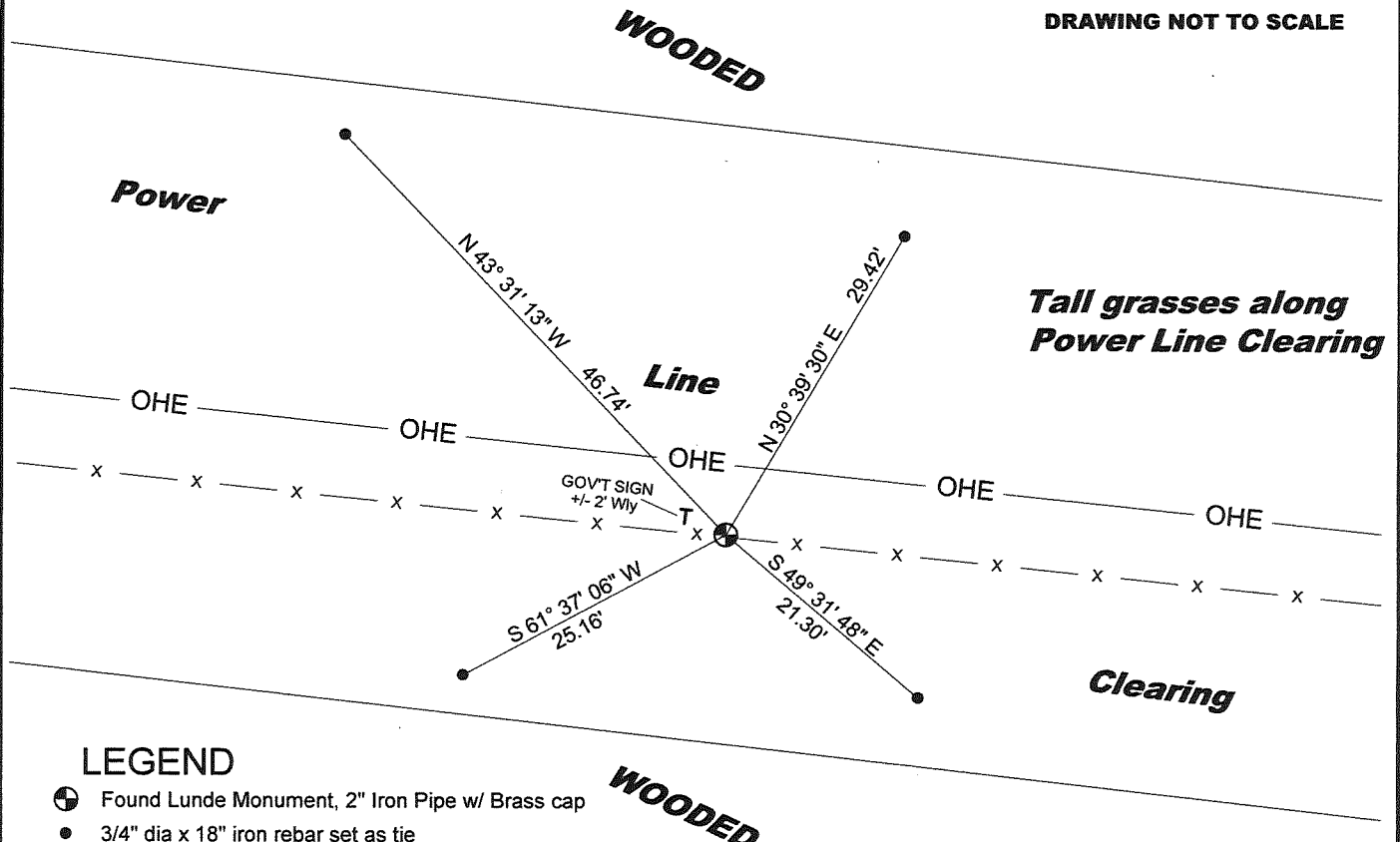
(B) A DESCRIPTION OF ANY RECORD EVIDENCE, MONUMENT EVIDENCE, OCCUPATIONAL EVIDENCE, TESTIMONIAL EVIDENCE OR ANY OTHER MATERIAL EVIDENCE CONSIDERED BY THE PROFESSIONAL LAND SURVEYOR AND WHETHER THE MONUMENT WAS FOUND OR PLACED.

ON AUGUST 28, 2018, IN CONJUNCTION WITH A PRIVATE SURVEY FOR ROBERT GABBEY LOCATED IN PART OF SECTION 7, I FOUND A LUNDE MONUMENT AT THIS LOCATION. ALL OF THE PREVIOUS TIES WERE DISTURBED OR MISSING. I ACCEPTED THIS LOCATION AS BEST AVAILABLE EVIDENCE. I SET THE NEW TIES AND DOCUMENTED THE EXISTING TO PERPETUATE AS SHOWN BELOW. THIS CORNER WAS PREVIOUSLY DOCUMENTED BY BLAKESLEE, 1986, AND CUMMER, 2004.

(C) IN THE PLAN VIEW DRAWING BELOW, PROVIDE REFERENCE TO AT LEAST 4 WITNESS MONUMENTS OR, IF THE LOCATION IS WITHIN A MUNICIPALITY, TO AT LEAST 2 WITNESS MONUMENTS. (WITNESS MONUMENTS SHALL BE MADE OF CONCRETE, NATURAL STONE, IRON OR OTHER EQUALLY DURABLE MATERIAL) DESCRIBE WITNESS MONUMENTS

(D) SHOW A PLAN VIEW DRAWING, DEPICTING THE RELEVANT MONUMENTS AND REFERENCE TIES, WHICH IS SUFFICIENTLY DETAILED TO ENABLE ACCURATE RELOCATION OF THE CORNER MONUMENT IF IT IS DISTURBED.

DRAWING NOT TO SCALE



LEGEND

- ⊕ Found Lunde Monument, 2" Iron Pipe w/ Brass cap
- 3/4" dia x 18" iron rebar set as tie

VERNON COUNTY
CERTIFIED U.S. PUBLIC LAND SURVEY MONUMENT RECORD

RECOVERY PROCEDURES:

(E) A DESCRIPTION OF ANY RECORD EVIDENCE, MONUMENT EVIDENCE, OCCUPATIONAL EVIDENCE, TESTIMONIAL EVIDENCE OR ANY OTHER MATERIAL EVIDENCE CONSIDERED BY THE SURVEYOR, AND WHETHER THE MONUMENT WAS FOUND OR PLACED;

ON AUGUST 28, 2018, IN CONJUNCTION WITH A PRIVATE SURVEY FOR ROBERT GABBAY LOCATED IN PART OF SECTION 7, I FOUND A LUNDE MONUMENT. PREVIOUS TIES WERE DISTURBED OR MISSING. I ACCEPTED THIS AS BEST AVAILABLE EVIDENCE AND SET NEW TIES TO PERPETUATE AS SHOWN BELOW.

(F) WHETHER THE CORNER WAS RESTORED THROUGH ACCEPTANCE OF AN OBLITERATED EVIDENCE LOCATION OR A FOUND PERPETUATED LOCATION; A FOUND PERPETUATED LOCATION

(G) WHETHER THE CORNER WAS REESTABLISHED THROUGH LOST-CORNER PROPORTIONATE METHODS; IF SO, SHOW THE DIRECTIONS AND DISTANCES TO OTHER PUBLIC LAND SURVEY CORNERS WHICH WERE USED AS EVIDENCE OR USED FOR PROPORTIONING IN DETERMINING THE CORNER LOCATION;

N/A

7.08 (3) (h)

N/A

SURVEYOR'S CERTIFICATE: CHAPTER 7.08 (3) (I)

THE UNDERSIGNED HEREBY CERTIFIES THAT THE U.S. PUBLIC LAND SURVEY MONUMENT RECORD SHOWN WAS DETERMINED BY THEM OR UNDER THEIR DIRECTION AND IS CORRECT AND COMPLETE TO THE BEST OF THEIR KNOWLEDGE AND BELIEF.



A handwritten signature in blue ink, appearing to read "Sean M. Walsh", written over a horizontal line.

9/10/18

DATE CERTIFIED

RECEIVED
 FEB 12 2004
 BY: *S. Jacobson*

Vernon County Certified U.S. Public Land Survey Monument Record

INSTRUCTIONS: THIS RECORD SHALL SHOW THE LOCATION OF THE CORNER AND SHALL INCLUDE ALL OF THE FOLLOWING ELEMENTS (A-I)

(A) IDENTIFY THE CORNER BY REFERENCE TO THE U.S. PUBLIC LAND SURVEY SYSTEM

■ = CORNER MONUMENT RESTORED

WITNESSES TO CORNER LOCATION:

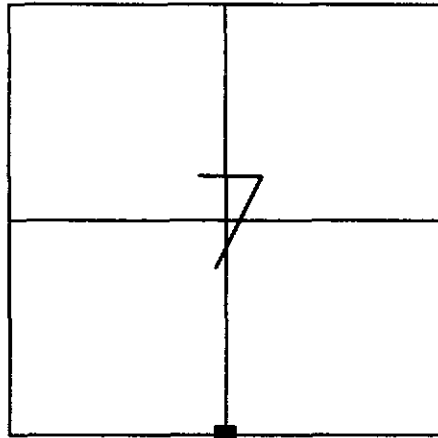
- 1) Curtis J. Cumber
- 2) Jeff C. Nedland
- 3) Jay D. Pederson

STATE PLANE COORDINATES (WISCONSIN SOUTH ZONE)

NORTHING:
 EASTING:

VERNON COUNTY COORDINATES

NORTHING: 168911.75
 EASTING: 794002.01



SECTION 7, TOWN 13 NORTH, RANGE 1 WEST
 Union Township

(B) DESCRIBE ANY RECORD EVIDENCE, MONUMENT EVIDENCE, OCCUPATIONAL EVIDENCE, TESTIMONIAL EVIDENCE OR ANY OTHER MATERIAL EVIDENCE YOU CONSIDERED, AND WHETHER THE MONUMENT WAS FOUND OR PLACED.

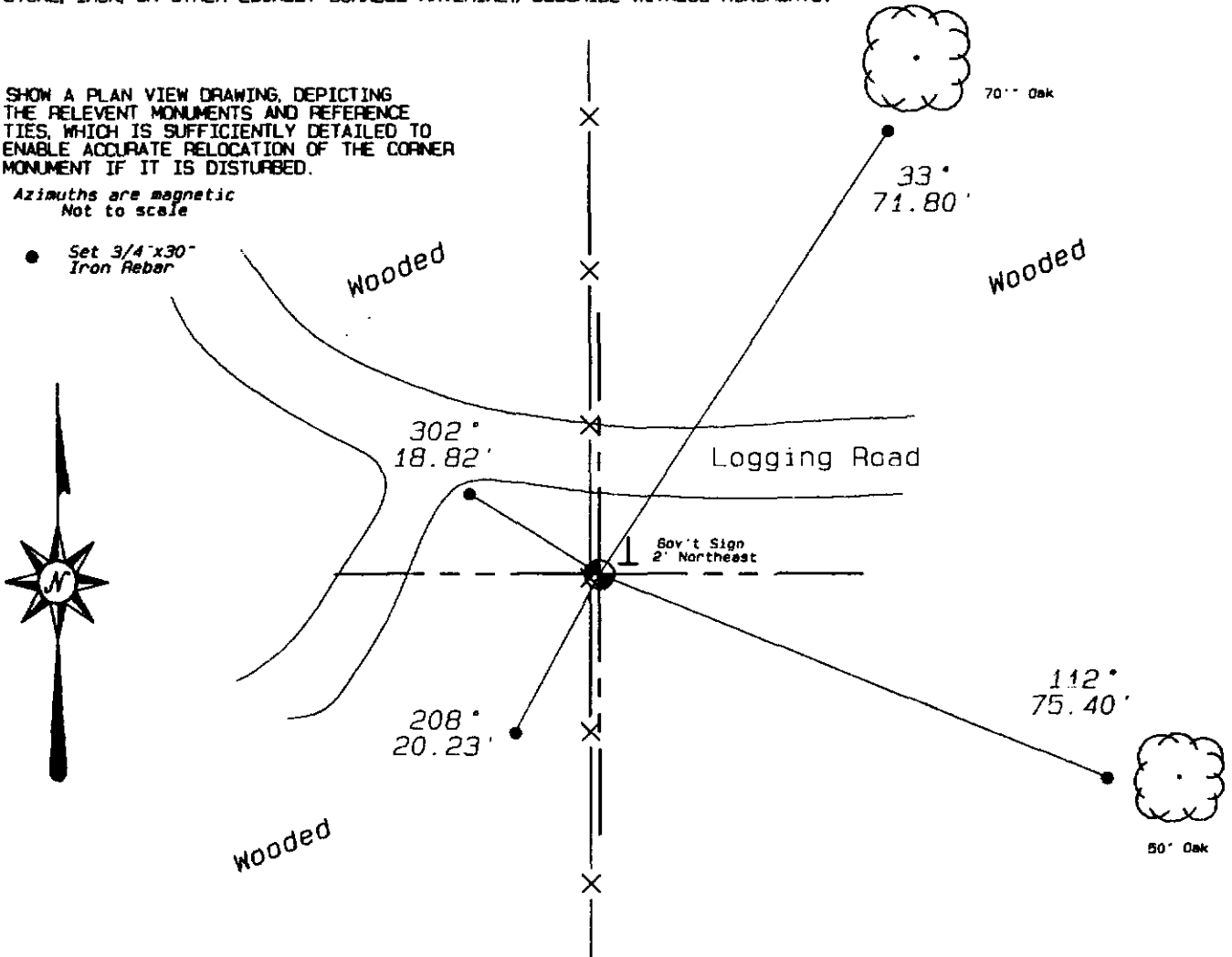
FOUND 2" IRON PIPE SET BY RICHARD BLAKESLEE IN 1986. REPLACED WITH A VERNON COUNTY MONUMENT.

(C) IN THE PLAN VIEW DRAWING BELOW, PROVIDE REFERENCE TIES TO AT LEAST 4 WITNESS MONUMENTS OR, IF THE LOCATION IS WITHIN A MUNICIPALITY, TO AT LEAST 2 WITNESS MONUMENTS. (WITNESS MONUMENTS SHALL BE MADE OF CONCRETE, NATURAL STONE, IRON, OR OTHER EQUALLY DURABLE MATERIAL.) DESCRIBE WITNESS MONUMENTS.

(D) SHOW A PLAN VIEW DRAWING, DEPICTING THE RELEVANT MONUMENTS AND REFERENCE TIES, WHICH IS SUFFICIENTLY DETAILED TO ENABLE ACCURATE RELOCATION OF THE CORNER MONUMENT IF IT IS DISTURBED.

*Azimuths are magnetic
 Not to scale*

● Set 3/4" x 30"
 Iron Rebar



(E) DESCRIBE ANY MATERIAL DISCREPANCY BETWEEN THE LOCATION OF THE CORNER AS RESTORED OR REESTABLISHED AND THE LOCATION OF THAT CORNER AS PREVIOUSLY RESTORED OR REESTABLISHED BY DISTANCE AND DIRECTION. SHOW THE DISCREPANCY ON THE PLAN VIEW DRAWING UNDER (D), ABOVE. SHOW THE DISTANCES BETWEEN THE CORNER AS PREVIOUSLY RESTORED OR REESTABLISHED AND (1) THE CORNER AS RESTORED OR REESTABLISHED, AND (2) TO AT LEAST 2 OF THE WITNESS MONUMENTS AS SHOWN ON THE DRAWING IN (D), ABOVE.

(NA)

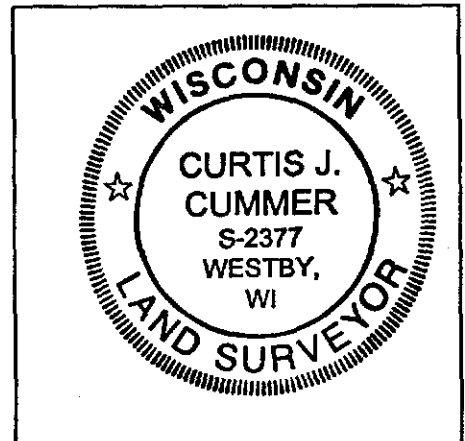
(F) WAS THE CORNER RESTORED THROUGH ACCEPTANCE OF (1) AN OBLITERATED EVIDENCE LOCATION, OR (2) A FOUND PERPETUATED LOCATION?

(2)


(G & H) WAS THE CORNER REESTABLISHED THROUGH LOST CORNER PROPORTIONATE METHODS? IF SO SHOW THE METHOD, INCLUDING THE DIRECTION AND DISTANCES TO THE OTHER PUBLIC LAND SURVEY CORNERS USED AS EVIDENCE OR USED FOR PROPORTIONING IN DETERMINING THE CORNER LOCATION.

(NA)

LAND SURVEYOR SEAL



(I) I, Curtis J. Cummer, CERTIFY THAT THE LOCATION SHOWN ON THIS RECORD WAS DETERMINED BY ME OR UNDER MY DIRECTION AND CONTROL AND THAT THIS U.S. PUBLIC LAND SURVEY MONUMENT RECORD IS CORRECT AND COMPLETE TO THE BEST OF MY KNOWLEDGE AND BELIEF.

 2/11/04
SIGNATURE DATE

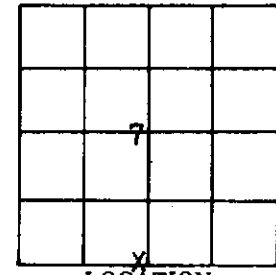
VERNON COUNTY

Government Land Corner Certificate

TYPE OF MONUMENT: 2" x 30" iron pipe set ELEVATION - M.S.L. DATUM: _____
 STATE PLANE COORDINATES: N _____ THETA ANGLE: _____
 Wis. South Zone E _____ FIELD BOOK: _____ PAGE _____

Basis for Monument Location

(Use reverse side if necessary.
 Show info such as: History of corner, with reference to Vol. and page,
 dates, surveyor; exact description of monument found; if location
 computed, by taped or EDM traverse; landowner remarks, witnesses,
 etc.)



Researched County Survey Records and found very little which could aid in establishing this corners location. On page 377, work done in 1891 the 1/8 corner to the East had been set. We looked for the 1/8 corners B.T.s but the occupation at this location has been destroyed. We found an old fence corner at the corners accepted position and monumented that as being the best evidence of the corners original position.

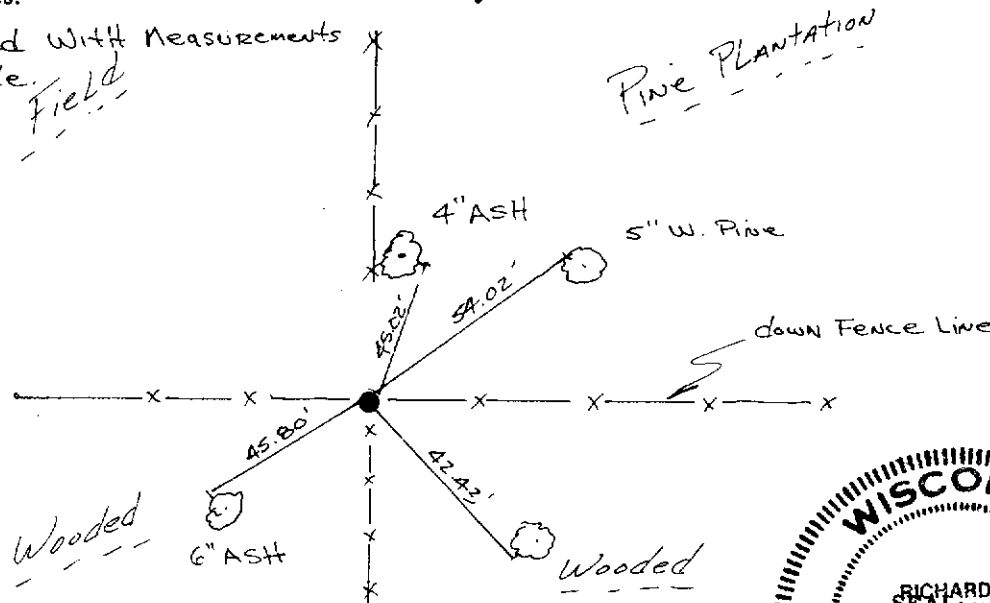
LOCATION (Indicated by 'X')
 CITY, VILLAGE or TOWN Union
 SECTION 7
 TOWN 13N
 RANGE 1W

DRAFTED BY R. Blakeslee
 FIELD CREW Blakeslee and Nachtigal

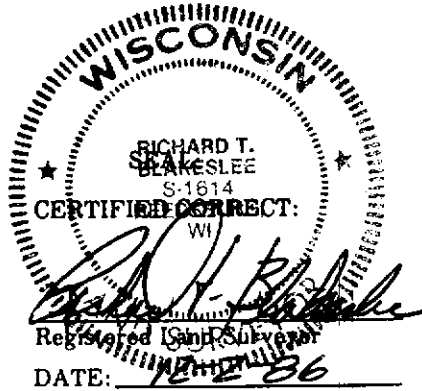
TIE SKETCH

(Show at least four ties. Also, fence lines, & of roads, and any other helpful factors and features.)

Note: ALL TREES BLAZED WITH MEASUREMENTS MADE TO 10" SPIKE.



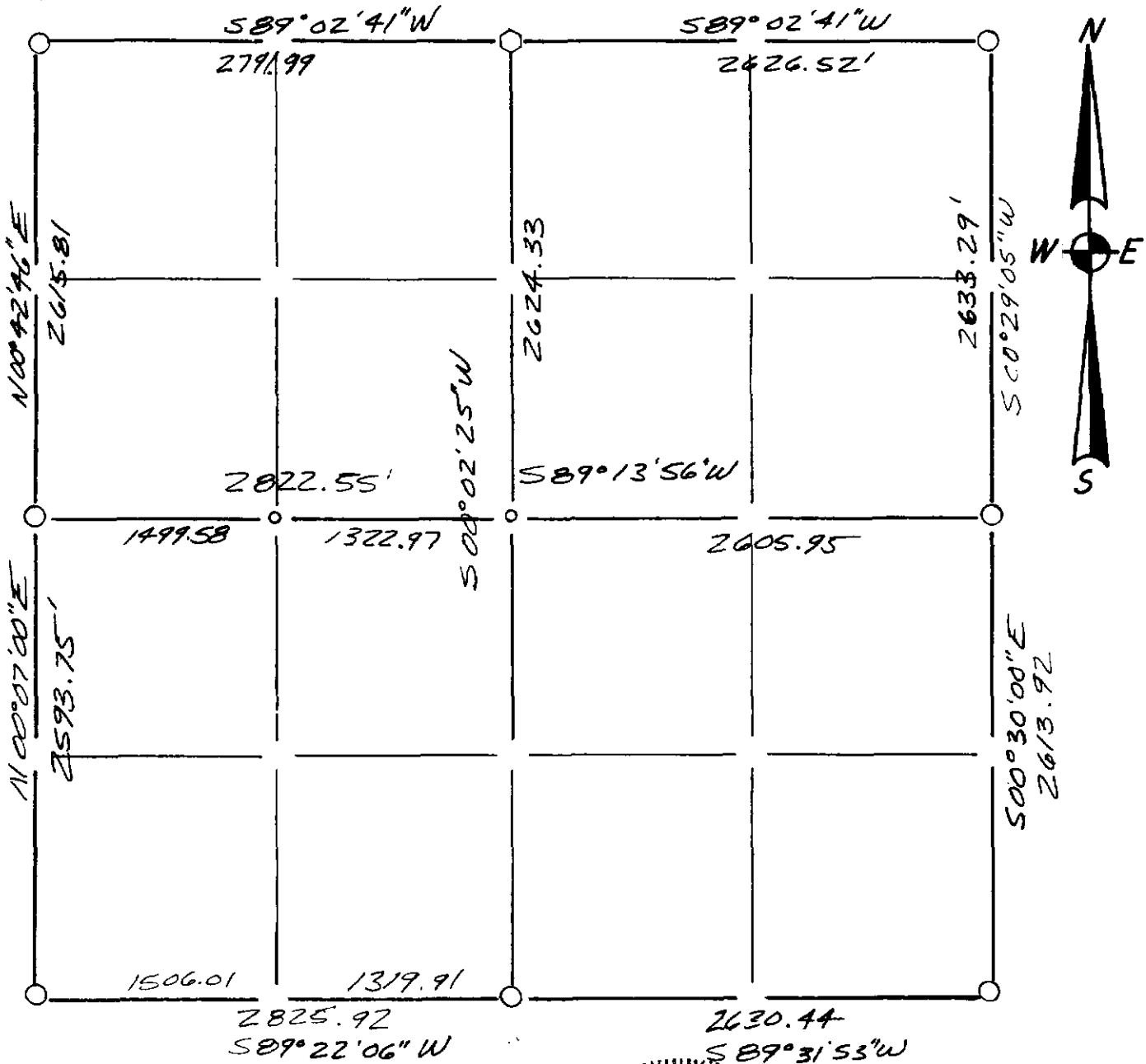
CORNER MAINTENANCE INFO		SEAL:



(9)

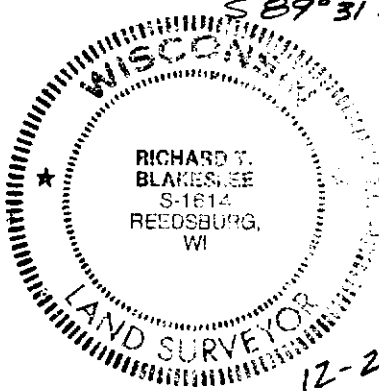
Section Summary and Index

Section 7 - 13N - 1W
Town Range



LEGEND

- ⊕ - Harrison cast iron monument.
- - Stone or concrete monument.
- - Other 2" x 30" IRON Pipe Set
- ◊ - 1 1/2" x 30" IRON Pipe Set
- - 3/4" x 24" Re-BAR Set



12-2-86
Richard T. Blakeslee

Note:

SURVEY SUMMARY ON BACK!
Summary for Pgs. 2-9

