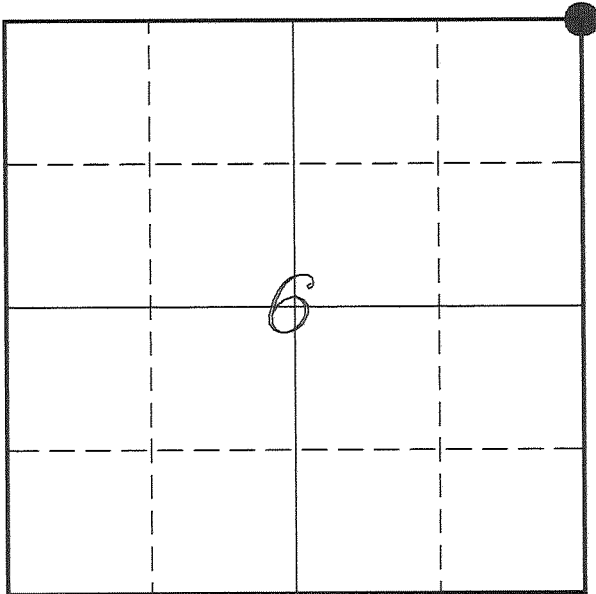


U. S. PUBLIC LAND SURVEY MONUMENT RECORD

**SECTION 6, T13N, R1W, TOWN OF UNION
VERNON COUNTY, WISCONSIN**



<i>VERNON COUNTY COORDINATE SYSTEM</i>	
<i>Northing</i>	<i>179332.204</i>
<i>Easting</i>	<i>796516.109</i>
<i>Datum</i>	<i>NAD 1983 (2011)</i>
<i>Elevation</i>	
<i>Datum</i>	
<i>TYPE OF LANDMARK:</i>	
<i>Set Lunde Monument</i>	
<i>4" Brass Capped</i>	
<i>Iron Pipe</i>	
<i>BEARINGS ARE REFERENCED TO:</i>	
<i>Vernon County Coordinates</i>	
<i>(Survey Grade)</i>	

LOCATION OF LANDMARK

Witnesses: Laurence E Johns III
Larry Handschy

Eagle Ridge Surveying
PO Box 213
Wilton, Wisconsin

Date: 21 April 2016

Describe any record evidence, monument evidence, testimonial evidence or any other material evidence you considered and whether the monument was found or restored through acceptance of an obliterated evidence location.

No bearing trees of record were located.

I found the 3/4" iron rod shown on Jasperson's tie sheet and used by Carroll.

After measuring along the entire town line and along with measuring to the E 1/4 & NE Corners of Section 31. I determined that the iron rod represents the SE Corner of Section 31 and not the NE Corner of Section 6.

Knower's survey in Section 5 definitely shows that there were two separate corners located here. Therefor I believe that the NE Corner of Section 6 should be offset from the SE Corner of Section 31 and not the same corner as mistakenly shown in the past.

I re-established this corner at the offset distance shown on the government survey and also shown by Knower.

I accepted this location as the best available evidence of the original government corner and set a Lunde Monument. .

Describe or show any material discrepancy between the location of the restored corner and that of the corner previously restored or re-established.

Alfred L Brown established this corner in December 1845.

Wm Knower was at this corner, in October 1882, during a survey in Section 6. He shows finding the government corner.

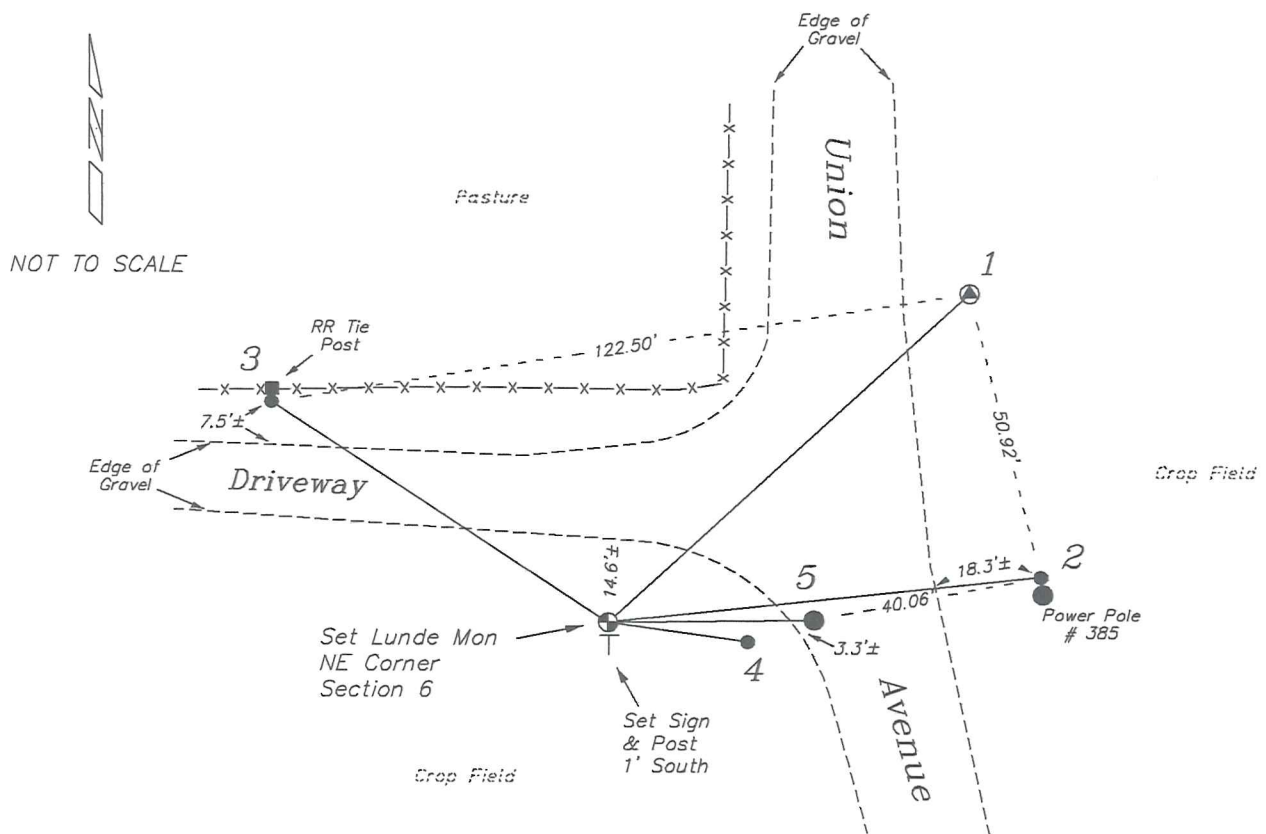
Wm Knower was at this corner again, in May 1888, during a survey in Section 5. He again shows finding the government corner and also shows this corner as being offset from the SW Corner of Section 32.

Ronald Jasperson shows this monument on a tie sheet as being the NW Corner of Section 5, in June 2002.

Patrick Carroll was at this corner, in February 2010, during a survey in Section 32 & Section 5. He shows that he found a 3/4" iron rod. He shows this corner being both the SW Corner of 32 and the NW Corner of Section 5.

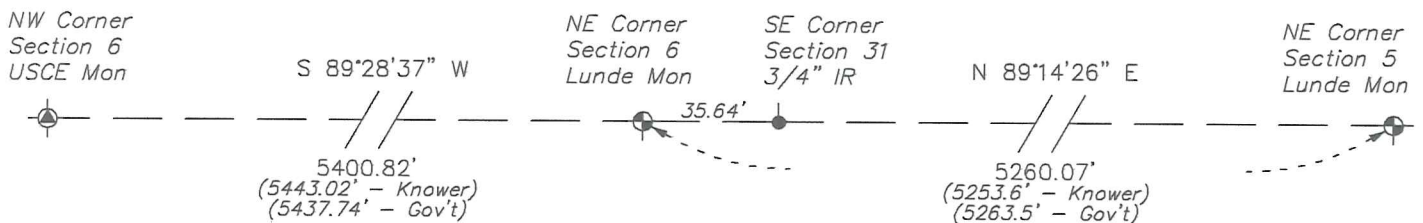
RECORD OF DURABLE WITNESS MONUMENTS

NO	DESCRIPTION	BEARING	DISTANCE
1	GPS Harn Station – Forest S	N 47°27'07" E	84.94'
2	Set 3/4" x 18" Iron Rod 1' North of Power Pole #385	N 83°52'09" E	75.40'
3	Set 3/4" x 18" Iron Rod South Side of RR Tie Fence Post	N 56°42'58" W	69.90'
4	Set 3/4" x 18" Iron Rod At Warning Sign	S 82°01'33" E	24.43'
5	Lunde Monument NE Corner – Section 6	N 89°17'15" E	35.64'



PLAN VIEW DRAWING OF REFERENCE TIES

Map Showing Distance And Direction To Other Public Land Survey Corners Used For Re-Establishing The Corner



* USCE Mon = US Army Corps of Engineer Monument

I, Laurence E Johns III PLS 2804, Professional Land Surveyor, hereby certify that the corner location shown on this record was determined by me or under my direction and control, and that this U.S. Public Land Survey Monument Record is correct and complete to the best of my knowledge and belief.

