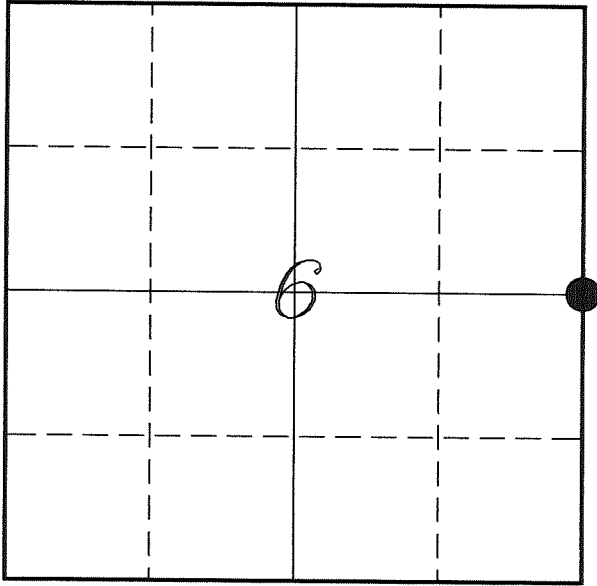


*U. S. PUBLIC LAND SURVEY MONUMENT RECORD*

*SECTION 01, T13N, R1W, TOWN OF UNION  
VERNON COUNTY, WISCONSIN*



*LOCATION OF LANDMARK*

<i>VERNON COUNTY COORDINATE SYSTEM</i>	
<i>Northing</i>	<i>176856.946</i>
<i>Easting</i>	<i>796535.534</i>
<i>Datum</i>	<i>NAD 1983 (2011)</i>
<i>Elevation</i>	
<i>Datum</i>	
<i>TYPE OF LANDMARK:</i>	
<i>Set Lunde Monument 4" Brass Capped Iron Pipe</i>	
<i>BEARINGS ARE REFERENCED TO:</i>	
<i>Vernon County Coordinates (Survey Grade)</i>	

*Witnesses: Laurence E Johns III  
Al Hoff*

*Eagle Ridge Surveying  
PO Box 213  
Wilton, Wisconsin*

*Date: 24 May 2018*

*Describe any record evidence, monument evidence, testimonial evidence or any other material evidence you considered and whether the monument was found or restored through acceptance of an obliterated evidence location.*

No bearing trees of record were located.

I found no evidence to the North or South for the entire half-mile that would support any East/West positioning. I found one fence corner to the East that represents the '40' corner.

I found that when I checked location using the prorational location for this corner. Being a straight line between section corners and prorated North/South based on government notes. I found that the North/South position was supported by an straight East/West fence. Also the straight line was supported by the fence corner at the '40' to the East.

In my opinion, the occupational evidence is supported by the prorational location. I feel that this corner is not lost.

The corner is located 1 foot South of the fence.

I accepted the location as the best available evidence of the original government corner and placed a Lunde Monument.

*Describe or show any material discrepancy between the location of the restored corner and that of the corner previously restored or re-established.*

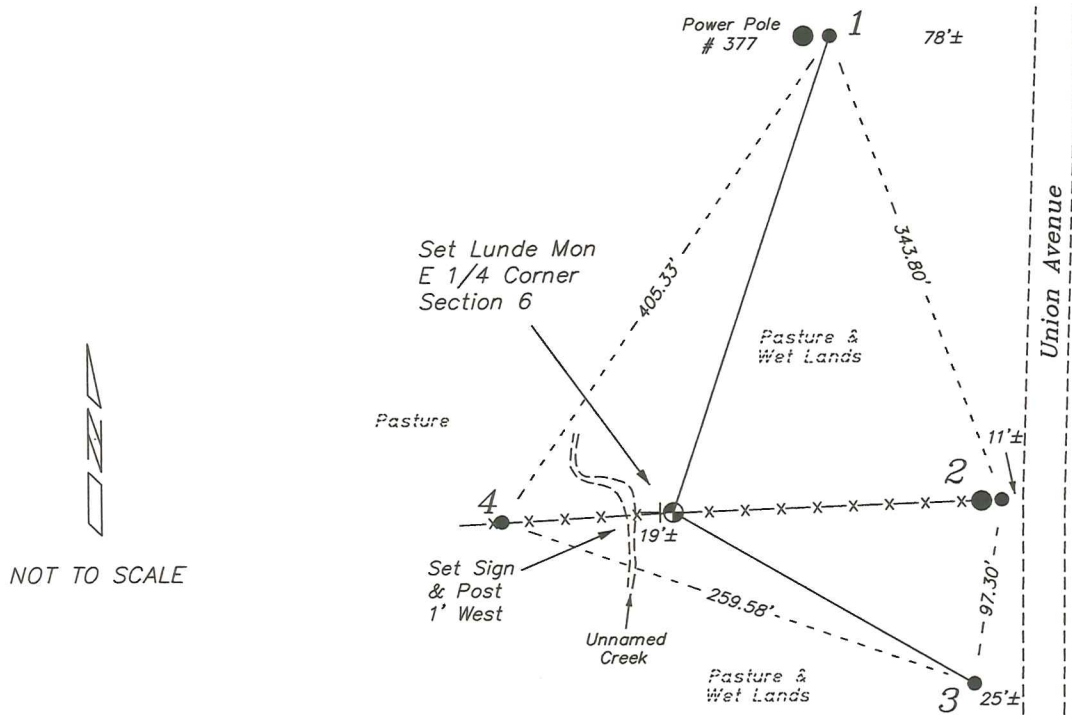
Alfred L Brown established this corner in January 1846.

Wm Knower was at this corner, in October 1882, during a survey in Section 6. He shows that he found the government corner.

Wm Knower was at this corner again, in May 1888, during a survey in Section 5. He again shows he found the government corner.

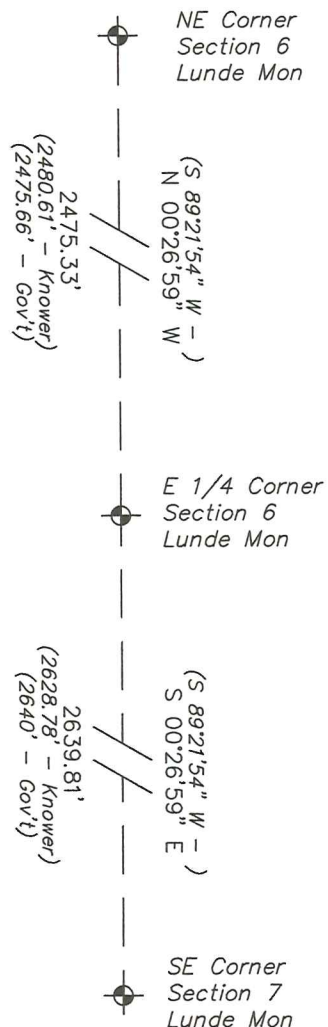
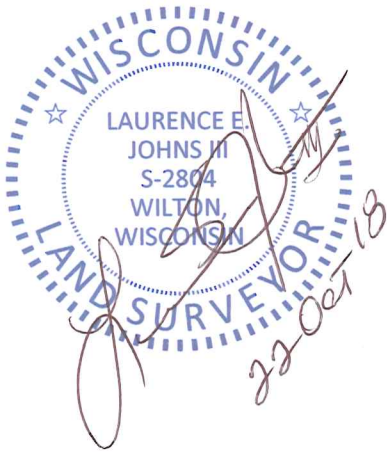
# RECORD OF DURABLE WITNESS MONUMENTS

NO	DESCRIPTION	BEARING	DISTANCE
1	Set 3/4" x 18" Iron Rod East Side of Power Pole 377	N 18°31'54" E	363.96'
2	Set 3/4" x 18" Iron Rod 1' East of Wood Fence Corner Post	N 88°04'41" E	170.81'
3	Set 3/4" x 18" Iron Rod West Side of West 4x4 Post Of Pair	S 59°52'36" E	180.18'
4	Set 3/4" x 18" Iron Rod North Side of Wood Fence Post	S 87°00'04" W	89.28'



## PLAN VIEW DRAWING OF REFERENCE TIES

Map Showing Distance And Direction To Other Public Land Survey Corners Used For Re-Establishing The Corner



I, Laurence E Johns III PLS 2804, Professional Land Surveyor, hereby certify that the corner location shown on this record was determined by me or under my direction and control, and that this U.S. Public Land Survey Monument Record is correct and complete to the best of my knowledge and belief.