

VERNON COUNTY
CERTIFIED U.S. PUBLIC LAND SURVEY MONUMENT RECORD

RECOVERY PROCEDURES:

(E) A DESCRIPTION OF ANY RECORD EVIDENCE, MONUMENT EVIDENCE, OCCUPATIONAL EVIDENCE, TESTIMONIAL EVIDENCE OR ANY OTHER MATERIAL EVIDENCE CONSIDERED BY THE SURVEYOR, AND WHETHER THE MONUMENT WAS FOUND OR PLACED;

SEE PREVIOUS PAGE

(F) WHETHER THE CORNER WAS RESTORED THROUGH ACCEPTANCE OF AN OBLITERATED EVIDENCE LOCATION OR A FOUND PERPETUATED LOCATION; A FOUND PERPETUATED LOCATION

(G) WHETHER THE CORNER WAS REESTABLISHED THROUGH LOST-CORNER PROPORTIONATE METHODS; IF SO, SHOW THE DIRECTIONS AND DISTANCES TO OTHER PUBLIC LAND SURVEY CORNERS WHICH WERE USED AS EVIDENCE OR USED FOR PROPORTIONING IN DETERMINING THE CORNER LOCATION;

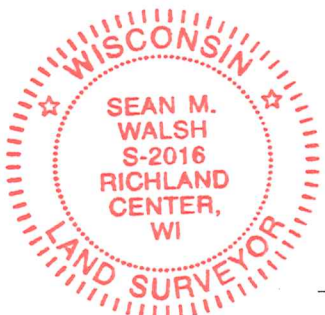
N/A

7.08 (3) (h)

N/A

SURVEYOR'S CERTIFICATE: CHAPTER 7.08 (3) (I)

THE UNDERSIGNED HEREBY CERTIFIES THAT THE U.S. PUBLIC LAND SURVEY MONUMENT RECORD SHOWN WAS DETERMINED BY THEM OR UNDER THEIR DIRECTION AND IS CORRECT AND COMPLETE TO THE BEST OF THEIR KNOWLEDGE AND BELIEF.



Sean M. Walsh 10/11/21

DATE CERTIFIED

RECEIVED
 FEB 12 2004
 BY: S. Jacobson

Vernon County Certified U.S. Public Land Survey Monument Record

INSTRUCTIONS: THIS RECORD SHALL SHOW THE LOCATION OF THE CORNER AND SHALL INCLUDE ALL OF THE FOLLOWING ELEMENTS (A-I)

(A) IDENTIFY THE CORNER BY REFERENCE TO THE U.S. PUBLIC LAND SURVEY SYSTEM

■ = CORNER MONUMENT RESTORED

WITNESSES TO CORNER LOCATION:

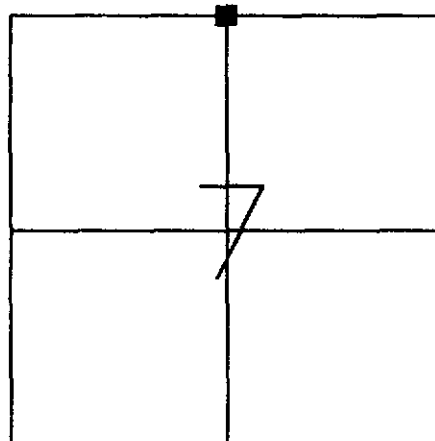
- 1) Curtis J. Cummer
- 2) Jeff C. Nedland
- 3) Jay D. Pederson

STATE PLANE COORDINATES (WISCONSIN SOUTH ZONE)

NORTHING:
 EASTING:

VERNON COUNTY COORDINATES

NORTHING: 174135.83
 EASTING: 793931.04



SECTION 7, TOWN 13 NORTH, RANGE 1 WEST
 Union Township

(B) DESCRIBE ANY RECORD EVIDENCE, MONUMENT EVIDENCE, OCCUPATIONAL EVIDENCE, TESTIMONIAL EVIDENCE OR ANY OTHER MATERIAL EVIDENCE YOU CONSIDERED, AND WHETHER THE MONUMENT WAS FOUND OR PLACED.

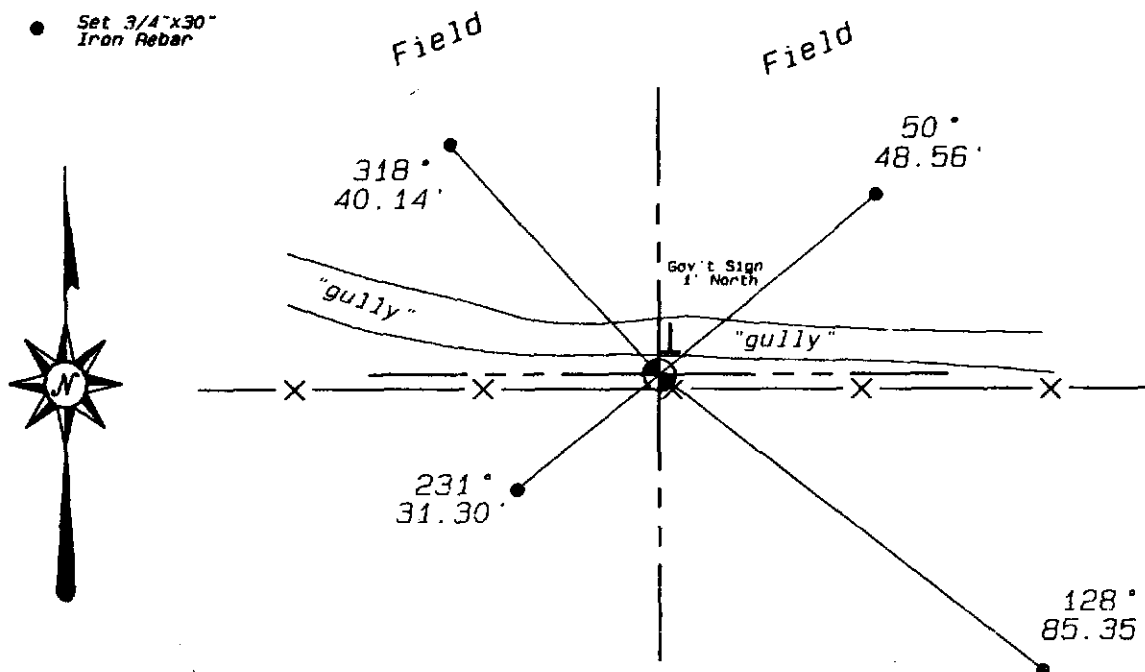
FOUND 2" IRON PIPE SET BY RICHARD BLAKESLEE IN 1986. REPLACED WITH A VERNON COUNTY MONUMENT.

(C) IN THE PLAN VIEW DRAWING BELOW, PROVIDE REFERENCE TIES TO AT LEAST 4 WITNESS MONUMENTS OR, IF THE LOCATION IS WITHIN A MUNICIPALITY, TO AT LEAST 2 WITNESS MONUMENTS. (WITNESS MONUMENTS SHALL BE MADE OF CONCRETE, NATURAL STONE, IRON, OR OTHER EQUALLY DURABLE MATERIAL.) DESCRIBE WITNESS MONUMENTS.

(D) SHOW A PLAN VIEW DRAWING, DEPICTING THE RELEVANT MONUMENTS AND REFERENCE TIES, WHICH IS SUFFICIENTLY DETAILED TO ENABLE ACCURATE RELOCATION OF THE CORNER MONUMENT IF IT IS DISTURBED.

*Azimuths are magnetic
 Not to scale*

- Set 3/4"x30" Iron Rebar



(E) DESCRIBE ANY MATERIAL DISCREPANCY BETWEEN THE LOCATION OF THE CORNER AS RESTORED OR REESTABLISHED AND THE LOCATION OF THAT CORNER AS PREVIOUSLY RESTORED OR REESTABLISHED BY DISTANCE AND DIRECTION. SHOW THE DISCREPANCY ON THE PLAN VIEW DRAWING UNDER (D), ABOVE. SHOW THE DISTANCES BETWEEN THE CORNER AS PREVIOUSLY RESTORED OR REESTABLISHED AND (1) THE CORNER AS RESTORED OR REESTABLISHED, AND (2) TO AT LEAST 2 OF THE WITNESS MONUMENTS AS SHOWN ON THE DRAWING IN (D), ABOVE.

(NA)

(F) WAS THE CORNER RESTORED THROUGH ACCEPTANCE OF (1) AN OBLITERATED EVIDENCE LOCATION, OR (2) A FOUND PERPETUATED LOCATION?

(2)

(G & H) WAS THE CORNER REESTABLISHED THROUGH LOST CORNER PROPORTIONATE METHODS? IF SO SHOW THE METHOD, INCLUDING THE DIRECTION AND DISTANCES TO THE OTHER PUBLIC LAND SURVEY CORNERS USED AS EVIDENCE OR USED FOR PROPORTIONING IN DETERMINING THE CORNER LOCATION.

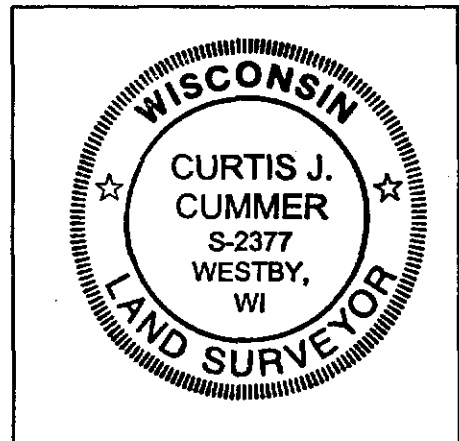
(NA)

(I) I, Curtis J. Cummer, CERTIFY THAT THE LOCATION SHOWN ON THIS RECORD WAS DETERMINED BY ME OR UNDER MY DIRECTION AND CONTROL AND THAT THIS U.S. PUBLIC LAND SURVEY MONUMENT RECORD IS CORRECT AND COMPLETE TO THE BEST OF MY KNOWLEDGE AND BELIEF.


SIGNATURE

2/17/04
DATE

LAND SURVEYOR SEAL



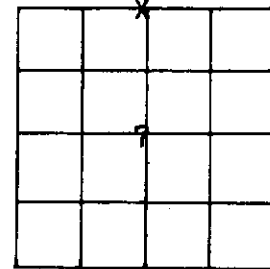
VERNON COUNTY

Government Land Corner Certificate

TYPE OF MONUMENT: 1 1/2" x 30" iron pipe set ELEVATION - M.S.L. DATUM: _____
 STATE PLANE COORDINATES: N _____ THETA ANGLE: _____
 Wis. South Zone E _____ FIELD BOOK: _____ PAGE _____

Basis for Monument Location

(Use reverse side if necessary.
 Show info such as: History of corner, with reference to Vol. and page, dates, surveyor; exact description of monument found; if location computed, by taped or EDM traverse; landowner remarks, witnesses, etc.)



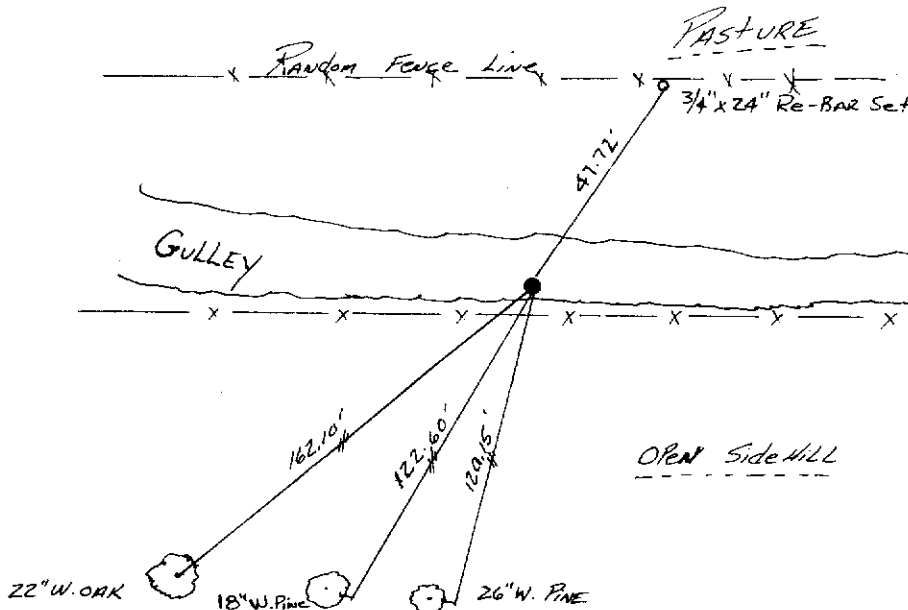
LOCATION
 (Indicated by 'X')

Researched County Survey records and found that the South line of Section 6 had been mon. at the 1/8 corners in 1882, (Page 191 of records. We could not find any bearing trees as recorded on this page at any of the occupied positions. The area around the N1/4 corner has been completely cut over and is now pasture. We chained from the creek as recorded in the Gov't notes 625' to the East and found that it fit the prorated distance across the north line of the Section well. We set the corner at the prorated position using the recorded Gov't distances. E.D.M. and 1" theodolite traverse.

CITY, VILLAGE or TOWN Union
 SECTION 7
 TOWN 13N
 RANGE 1W
 DRAFTED BY R. Blakeslee
 FIELD CREW Blakeslee and Nachtigal

TIE SKETCH

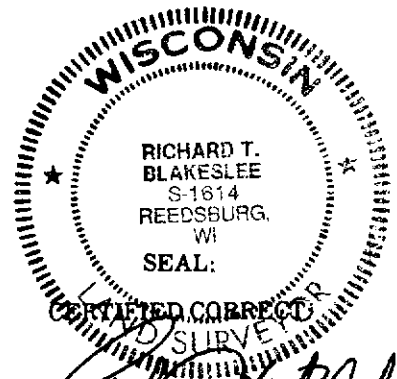
(Show at least four ties. Also, fence lines, & of roads, and any other helpful factors and features.)



Note: ALL TREES BLAZED WITH MEASUREMENTS MADE TO 10\" SPIKE.

CORNER MAINTENANCE INFO

SEAL:



Registered Land Surveyor

DATE: 12-2-86

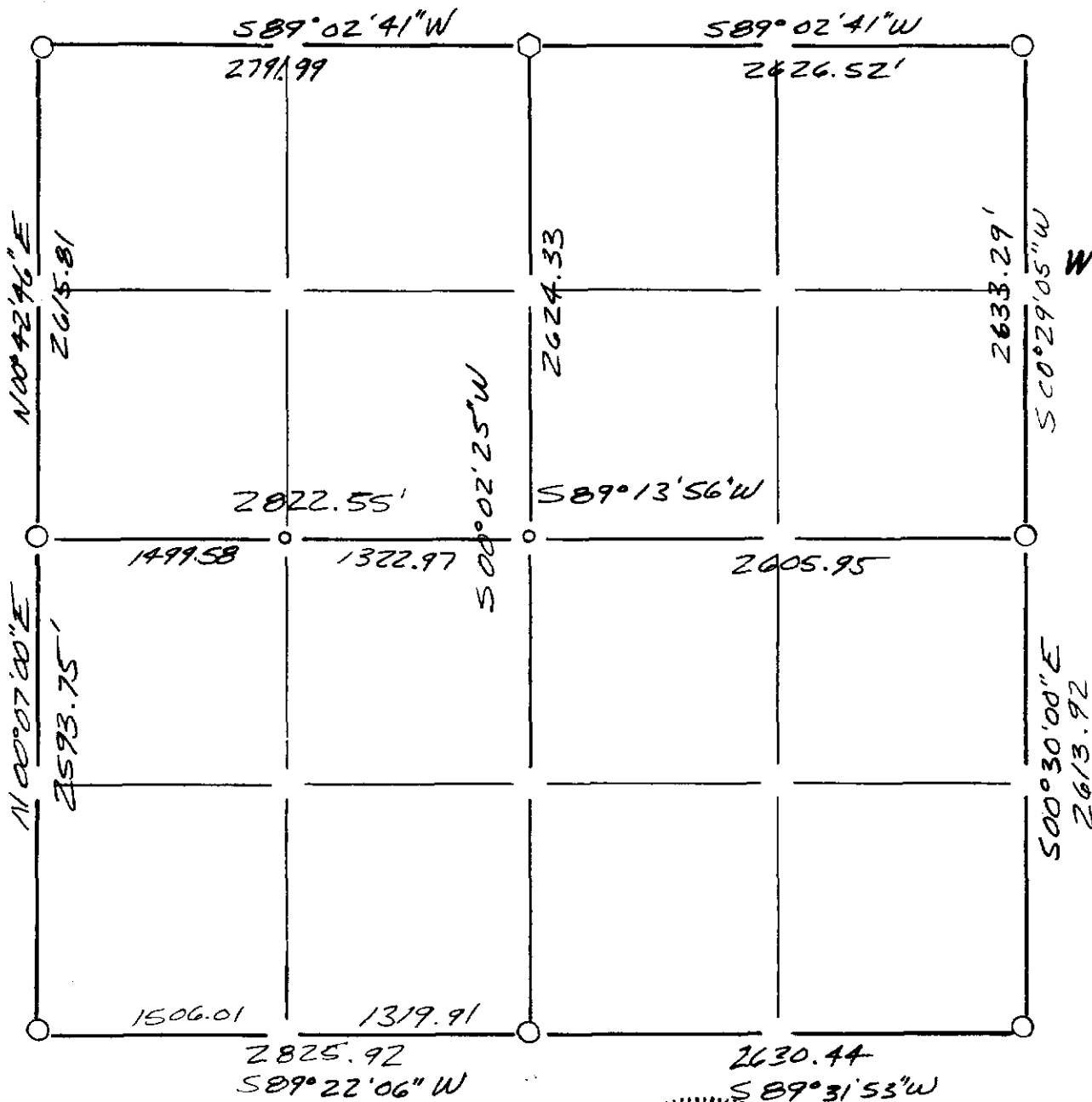
2

For Co. Surveyor Filing Use

CORNER NO. _____

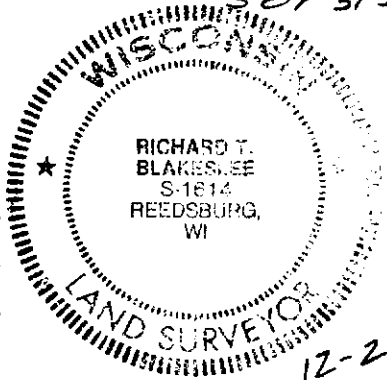
Section Summary and Index

Section 7 - Town 13N - Range 1W



LEGEND

- ⊕ - Harrison cast iron monument.
- - Stone or concrete monument.
- - Other 2" x 30" IRON Pipe Set
- ◊ = 1 1/2" x 30" IRON Pipe Set
- - 3/4" x 24" Re-BAR Set



12-2-86
Richard T. Blakeslee

Note:

SURVEY SUMMARY ON BACK!

Summary for Pgs. 2-9

INDEX

Sec. T. R.

ITEM	VOL.	PG.	FOLDER

WORK SUMMARY

Oct. 7 thru Nov 5
1986

In monumenting Section 7 we researched the original Gov't notes and Pages 377 and 470 for Section 7, page 191 for Section 6, page 324 for Section 5, page 90 for Section 18, page 381 for Section 8, page 89 for Section 17, and pages 246, 324 and 378 for T13N, R2W. We found old fence corner occupation at all the corners except the S1/4 corner. We spoke to all the land owners which lived in this area regarding the existing occupation and all of the corners we accepted where reported to us as being in the same location for as long as they could remember. We ran an extensive E.D.M. and 1" theodolite travers of the entire Section and tied into as many of the occupied fence corners which could be of help in determining the Gov't corners location. The center of Section 7 falls 2' South of the existing East-West fence. No fence line runs through the center in a north-South direction.

R.F. Blakeslee
R.L.S. 16A

Work done for Upland Farm Group.