

RECEIVED  
 FEB 12 2004  
 BY: S. Jacobson

## Vernon County Certified U.S. Public Land Survey Monument Record

INSTRUCTIONS: THIS RECORD SHALL SHOW THE LOCATION OF THE CORNER AND SHALL INCLUDE ALL OF THE FOLLOWING ELEMENTS (A-I)

(A) IDENTIFY THE CORNER BY REFERENCE TO THE U.S. PUBLIC LAND SURVEY SYSTEM

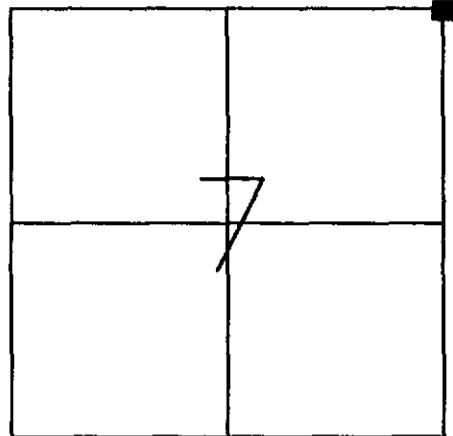
■ - CORNER MONUMENT RESTORED

WITNESSES TO CORNER LOCATION:

- 1) Curtis J. Cumber
- 2) Jeff C. Nedland
- 3) Jay D. Pederson

STATE PLANE COORDINATES (WISCONSIN SOUTH ZONE)  
 NORTHING:  
 EASTING:

VERNON COUNTY COORDINATES  
 NORTHING: 174217.22  
 EASTING: 796556.25



SECTION 7, TOWN 13 NORTH, RANGE 1 WEST  
 Union Township

(B) DESCRIBE ANY RECORD EVIDENCE, MONUMENT EVIDENCE, OCCUPATIONAL EVIDENCE, TESTIMONIAL EVIDENCE OR ANY OTHER MATERIAL EVIDENCE YOU CONSIDERED, AND WHETHER THE MONUMENT WAS FOUND OR PLACED.

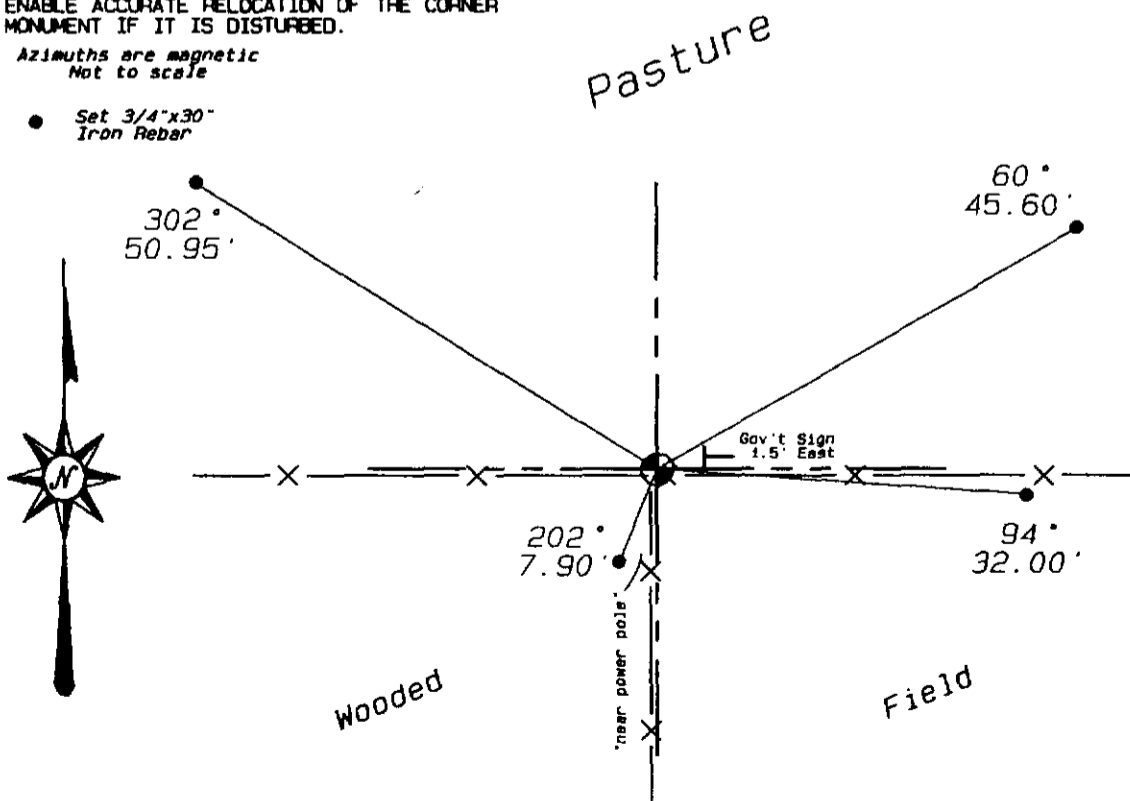
FOUND 2" IRON PIPE SET BY RICHARD BLAKESLEE IN 1986. REPLACED WITH A VERNON COUNTY MONUMENT.

(C) IN THE PLAN VIEW DRAWING BELOW, PROVIDE REFERENCE TIES TO AT LEAST 4 WITNESS MONUMENTS OR, IF THE LOCATION IS WITHIN A MUNICIPALITY, TO AT LEAST 2 WITNESS MONUMENTS. (WITNESS MONUMENTS SHALL BE MADE OF CONCRETE, NATURAL STONE, IRON, OR OTHER EQUALLY DURABLE MATERIAL.) DESCRIBE WITNESS MONUMENTS.

(D) SHOW A PLAN VIEW DRAWING, DEPICTING THE RELEVANT MONUMENTS AND REFERENCE TIES, WHICH IS SUFFICIENTLY DETAILED TO ENABLE ACCURATE RELOCATION OF THE CORNER MONUMENT IF IT IS DISTURBED.

*Azimuths are magnetic  
 Not to scale*

- Set 3/4"x30" Iron Rebar



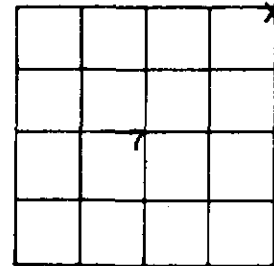
# VERNON COUNTY

## Government Land Corner Certificate

TYPE OF MONUMENT: 2" x 30" iron pipe set ELEVATION - M.S.L. DATUM: \_\_\_\_\_  
 STATE PLANE COORDINATES: N \_\_\_\_\_ THETA ANGLE: \_\_\_\_\_  
 Wis. South Zone E \_\_\_\_\_ FIELD BOOK: \_\_\_\_\_ PAGE \_\_\_\_\_

### Basis for Monument Location

(Use reverse side if necessary.  
 Show info such as: History of corner, with reference to Vol. and page,  
 dates, surveyor; exact description of monument found; if location  
 computed, by taped or EDM traverse; landowner remarks, witnesses,  
 etc.)



LOCATION  
 (Indicated by 'X')

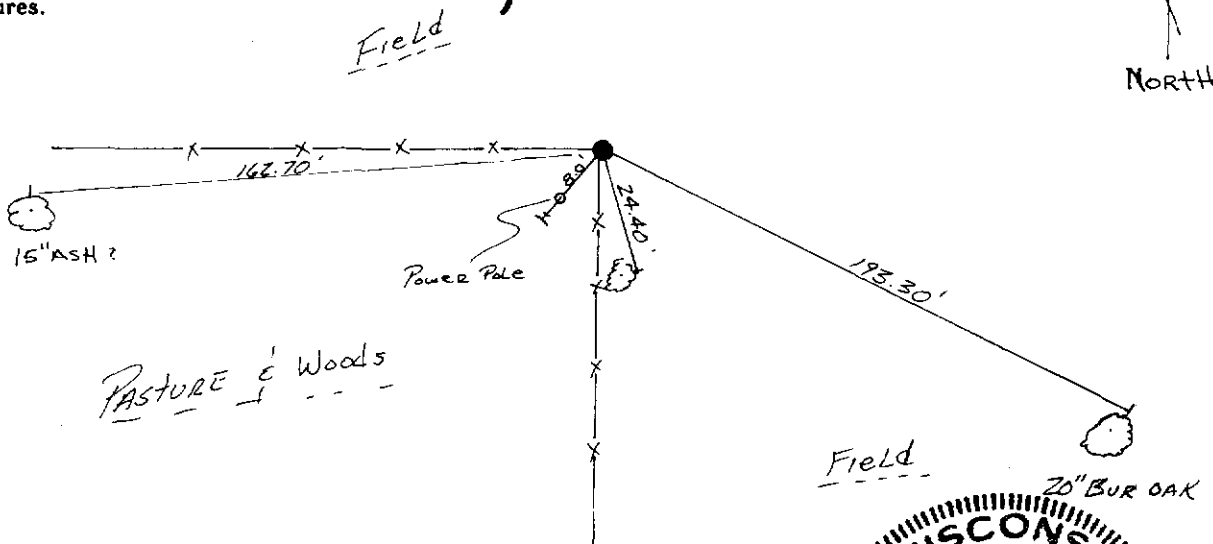
Researched County Survey records pages 377, 191 and 324. From the information supplied in these notes I could find little which could aid in establishing this corner. The fence corner at the occupied position has been maintained for many years in the same location as reported by local land owners. We could find no evidence of the original B.T.s or there stumps. I accepted the fence corner as the best evidence of this corners original position. This position fits well with other corners we established in this Section. We ran an E.D.M. and 1" theodolite traverse.

CITY, VILLAGE or TOWN Union  
 SECTION 7  
 TOWN 13N  
 RANGE 1W  
 SURVEYED BY R. Blakeslee  
 FIELD CREW Blakeslee and Nachtigal

### TIE SKETCH

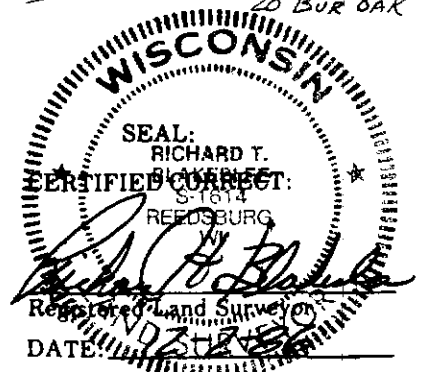
(Show at least four ties. Also, fence lines,  $\frac{1}{2}$  of roads, and any other helpful factors and features.)

NOTE: ALL TIES MADE TO 10" SPIKE  
 INSIDE OF TREE.



CORNER MAINTENANCE INFO

SEAL:

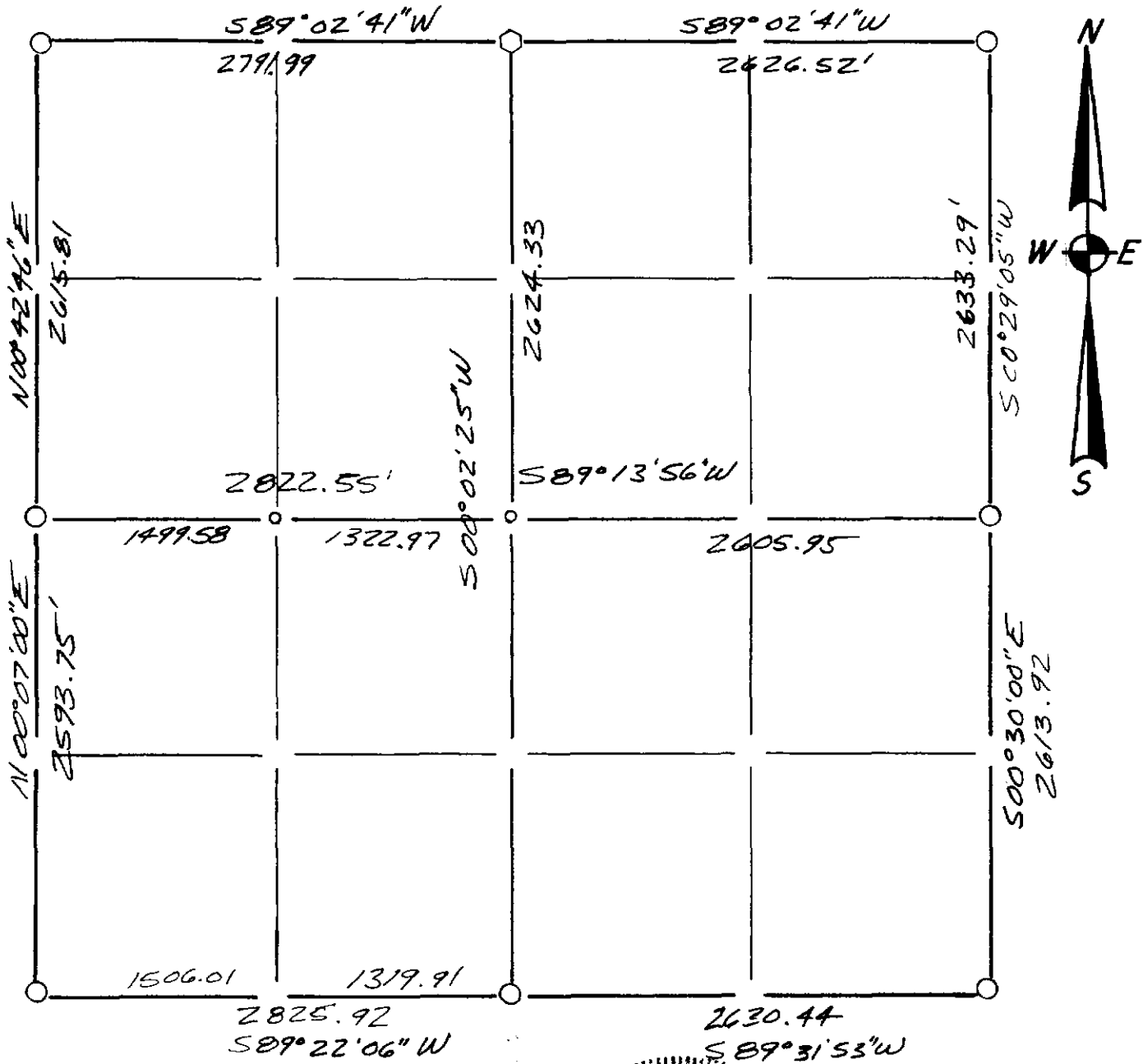
3

For Co. Surveyor Filing Use →

CORNER NO. \_\_\_\_\_

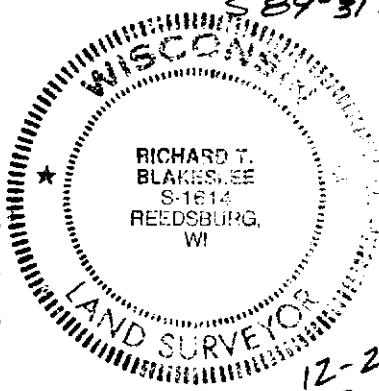
Section Summary and Index

Section 7 - 13N - 1W  
 Town Range



LEGEND

- ⊕ - Harrison cast iron monument.
- - Stone or concrete monument.
- - Other 2"x30" IRON Pipe Set
- ◊ = 1 1/2"x30" IRON Pipe Set
- - 3/4"x24" Re-BAR Set



12-2-86  
*Richard T. Blakeslee*

Note:

SURVEY SUMMARY ON BACK!  
 Summary for Pgs. 2-9



(E) DESCRIBE ANY MATERIAL DISCREPANCY BETWEEN THE LOCATION OF THE CORNER AS RESTORED OR REESTABLISHED AND THE LOCATION OF THAT CORNER AS PREVIOUSLY RESTORED OR REESTABLISHED BY DISTANCE AND DIRECTION. SHOW THE DISCREPANCY ON THE PLAN VIEW DRAWING UNDER (D), ABOVE. SHOW THE DISTANCES BETWEEN THE CORNER AS PREVIOUSLY RESTORED OR REESTABLISHED AND (1) THE CORNER AS RESTORED OR REESTABLISHED, AND (2) TO AT LEAST 2 OF THE WITNESS MONUMENTS AS SHOWN ON THE DRAWING IN (D), ABOVE.

(NA)

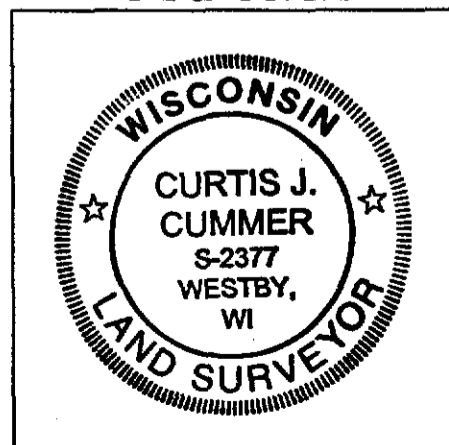
(F) WAS THE CORNER RESTORED THROUGH ACCEPTANCE OF (1) AN OBLITERATED EVIDENCE LOCATION, OR (2) A FOUND PERPETUATED LOCATION?

(2)


(G & H) WAS THE CORNER REESTABLISHED THROUGH LOST CORNER PROPORTIONATE METHODS? IF SO SHOW THE METHOD, INCLUDING THE DIRECTION AND DISTANCES TO THE OTHER PUBLIC LAND SURVEY CORNERS USED AS EVIDENCE OR USED FOR PROPORTIONING IN DETERMINING THE CORNER LOCATION.

(NA)

LAND SURVEYOR SEAL



(I) I, Curtis J. Cummer, CERTIFY THAT THE LOCATION SHOWN ON THIS RECORD WAS DETERMINED BY ME OR UNDER MY DIRECTION AND CONTROL AND THAT THIS U.S. PUBLIC LAND SURVEY MONUMENT RECORD IS CORRECT AND COMPLETE TO THE BEST OF MY KNOWLEDGE AND BELIEF.

 2/11/04  
SIGNATURE DATE