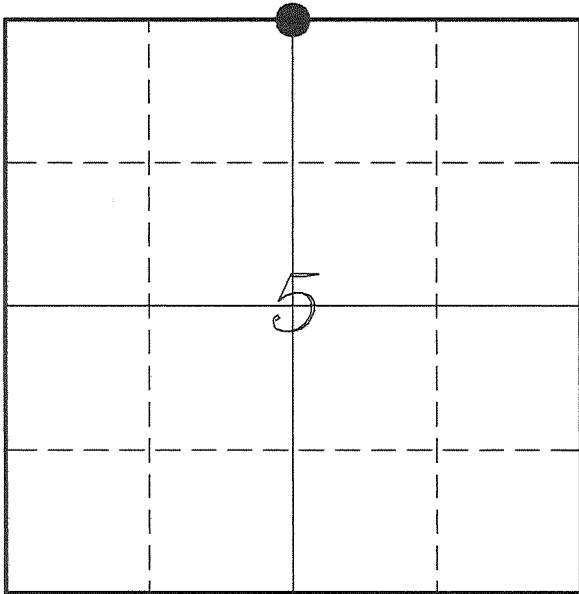


**U. S. PUBLIC LAND SURVEY MONUMENT RECORD**

**SECTION 5, T13N, R1W, TOWN OF UNION  
VERNON COUNTY, WISCONSIN**



*LOCATION OF LANDMARK*

|   |                        |
|---|------------------------|
| <i>VERNON COUNTY COORDINATE SYSTEM</i>                      |                        |
| <i>Northing</i>   | <i>179375.724</i>      |
| <i>Easting</i>  | <i>799147.991</i>      |
| <i>Datum</i>  | <i>NAD 1983 (2011)</i> |
| <i>Elevation</i>  |                        |
| <i>Datum</i>  |                        |
| <i>TYPE OF LANDMARK:</i>                                    |                        |
| <i>Set Lunde Monument<br/>4" Brass Capped<br/>Iron Pipe</i> |                        |
| <i>BEARINGS ARE REFERENCED TO:</i>                          |                        |
| <i>Vernon County Coordinates</i>                            |                        |

*Witnesses:* Laurence E Johns III  
Larry Handschy

*Eagle Ridge Surveying*  
PO Box 213  
Wilton, Wisconsin

*Date:* 21 April 2016

*Describe any record evidence, monument evidence, testimonial evidence or any other material evidence you considered and whether the monument was found or restored through acceptance of an obliterated evidence location.*

No bearing trees of record were located.

No monument was found for this corner or any recent survey to show an established corner.

I re-established this corner by using the distance shown on Knower's map and on the line between the S 1/4 Corner and the SW Corner of Section 32.

I set a Lunde Monument at this location.

*Describe or show any material discrepancy between the location of the restored corner and that of the corner previously restored or re-established.*

This corner was not established during the original government survey.

Wm Knower was at this corner, in May 1888, during a survey in Section 5. He established this corner at the mid-point between the NE Corner and the NW Corner. He also shows this corner being offset from the S 1/4 Corner of Section 32.

James Carroll conducted a survey in Section 6, in December 1987. He shows that he found a 2" iron pipe and accepted it as the N 1/4 Corner.

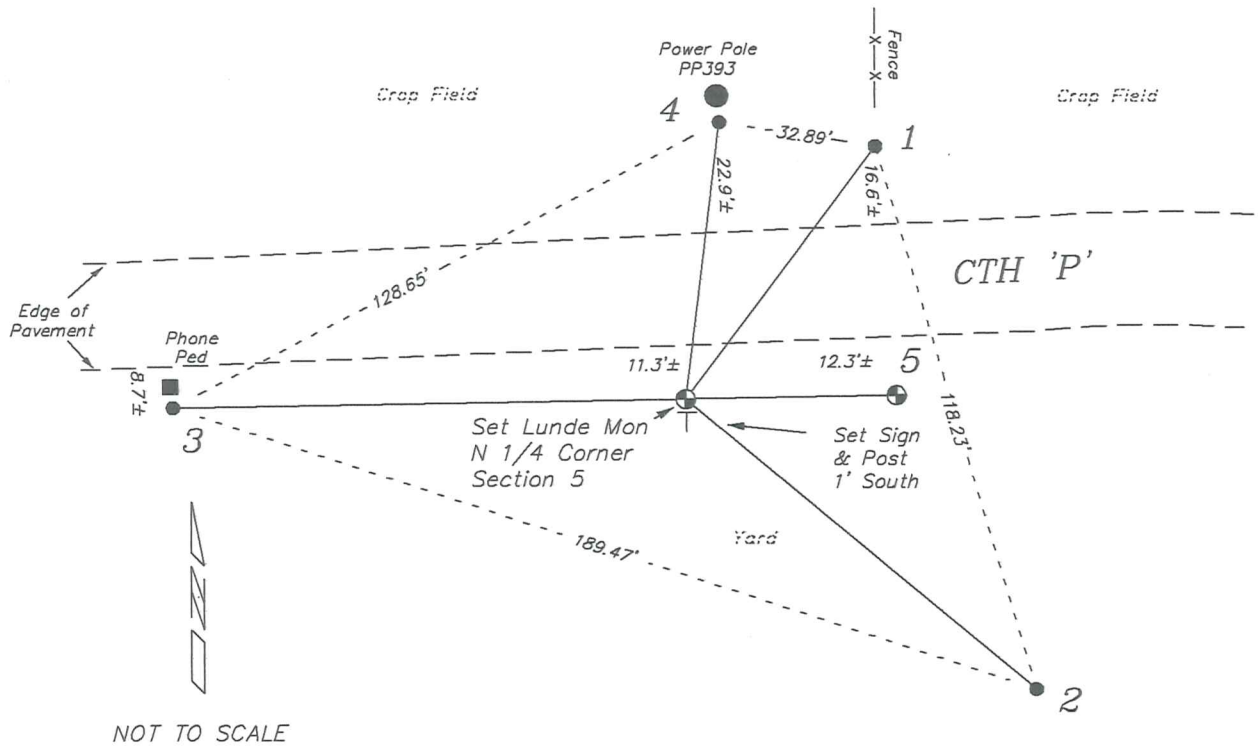
Jessica Zamor conducted a survey in Section 32, in July 1998. She shows she found a 2" iron pipe used by Carroll and accepted it at the S 1/4 Corner of Section 32 after extensive measurements in Section 32.

Ronald Jasperson created a tie sheet for the N 1/4 Corner of Section 5, in June 2002. He shows that he used Jessica's Zamor tie sheet to re-establish that corner. He used the same corner as Zamor.

Patrick Carroll was at this corner, in February 2010 and March 2011, during surveys in Section 32 and Section 5. He used the same corner for both sections.

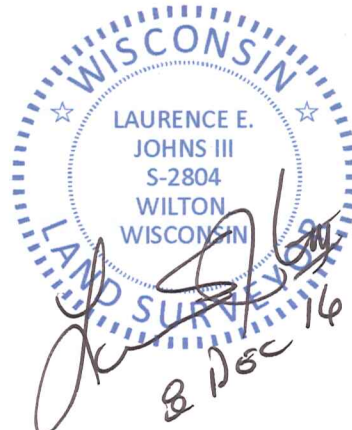
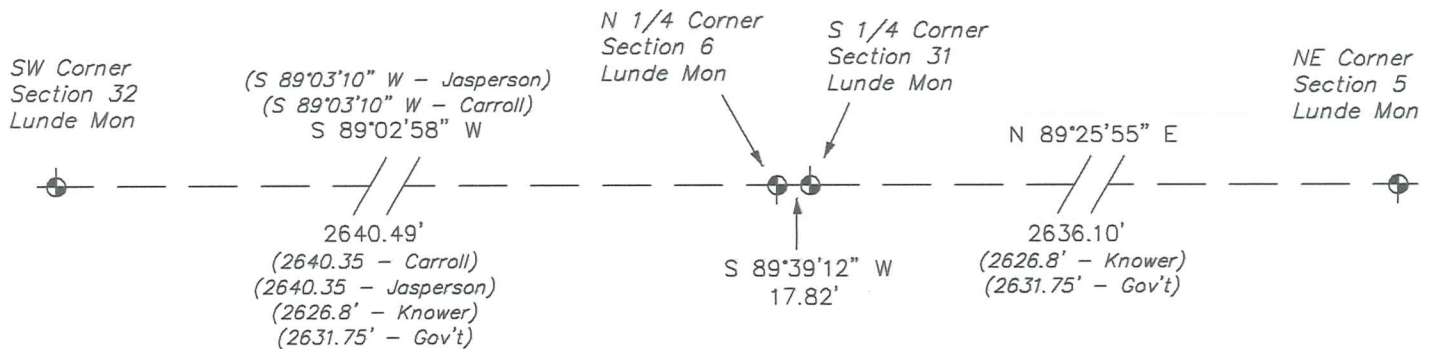
## RECORD OF DURABLE WITNESS MONUMENTS

| NO | DESCRIPTION  | BEARING       | DISTANCE |
|----|--|---------------|----------|
| 1  | Existing 3/4" x 18" Iron Rod<br>From Jasperson Tie Sheet | N 36°51'30" E | 65.96'   |
| 2  | Existing 3/4" x 18" Iron Rod<br>From Jasperson Tie Sheet | S 50°17'09" E | 94.89'   |
| 3  | Set 3/4" x 18" Iron Rod<br>1' South of a Phone Pedestal  | S 89°07'42" W | 107.07'  |
| 4  | Set 3/4" x 18" Iron Rod<br>1' South of Power Pole PP393  | N 06°57'58" E | 58.20'   |
| 5  | Lunde Monument<br>S 1/4 Corner Section 32                | N 89°02'58" E | 43.89'   |



## PLAN VIEW DRAWING OF REFERENCE TIES

Map Showing Distance And Direction To Other Public Land Survey Corners Used For Re-Establishing The Corner



I, Laurence E Johns III PLS 2804, Professional Land Surveyor, hereby certify that the corner location shown on this record was determined by me or under my direction and control, and that this U.S. Public Land Survey Monument Record is correct and complete to the best of my knowledge and belief.